

Stanley Park Water Supply Tunnel



Building new earthquake-resilient infrastructure to ensure the continued delivery of high-quality drinking water for the region's growing population

Project Overview

To meet the growing demand for drinking water in the region, Metro Vancouver is planning to construct a new water supply tunnel deep under Stanley Park. The new tunnel will replace an existing water main that was built in the 1930s and is at the end of its service life.

The project is in the detailed design stage and construction is expected to begin in late 2024 through 2029. When complete, the new tunnel will meet current seismic standards, help ensure the continued reliable delivery of high-quality drinking water to the cities of Vancouver and Richmond, and increase the capacity of the existing system for the region's growing population.

Major Milestone Achieved: Project Approval

Metro Vancouver has received approval from the Vancouver Park Board for the Stanley Park Water Supply Tunnel project to proceed to construction, and has now started the process to hire a construction contractor.

The project team expects the contractor will start working on the project in late 2024, however some early work, such as site preparations, may be done in advance of this date.

Join us!

Stanley Park Water Supply Tunnel Community open house

Meet the project team, receive updated information on our plans, and ask questions about the project.

Wednesday November 1, 2023

4:30 pm – 6:30 pm

Location: Vancouver Rowing Club
450 Stanley Park Dr, Vancouver (see map)

We look forward to meeting you there!



Community open house
Vancouver Rowing Club
450 Stanley Park Drive

To build an underground tunnel, install a water main and build two valve chambers, three shafts will be constructed in Stanley Park. The shaft site locations, along with the tunnel alignment and construction process, were carefully selected based on rigorous geotechnical, environmental, archaeological, technological and traffic studies. At all three shaft sites, the construction areas will be restored to equal or better condition.

Burrard Inlet Shaft Site

At the Burrard Inlet shaft site, the new main will connect to existing infrastructure that brings treated drinking water from the North Shore mountains under Burrard Inlet to a connection in Stanley Park.

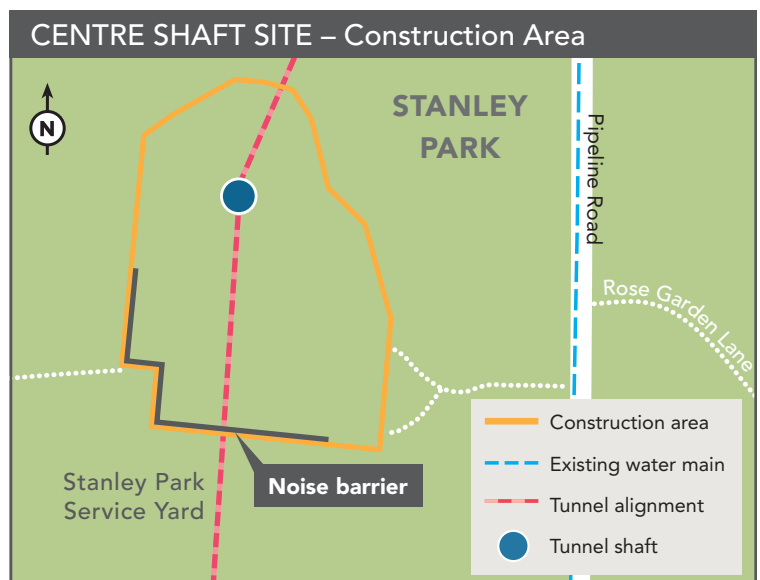
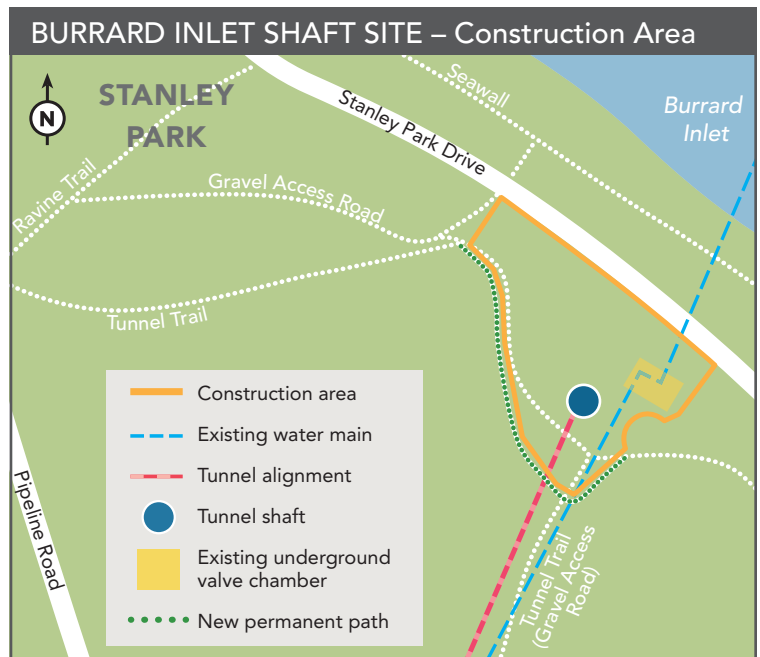
Work will include replacing the existing connection and constructing a new shaft and valve chamber. To reduce the construction footprint, the new shaft and valve chamber will be built to overlap a portion of the original 1930s excavation.

Centre Shaft Site

The centre shaft site will be the main construction area for the project and will include the construction of a shaft that will be used to excavate the tunnel and remove excavated material. No permanent infrastructure will be installed at this site. Tunnelling will start at the centre shaft and work its way outwards towards the other two shaft sites. All the bedrock will be removed through the centre shaft, reducing impacts at the other two shaft sites.

Chilco Street Shaft Site

The Chilco Street shaft site will include the construction of a shaft, as well as chambers that will house underground pipes and valves to control the flow of the water supply, along with a backup power building. To reduce the construction footprint, the old valve chambers that are currently situated on the site will be removed and a new shaft and valve chamber will be constructed in the same area. The site will not be used to excavate the tunnel, which will help reduce construction impacts on the neighbourhood and keep the construction area relatively small.



STANLEY PARK WATER SUPPLY TUNNEL – Shaft Site Locations and Designated Truck Routes



STANLEY PARK

Traffic will be reduced to one lane for the duration of the project

Burrard Inlet shaft site

- Trucks will access the site via designated routes and gates
- Tunnel Trail will be permanently relocated slightly south of the site
- Signage will be provided about trail closures and traffic changes

Burrard Inlet

Beaver Lake

New water supply tunnel deep under Stanley Park

Centre shaft site

- Trucks will access the site via designated routes and gates
- Traffic control signage will be provided to improve traffic flow and reduce congestion
- Any impacted pathways will be re-routed

Stanley Park Causeway
North Lagoon Drive

Pipeline Road

Stanley Park Drive

Avison Way

Lost Lagoon

Coal Harbour

Chilco Street shaft site

- Trucks will access the site via designated routes and gates
- Bike and pedestrian paths will be relocated in both directions around the construction area
- Temporary bollards will be installed on Chilco Street to prevent through traffic between Robson and Alberni Streets
- Traffic control signage will be provided to improve traffic flow and reduce congestion

Lagoon Drive
Chilco Street

Gilford Street

Alberni Street

Trucks will travel along specific truck routes that have been developed with input from the City of Vancouver

Denman Street

Haro Street

Robson Street

West Georgia Street

West Hastings Street

VANCOUVER

English Bay

Comox Street

Nelson Street

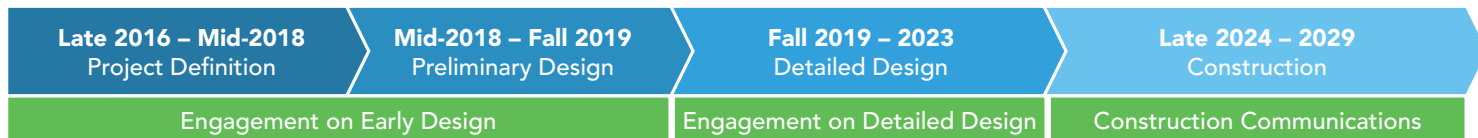
Cardero Street

Davie Street

Pendrell Street

- Stanley Park Water Supply Tunnel
- Burrard Inlet shaft site truck route
- Centre shaft site truck route
- Chilco Street shaft site truck route

Project Timeline



Typical Hours of Work

Hours of work may change depending on construction needs. If work outside of the typical construction hours is required, Metro Vancouver will apply for a bylaw variance with the City of Vancouver. Typical hours of work are:

- **Monday to Friday:** 7:30 am – 8:00 pm
- **Saturdays:** 10:00 am – 8:00 pm
- **Sundays and holidays:** No work planned

Traffic, Noise, and Dust Mitigation

Metro Vancouver understands that noise, dust, and traffic are concerns for residents and will ensure mitigation measures will be in place during construction, including:

- Conducting noise monitoring to ensure that all work complies with City of Vancouver bylaws and granted bylaw variances
- Implementing dust mitigation measures, including wheel washing stations and street watering
- Providing traffic control personnel and signage to reduce congestion associated with construction

Community Liaisons

In order to provide continuous communication throughout the lifecycle of the project, Metro Vancouver has assigned two dedicated community liaisons to the project. Our community liaisons are available Monday to Friday from 8:00 am to 4:30 pm to answer your questions and hear community concerns about the Stanley Park Water Supply Tunnel.

Community Engagement

Metro Vancouver will maintain open and ongoing communication about the project and will provide advance notice about upcoming work and changes that could impact neighbours and park users.

Project information will also be distributed via the project website, electronic newsletters, on-site signage, and through social media.

Stay Updated

The latest project news and updates will be regularly posted on our website. Scan the QR code to visit the dedicated project web page or go to metrovancover.org and search for “Stanley Park Water Supply Tunnel”.



Restoration

The Vancouver Park Board will initiate a restoration design for the construction sites in Stanley Park. All restoration planning and implementation will be governed by the Park Board’s commitment to reconciliation and decolonization, and in alignment with approved policies and strategies, including but not limited to the Urban Forest Strategy, Biodiversity Strategy, and VanPlay. It will also include public engagement throughout the process.

Contact Us

Community Liaisons: 604-432-6200
(Monday to Friday from 8:00 am to 4:30 pm)

After Hours Emergency: 604-451-6610

Email: icentre@metrovancover.org (Include “Stanley Park Water Supply Tunnel” in the subject line)

Website: metrovancover.org (Search for “Stanley Park Water Supply Tunnel”)

metrovancover
Together we make our region strong