

Annacis Water Main North – New Westminster Section



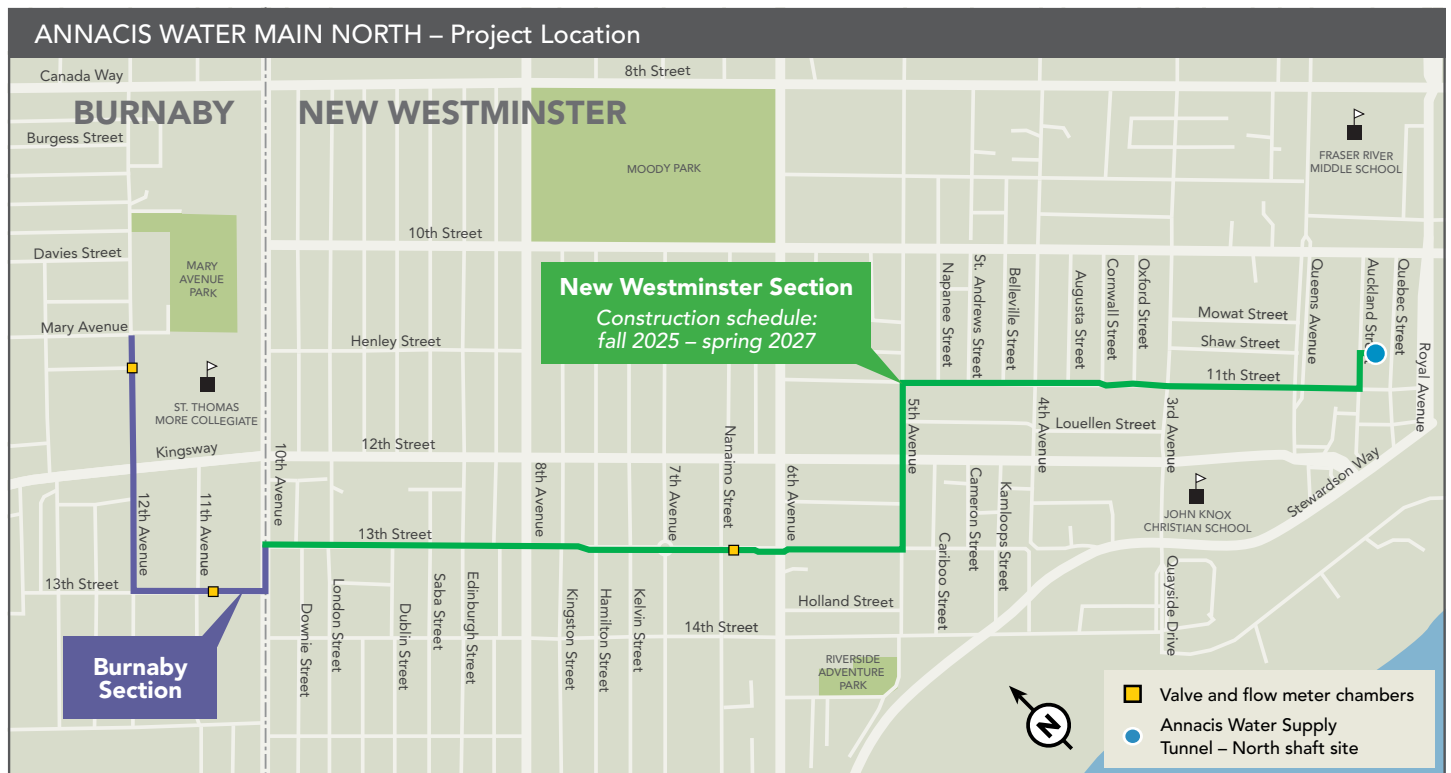
Building new infrastructure to ensure the continued delivery of high-quality drinking water for the region's growing population

About the Annacis Water Main North Project

Metro Vancouver is planning to construct the Annacis Water Main North in Burnaby and New Westminster to increase the delivery of high-quality drinking water to growing communities south of the Fraser River. The new water main is approximately three kilometers long and 1.8 metres in diameter. It will run between 12th Avenue in Burnaby, and Auckland Street in New Westminster.

The project is currently in the detailed design phase. Construction is expected to take approximately three years and will be undertaken in two sections. We will start with the New Westminster Section, which extends from 10th Avenue to Auckland Street, followed by the Burnaby Section, which will run from 12th Avenue to 10th Avenue.

Metro Vancouver may also make road upgrades and install new water, storm and sanitary sewer pipes on behalf of the City of Burnaby along 12th Avenue. Once complete, Metro Vancouver will return to connect the newly constructed water main to the regional water system at a later date.



The New Westminster Section

This section of the Annacis Water Main North is two kilometres long and will take approximately two years to complete. Construction of the New Westminster section will take place mainly along 11th Street and 13th Street, between Auckland Street and 10th Avenue.

Project Timeline



This timeline is subject to change.

Site Preparation

Ahead of major construction activities, we will:

- **Prepare the Site:** Our contractor will install temporary fencing and signage, set up site trailers and facilities, deliver equipment to the site, and identify utilities within the project area.
- **Relocate Existing Utilities:** Construction crews may relocate underground utilities to accommodate the new infrastructure.

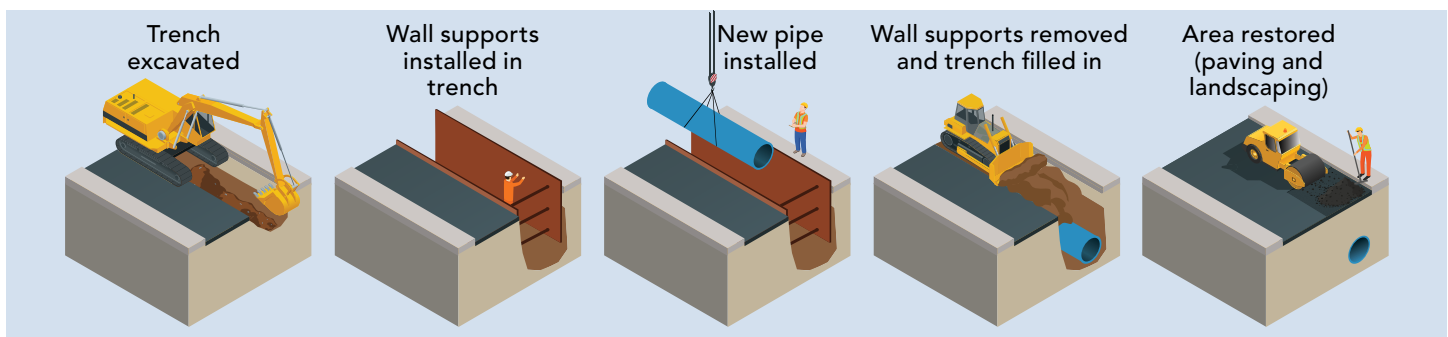
Construction

When the site is ready for construction, crews will:

- **Install the Water Main:** The new water main will be installed in segments. This work will involve excavating a large trench, placing wall supports to secure the excavated area, installing a steel pipe, and restoring the impacted roadway with temporary asphalt before moving to the next segment.
- **Construct an Underground Valve Chamber:** Our contractor will construct one underground valve chamber near the intersection of 13th Street and Nanaimo Street. This work will include excavating a large trench, installing wall supports, building a concrete structure, installing pipes and other equipment within the chamber, and temporarily restoring the area.
- **Test the Water Main:** Construction crews will excavate a small area at each end of the water main, conduct pressure testing, and temporarily restore the impacted areas.

Restoration

During this phase, our contractor will restore the impacted areas to previous or better condition. The City of New Westminster will undertake a tree replanting program once the project is complete.



The trench construction progress, from start to finish.

Reducing Construction Impacts

The community can expect impacts such as traffic, noise, and dust during this project. We have been working closely with the City of New Westminster to minimize impacts. Some measures we have planned to prevent or reduce project impacts include:

Traffic and Safety

- Develop a Traffic Management Strategy to minimize and reduce traffic impacts
- Place fencing, traffic control personnel, and signage around the construction areas to ensure people can safely travel in the area
- Avoid blocking residential and commercial driveways or coordinate access in advance to reduce impacts
- Ensure large construction vehicles will only travel on designated truck routes

Noise and Vibration

- Develop and implement a project-specific Noise and Vibration Management Plan
- Monitor noise and vibration to ensure the work is compliant with municipal bylaws and granted bylaw variances

Dust and Air Quality

- Reduce idling time of construction vehicles
- Use newer vehicles and equipment to minimize greenhouse emissions
- Covering construction vehicle loads travelling to and from the site

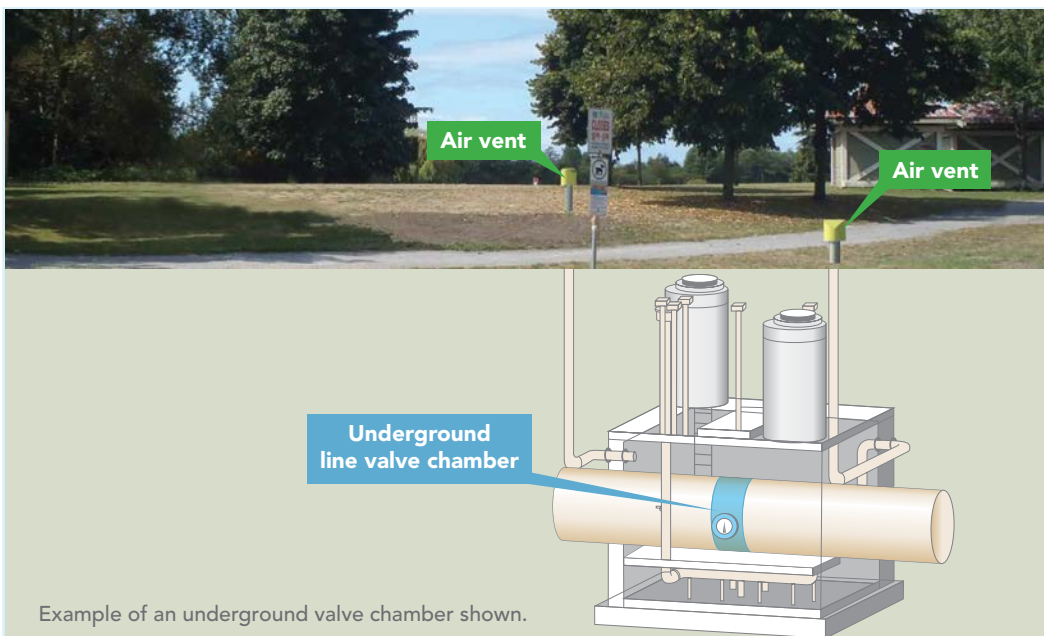
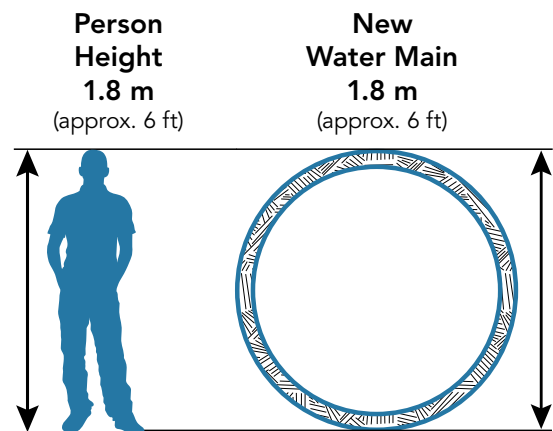
Garbage Collection

- Provide temporary access to solid waste and recycling collection vehicles. If not possible, assist residents by moving waste bins to a designated collection area and return them once the waste has been collected

We will continue planning for mitigation measures as the project progresses.

How Big Is the New Water Main?

There are different sizes of water mains in our regional distribution system. The water main for this project will be approximately 1.8 metres in diameter.



Example of an underground valve chamber shown.

What Are Valve Chambers?

Valve chambers play an important role in how Metro Vancouver delivers drinking water to your municipal system.

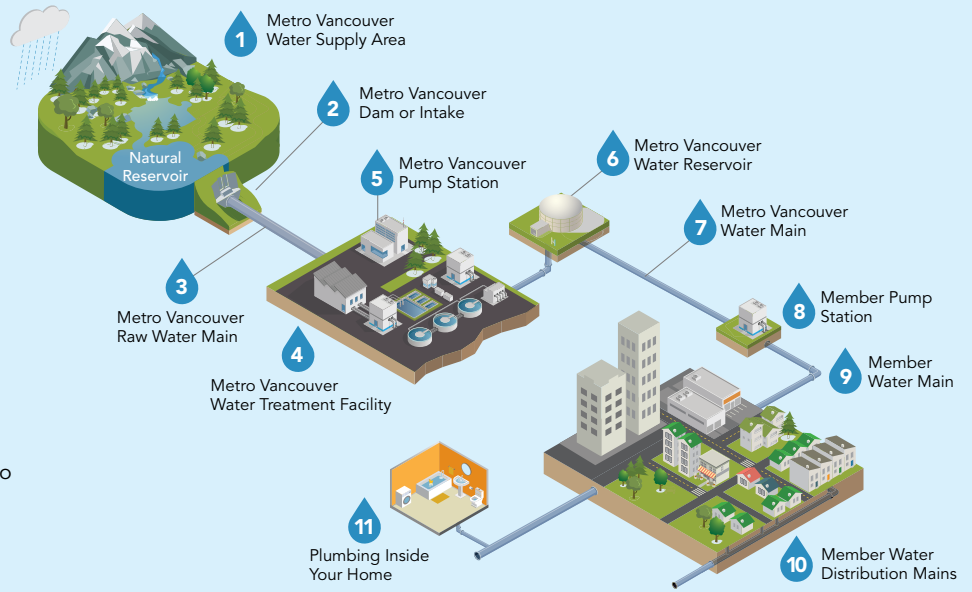
Typically constructed underground, these chambers house pipe connections, valves, and other electrical equipment used to regulate the flow of water through area mains. They also allow maintenance crews to isolate certain sections of the distribution system to conduct maintenance and repair work.

How does water get to your home?

Metro Vancouver and its members work together to supply high-quality drinking water to the region.

Metro Vancouver is responsible for protecting and providing the region's water supply, including: protecting our water supply areas, storing, treating and ensuring the quality of our water, supplying water directly to our members, and planning for future supply and demand.

Our members are responsible for providing water to residents and businesses, enforcing regulations, utility billing, and where used, water metering.



Typical Hours of Work

- **Monday to Friday:** 7:00 am – 5:00 pm
- **Saturday:** 9:00 am – 6:00 pm
- **Sundays and holidays:** No work planned

This schedule may change if crews need more time to complete critical activities. Metro Vancouver will notify the community about these activities ahead of time. All activities will comply with the City of New Westminster bylaws and granted bylaw variances.

Working With the Community

Metro Vancouver is committed to working closely with the community to incorporate feedback into our plans wherever possible. We are planning to hold engagement in 2025, to share more about the Annacis Water Main North project and to gather your feedback.

We will keep the community informed as the project progresses by sending updates through print notifications, emails, the project webpage, and on-site signage. You can subscribe to our mailing list to receive regular updates via email by clicking on the sign-up button on the project webpage.

Our community liaison is also available to address questions and comments throughout the project.

If anyone in your home has mobility restrictions or other concerns, please contact our community liaison to discuss alternate options to reduce impacts.



Contact Us

Community Liaison: 604-432-6200
(Monday to Friday from 8:00 am to 4:30 pm)

After Hours Emergency: 604-451-6610

Email: icentre@metrovancouver.org (Include "Annacis Water Main North – New Westminster Section" in the subject line)

Website: metrovancouver.org (Search for "Annacis Water Main North – New Westminster Section" for more information or to sign up for project updates)

metrovancouver
Together we make our region strong

Metro Vancouver is a diverse organization that plans for and delivers regional utility services, including water, sewers, and wastewater treatment, and solid waste management. It also regulates air quality, plans for urban growth, manages a regional parks system, provides affordable housing, and serves as a regional federation. The organization is a federation of 21 municipalities, one electoral area, and one treaty First Nation located in the region of the same name. The organization is governed by a Board of Directors of elected officials from each member jurisdiction.