

Solid Waste Management Plan Engagement

Sandy Young, MEB

Senior Engagement Specialist, Strategy and Stakeholder Relations

IAC June 7, 2022

Orbit Link:

metrovancouver



TOGETHER
WE MAKE OUR REGION
STRONG

metrovancouver

23 Member
Jurisdictions

2.7 Million
Residents

53% of the
population of BC

61% of BC GDP

1.29 million jobs

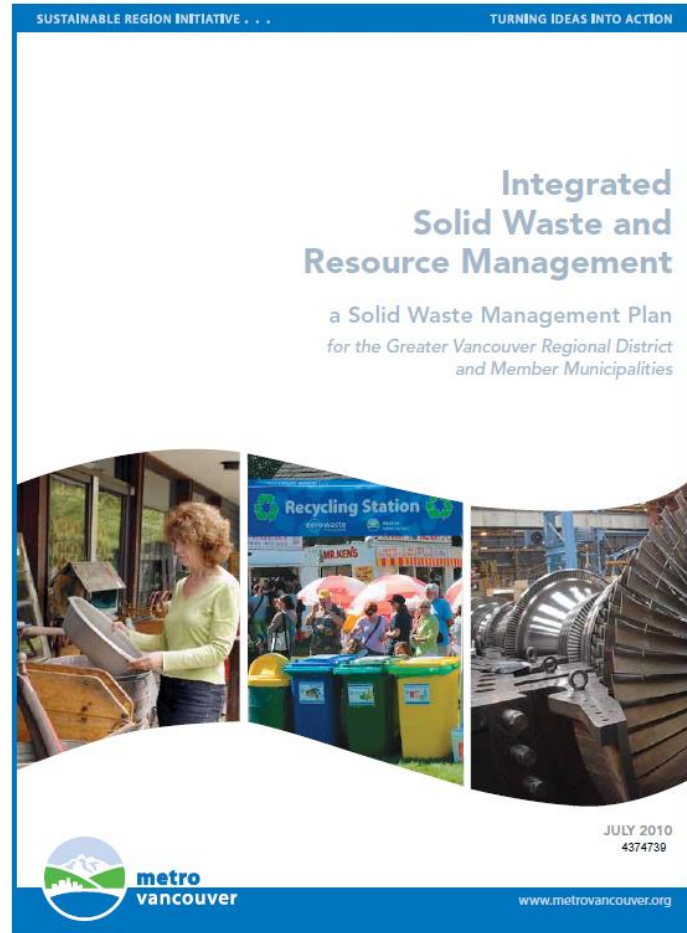


METRO VANCOUVER SERVICES



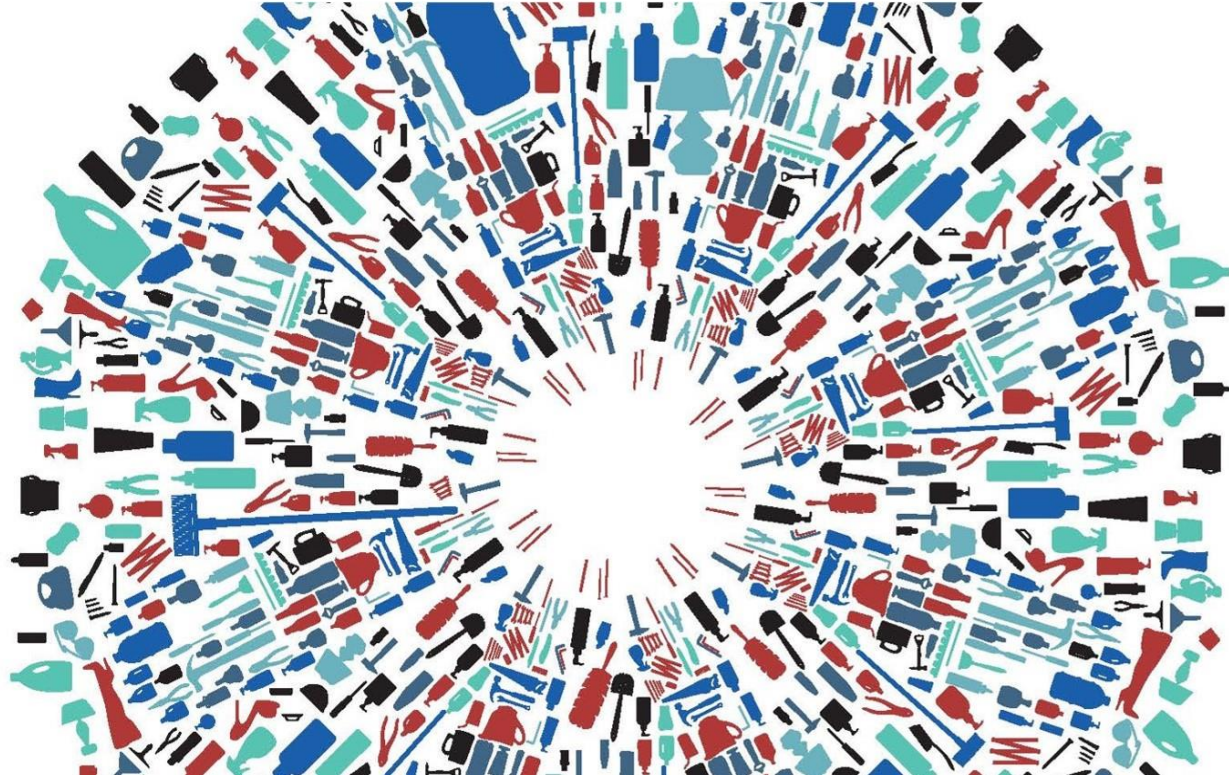
EXISTING PLAN

- Approved by Province in 2011
- Key goals:
 - Reduction
 - Reuse
 - Recycling
 - Material and energy recovery
 - Disposal



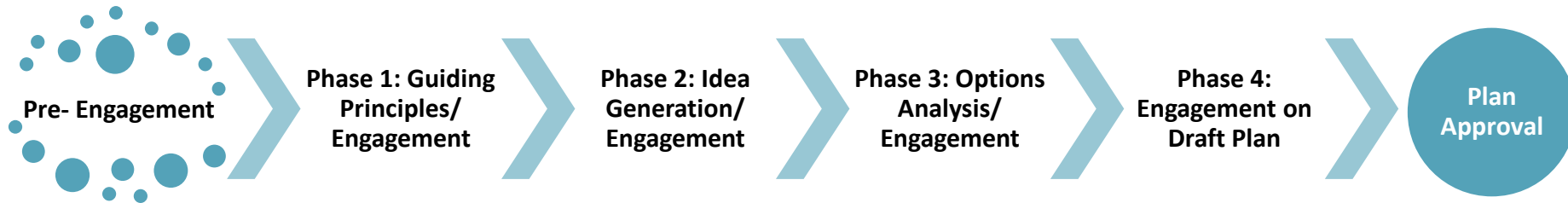
WHY UPDATE THE PLAN

- Accelerate waste reduction and diversion
- Promote circular economy
- Reduce GHGs



PUBLIC ENGAGEMENT PROGRAM

- Exceed regulatory requirements
- Transparent, inclusive & responsive
- Equity and accessibility
- No one left behind



PRE- ENGAGEMENT SUMMARY



3600+

email and letter invitations

8 groups
presented
to the
Consultation
and
Engagement
Panel



80

e-newsletter
sign-ups

335 online
questionnaire
submissions



13
meetings
with staff



6 written
submissions
from
organizations



900+

project webpage visits



4 workshops and
presentations

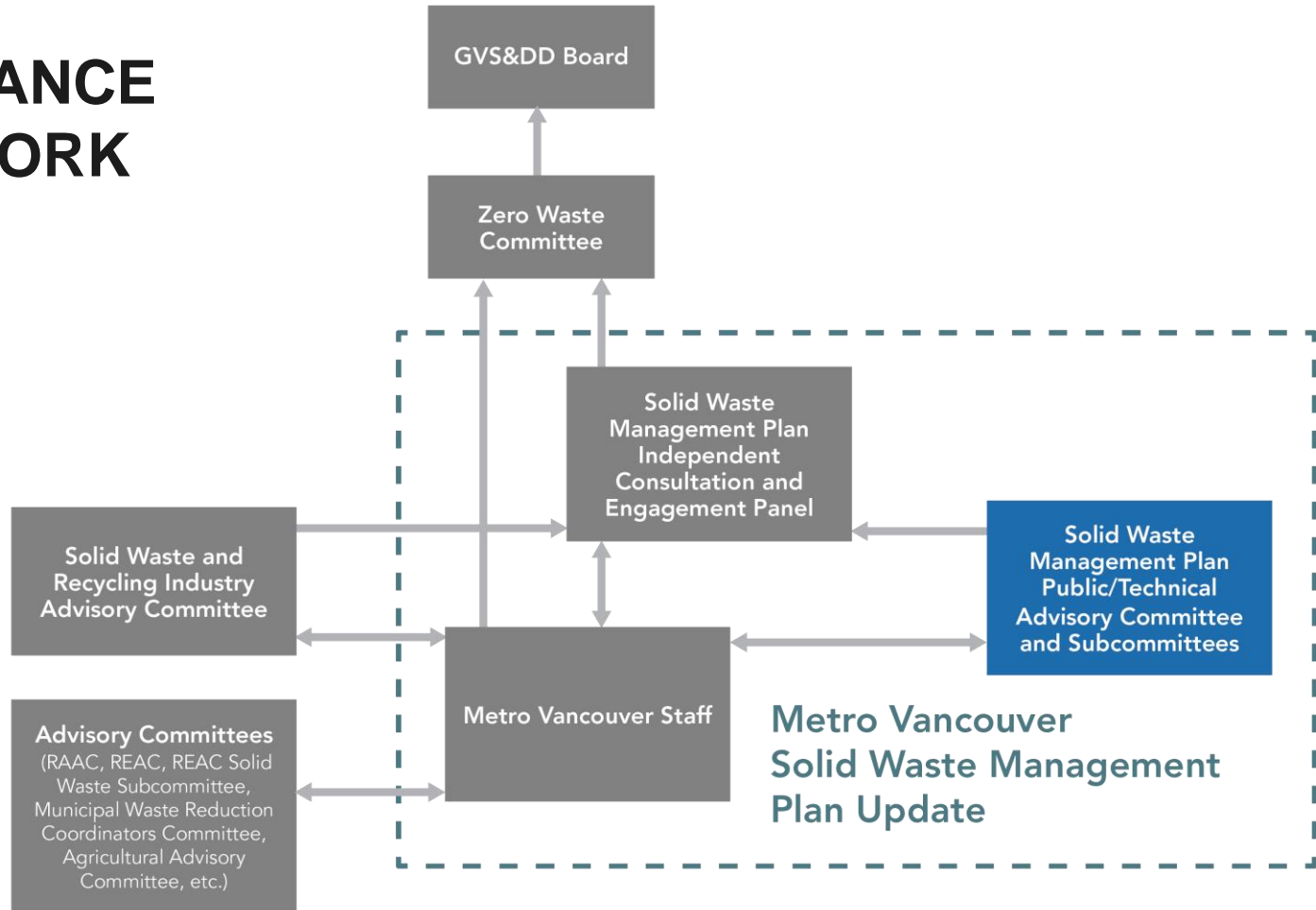


updates to **3** municipal
committees



shared on **4** social media
platforms

GOVERNANCE FRAMEWORK



PUBLIC/TECHNICAL ADVISORY COMMITTEE

- Forum for public and technical input, required by Province
- ~30 members with relevant personal qualities and experiences, from a range of background
- Membership selected by GVS&DD Board in closed meeting
- Meetings in June and September 2022



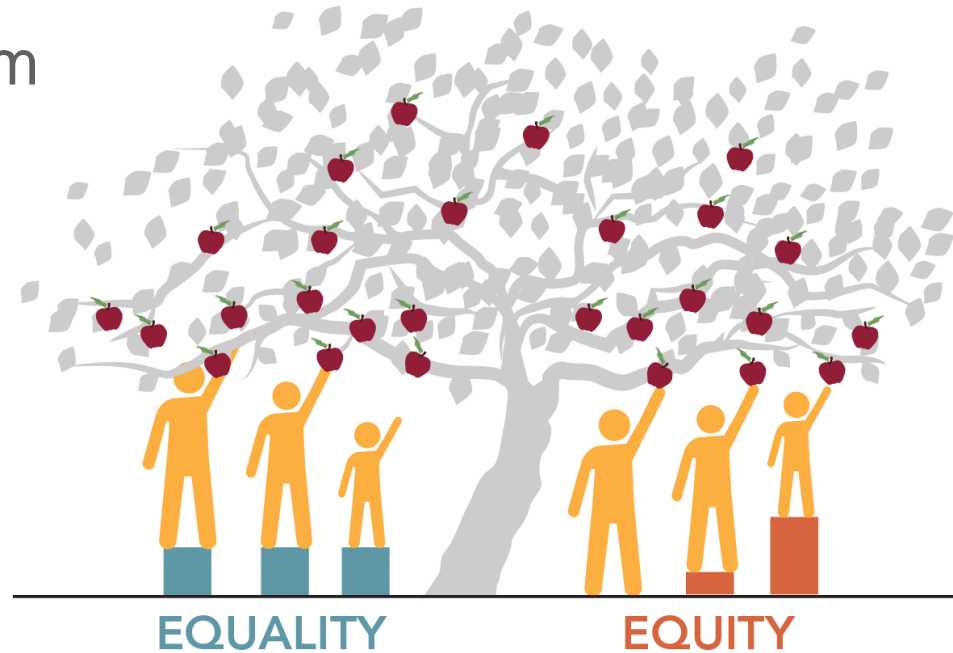
INDIGENOUS ENGAGEMENT

- Separate, iterative, collaborative process
- Includes Indigenous Nations and urban Indigenous peoples
- Guided by Declaration on the Rights of Indigenous Peoples and reconciliation



EQUITY LENS IN SOLID WASTE MANAGEMENT PLANNING

- Public engagement program design
- Public/Technical Advisory Committee selection
- Plan development





Thank you

metrovancouver



2021 Full-Scale Study Dillon Waste Composition Team

2021 Waste Composition Study Results

MULTI-FAMILY AND FULL-SCALE STUDIES

Terry Fulton, P.Eng.

Senior Project Engineer, Solid Waste Services

Solid Waste and Recycling Industry Advisory Committee Meeting, June 7th 2022

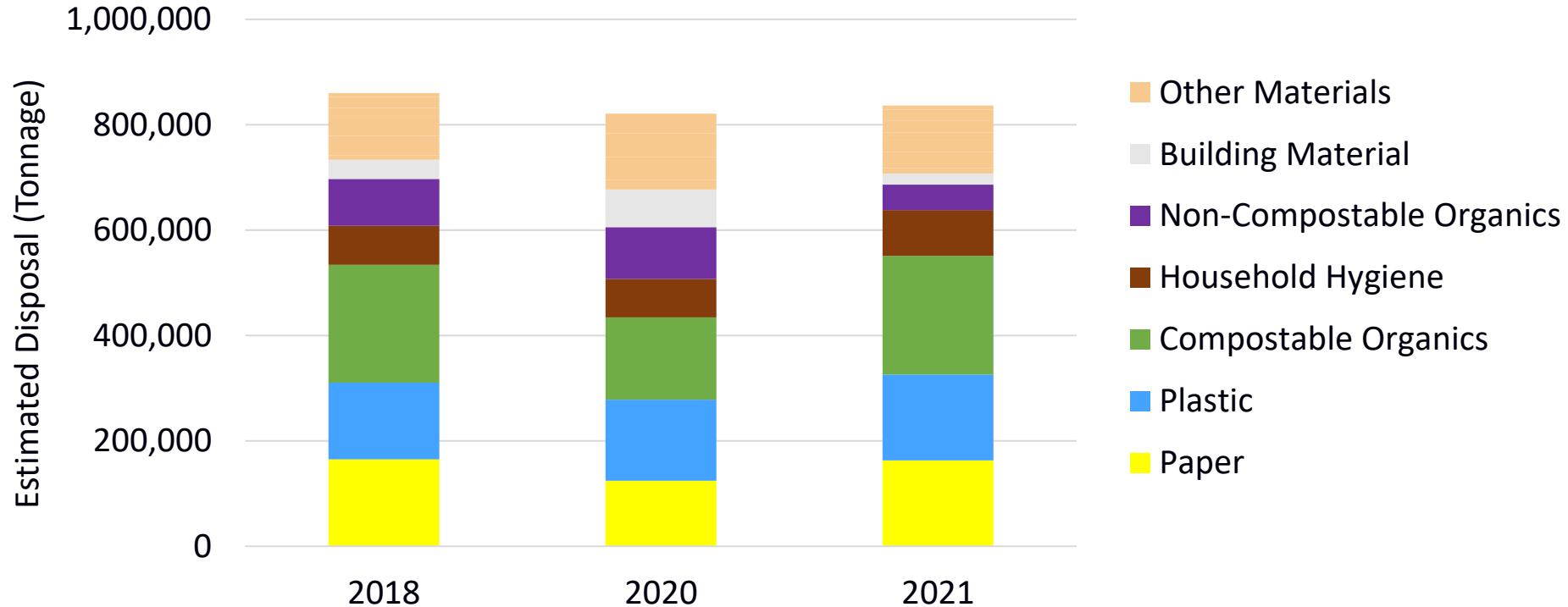
metrovancouver

WASTE COMPOSITION PROGRAM PLAN

Type of Study	Description	Frequency
Full-scale	Includes samples from all sectors received at Regional Facilities	Annually
Multi-family	Focuses on apartment and townhome waste sampled directly from participating buildings	Annually for three years, then every two years
Commercial/ Institutional	Focuses on business waste sampled directly from participating businesses	Annually for three years, then every two years
Construction & Demolition	Visually estimates composition of large construction and demolition loads received at regional landfills	Every three years

FULL-SCALE STUDY RESULTS

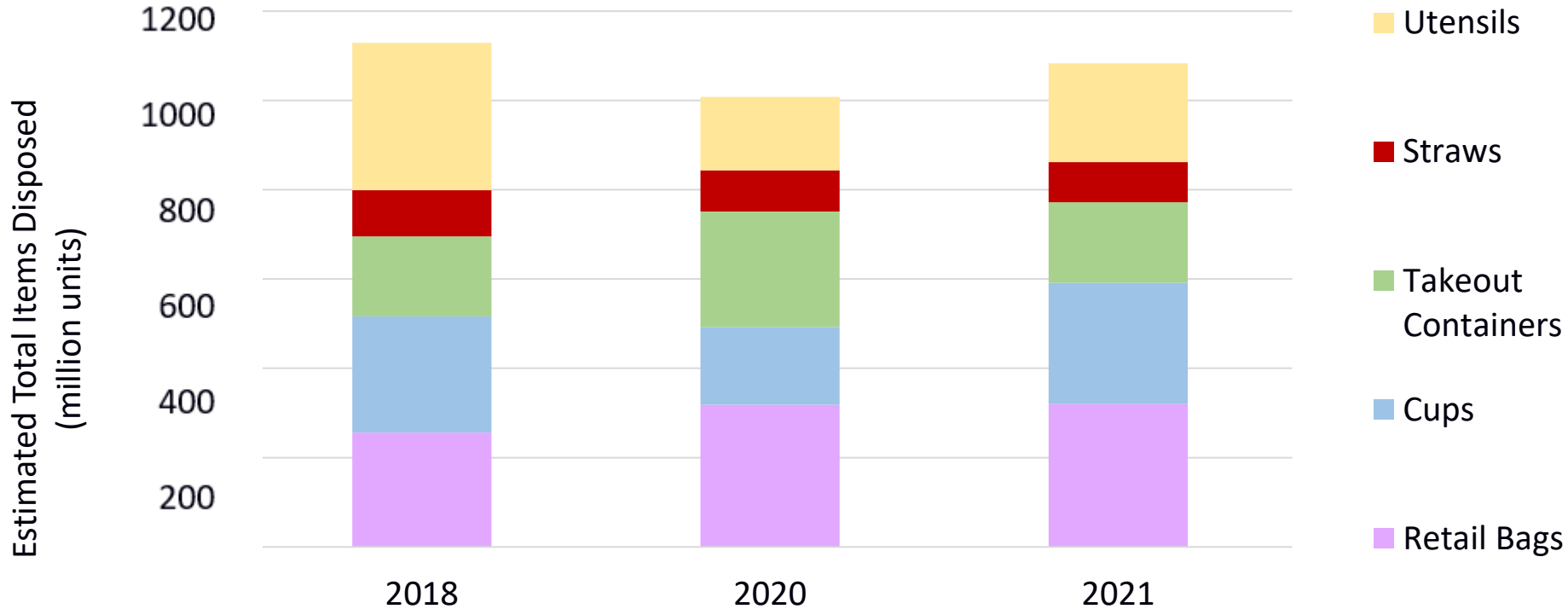
Total Tonnage Disposed



FULL-SCALE STUDY RESULTS

Single-Use Items Counts*

*3% of waste stream by weight



PERSONAL PROTECTIVE EQUIPMENT

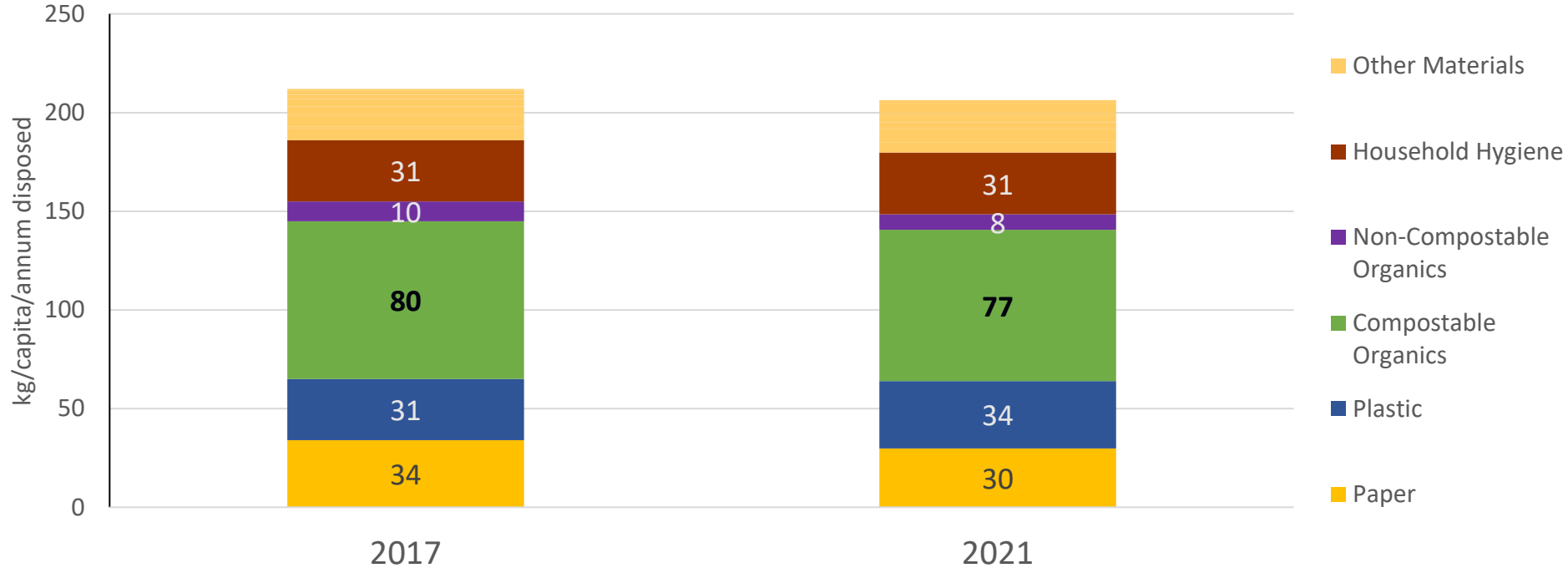
Number of items disposed

PPE Item	2020		2021	
	Items/capita	Total items (millions)	Items/capita	Total items (millions)
Masks	40	109	94	260
Gloves ¹	136	371	126	350
Wipes	18	48	36	100
Total	194	528	257	710

¹ Gloves are counted individually

MULTI-FAMILY WASTE COMPOSITION RESULTS

kg/capita disposed - 2017 vs. 2021



CONCLUSIONS

- 2021 composition is similar to pre-pandemic composition in 2018
- Single-use items are lower than in 2018
- Personal protective equipment disposal, particularly masks, has increased since 2020
- Compostable organics remain a key opportunity in the multi-family sector



Sorted PPE



Sorted waste



Thank you

metrovancouver