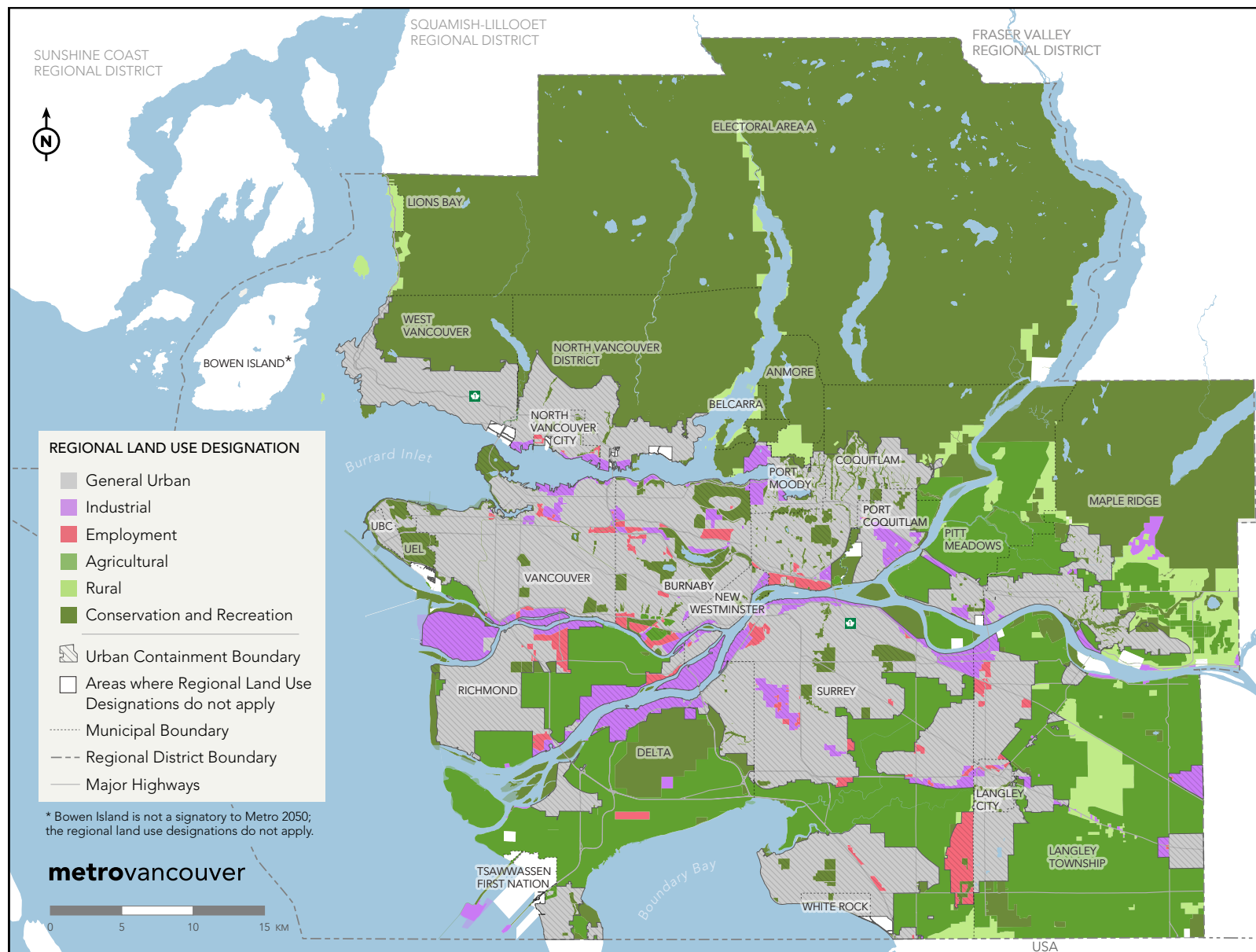


# MAP 1 Metro Vancouver Region



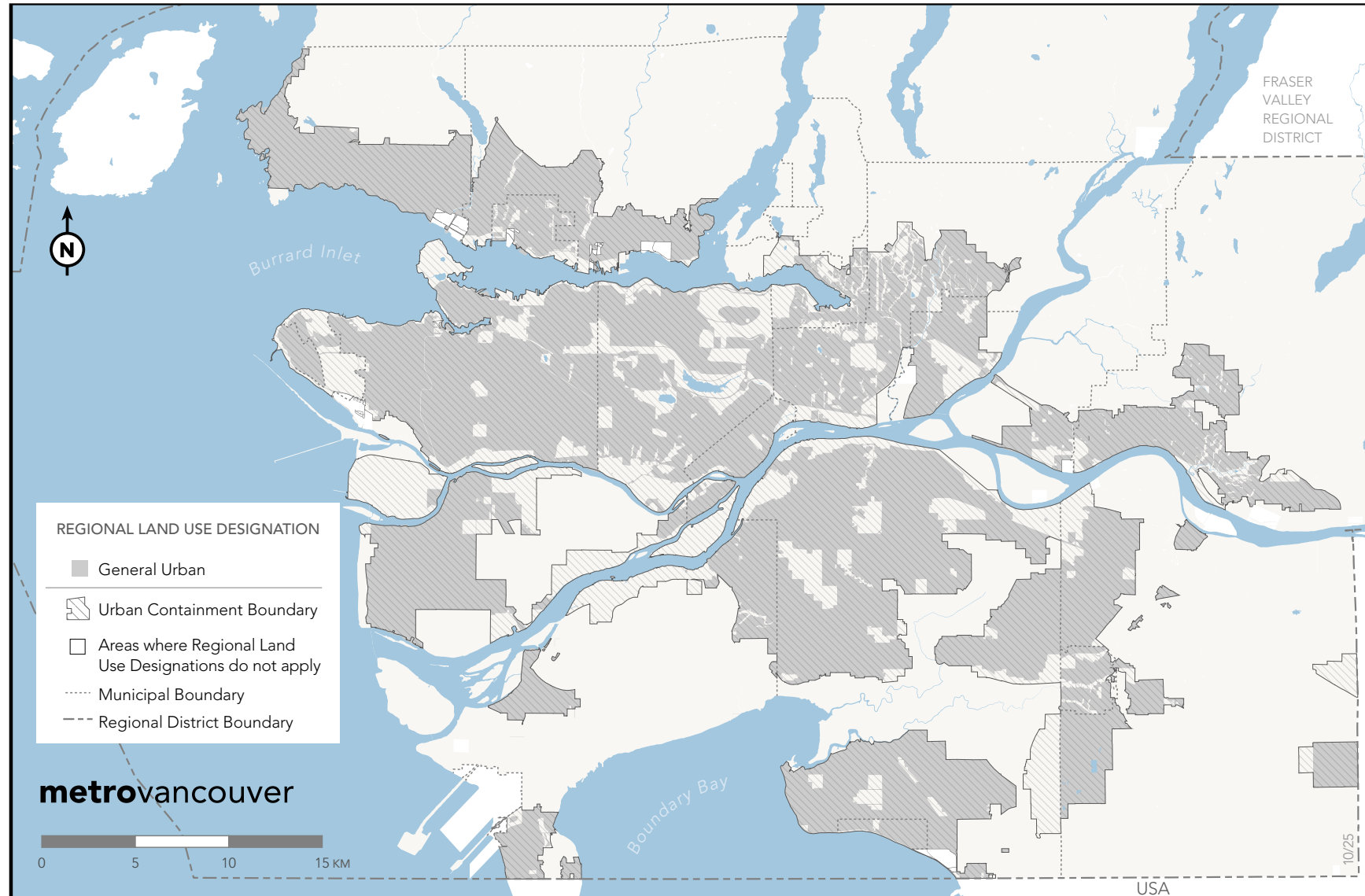
Map for reference only. Revised by Bylaw 1380, 2024.

## MAP 2 Regional Land Use Designations



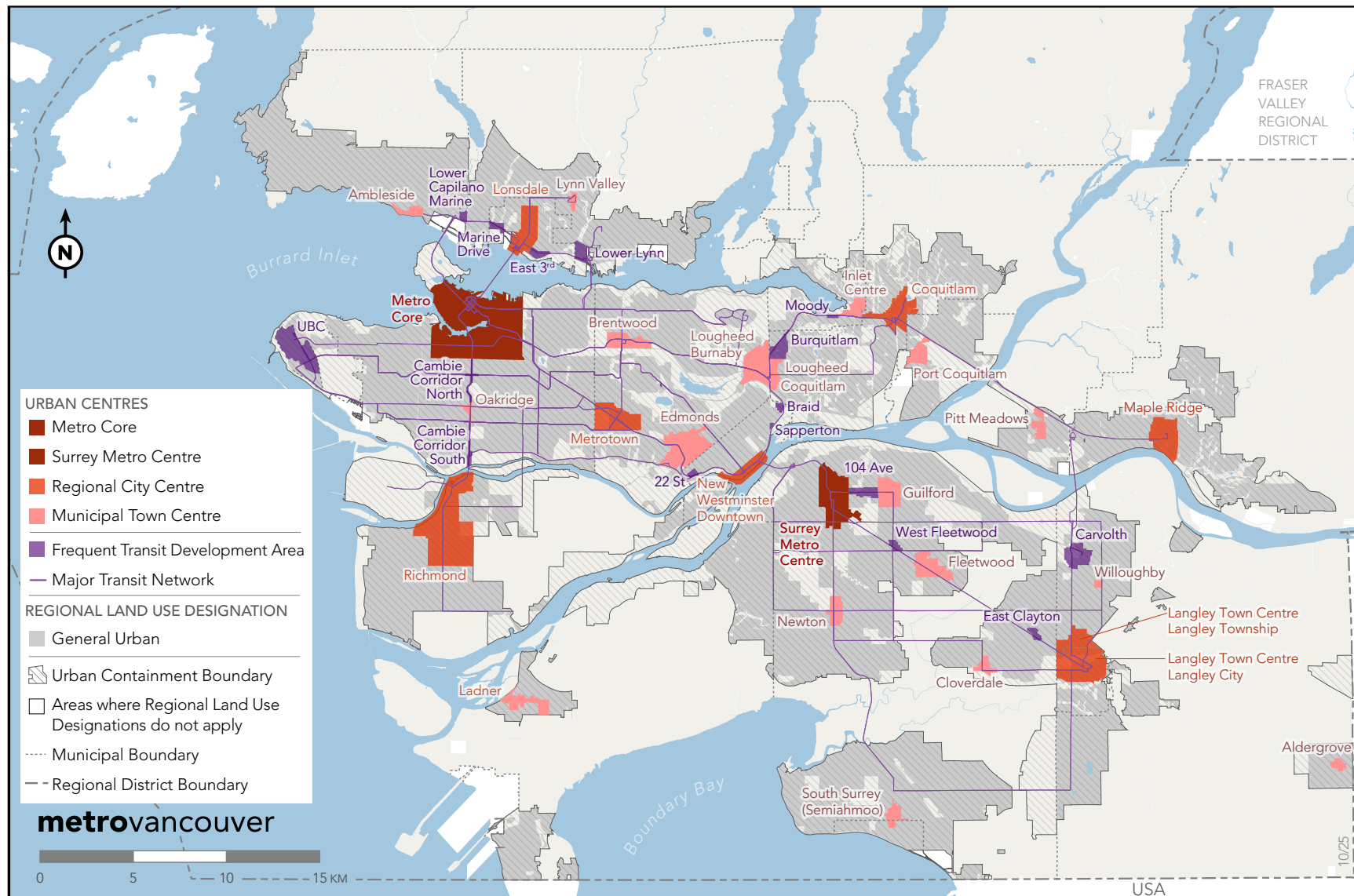
This map is a small scale representation of the parcel-based Regional Land Use Designation Map that Metro Vancouver maintains as the basis for defining land-use designation boundaries. The official Regional Land Use Designation Map can be found at [metrovanancouver.org](https://metrovanancouver.org) Revised by Bylaw 1406, 2025.





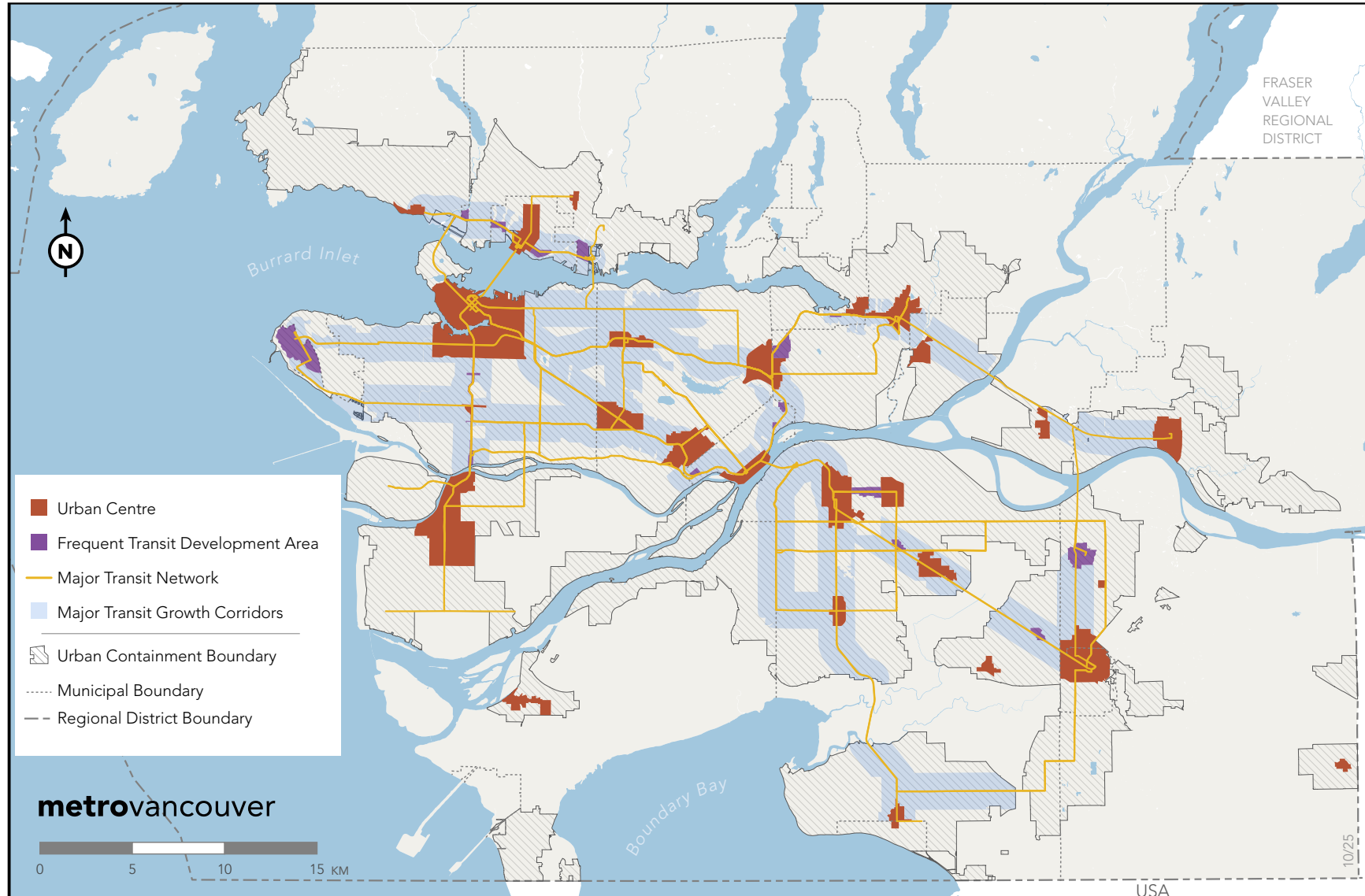
Revised by Bylaw 1406, 2025.

## MAP 4 Urban Centres and Frequent Transit Development Areas



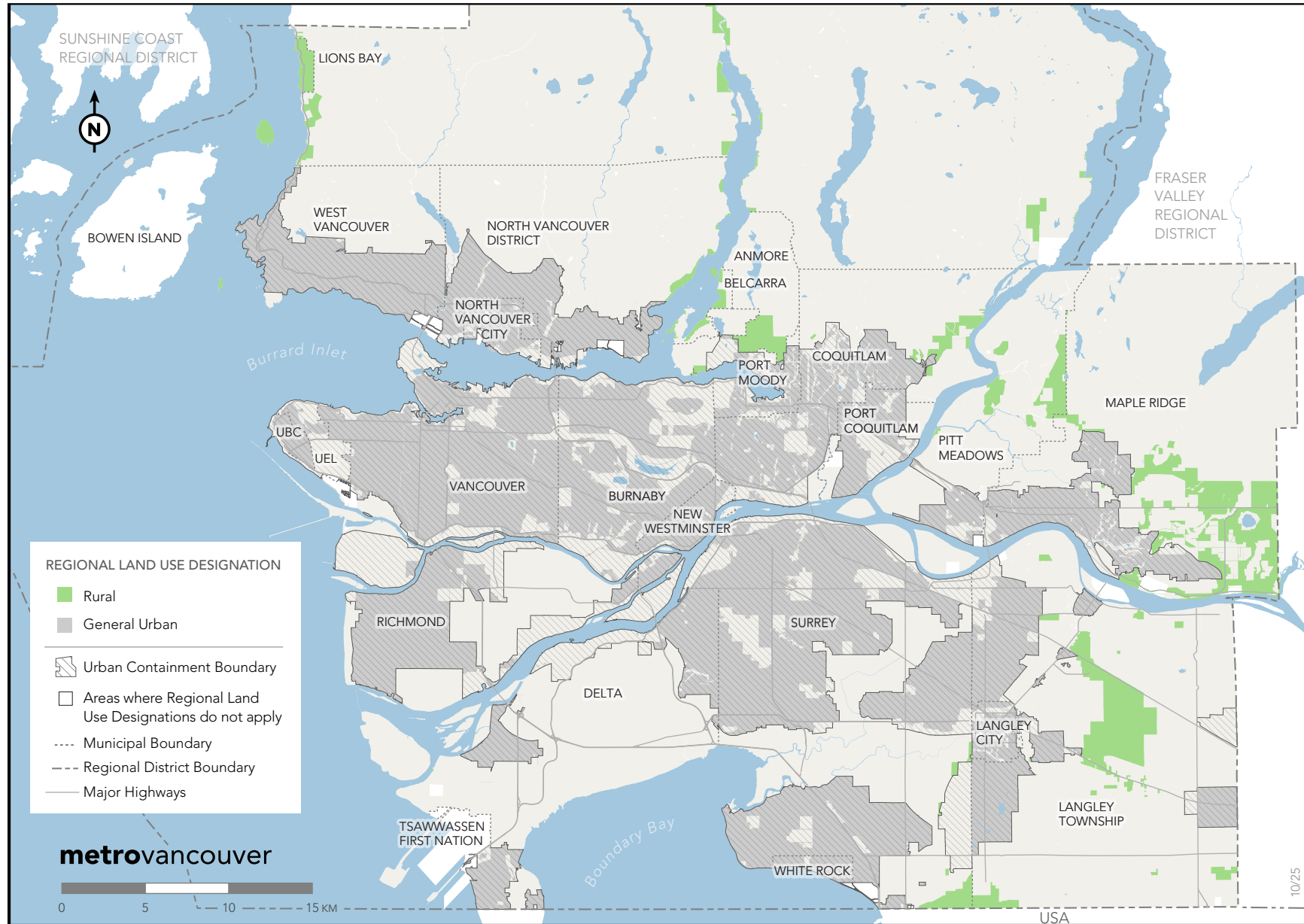
Urban Centres and FTDAs are overlays for structuring residential and employment growth. The boundaries are identified by member jurisdictions. Urban Centre and FTDA overlays do not alter the intent and policies of the underlying regional land use designations. Revised by Bylaw 1406, 2025.

## MAP 5 Major Transit Growth Corridors and Major Transit Network



The Major Transit Growth Corridors include a buffer area of approximately 1km on either side of select segments of the Major Transit Network. Not all areas within MTGCs are appropriate for growth. The Major Transit Network is defined in Transport 2050 and is subject to periodic updates; it is shown for illustrative purposes only. Revised by Bylaw 1396, 2024.

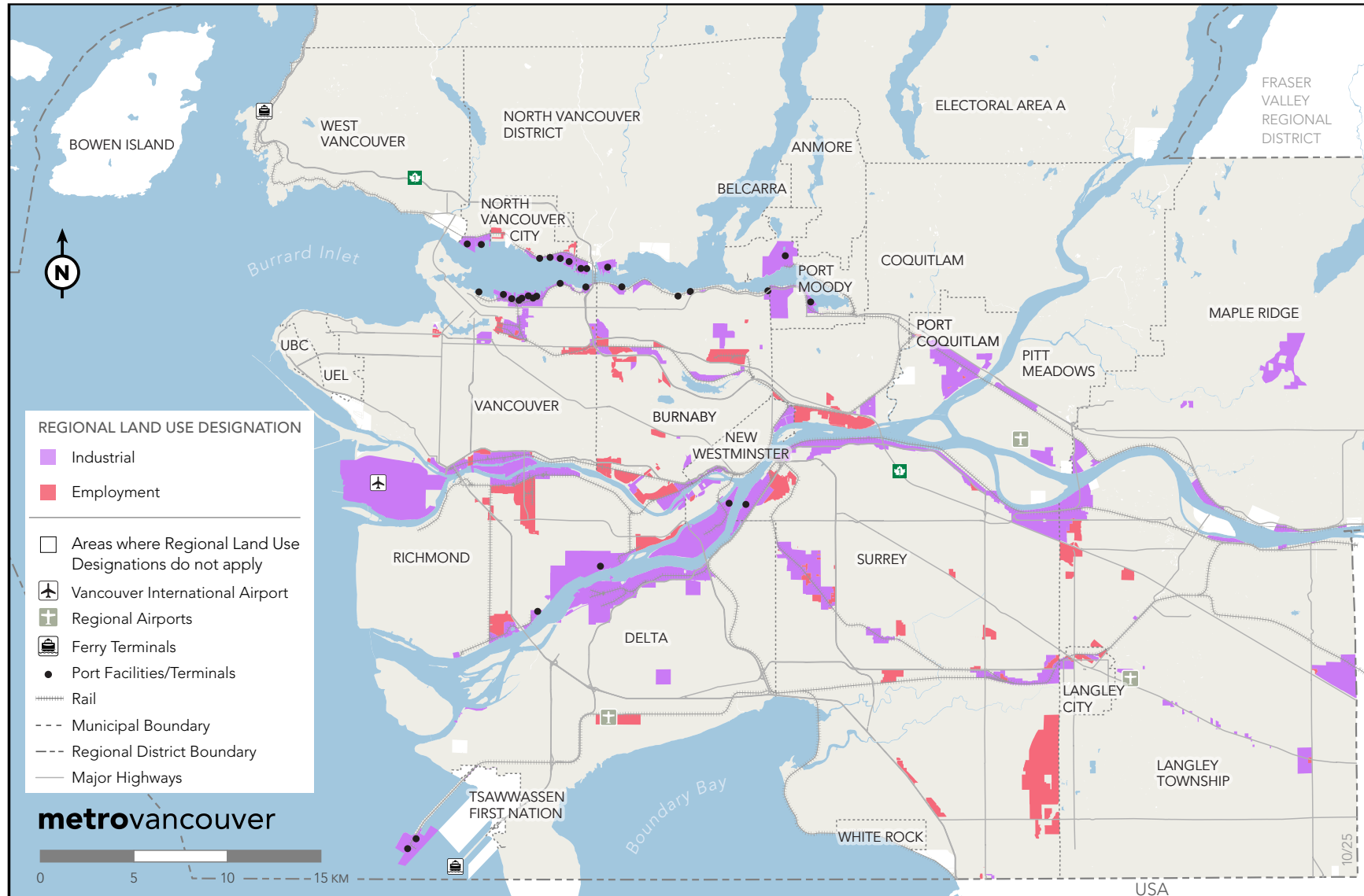
# MAP 6 Rural Lands



Revised by Bylaw 1406, 2025.

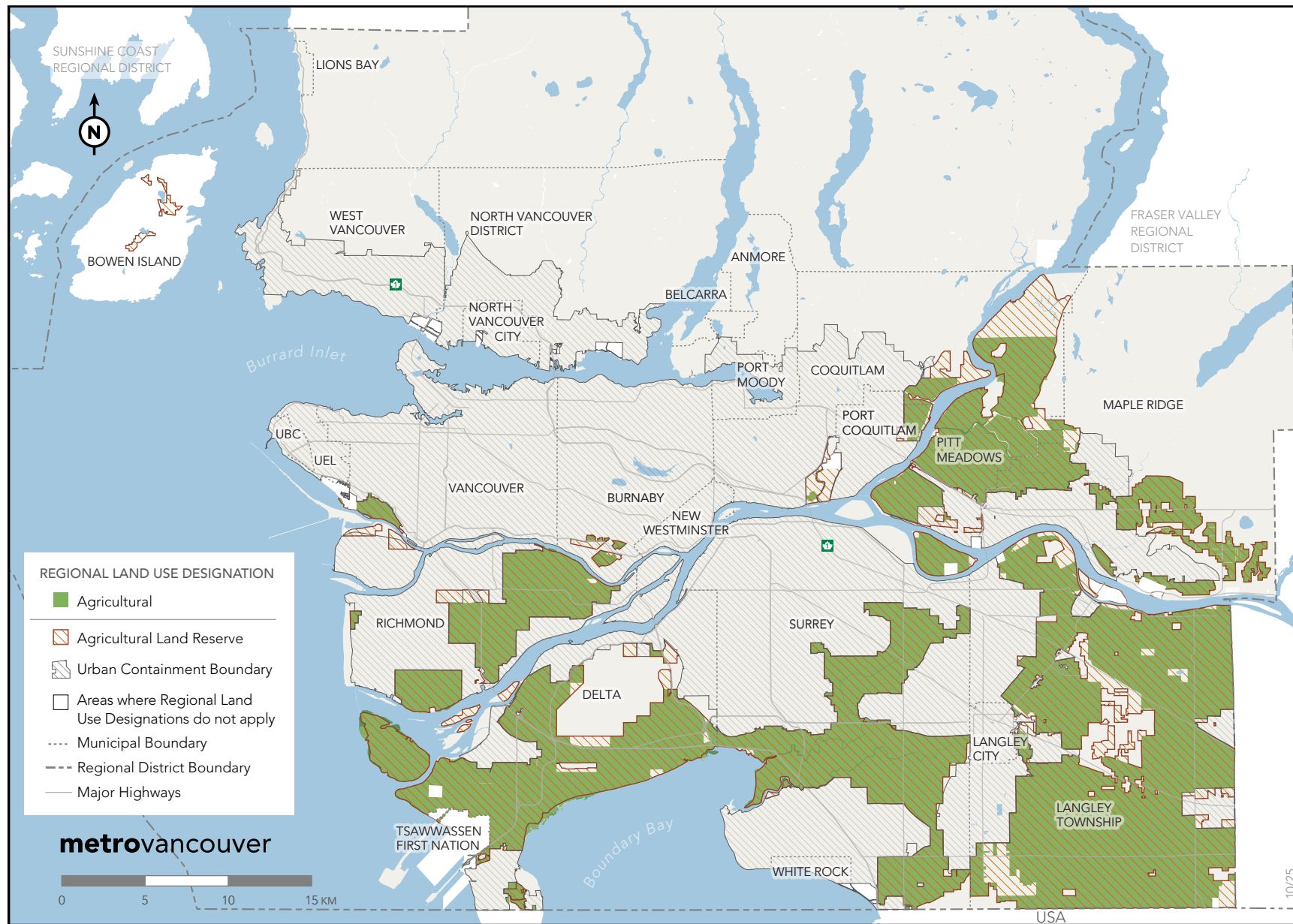


# MAP 7 Industrial and Employment Lands



The depicted highway network, rail lines, and port/airport transportation facilities are shown for reference only. Revised by Bylaw 1396, 2024.

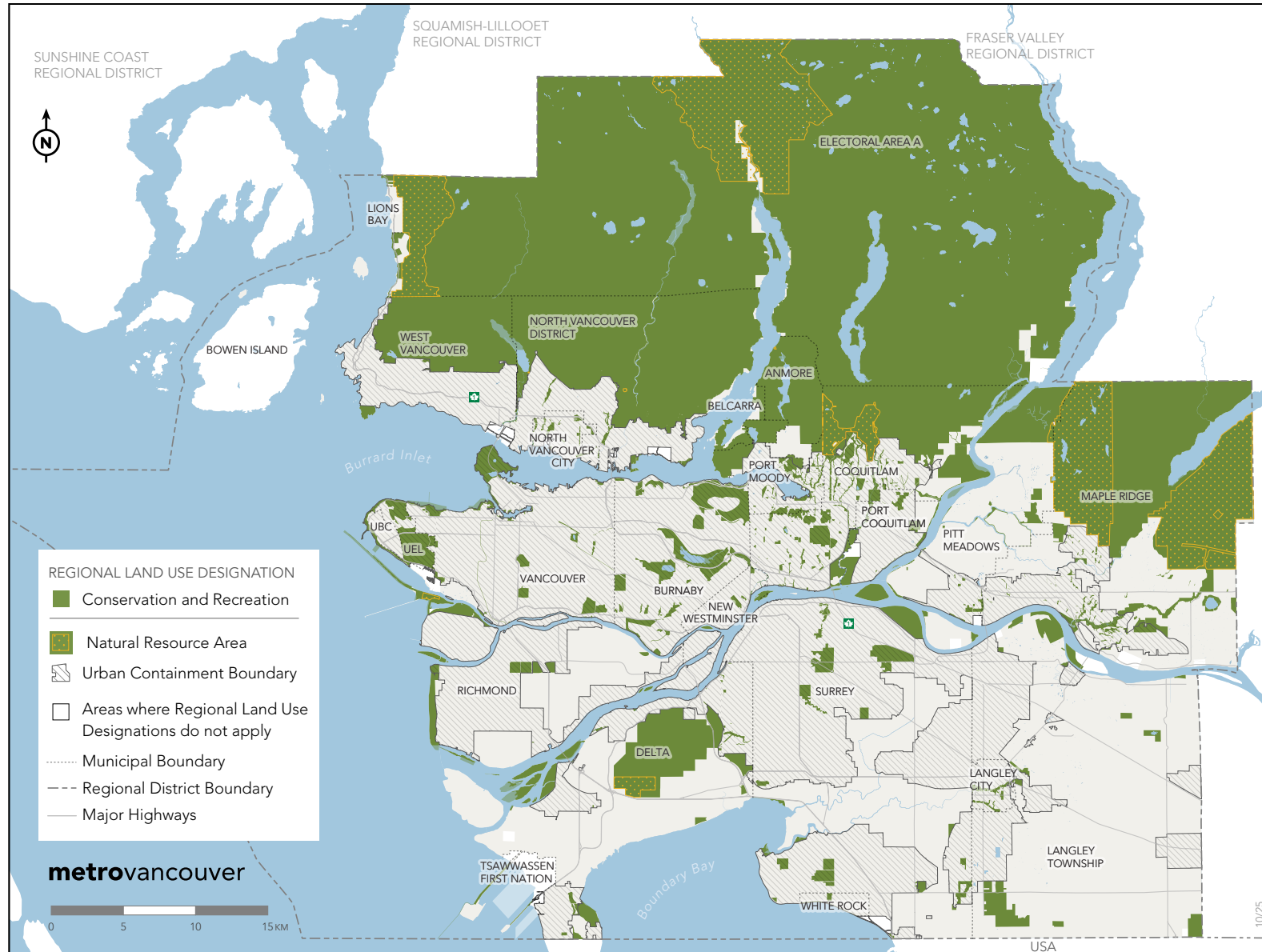
## MAP 8 Agricultural Lands



For the latest Agricultural Land Reserve geography, please visit the Agricultural Land Commission website. Revised by Bylaw 1406, 2025.

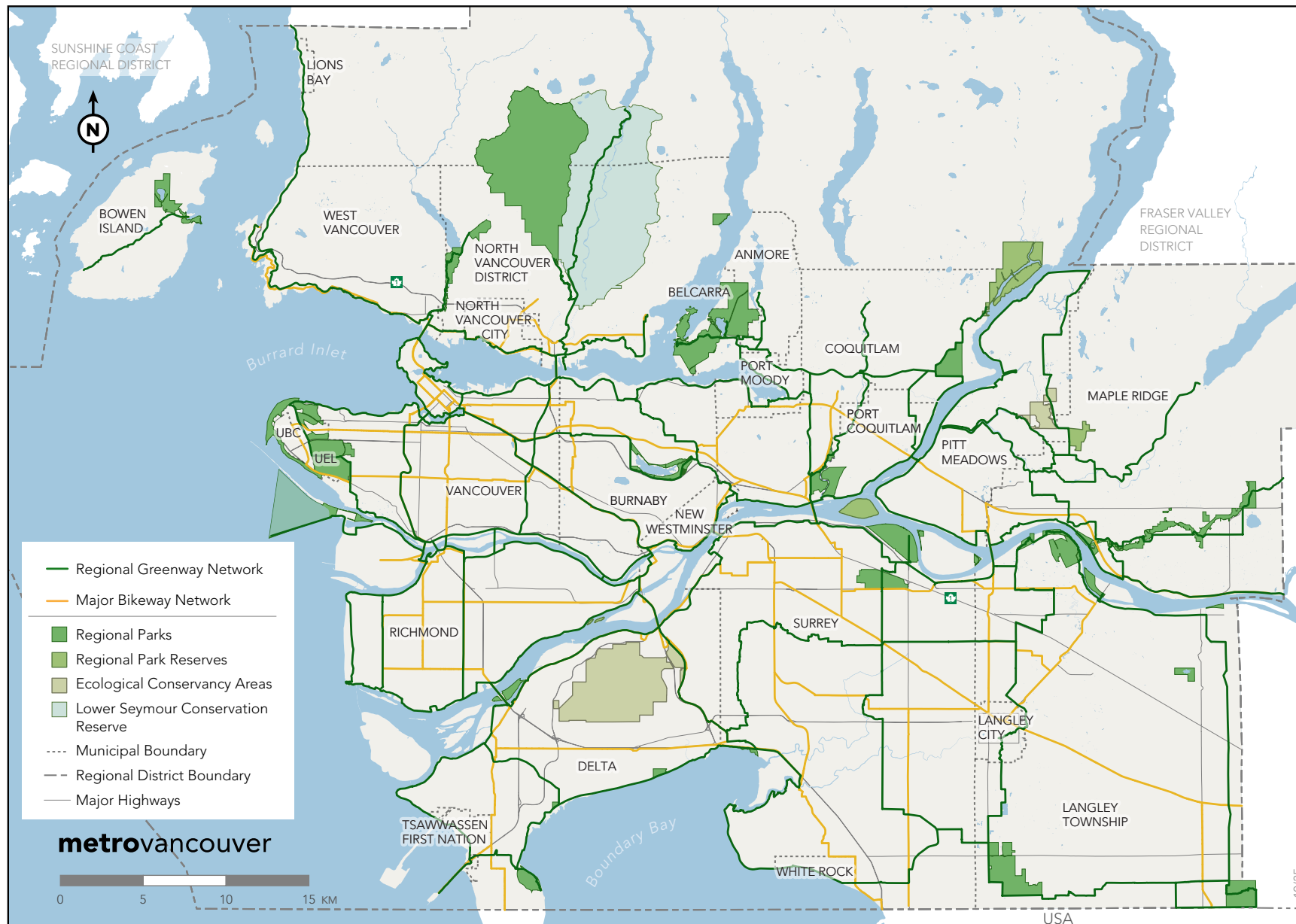


# Conservation and Recreation Lands



The Natural Resource Areas Overlay was collated by Metro Vancouver from several data sources including: Active managed forest tenure licences, relevant OCPs, GVS&DD, and GWWD. Revised by Bylaw 1396, 2024.

## MAP 10 Regional Greenway Network and Major Bikeway Network

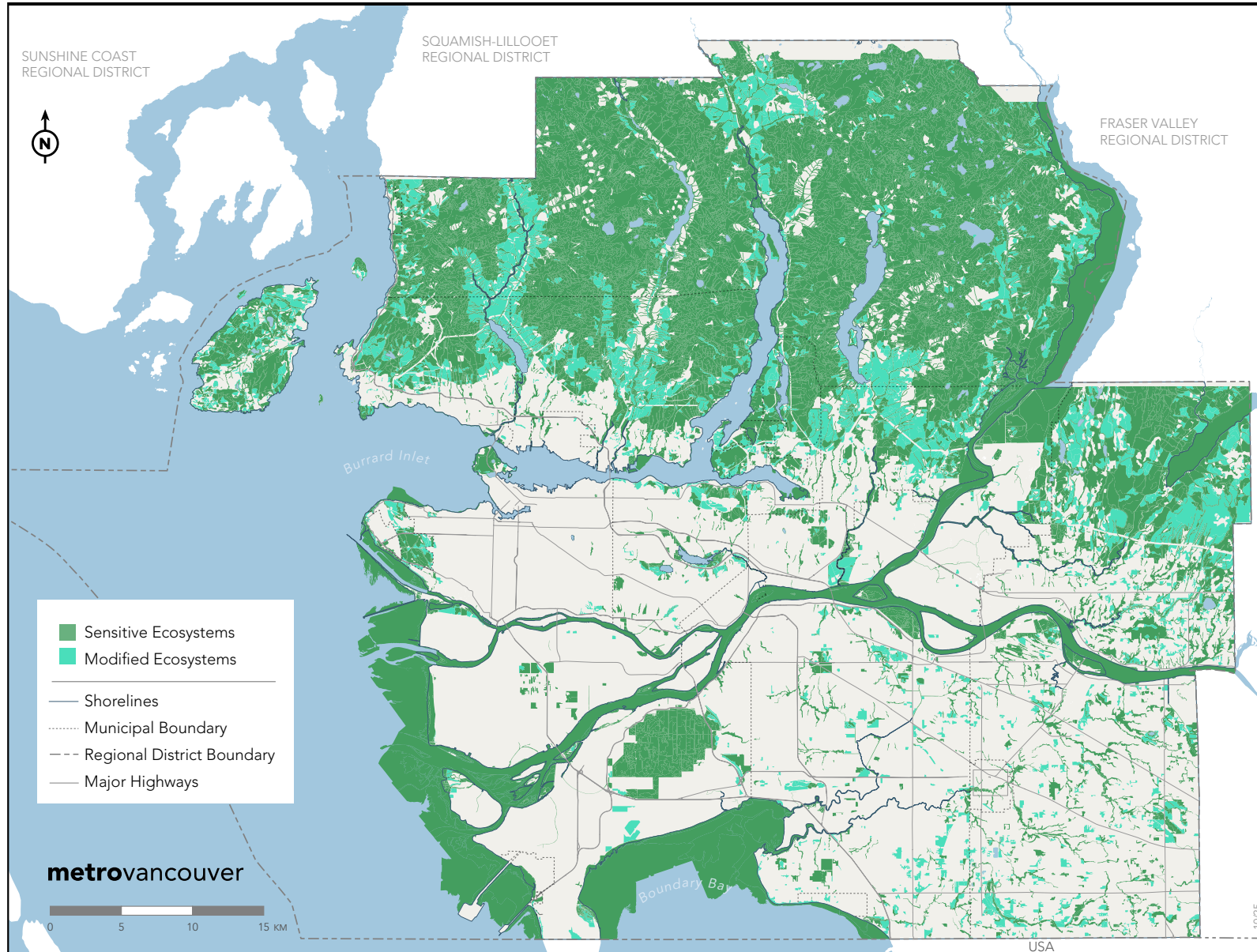


The Regional Greenway Network and Major Bikeway Network (MBN) are concepts illustrating existing and planned active transportation corridors of regional significance. The MBN is being developed through TransLink's Transport 2050 process and will be updated following the identification of a preferred MBN concept. Revised by Bylaw 1380, 2024.



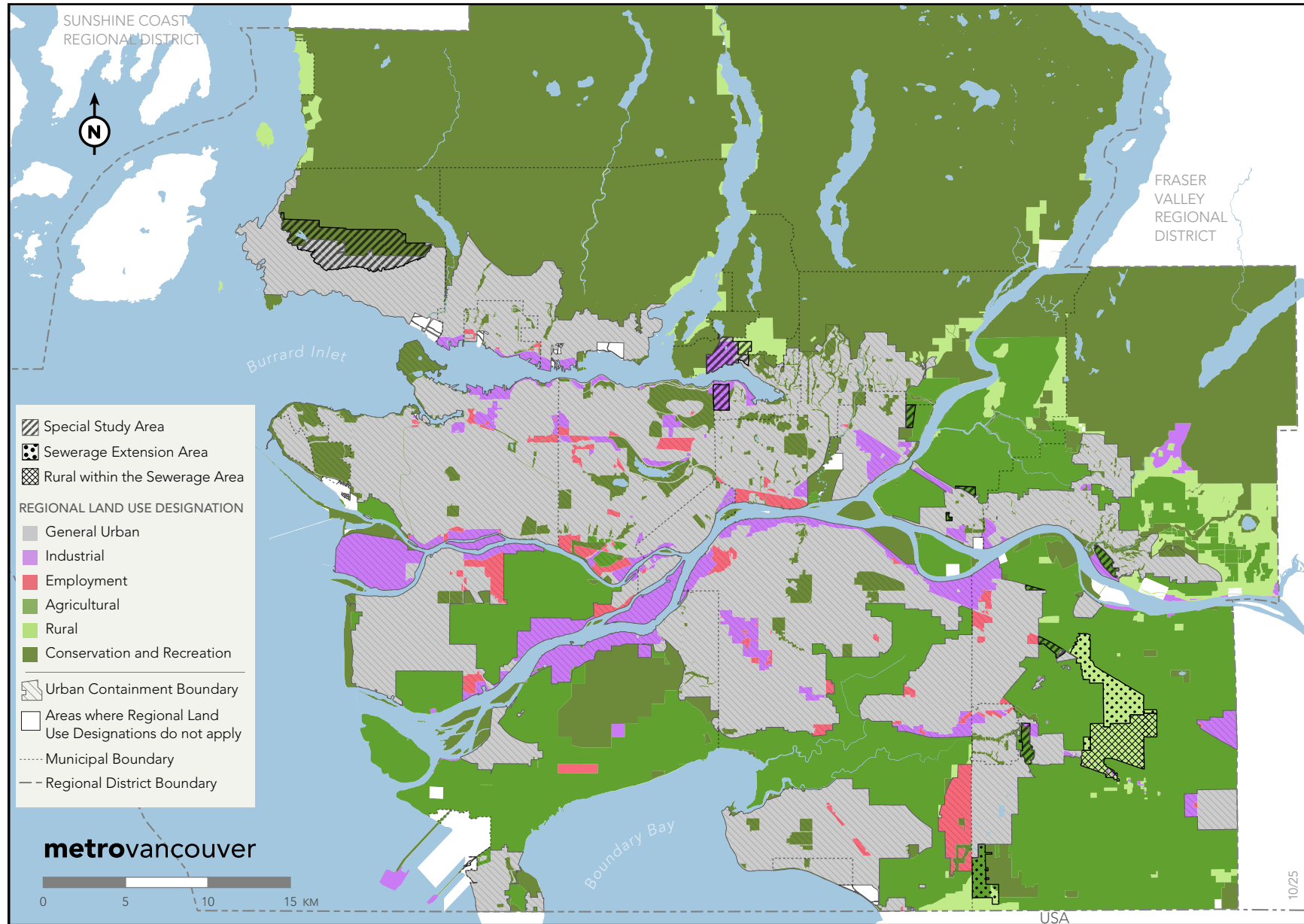


# MAP 11 Sensitive Ecosystem Inventory



Map for reference only and does not reflect Regional Land Use Designations. An online SEI Tool is available at [gis.metrovancover.org/mvmaps/SEI](https://gis.metrovancover.org/mvmaps/SEI) and downloadable from [metrovancover.org/data](https://metrovancover.org/data). The SEI data set is from 2014. Local ecological datasets may be more current and detailed. Revised by Bylaw 1380, 2024.

## MAP 12 Special Study Areas and Sewerage Extension Areas



Revised by Bylaw 1406, 2025.