

Update of Metro Vancouver Social Equity and Regional Growth - Inequity Baseline Data Indicator Maps (from 2016 Census to 2021 Census)

# of Maps	Map No.	2021 Census Data				2016 Census Data	
		Maps (name revised)	DA-level Variables (name revised)	Unit Type	Universe	Maps	TAZ-level Variables
1	1	Visible Minority	Visible_Minority	Percentage	Population in private households	Visible Minority	__Total_visible_minority_population
			South_Asian	Percentage	Population in private households		__South_Asian
			Chinese	Percentage	Population in private households		__Chinese
			Black	Percentage	Population in private households		__Black
			Filipino	Percentage	Population in private households		__Filipino
			Latin_American	Percentage	Population in private households		__Latin_American
			Arab	Percentage	Population in private households		__Arab
			Southeast_Asian	Percentage	Population in private households		__Southeast_Asian
			West_Asian	Percentage	Population in private households		__West_Asian
			Korean	Percentage	Population in private households		__Korean
			Japanese	Percentage	Population in private households		__Japanese
			Visible_Minority_NotIncludedElseWhere	Percentage	Population in private households		
			Visible_Minority_Multiple	Percentage	Population in private households		
			Not_Visible_Minority	Percentage	Population in private households		__Not_a_visible_minority
2	7	Ethnic Diversity Index	Shannon_Equitability_Index_of_Visible_Minority	Index	Population in private households	Ethnic Diversity Index	EthnicDiversityIndex
3	2	Indigenous	Indigenous_Identity	Percentage	Population in private households	Indigenous	__Aboriginal_identity
4	3	Seniors	Age_65andOver	Percentage	Population	Seniors	__65_years_and_over
5	4	Children	Age_0to14	Percentage	Population	Children	__0_to_14_years
6	8	Median Age	Age_Median	Integer	Population	Median Age	Median_age_of_the_population
7	5	Lone-parent Family	Lone-parent_Family_in_TotalCensusFamily	Percentage	Census families in private household	Single Parent	__Total_loneparent_families_by_sex_of_parent
8	6	Female-headed Lone-parent Family	Lone-parent_Female_Family_in_TotalCensusFamily	Percentage	Census families in private household	Female-Headed Households	__Female_parent_1
9	9	No Knowledge of Official Languages	No_Knowledge_Official_Language	Percentage	Population excluding institutional residents	No Knowledge of Official Languages	OfficialLanguage_Knowledge
			Economic_Family_Income_AfterTax_Bottom_Decile	Percentage	Population in private households		
			Economic_Family_Income_AfterTax_2nd_Decile	Percentage	Population in private households		
			Economic_Family_Income_AfterTax_3rd_Decile	Percentage	Population in private households		
			Economic_Family_Income_AfterTax_4th_Decile	Percentage	Population in private households		
			Economic_Family_Income_AfterTax_5th_Decile	Percentage	Population in private households		
			Economic_Family_Income_AfterTax_6th_Decile	Percentage	Population in private households		
			Economic_Family_Income_AfterTax_7th_Decile	Percentage	Population in private households		
			Economic_Family_Income_AfterTax_8th_Decile	Percentage	Population in private households		
			Economic_Family_Income_AfterTax_9th_Decile	Percentage	Population in private households		
			Economic_Family_Income_AfterTax_Top_Decile	Percentage	Population in private households		
10	14	Income Inequality Ratio	Income_Inequality_Ratio	ratio	Population in private households	Income Inequality Ratio	IncomeInequalityRatio
11	10	Median Total Income of Households	Median_Total_Income_HHs_2020	Dollar (CAD)	Population in private households	Median Household Income	__Median_total_income_of_households_in_2015_dollar
12	11	Poverty Ratio - Low Income Measure (LIM)	Prevalence_Low_Income_after_tax_LIMAT	Percentage	Population in private households	Poverty Ratio - Low Income Measure (LIM)	Prevalence_of_low_income_based_on_the_Lowincome_measure_after_ta
13	12	Unemployment Rate	Unemployment_Rate	Percentage	Population aged 15 years and over	Unemployment Rate	Unemployment_rate
14	16	Housing Cost Burden	Housing_Cost_30orMore_ShelterCostsOnly	Percentage	Non-farm, non-reserve private dwellings	Housing Cost Burden	__Spending_30percent_or_more_of_income_on_shelter_costs
15	17	Housing Tenure - Renters	Renters	Percentage	Private households	Housing Tenure - Renters	__Renter
16	18	Housing Tenure - Owners	Owners	Percentage	Private households	Housing Tenure - Owners	__Owner
17	19	Median Home Value	Median_Dwelling_Value	Dollar (CAD)	Private households	Median Home Value	__Median_value_of_dwellings_dollar_
18	20	Housing Suitability (Overcrowding)	Housing_Suitability_Not_Suitable	Percentage	Private households	Housing Suitability (Overcrowding)	__Not_suitable
19	22	Subsidized Housing	Tenant_HHs_SubsidizedHousing	Percentage	Tenant households in non-farm, non-reserve private dwellings	Subsidized Housing	__percent_of_tenant_households_in_subsidized_housing_1
			Education_NoCertificate_Diploma_Degree_25to64	Percentage	Population aged 25 to 64 years in private households		__No_certificate_diploma_or_degree_1
			Education_HighSchoolDiploma_25to64	Percentage	Population aged 25 to 64 years in private households		__Secondary_high_school_diploma_or_equivalency_certificate
			Education_PostSecondary_25to64	Percentage	Population aged 25 to 64 years in private households		
20	25	No Post-secondary Education	Education_No_PostSecondary_25to64	Percentage	Population aged 25 to 64 years in private households	No Post-secondary Education	Education_HS_or_less
			Commute_Time_LessThan15min	Percentage	Employed labour force aged 15 years and over		
			Commute_Time_15to29min	Percentage	Employed labour force aged 15 years and over		
			Commute_Time_30to44min	Percentage	Employed labour force aged 15 years and over		
			Commute_Time_45to59min	Percentage	Employed labour force aged 15 years and over		
			Commute_Time_60minAndAbove	Percentage	Employed labour force aged 15 years and over		
21	34	Average Commute Time	Commute_Time_Average	Minute	Employed labour force aged 15 years and over	Average Commute Time	Average_Commute_Time
22	44	Long Term Residency (Mobility Status)	Non_Movers_5Years	Percentage	Population in private households	Long Term Residency (Mobility Status)	__Nonmovers

Data Notes:

All values are at DA levels. They are either directly extracted from or calculated based on Census Profile, 2021 Census of Population (Catalogue number 98-316-X2021001).

Totals may not equal the sum of their parts due to data suppression or random rounding. If data is suppressed to meet the confidentiality requirements of the Statistics Act, it is flagged as 999.

Unless otherwise specified, all data in housing products are for private dwellings occupied by usual residents, rather than for unoccupied private dwellings or dwellings occupied solely by foreign residents or by temporarily present persons.

Data Source:

[Statistics Canada. 2023. Census Profile. 2021 Census of Population. Statistics Canada Catalogue number 98-316-X2021001. Ottawa. Released February 8, 2023.](#)

References:

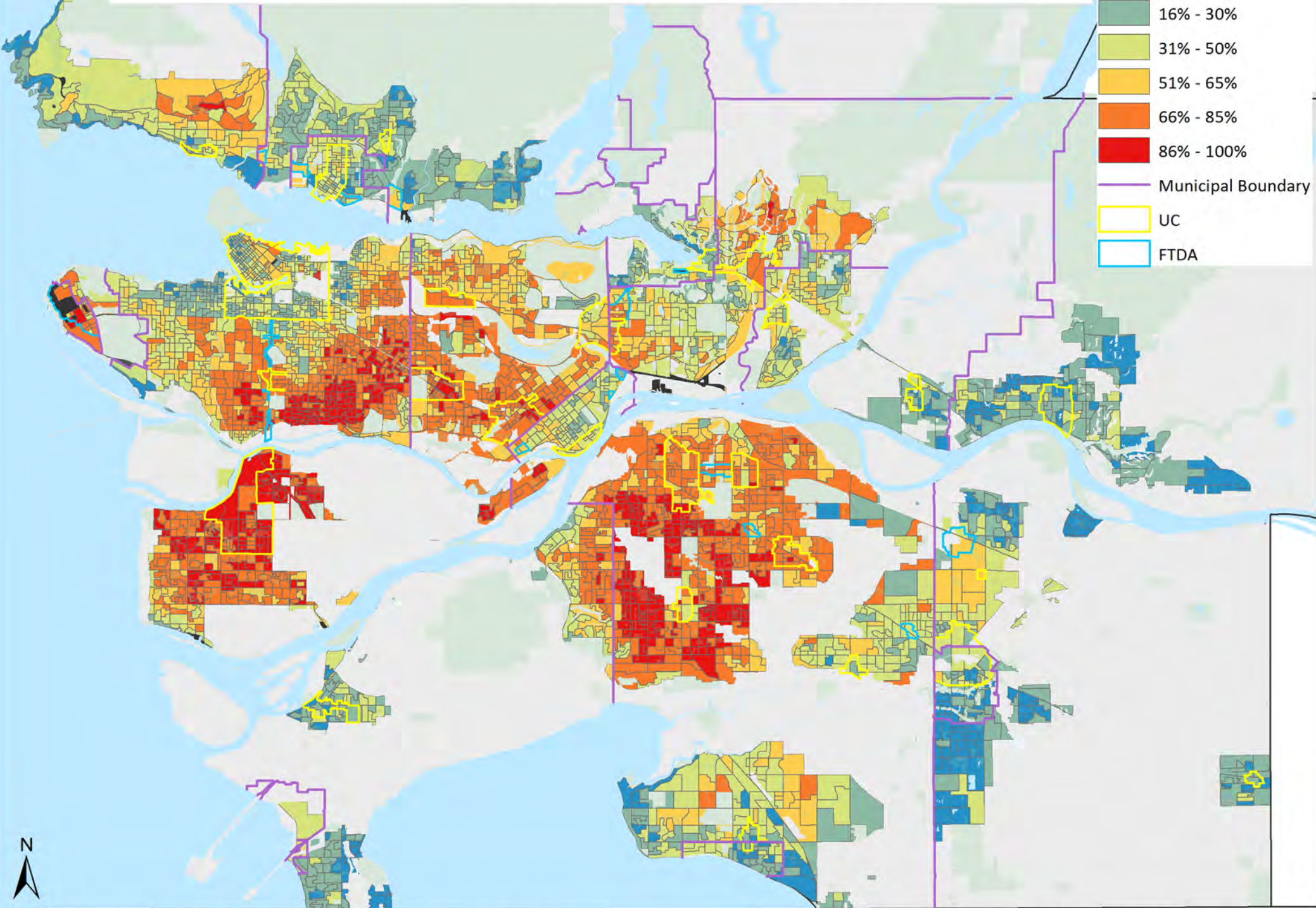
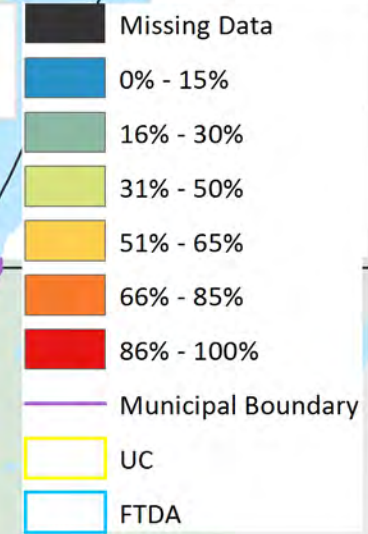
[Metro Vancouver Social Equity and Regional Growth - Inequity Baseline Data Indicator Maps Phase 2 Report Attachment \(2021\)](#)

[Metro Vancouver Social Equity and Regional Growth - Phase 2 Report \(2021\)](#)



# Visible Minority

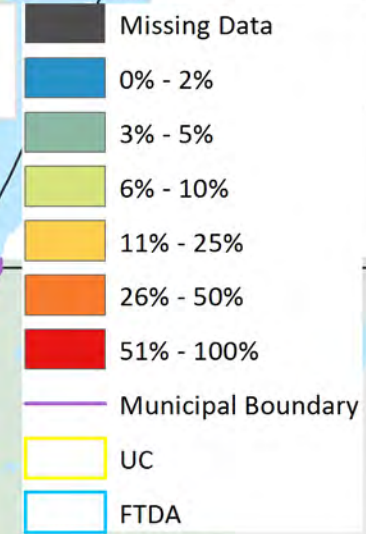
Proportion of population belonging to a visible minority group  
in total population in private households at DA level.





# Indigenous Identity

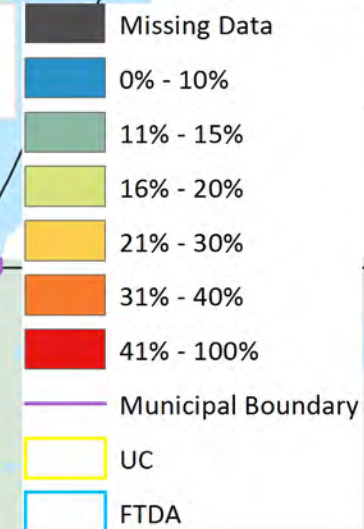
Proportion of population that reported Indigenous identity in total population in private households at DA level.





# Seniors

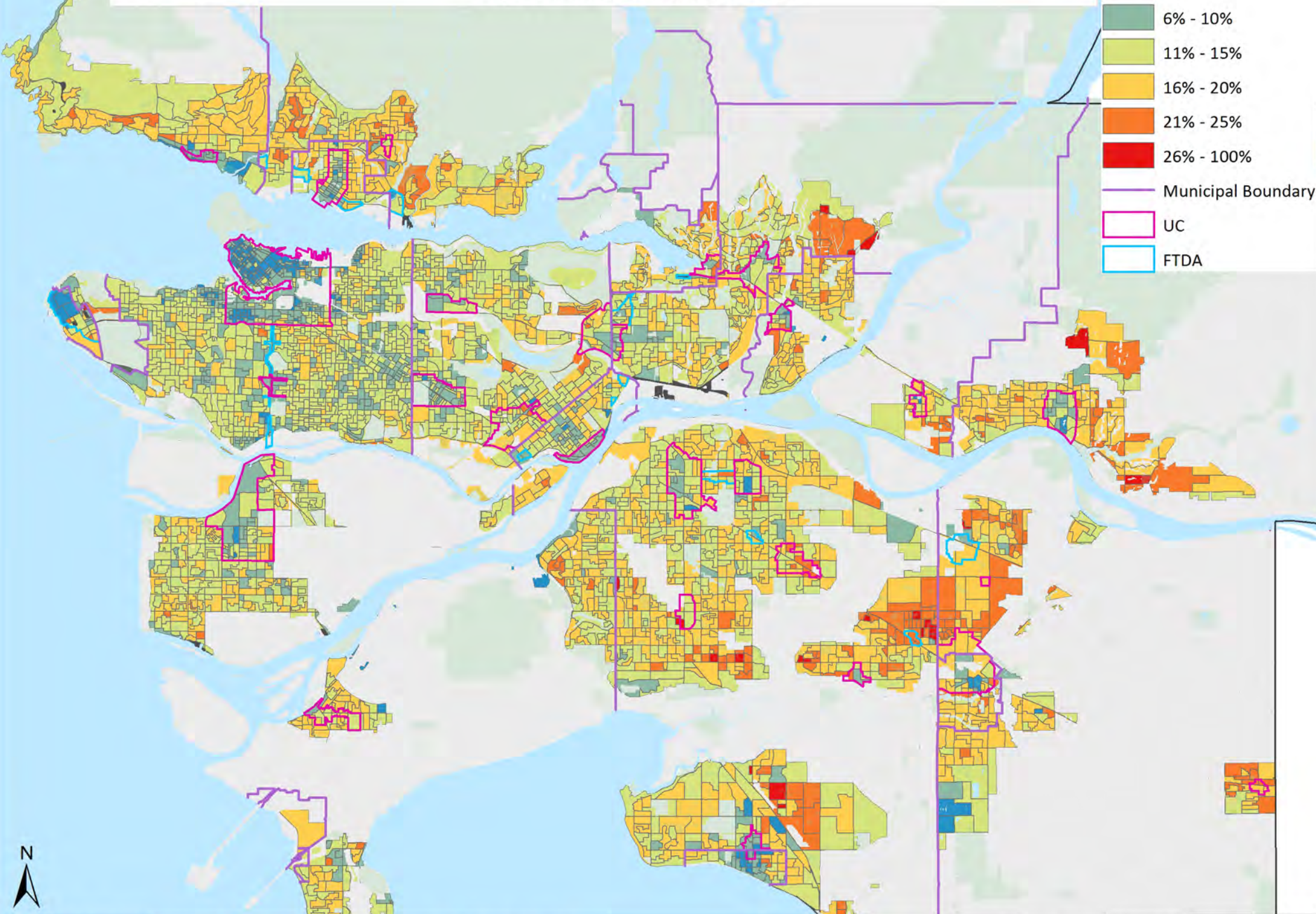
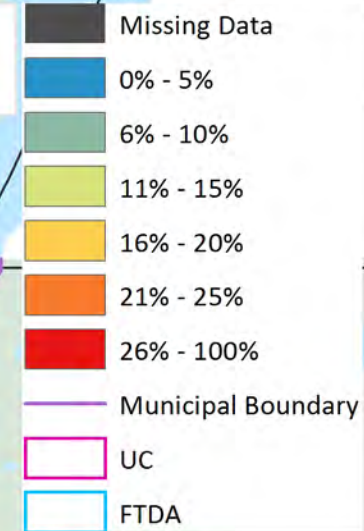
Proportion of population aged 65 years or above in total population at DA level.





# Children

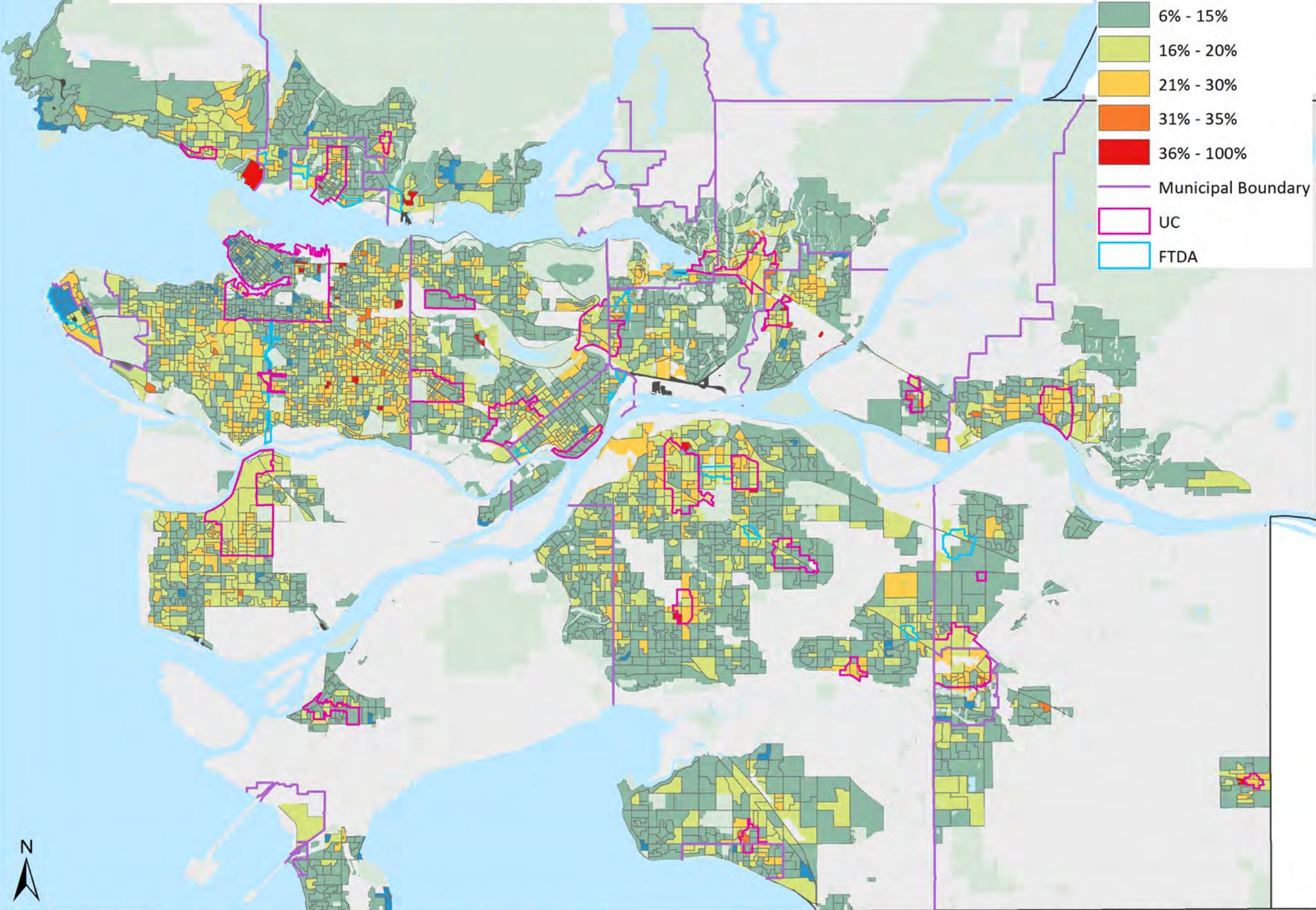
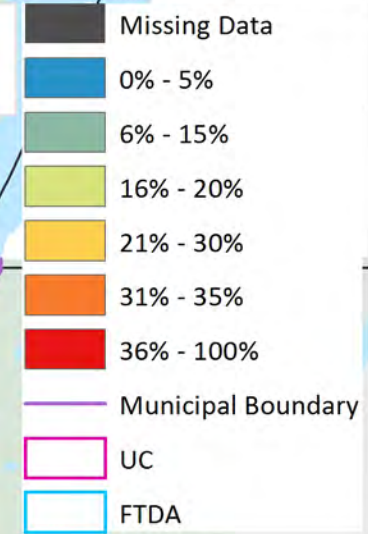
Proportion of population aged 0 to 14 years in total population at DA level.





# Lone-parent Family

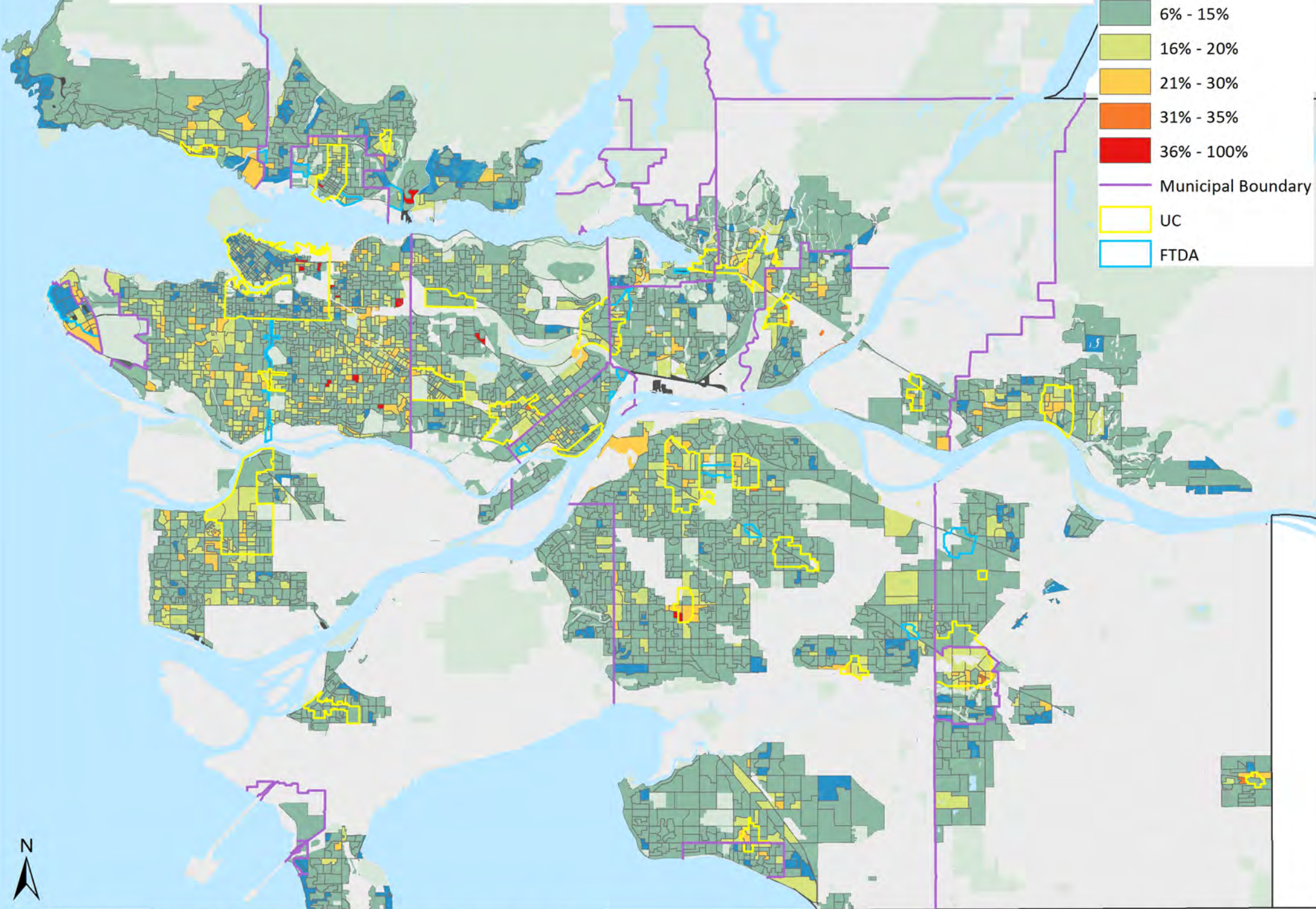
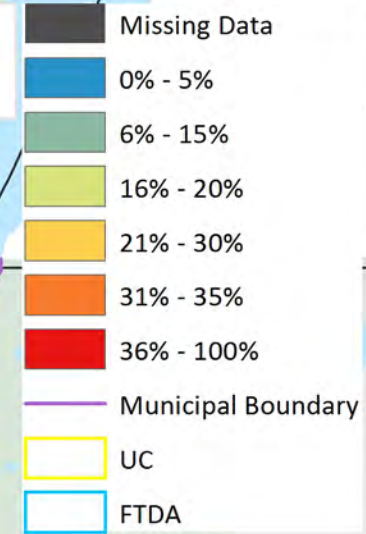
Percentage of the Census families in private households where a family has a lone parent at DA level.





# Female-headed Lone-parent Family

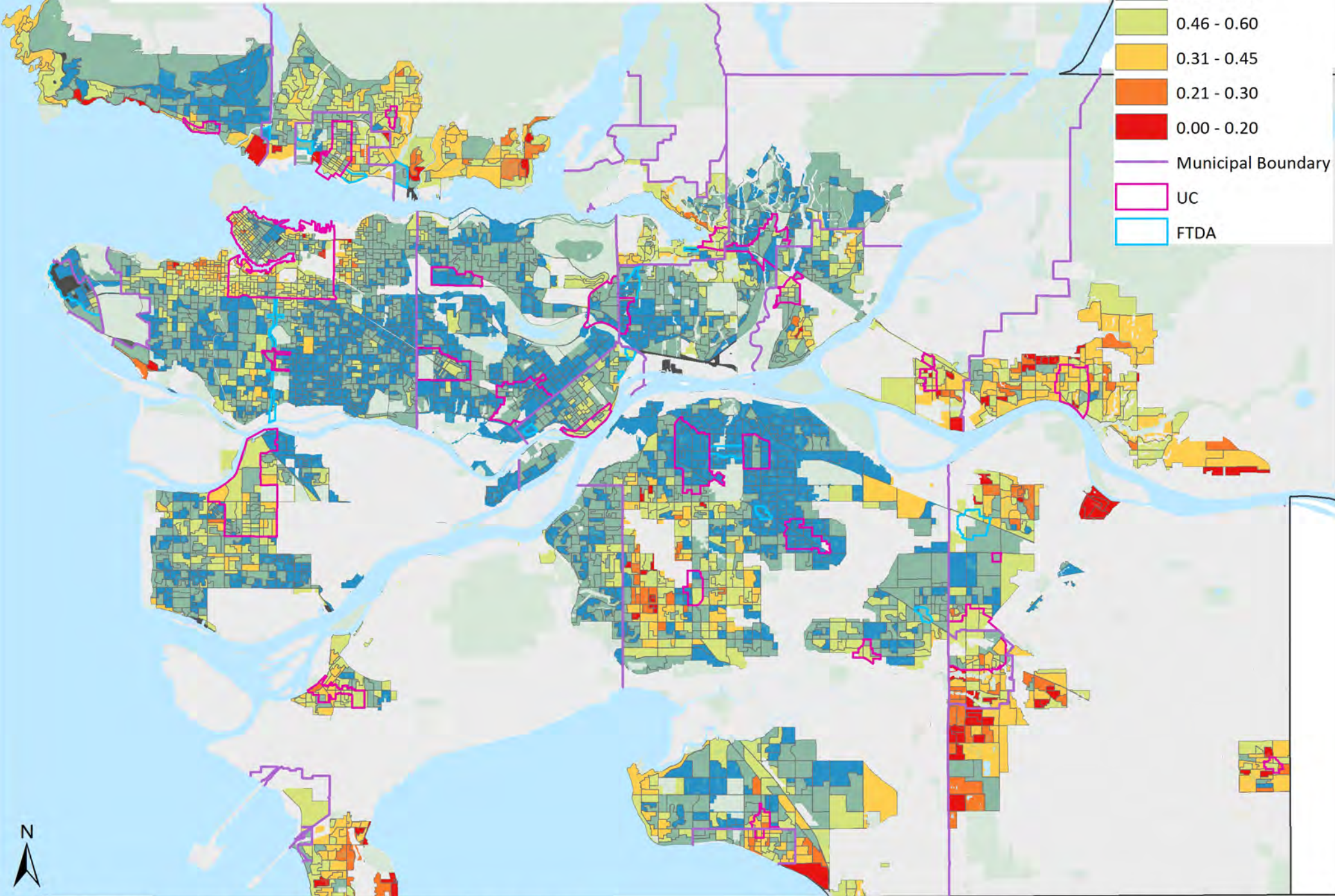
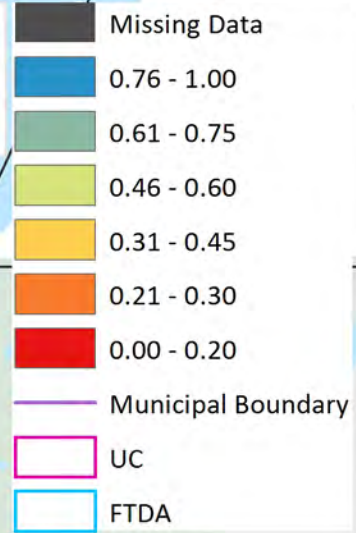
Percentage of the Census families in private households where a family has a lone female parent at DA level.





## Ethnic Diversity Index

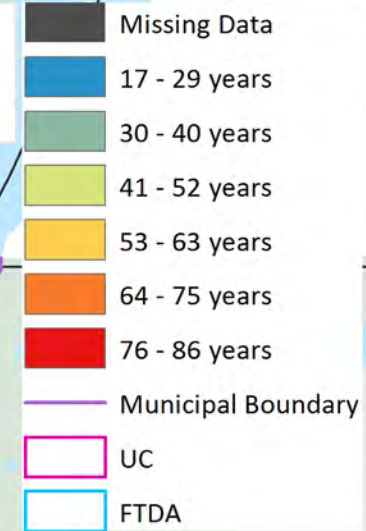
A measure of abundance and evenness among ethnic groups within a community. The diversity index ranges between 0 (no diversity) and 1 (infinite diversity). It is calculated using Shannon's Diversity Index from DA-level data.





## Median Age

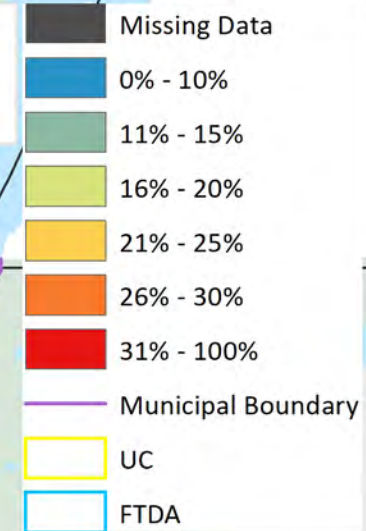
Median age of total population at DA level.  
The regional median age in 2021 was 41.





# No Knowledge of Official Languages

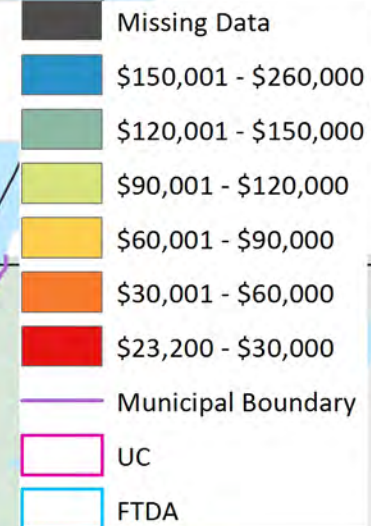
Percentage of the population without a conversational-level of knowledge in either of the official languages (English or French) at DA level.





# Median Total Income of Households

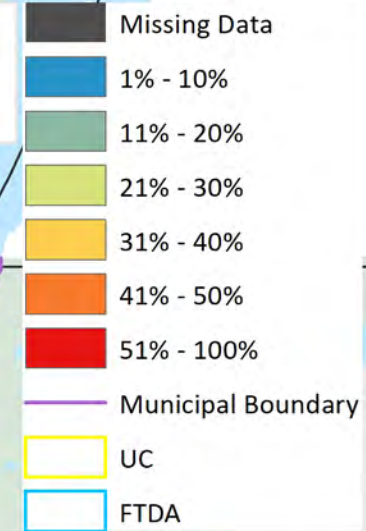
The median total income for households (before tax) at DA level.  
The regional median household income in 2021 was \$90,000.





## Poverty Ratio - Low Income Measure (LIM)

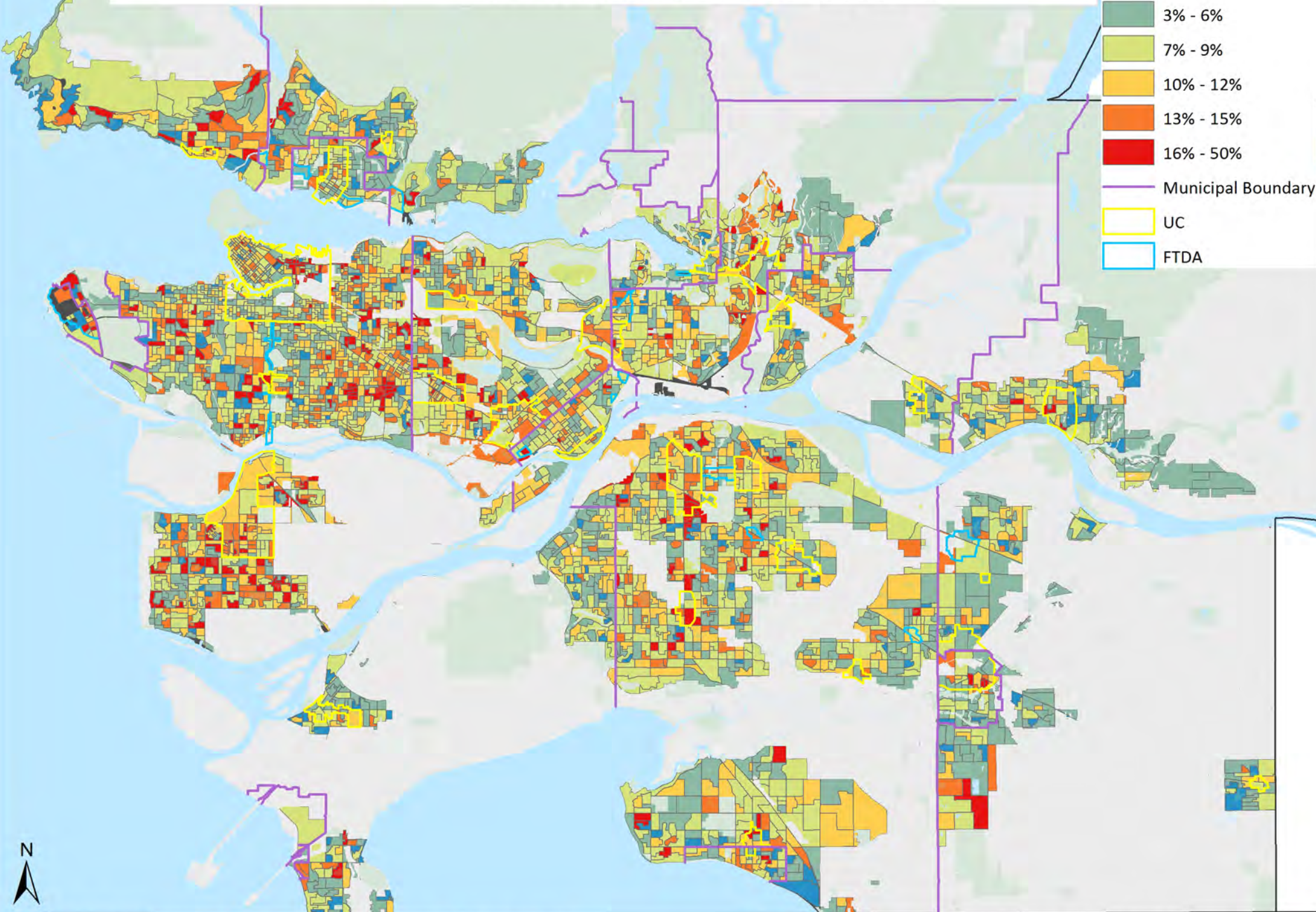
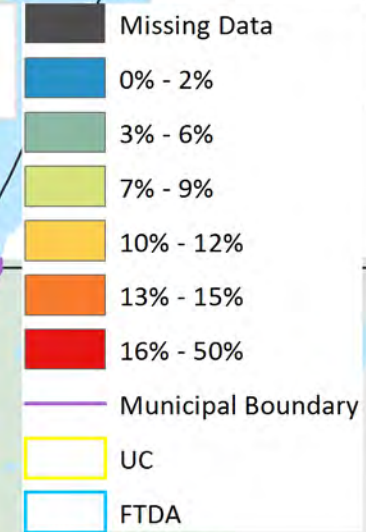
Prevalence of low income based on LIM-AT (low-income measure, after tax) at DA level. LIM-AT refers to a fixed percentage (50%) of median-adjusted income of private households.





# Unemployment Rate

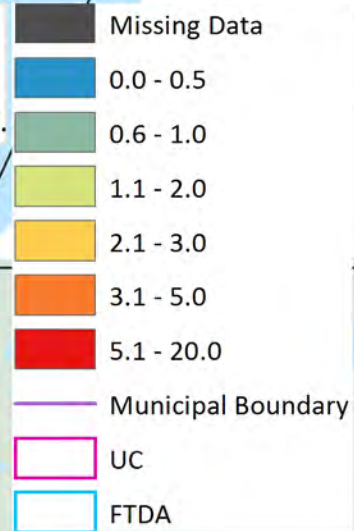
Number of unemployed persons aged 15 years and over,  
expressed as a percentage of the labour force at DA level.





## Income Inequality Ratio

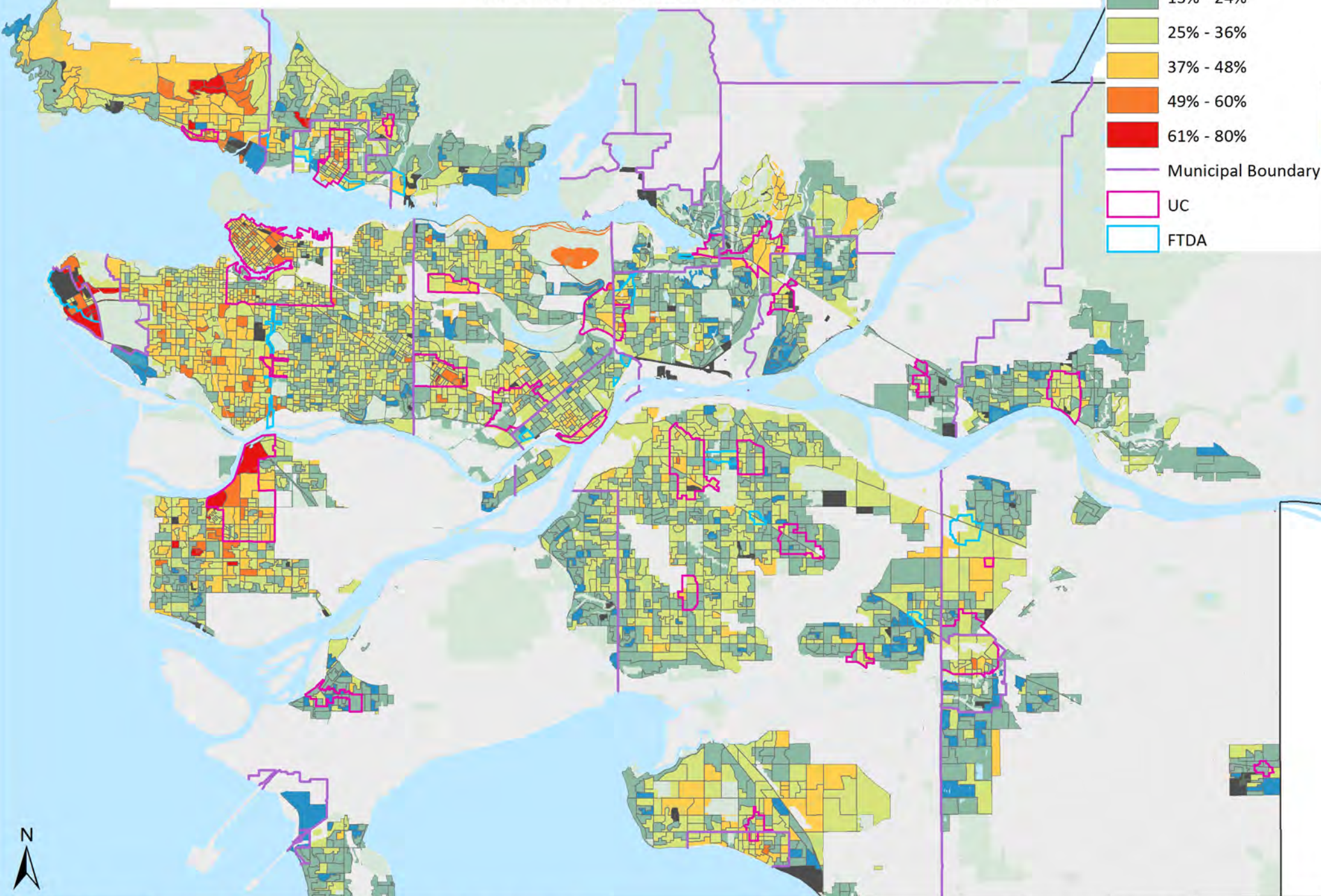
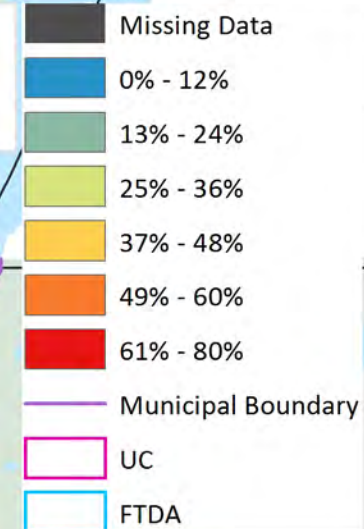
A measure of dispersion of incomes (adjusted after-tax economic family income for the population in private households) within a community, calculated as a ratio of 8th income decile to the 2nd income decile at DA level.





# Housing Cost Burden

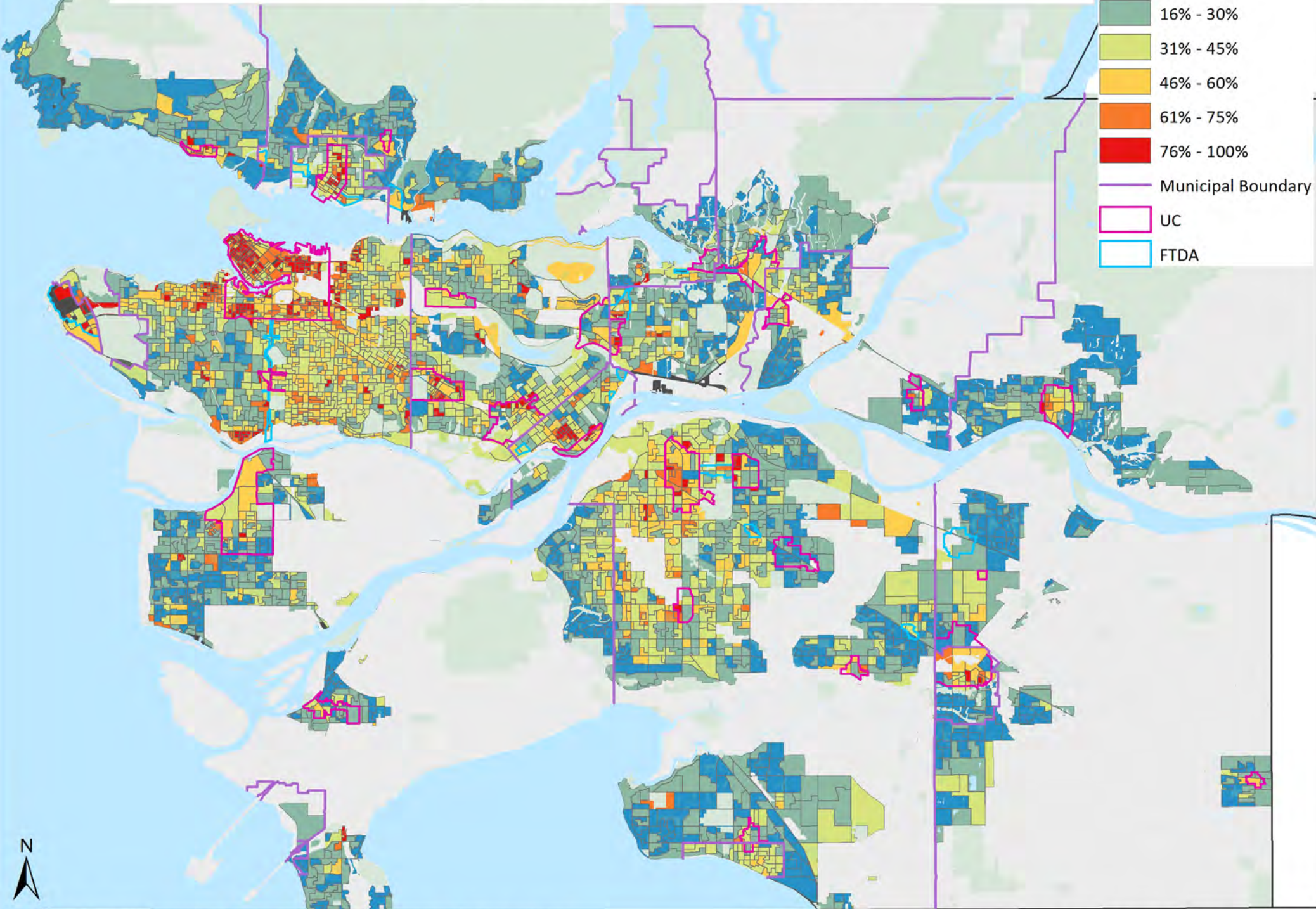
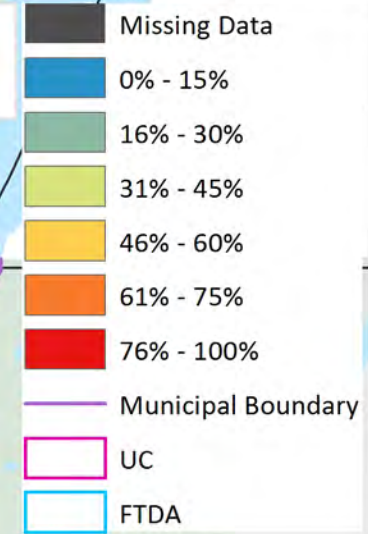
Proportion of households who spend 30% or more of their household total before-tax income on shelter costs in total households living in non-farm and non-reserve private dwellings.





# Housing Tenure - Renters

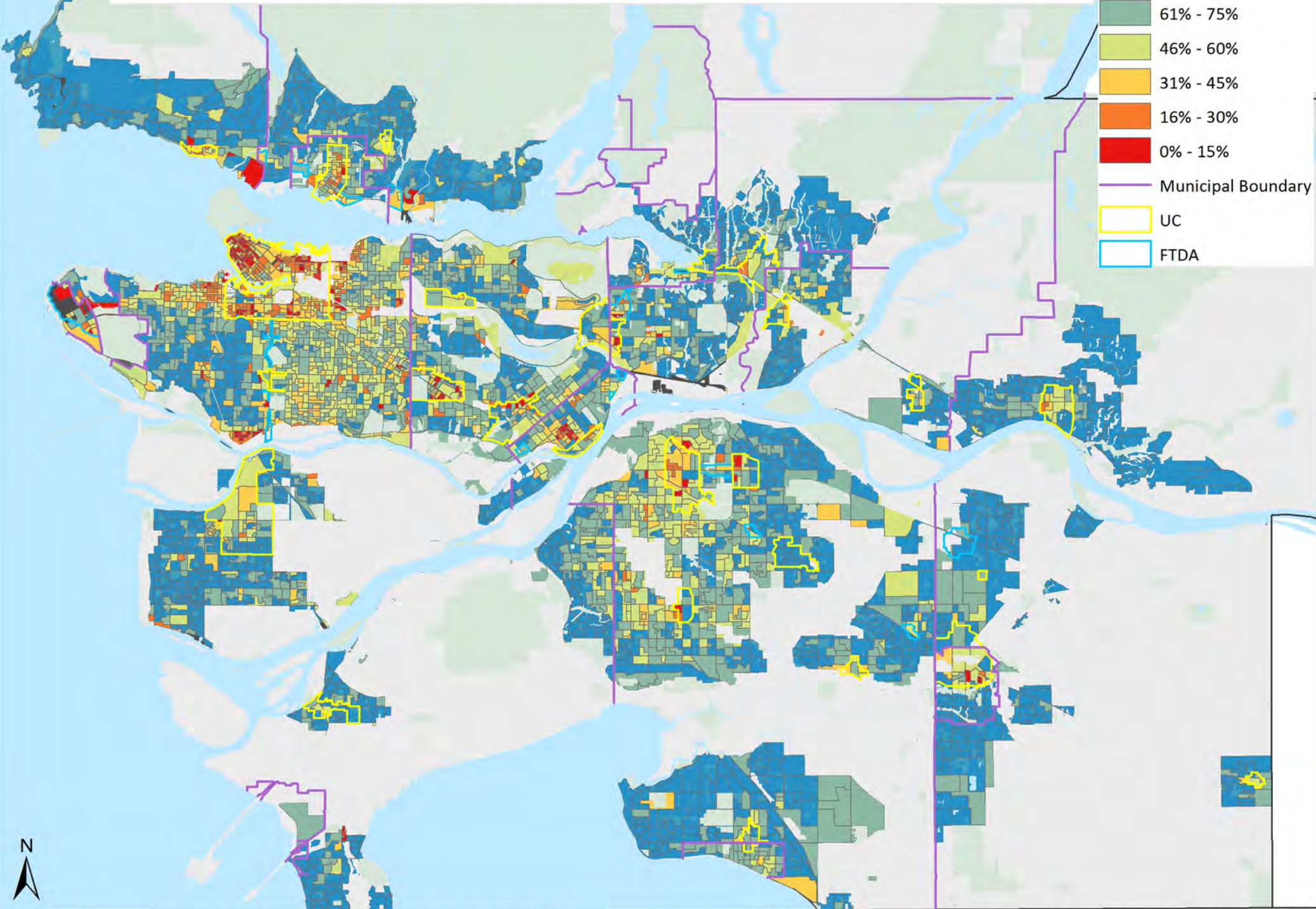
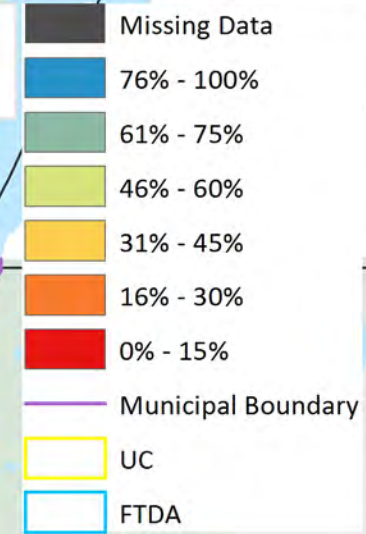
Percentage of private households occupied by renters  
(no member of the household owns the dwelling) .





# Housing Tenure - Owners

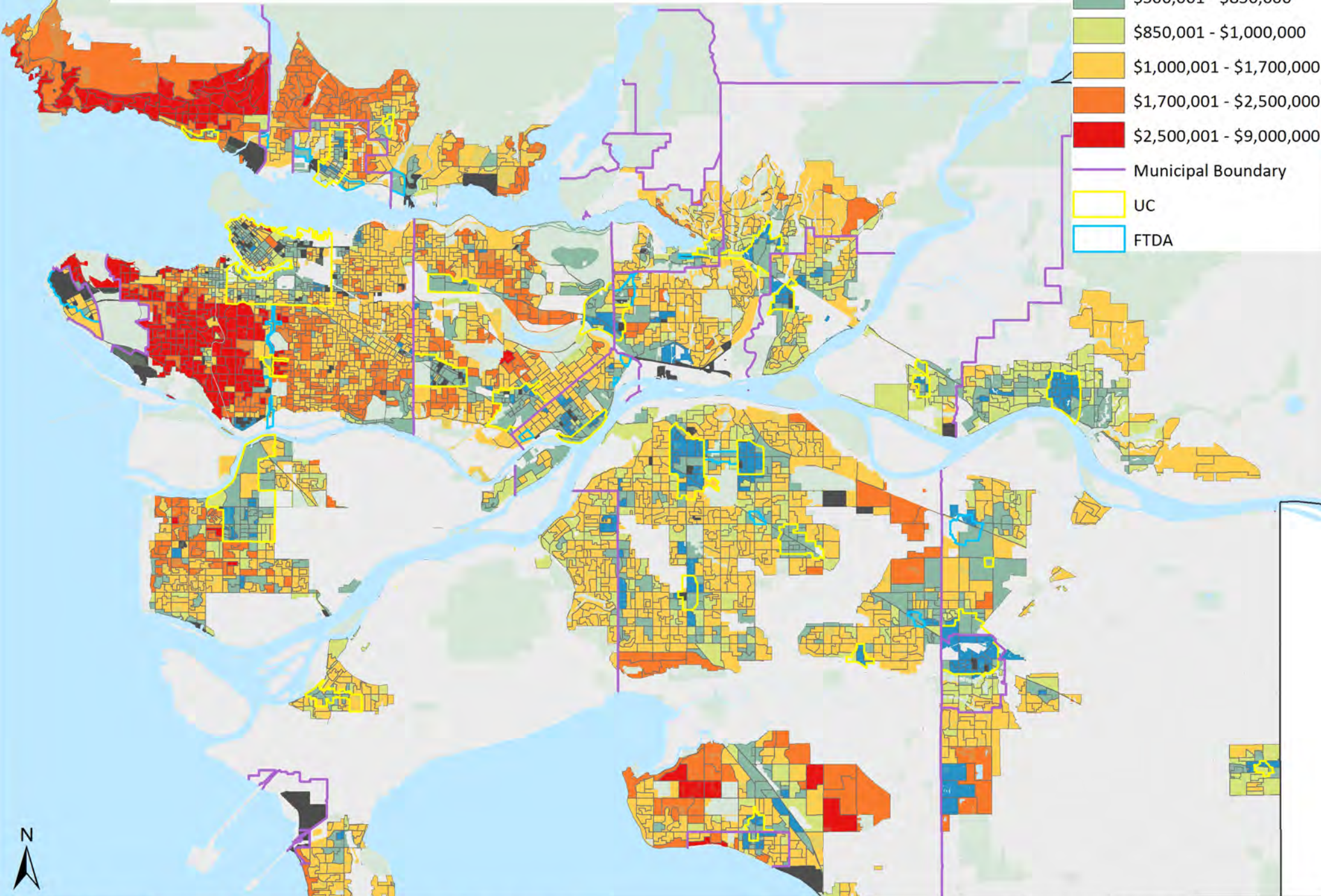
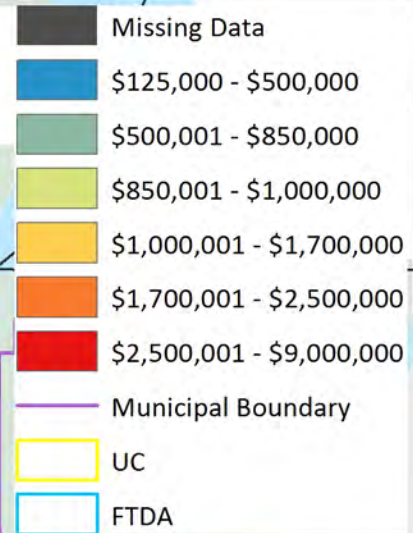
Percentage of private households occupied by owners (some member of the household owns the dwelling even if it is not fully paid for).





# Median Home Value

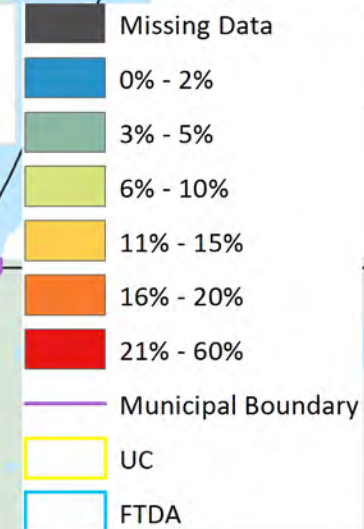
Refers to the dollar amount expected by the owner if the assest were to be sold.





# Housing Suitability (Overcrowding)

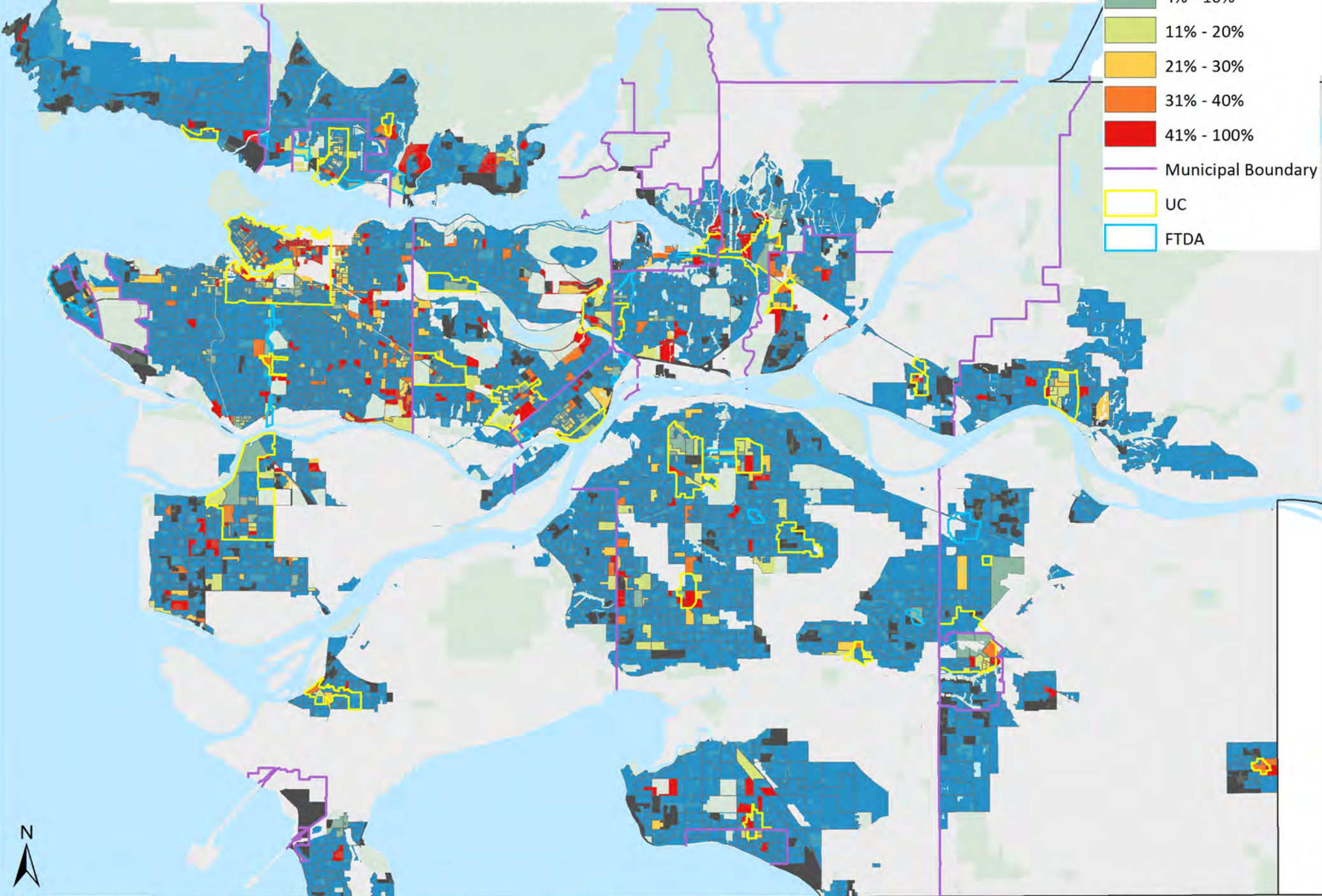
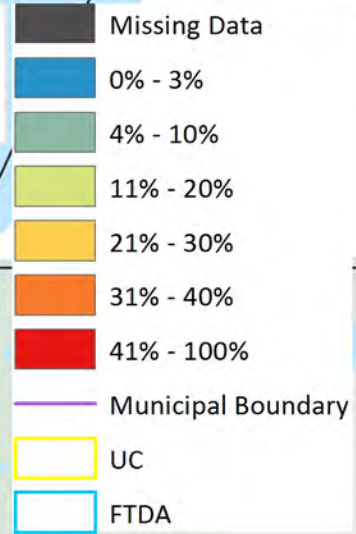
Percentage of households reporting accommodations with an insufficient number of bedrooms to accommodate the household, according to the National Occupancy Standard (NOC).





## Subsidized Housing

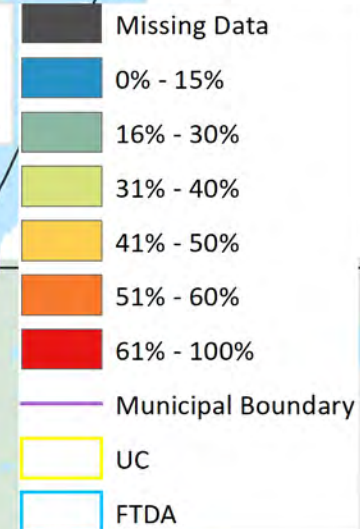
Percentage of tenant households living in a dwelling that is subsidized. Subsidized housing includes rent geared to income, social housing, public housing, government-assisted housing, non-profit housing, rent supplements and housing allowances.





# No Post-secondary Education

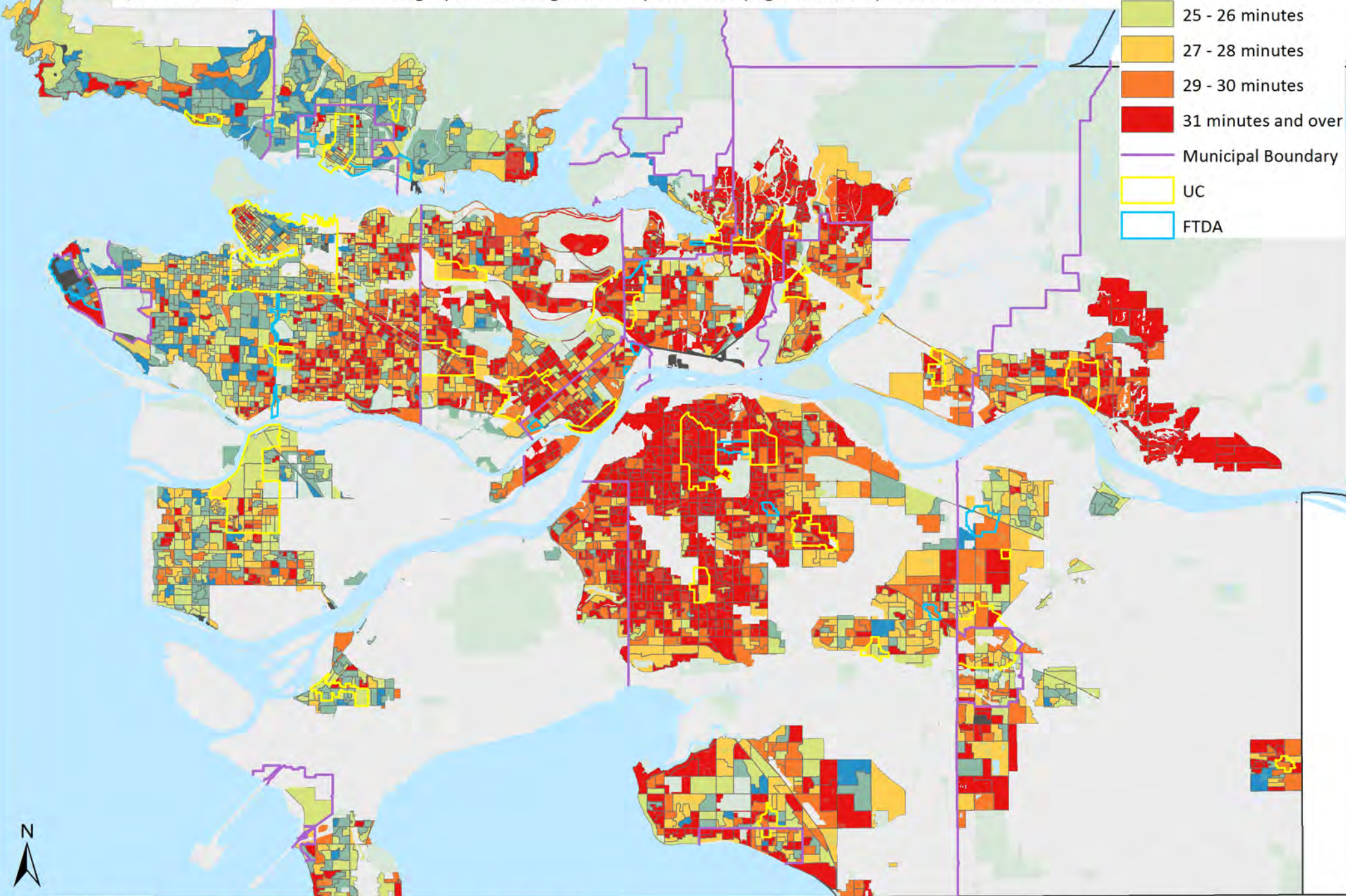
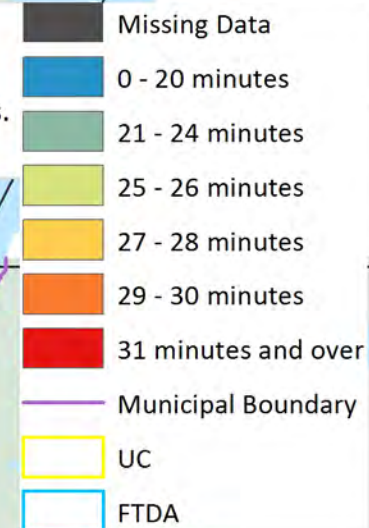
Percentage of population in private households and aged from 25 to 64 without a post-secondary certificate, diploma or degree (i.e. no diploma, certificate, or degree, or with a high school diploma).





## Average Commute Time (in minutes)

Calculated based on commuting durations (refers to the length of time, usually required by a person to travel to their work) by time ranges (e.g. less than 15 minutes). The number of respondents for each category is normalized by the total number of respondents. Each category is then assigned a midpoint value (e.g. 7.5 minute) to calculate the mean.





## Long Term Residency (Mobility Status)

Proportion of non-movers to total population in private households. Non-movers are persons that lived in the same residence on Census Day as they did 5 years before.

