

# SEYMOUR RIVER CANYON TRAIL CONNECTIONS PROJECT

We are working to ensure the network of trails in the Lower Seymour Conservation Reserve (LSCR) continue to be safe and accessible for recreational users.

JUNE 2018

## Project Overview

The Lower Seymour Conservation Reserve (LSCR), which is located downstream from the Seymour Watershed, is managed by Metro Vancouver for its recreational, educational, and ecological values.

Metro Vancouver has been working collaboratively with the District of North Vancouver, consultants and the community to re-establish a bridge crossing and improve trail connections in the LSCR following a rockslide in the Seymour River Canyon in 2014 (see inside for information). As a result of this significant, natural event, the Twin Bridge that connects the Fisherman’s Trail across the Seymour River was removed and surrounding trails were closed for public safety. The Seymour River Canyon Trail Connections Project is expected to begin construction in summer 2017 and will include:

- Construction of a new pedestrian bridge near the former Twin Bridge across the Seymour River
- Construction of a new single-lane vehicular bridge for Metro Vancouver operations access at Riverside Drive
- Replacement of the staircase along Baden-Powell Trail near the north end of Riverside Drive
- Trail connection improvements to the new infrastructure

## New Pedestrian Bridge Across the Seymour River

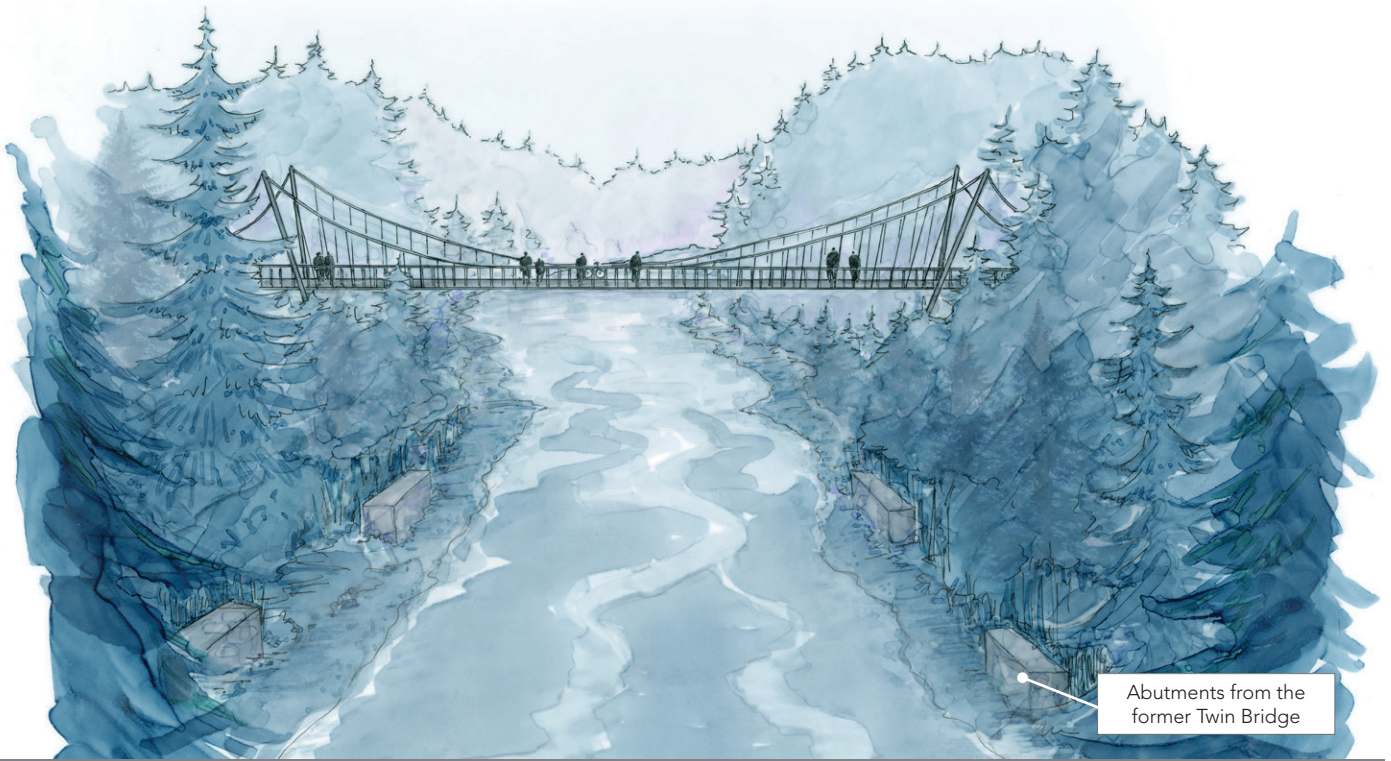
Metro Vancouver recognizes the recreational importance of the former Twin Bridge to the community and to trail users across the region. To ensure that access is restored, Metro Vancouver will be constructing a new pedestrian bridge across the Seymour River to re-establish the east-west connection of Fisherman’s Trail.

The new bridge will be constructed in the same general area where the former bridge was located, however, it will be significantly longer and higher.

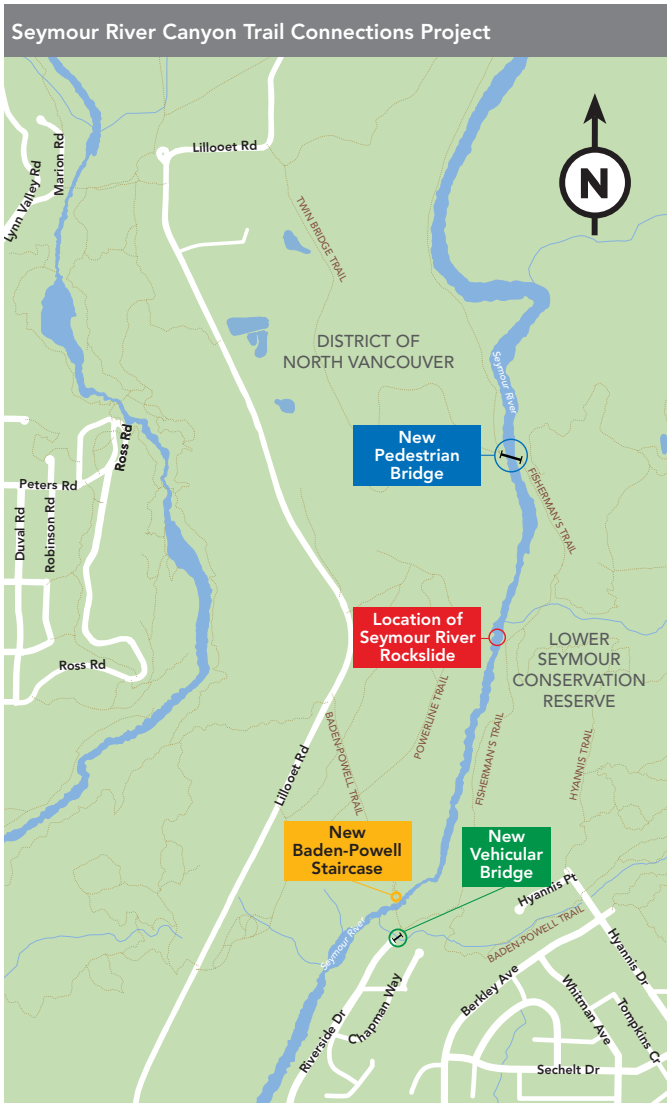
When complete the new bridge will accommodate various motor-less traffic such as hikers, cyclists, and dog walkers.



Artist's rendering at the entrance of the new pedestrian bridge across the Seymour River



Artist's rendering of the new pedestrian bridge across the Seymour River (view looking downstream)



In December 2014, a rockslide occurred in the Seymour River Canyon that partially blocked the Seymour River, increased the water level upstream, flooded area trails, and resulted in the removal of the Twin Bridge.



Photos of the Twin Bridge immediately after the rockslide and present day (after bridge removal)



Artist's rendering of the new single-lane vehicular bridge for Metro Vancouver operations access at Riverside Drive

## New Vehicular Bridge for Operations Access at Riverside Drive

To support water infrastructure and ongoing trail maintenance in the LSCR, a new bridge will be constructed at the north end of Riverside Drive. This single-lane bridge will be gated and locked and only Metro Vancouver and Emergency Services will have vehicle access.

The new operations access bridge will accommodate:

- Access for recreational trail users and Emergency Services
- Access for Metro Vancouver operations to regional water infrastructure and to support ongoing trail maintenance in the LSCR

## New Staircase on Baden-Powell Trail and Trail Connection Improvements

The new staircase near the north end of Riverside Drive will be wider and non-slip, to provide trail users with safer and more convenient access to connecting trails in the LSCR.

Metro Vancouver will also be upgrading existing trails and establishing new trail connections to the bridges. This will ensure that trail networks continue to be safe and accessible while addressing the interests and needs of the community.



Existing staircase to Baden-Powell Trail at the north end of Riverside Drive

## 2015 and 2016 Activities

Following the 2014 rockslide, Metro Vancouver has taken steps to manage public safety, local recreation and mitigation works in the LSCR, including:

- Evaluation of access and bridge crossing options
- Assisted with rockslide mitigation work being undertaken by the Seymour Salmonid Society and partners to re-establish the safe passage of fish in the Seymour River
- Baden Powell trail reroute and upgrades to provide alternate access

## 2017 Pre-construction Activities

Metro Vancouver's pre-construction activities for this project include:

- Environmental and geotechnical assessment work
- Tree removal near the former Twin Bridge location and at Riverside Drive
- Site preparation and establishment of equipment access

## Working with the Community

In 2015 and 2016, Metro Vancouver hosted a series of public meetings with the local community to introduce the project and listen to user interests and concerns. The feedback collected was considered in planning the design and construction of the project.

We are committed to minimizing construction impacts and to providing project updates to the community as information becomes available. To stay informed and receive electronic updates, subscribe to our mailing list at [www.metrovancouver.org](http://www.metrovancouver.org) (search "trail connections").

## Project Updates

For additional information on this project, please visit [www.metrovancouver.org](http://www.metrovancouver.org) and search:

"Trail Connections"

## Protecting the Environment:

To ensure construction activities do not impact the environment, the contractor and crews will:

- Meet all environmental regulations set out by local, Provincial, and Federal governments
- Use newer, low-emission construction equipment
- Fully restore all impacted areas

## Anticipated Construction Schedule: Spring and Summer 2018

Activity	Estimated Duration
Pedestrian bridge across Seymour River	3 months
Vehicular bridge at Riverside Drive*	2 months
Baden-Powell staircase replacement	1 month
Trail connection improvements and landscaping	3 months

\*Pending environmental permit approvals

## Contacting Metro Vancouver

**Metro Vancouver Information Centre:** 604-432-6200  
(Monday to Friday from 8 AM to 4:30 PM)

**After Hours Emergency:** 604-451-6610

**Email:** [icentre@metrovancouver.org](mailto:icentre@metrovancouver.org)  
(Please include "Trail Connections" in the subject line)