

Regional Parks Annual Report

2025



About Metro Vancouver

Metro Vancouver is a diverse organization that plans for and delivers regional utility services, including water, sewers and wastewater treatment, and solid waste management. It also regulates air quality, plans for urban growth, manages a regional parks system, provides affordable housing, and serves as a regional federation. The organization is a federation of 21 municipalities, one electoral area, and one treaty First Nation located in the region of the same name. The organization is made up of four separate legal entities, each governed by its own Board of Directors. Board directors are elected officials from member jurisdictions.

Territorial Acknowledgment

Metro Vancouver acknowledges that the region's residents live, work, and learn on the shared territories of many Indigenous Peoples, including 10 local First Nations: q̓íćə́y (Katzie), q̓ʷɑ:ńłəń (Kwantlen), kʷíkʷəłəm (Kwikwetlem), máthxwi (Matsqui), xʷməθkʷəyám (Musqueam), q̓íqéyt (Qayqayt), Semiahmoo, Sk̓wx̓wú7mesh Úxwumixw (Squamish), scəwáθən məsteyəxʷ (Tsawwassen), and sə́lilwə́təł (Tsleil-Waututh).

Regional Parks Committee Members 2025

John McEwen (Chair) – Village of Anmore

Andrew Leonard – Bowen Island Municipality

Rebecca Bligh (Vice Chair) – City of Vancouver

Lisa Muri – District of North Vancouver

Pietro Calendino – City of Burnaby

Darrell Penner – City of Port Coquitlam

Tracy Elke – City of Pitt Meadows

Jamie Ross – Village of Belcarra

Steve Ferguson – Township of Langley

Rob Stutt – City of Surrey

Craig Hodge – City of Coquitlam

Jenny Tan – City of Maple Ridge

Dylan Kruger – City of Delta

Sharon Thompson – District of West Vancouver

Meghan Lahti – City of Port Moody

Chak Au – City of Richmond

Cover image: Widgeon Marsh Regional Park



A Message from the Regional Parks Committee Chair

It was an honour to continue serving as Chair of the Regional Parks Committee throughout 2025. Metro Vancouver remains dedicated to protecting regionally significant natural areas and ensuring that residents and visitors can meaningfully connect with these special places.

In 2025, an estimated 14.7 million visitors explored our regional parks, reinforcing just how essential access to nature is for the health and well-being of our communities. Our work this year continued to support and deepen this vital relationship between people and nature.

One of the year's most significant milestones was the opening of Widgeon Marsh Regional Park following more than a decade of careful planning and design. The park protects 620 hectares of forested slopes, meadows, wetlands, and open space in Northeast Coquitlam and Electoral Area A. Metro Vancouver continues to work closely with First Nations on the park's ongoing development, including infrastructure improvements and ecological protection.

We celebrated the completion of the Davies Orchard Revitalization Project at Crippen Regional Park, restoring historic cabins, enhancing visitor amenities, and revitalizing the iconic landscape to support long-term recreational use.

Public engagement continued to be a central focus. Over 46,800 participants took part in 606 programs, events, and outreach activities, helping to build environmental awareness and stewardship, especially among children and youth. The contribution of volunteers remained invaluable. A total of 6,462 volunteers dedicated 20,392 hours to stewardship, education, and interpretive programs, strengthening community involvement and environmental leadership.

We continued growing the system through our land acquisition program, adding 3.5 hectares in partnership with local municipalities and other organizations. These efforts ensure that more natural areas are protected for future generations.

Underlying these achievements is the dedication of our staff, who work year-round in all weather conditions to maintain the safe operation and ecological health of the regional parks system. Their dedication keeps our parks resilient and welcoming for millions of visitors each year.

I am deeply proud of the dedication shown by the Metro Vancouver Board, the Regional Parks Committee, our staff, and our many partners. Together, we make the region stronger as we continue to ensure that Metro Vancouver's regional parks remain world-class natural spaces for generations to come.

A handwritten signature in black ink, appearing to read 'John McEwen'. The signature is fluid and stylized, with a long horizontal stroke extending to the right.

John McEwen
Chair, Regional Parks Committee

2025 in Review

In 2025, we continued to protect natural areas and connect people to nature, progressing towards the vision of a resilient network of regional parks and greenways that continues to provide important climate, health, and other benefits to park visitors and the wider region.

The *Regional Parks Plan* drives our work. Key accomplishments in 2025 helped support the priority areas of work within five goals:



1. The region's important natural areas are protected in perpetuity

- Completed the multi-year restoration of Imperial Trail in Pacific Spirit Regional Park
- Renewed the lease for Burnaby Lake Regional Park with City of Burnaby
- Removed over 26,000 kilograms of invasive species – a 40% increase from 2024



2. Everyone has the opportunity to benefit from exceptional experiences in nature

- Provided over 2,300 participants with an exceptional nature experience watching the Perseids meteor shower in Aldergrove Regional Park
- Continued to connect new audiences to regional parks with English Language Learners walks and a new Camping for Beginners event
- Engaged over 46,800 participants through Regional Parks public programs and events



3. Regional parks are sustainably managed and well-maintained for the safety of visitors and integrity of ecosystems

- Completed the public opening of Widgeon Marsh Regional Park
- Completed construction of three kilometres of regional greenway in Campbell Valley Regional Park
- Worked closely with səlilwətał (Tsleil-Waututh Nation) to complete planning and design of the təmtəmíx'tən/Belcarra South Picnic Area redevelopment



4. First Nations have an active role in the planning and stewardship of regional parks

- Staff collaborated with First Nations to incorporate Traditional Knowledge into park programming



5. Regional parks adapt to change and contribute to regional resilience

- Completed the Natural Asset Management pilot project at Campbell Valley Regional Park
- Completed the second phase of stream modelling using LiDAR-derived data to support evidence-based planning and environmental management across the system
- Participated in multi-agency wildfire training exercises held across the region

Our Role

Protecting Metro Vancouver's important natural areas and connecting people with them.

Vision

Regional parks are protected and resilient, connecting people to nature, with benefits for all.

Minnehada Regional Park

Guiding Principles

Nature-focused

Nature has inherent value and its protection for future generations is the foundation of what we do.

Interconnected

Our work nurtures the essential connection between people and nature, recognizing the vital role nature plays in human health and well-being.

Inclusive

Equity is integral to what we do, as we create an inclusive environment for all.

Reconciliation-focused

Relationships with Indigenous peoples are strengthened as we make the journey together along the pathway of truth and reconciliation.

Collaborative

By working with others, we collectively care for the land to improve the region's livability and ecological health.

Knowledge-based

Decision-making is informed by data and science, and incorporates Indigenous Knowledge. We learn from others and share our knowledge generously.

Adaptive

We sustain a culture of adaptive management, through learning, innovation, and evaluation.



Learning from First Nations

Recognizing that advancing truth and reconciliation with Indigenous peoples is a process that starts with listening and learning together, Metro Vancouver is committed to strengthening relationships with First Nations based on trust and working collaboratively towards shared goals.



Learning about Indigenous Tools and Traditional Knowledge

Throughout the spring and summer, Campbell Valley Nature House visitors had the opportunity to learn from q̓ʷɑ:n̓l̓ən̓ (Kwantlen First Nation) Elder Karen Gabriel about Indigenous tools used from past to present, traditional uses of plants, and how to identify wildlife by their scat and tracks. Interpretation staff are currently working with Elder Karen to record her Indigenous plant knowledge for a self-guided Campbell Valley Regional Park trail walk.

Elder Karen Gabriel, q̓ʷɑ:n̓l̓ən̓ (Kwantlen First Nation)



Growing the System

Regional parks play a crucial role in making Metro Vancouver a resilient region. [Regional Parks Land Acquisition 2050](#)* is a key strategy for contributing to regional livability by protecting regionally important natural areas. Metro Vancouver advances delivery of the strategy each year in collaboration with member jurisdictions, senior levels of government, and others.

In 2025, 3.5 hectares of parkland were acquired to expand Kanaka Creek and Widgeon Marsh regional parks.

* Adopted by the Metro Vancouver Regional District Board in 2018.

Kanaka Creek Regional Park



Metro Vancouver Regional Parks & Greenspace



Community Involvement

Strong community partnerships continue to be essential in engaging the diverse populations that make up our region. Throughout the history of the Regional Parks system, residents have consistently shown a desire to contribute in meaningful and lasting ways beyond just experiencing parks as visitors.

In 2025, we strengthened our collaboration with community partner organizations by:

- Advancing system-wide consistency
- Expanding the Park Partner Network
- Building internal capacity to support volunteerism and stewardship

These efforts help create a more connected, engaged, and resilient network of supporters who play a vital role in caring for regional parks.

Park Associations

The following non-profit groups received contribution funding from Metro Vancouver and partnered with Regional Parks on projects and activities ranging from habitat restoration to nature education.

1. Burnaby Lake Park Association
2. Derby Reach/Brae Island Parks Association
3. Kanaka Education and Environmental Partnership Society
4. Lower Coquitlam River Nature Association
5. Minnehada Park Association
6. Pacific Spirit Park Society



CTS Youth Society

Connect | Teach | Sustain

Metro Vancouver continued its funding support of the CTS Youth Society, a non-profit organization that aims to connect every youth in Metro Vancouver with their natural environment, their community, and with each other through the life-changing outdoor experience of summer camp.

To find out more about the CTS Youth Society, go to ctsyouthsociety.com.



Metro Vancouver Regional Parks Foundation

Metro Vancouver Regional Parks Foundation is a registered charity dedicated to raising funds for and supporting Metro Vancouver Regional Parks.

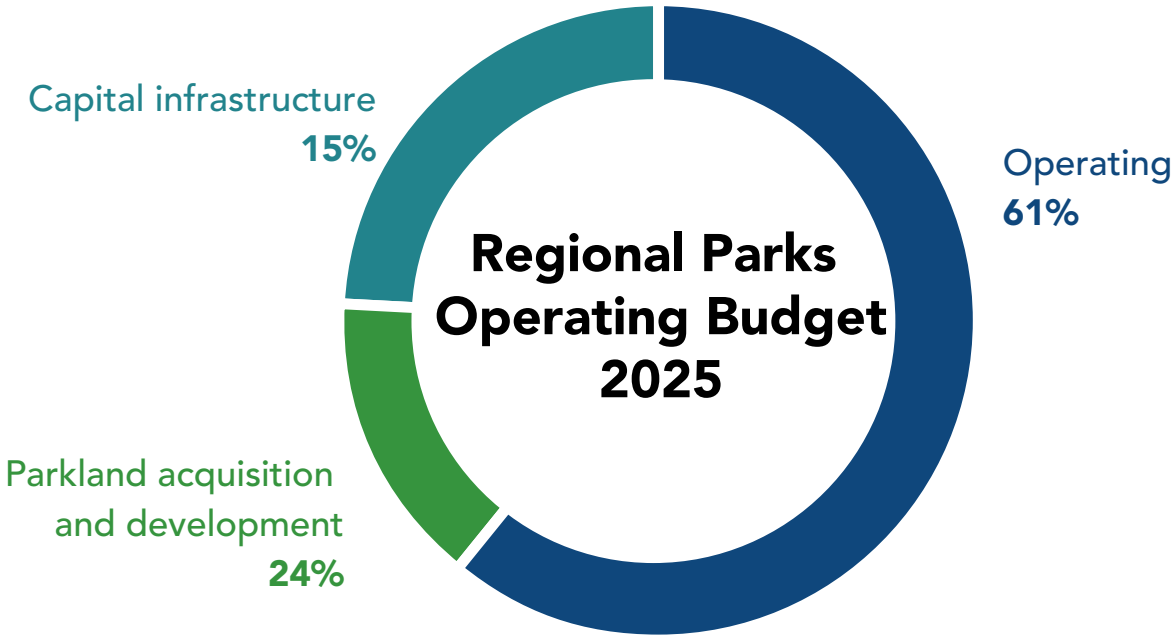
The Foundation funds projects that restore the health and beauty of these special places, improve the habitats of at-risk and endangered species, and support volunteer environmental stewardship events in regional parks. By filling in the gaps of public funding and helping more people visit regional parks, the foundation promotes the mental and physical health of people and community resilience, while ensuring regional parks remain spectacular.

To find out more about Metro Vancouver Regional Parks Foundation, its projects, and how you can give back to regional parks, go to mvrpfoundation.ca.

To discover more about the impact the foundation made in 2025, refer to their [2025 Annual Report](#).

Regional Parks Provide Significant Value

Regional Parks is primarily funded through the annual Metro Vancouver Regional District tax requisition. This core revenue source is supplemented by modest income from user fees, capital reserves, and occasionally, sustainability reserve funds and external revenues, such as federal or provincial grants.



Planning for Parks Today and Into the Future

We support the long-term development and management of regional parks and greenways by conducting original research and preparing plans and policies. Regional Parks policies support day-to-day decision making while system and park-level plans describe a long-term vision for the regional parks system and guide resource management, development, operations, and programming.

Regional Parks Plan:

The [Regional Parks Plan](#) is Metro Vancouver's management plan for the regional parks system. The plan guides Metro Vancouver's work to protect natural areas and connect people to nature. The plan establishes a strategic vision of a resilient network of regional parks and greenways that provides important climate, health, and other benefits to visitors and regional residents.

2025 Accomplishments

- Implemented new field data collection workflows, enabling high accuracy field monitoring through advanced GPS equipment and ArcGIS Field Maps
- Completed the second phase of stream modelling using LiDAR-derived data to support evidence based planning and environmental management across the system
- Completed the second phase of the Visitor Use Management Strategy, including internal engagement and the development of strategy components
- Completed Natural Asset Management project Phase 4, including a pilot project at Campbell Valley Regional Park



Meteor Shower Watch event



Camping Opportunities Study

In 2025, the *Regional Parks Camping Opportunities Study* was completed. The aim of this study was to identify potential sites for new campgrounds within regional parks. The study identified three potential wilderness camping sites, 12 group camping sites, and four multi-type camping sites. Additionally, sites in two parks affected by major capital projects were identified for possible long-term consideration. Future work includes business and financial planning, and detailed site feasibility work to determine if Metro Vancouver should prioritize an expanded camping program.

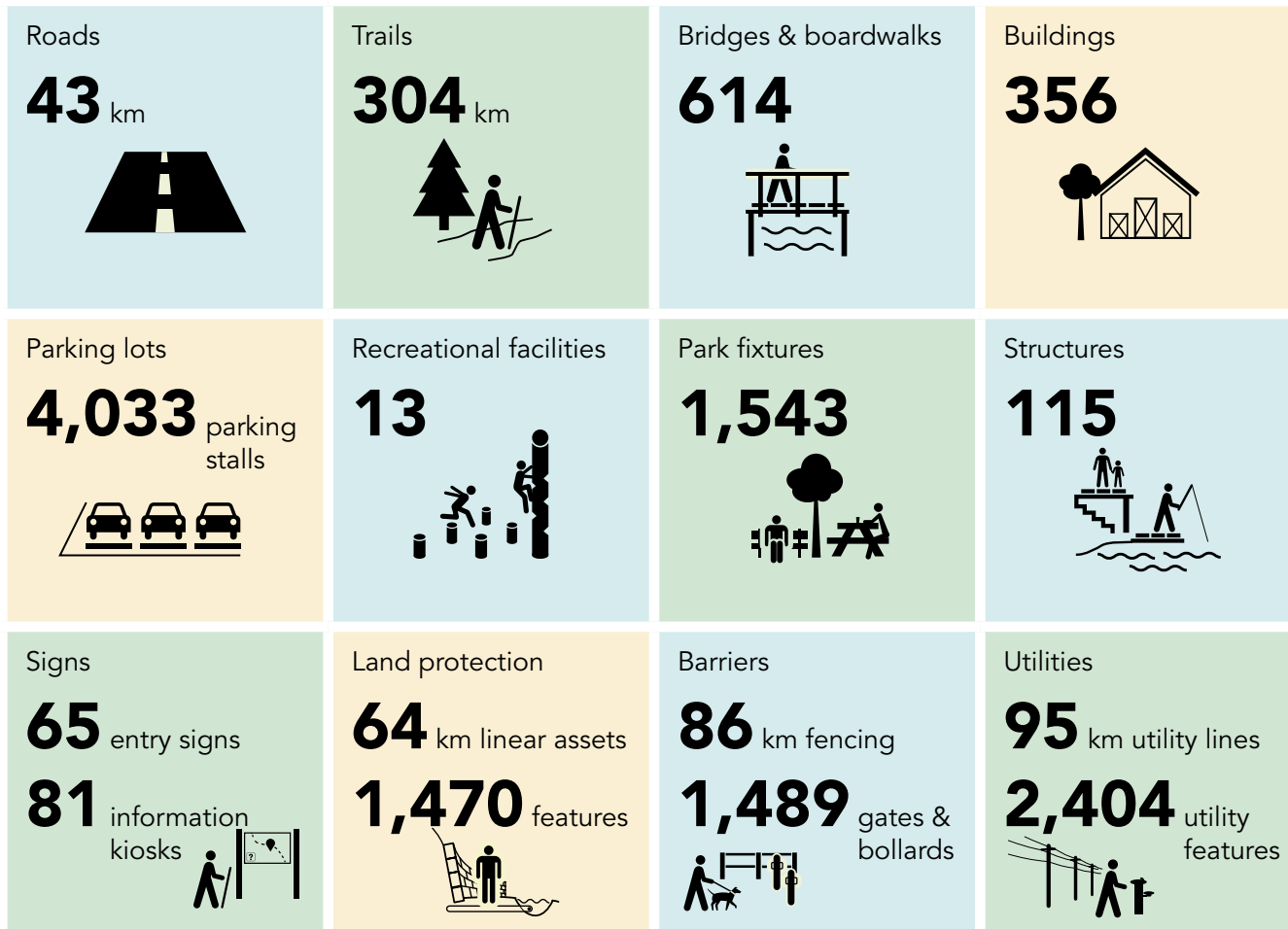




Watch this video about camping in regional parks (vimeo.com/1013347669)



Building and Maintaining Park Assets

Each year, we manage a growing number of built assets including:



-  Watch this video about boardwalk repairs at Boundary Bay Regional Park (vimeo.com/1115936659)
-  Watch this video about culvert clearing at Deas Island Regional Park (vimeo.com/1110165938)

2025 Accomplishments

1. Completed the Pine Ridge Bridge replacement in Kanaka Creek Regional Park
2. Completed the Davies Orchard revitalization project in Crippen Regional Park
3. Completed construction of three kilometres of regional greenway in Campbell Valley Regional Park
4. Worked closely with səilwətał (Tsleil-Waututh Nation) to complete planning and design of the təmtəmíx*ʔtən/Belcarra South Picnic Area redevelopment
5. Completed planning and design of the Delta Nature Reserve Boardwalk replacement



Watch this video about the bridge installation at Kanaka Creek Regional Park (vimeo.com/1142257669)



Widgeon Marsh Regional Park



Widgeon Marsh Regional Park Opening

Widgeon Marsh Regional Park—a remote, spectacular natural area—opened on November 1, 2025 for public access. This marked the first time the public was able to experience one of our region’s most ecologically significant natural areas. Widgeon Marsh is part of southwest BC’s largest freshwater wetland and provides habitat to a variety of wildlife, including bears, cougars, and coyotes. This opening reflects our commitment to protecting sensitive habitats while creating meaningful opportunities for people to connect with nature. Visitors booked free reservations to drive in or take the weekend shuttle bus. Once there, they had the opportunity for a six- to seven-kilometre round-trip walk to the marsh edge to admire sweeping mountain views, hike beside steep forested slopes, or picnic in a meadow surrounded by wilderness.



Watch this video about Widgeon Marsh Regional Park (vimeo.com/1172336031)



Protecting Important Natural Areas



In 2025, Regional Parks protected:

13,923 hectares – including **86%** sensitive and important modified ecosystems*

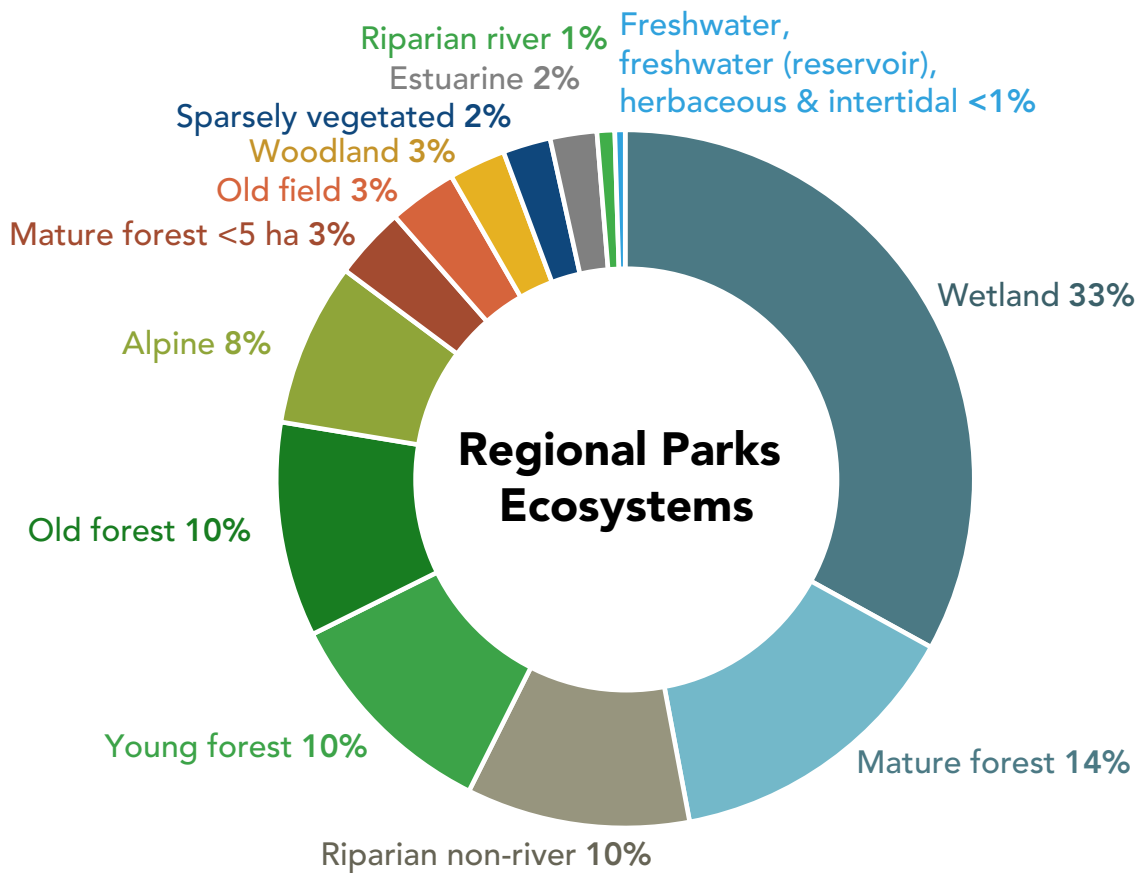
24 regional parks

5 regional greenways

2 regional park reserves

2 ecological conservancy areas

* Sensitive ecosystems are ecologically fragile, rare, or at-risk and include wetlands, older forests, and woodlands. Important modified ecosystems are younger and more human modified but still have ecological value and importance to biodiversity, such as young forests (under 80 years old).





Kanaka Creek Regional Park

Natural Resource Management

We work throughout the year to protect and conserve ecosystem health.

Goals of the Natural Resource Management Framework:

1. Ensure ecosystem health and long-term resiliency to conserve diverse biological communities and their associated habitats
2. Provide opportunities for public to connect with natural areas while conserving the integrity and resilience of ecosystems
3. Provide opportunities for public involvement in natural resource management through partnerships and stewardship activities

2025 Accomplishments

- Created/maintained 31.5 hectares of ecological restoration areas
- Conducted invasive plant treatments across nearly all regional parks
- Advanced 27 restoration projects in 20 regional parks and one regional greenway including:
 - Removing pine seedlings from the 2016 wildfire zone in Burns Bog Ecological Conservancy Area
 - Dune ecosystem planting and removing invasive species at Iona Beach Regional Park
 - Completing multi-year restoration of Imperial Trail in Pacific Spirit Regional Park
 - Renovating and planting the Round Field at Campbell Valley Regional Park: harrowing the entire field, reseeding 2.7 hectares with forage grasses, planting 0.3 hectares of selected areas with native trees and shrubs, and reseeding 0.3 hectares portion of the field with a native wildflower/grass mix
- Six projects supported by the Metro Vancouver Regional Parks Foundation



Managing Yellow Flag Iris at Widgeon Marsh Regional Park

In spring 2025, we launched a multi-year invasive species management initiative to control yellow flag iris at Widgeon Marsh Regional Park. Drone surveys identified over 22,000 plants capable of producing nearly two million seeds, making flowerhead removal a top priority to prevent further spread. Left unmanaged, this invasive species can degrade sensitive wetlands, block waterways, and outcompete culturally significant food plants.

Contractors, volunteers, and staff worked together using hand-held tools from canoes and by wading through nearly 90 hectares of marsh. The valuable insights gained will guide the next phase of this important project.



Watch this video about controlling the spread of yellow flag iris at Widgeon Marsh Regional Park (vimeo.com/1094527418)

Widgeon Marsh Regional Park



Parks Operations and Maintenance

Maintaining regional parks and their assets to the high standard expected by visitors requires significant planning and coordination. Even in the most challenging environmental conditions, we work diligently to ensure parks remain safe, welcoming, and accessible 365 days a year.



Grouse Mountain Regional Park

2025 Accomplishments

- Diverted over 90 tonnes of dog waste from the landfill
- Installed three automated external defibrillators (AEDs) along the BCMC Route at Grouse Mountain Regional Park, complementing the three AEDs installed on the Grouse Grind Trail in 2024
- Completed year two of a pilot program that allowed visitors to consume alcohol responsibly at designated areas in six regional parks
- Administered a five-day park officer training program to prepare and certify new seasonal Park Patrollers for future Park Officer roles, with 16 patrollers successfully completing the program.
- Participated in multi-agency wildfire training exercises held across the region, including the Coquitlam Watershed, Delta, Surrey, Langley, Bowen Island, and the North Shore



Regional Parks Bylaw Update

In 2025, staff completed a comprehensive review of the Regional Parks Regulation Bylaw, which establishes the rules and regulations for managing and enforcing activities on property in regional parks. This review provided an opportunity to clarify ambiguous sections, update language, address current trends, and respond to new provincial legislation. The updated [Metro Vancouver Regional Parks Regulation Bylaw No. 1420](#) was adopted in April 2025. Key changes include a streamlined format, new provisions addressing electric micro-mobility devices such as e-bikes and e-scooters, and updated regulations related to temporary sheltering in regional parks.

Tynehead Regional Park



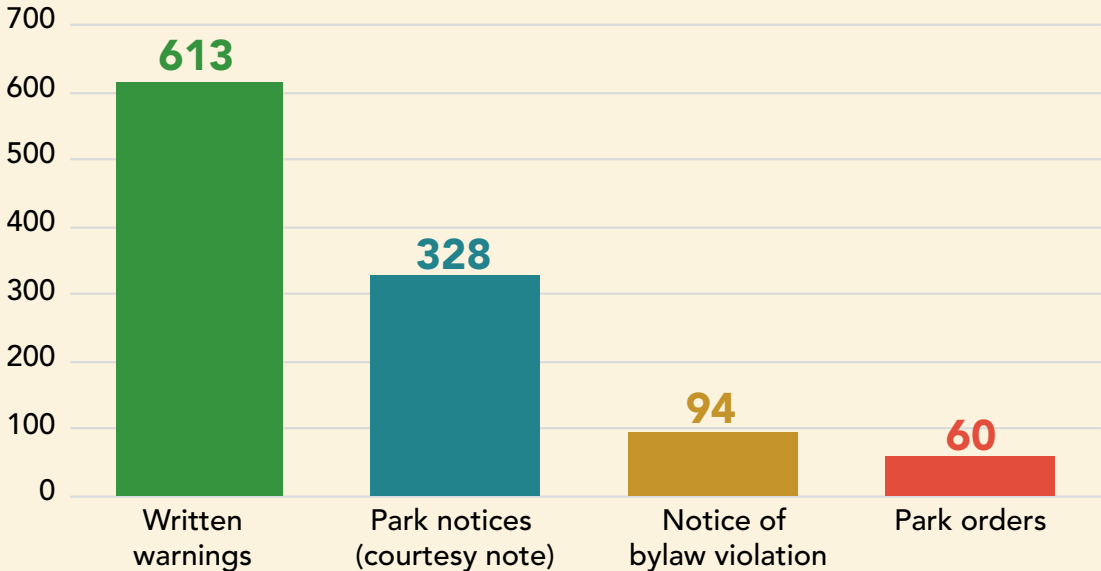
Supporting Safe and Enjoyable Park Experiences

Metro Vancouver protects and manages natural areas while providing safe and enjoyable outdoor experiences that connect people to nature. The Regulation and Compliance program supports this mandate by ensuring that park rules are understood and followed in a fair and consistent manner. Guided by the compliance continuum, the program emphasizes an education-first approach that encompasses a spectrum of tools and strategies to encourage voluntary compliance. We focus on educating visitors about expected behaviours that protect sensitive ecosystems, enhance public safety, and contribute to an enjoyable experience for all.

Through effective park design, proactive education, and enforcement as a last resort, we promote visitor safety by:

- Providing a uniformed presence in regional parks
- Educating park visitors on safe and expected use of regional parks
- Investigating and responding to public safety concerns and bylaw complaints
- Coordinating patrols and response from emergency teams
- Issuing Warnings, Park Orders, and Notice of Bylaw Violations when required

Regulation and Compliance Actions



Connecting People with Nature



Visits

14.7 million estimated park visits in 2025

(3.2% average annual increase from 2004 to 2025)

Two regional parks received a record number of visits

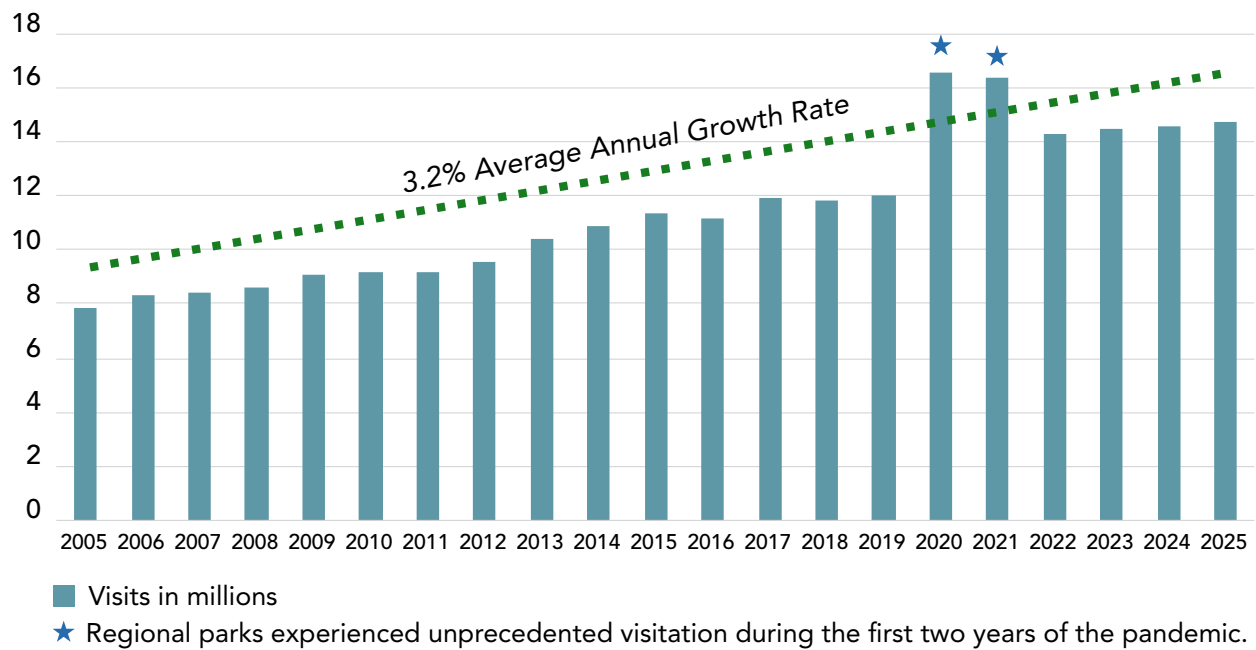
Location	2025 Visits	Change from 2024	Visitors in millions									
			0	.5	1	1.5	2	2.5	3	3.5	4	
łéxətəm Regional Park	386,900	-2%										
Aldergrove Regional Park	464,600	-0.2%										
Barnston Island Regional Park	11,500	10%										
təmtəmíxʷtən / Belcarra Regional Park	927,500	-6%										
Boundary Bay Regional Park	1,148,200	12%										
Brae Island Regional Park	227,900	-14%										
Brunette Fraser Regional Greenway	292,300	5%										
Burnaby Lake Regional Park	422,900	0%										
Campbell Valley Regional Park	887,600	-3%										
Capilano River Regional Park	1,097,000	-3%										
Crippen Regional Park	429,400	15% 🌟										
Deas Island Regional Park	362,800	2%										
Delta South Surrey Regional Greenway	63,200	-2%										
Derby Reach Regional Park	881,700	4%										
Glen Valley Regional Park	49,700	-5%										
Grouse Mountain Regional Park	545,300	10%										
Iona Beach Regional Park	287,900	11%										
Kanaka Creek Regional Park	528,000	-26%										
Lynn Headwaters Regional Park	578,400	53% 🌟										
Minnekhada Regional Park	188,900	9%										
Pacific Spirit Regional Park	3,888,800	-1%										
Pitt River Regional Greenway	229,700	8%										
Seymour River Regional Greenway	53,600	-10%										
Surrey Bend Regional Park	130,800	12%										
Tynehead Regional Park	604,600	9%										
TOTAL USE	14,689,200	1%										

🌟 Record annual visitation

Note: Visitation estimates are rounded to the nearest hundred in this figure. Data counters installed at park entrances (roads and trails) are used to produce annual and monthly visitation estimates for each park.



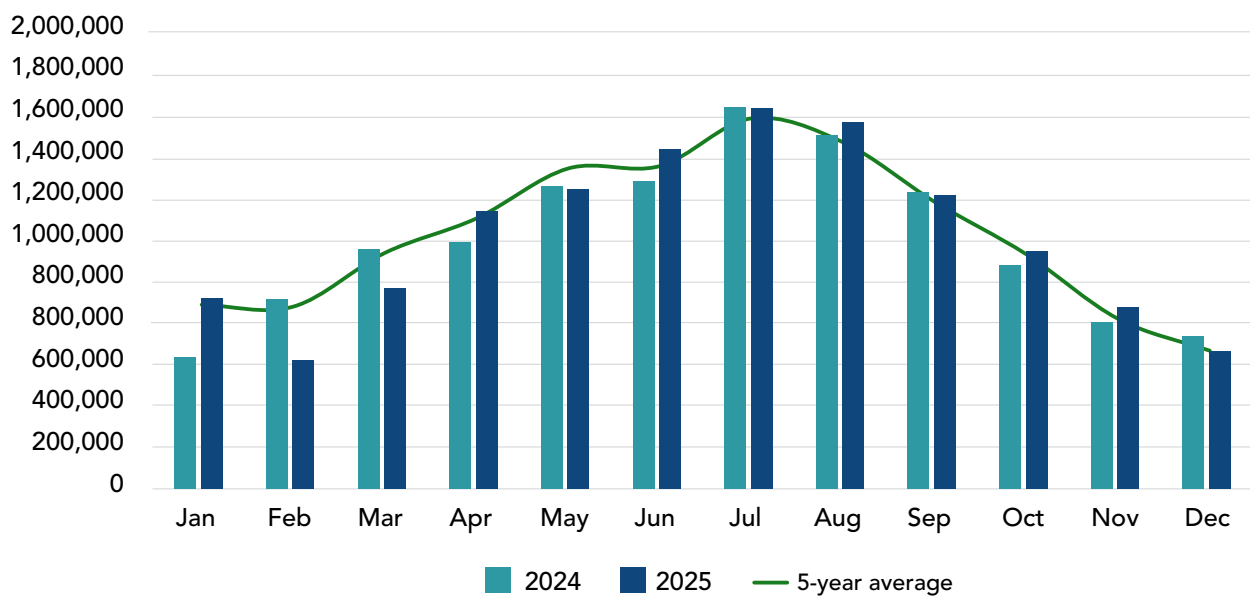
Annual Visits



Crippen Regional Park



Visits by Month



Public Programs and Events



46,802 total participants

11,276 group program participants

35,526 public program participants



606 total programs, events, and outreach activities

464 field trips and workshops

142 programs

Park interpretation enriches experiences in regional parks by revealing the stories, processes, and connections that shape the natural world. By deepening people's sense of place and appreciation, interpretation helps foster a lasting connection to regional parks.

Through engaging, experience-based programs, staff cultivate a culture of care and understanding for the region's diverse natural heritage. These encounters inspire people to value, respect, and help protect the ecosystems that define Metro Vancouver's regional parks.

2025 Accomplishments

- Delivered the popular Meteor Shower Watch event at Aldergrove Regional Park, attracting more than 2,300 participants for an evening of stargazing during the Perseids meteor shower. The event featured constellation talks, interactive exhibits from community partners, and a lantern-lit trail experience.
- Re-instituted the volunteer host program at Burnaby Lake Nature House, where twelve volunteers from the Burnaby Lake Park Association contributed 136 hours to connect 2,600 visitors to the site. Their support enabled park interpreters to address broader management issues, including bear activity and wildlife feeding concerns.
- Hosted Night Quest at Pacific Spirit Regional Park, which drew over 2,000 attendees for an immersive, lantern-lit evening forest experience. Visitors wandered a two-kilometre trail illuminated by glowing animal lanterns, met costumed forest characters sharing nature stories, and enjoyed drumming and a campfire.
- Implemented Forest Harmonies, a mid-summer musical celebration that transformed Pacific Spirit Regional Park into a living soundscape where nature and music intertwined. Over 700 participants strolled through rainforest trails at dusk, listened to local musicians, tried hands-on instruments, and explored interpretation stations highlighting forest “music makers” such as woodpeckers, wrens, and tree frogs.



Watch this video about the Meteor Shower Watch event at Aldergrove Regional Park (vimeo.com/1113743160)



Watch this video about the Forest Harmonies event at Pacific Spirit Regional Park (vimeo.com/1105630825)

Aldergrove Regional Park





Camping for Beginners

To expand inclusive programming and strengthen a sense of belonging in nature, we partnered with Power to Be, a registered charity dedicated to creating access to outdoor experiences for youth, adults, and families living with cognitive, physical, financial, and social barriers. Together, we delivered Camping for Beginners at Tynehead Regional Park, a program designed specifically for wheelchair users and adults with visual impairments. Participants learned essential outdoor skills, including how to set up a tent, pack the ten essentials, and cook a simple camp meal. The program also emphasized stewardship, with participants practicing Leave No Trace principles and learning how to interact safely with wildlife. Due to the strong positive response from participants, this program will continue in 2026.

Derby Reach Regional Park



What Our Participants Say

“We are so appreciative of the intention you put into considering our group’s needs. Your delivery was tailored in a way that made the learning engaging, authentic, and inclusive for everyone there. We were truly blown away by the quality of the program and the passion and expertise you brought to it. Thank you for such a fulsome experience.”

— Marin Puffer, Community Engagement and Education Lead, Power To Be
Salmon Rainforest program catered to visually impaired or wheelchair user adults, Tynehead Regional Park

“[The park interpreter] really modelled a personal connection to nature for my students, which is one of our goals to develop school-wide. Many of my students shared that it was the best field trip ever, and several told their parents at pickup that they wanted to go there as a family. I believe that this has set up our exploration of local animals and biodiversity perfectly for this term, and has inspired more of my students to explore the regional parks around Metro Vancouver.”

— Erica Bloom, Teacher, F.W. Howay Elementary, Pond Peeking program, Minnehada Regional Park

“One of my [student’s] parents said to me, ‘I will never look at this beach in the same way. I can’t wait to come and explore the beach with my other kids and their dad.’ All the kids had a wonderful time and could not believe the amount of learning that took place.”

— Leila Milonas, Teacher, Cliff Drive Elementary School, Seashore Sleuths program, Boundary Bay Regional Park

“This event warms my heart every year. It’s a delight for every member of our family and we thank you so much for the perfect mix of education, wonder, and outdoor adventure.”

— Night Quest event participant, Pacific Spirit Regional Park





Iona Beach Regional Park

Facilities and Visitor Use

We strive to support physical and mental health by providing facilities that allow the public access to nature. From picnic areas that support social connections, to trails that enable quiet contemplation, everyone should have the opportunity to experience the wide range of benefits that emerge from time spent in nature.

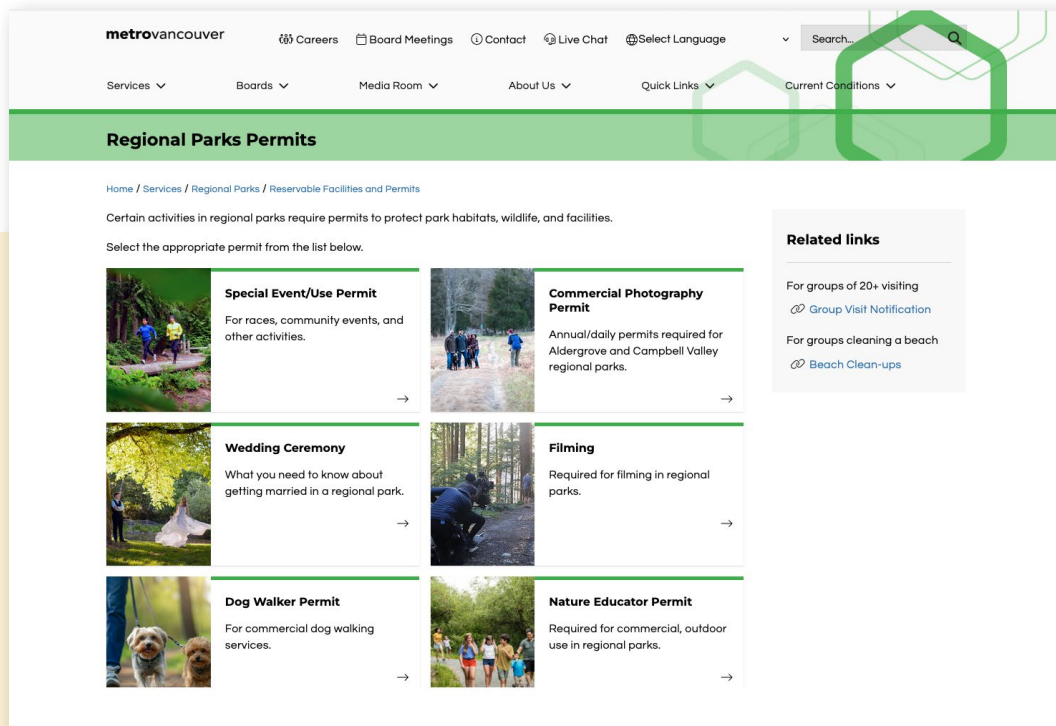
2025 Accomplishments

- Completed the final phase of picnic area improvements at Iona Beach Regional Park with a new shade sail and widened pathways
- Completed repairs to the Inverholme Schoolhouse at Deas Island Regional Park
- Expanded commercial dog walking permits at Pacific Spirit Regional Park by 33 per cent
- Implemented a commercial photography permit process for Campbell Valley and Aldergrove regional parks
- Launched a free reservation-based shuttle bus service to Widgeon Marsh Regional Park from the Lafarge Lake-Douglas SkyTrain station. This initiative enabled visitors to experience this ecologically sensitive park while reducing vehicle traffic and supporting sustainable visitation.



New Permit Web Page Portal

We launched a new Regional Parks permit web page that creates a streamlined, one-stop hub for all permit needs. The portal makes it easier for organizations to complete and submit applications, while providing staff with a centralized system to download, review, and manage permit information. By simplifying the workflow and reducing manual data handling, the new web page improves user experience, shortens processing times, and makes the permitting process more accessible and efficient.



Facility Reservations

Most regional parks have reservable facilities suitable for group picnics, camping, weddings, special events, meetings, filming, and workshops.



121,972 total visits* at camping facilities in six regional parks

106,360 visits at individual camping facilities in Derby Reach and Brae Island regional parks

125 unique groups had **15,612 visits** at outdoor and indoor camping facilities in four regional parks

təmtəmíxʷtən/Belcarra Regional Park





934 groups had **125,920** visits* at reservable buildings and facilities

589 unique groups with **33,881** guests visited picnic shelters in eight regional parks

345 unique groups had **92,039** visits at buildings and other booking opportunities in regional parks

* "Visits" are counted as "person days" (one person staying for two days counts as two "visits")



Volunteering



**21,068 total
volunteer hours**



**6,617 total
volunteer instances**

A volunteer instance is when one person volunteers once at an event or program.

Each year, volunteers invest time and effort to restore the health and beauty of regional parks. Volunteers contribute to the delivery of a range of programs and activities in regional parks including community science, educational activities, and other events in regional parks.

Derby Reach Regional Park



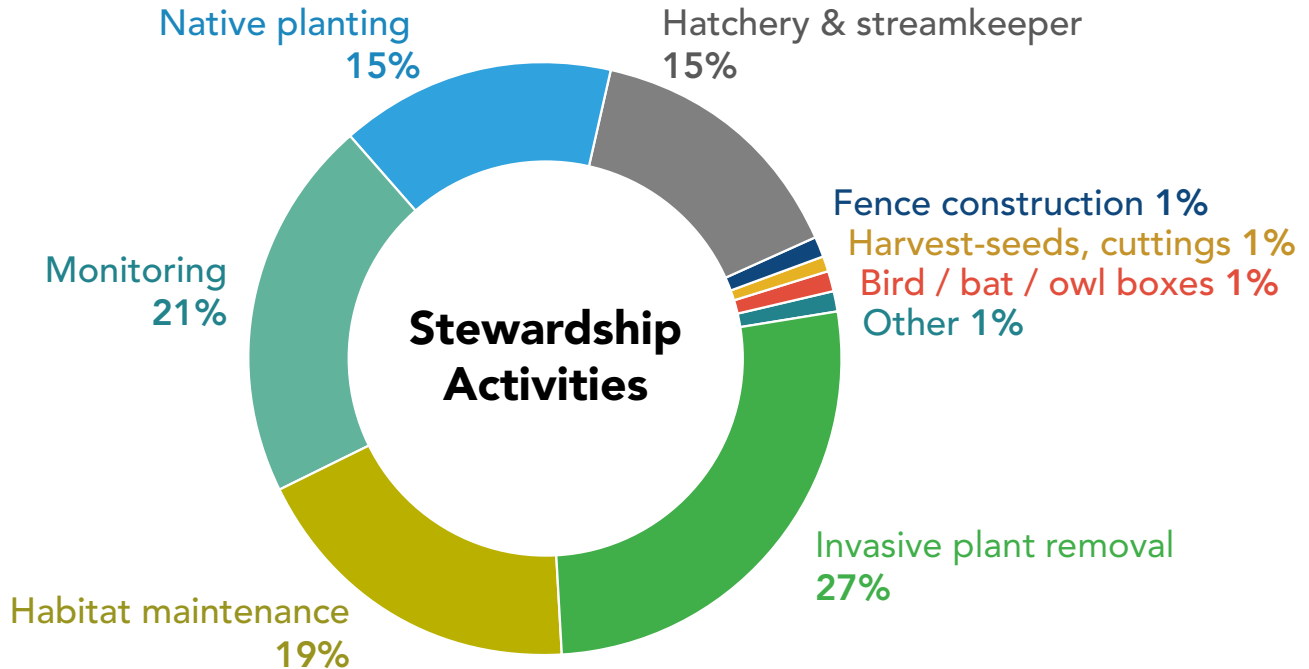


26,783 kg of invasive species removed

11,727 native plants added to regional parks

Environmental Stewardship

In 2025, 4,649 volunteer instances supported 412 environmental stewardship work parties in regional parks, contributing 14,299 volunteer hours.



Park Partners and Public Programs

Volunteers support the delivery of community science, educational activities, and other events in regional parks. In addition, volunteers contribute hours to strategic planning, program coordination, display development, fundraising, and board governance. In 2025, 1,968 volunteer instances contributed 6,769 volunteer hours.

Campbell Valley Regional Park



What Our Volunteers Say

“We had a great experience volunteering. It was rewarding to learn more about the environment around us while working hands-on to care for the park. It felt meaningful to contribute alongside others and see the difference we made in a few hours. The team left feeling inspired and eager to get involved again.”

— Samantha Maw, Mustang Survival

Kanaka Creek Regional Park



Getting the Word Out

Regional Parks Newsletter

This monthly e-newsletter features the latest Regional Parks programs and events.

6,424 subscribers

Nature Program Guide

Published in the spring, summer, and fall/winter.

Promotes events and activities for all ages to learn about, connect with, and enjoy nature in regional parks.

Distribution includes household mailouts, park kiosks, community centres, libraries, and city halls.

Over **6,000** people received each seasonal nature program guide by email.

24,933 hard copies of the nature program guide were distributed per edition, on average.



Social Media and Video

Regional Parks connects with people through social media, sharing information ranging from nature activities and volunteer opportunities to safety and land acquisition announcements. Social media is also a way for people to reach out to — and engage with — Regional Parks.

8 videos produced and shared

- 857 Regional Parks Facebook content interactions and link clicks (includes comments, shares, saves, link clicks, and follows)
- 395,807 video views (YouTube and Vimeo)

7 videos promoted on YouTube pre-roll

- 569,497 pre-roll views

Pre-rolls reach viewers right before they watch their desired content, offering a way to capture attention early. These videos play before the main video content starts.

11 videos shared on community channels

Metro Vancouver runs a monthly show on community channels. Delta Cable plays each episode six to 10 times a week and Novus about five times a week.



[FB.ME/MetroVancouverRegionalParks](https://fb.me/MetroVancouverRegionalParks)

14,966 Facebook engagements (includes reactions, comments, shares, saves, link clicks, and follows)



[@metrovancouverbc](https://www.instagram.com/metrovancouverbc)

1,887 interactions (likes, shares, comments on Regional Parks content)



In 2025, Metro Vancouver Regional Parks protected over 13,900 hectares of regionally important natural areas with 14.7 million visits to its regional parks.



metrovancouver
SERVICES AND SOLUTIONS FOR A LIVABLE REGION