



Help Shape the Future of Burnaby Lake Regional Park

Metro Vancouver is developing a 20-year management plan for Burnaby Lake Regional Park – and your input matters.

This plan will guide how we care for and improve the park for decades to come.

- **Protecting natural ecosystems**
- **Supporting safe and sustainable park access**
- **Improving aging infrastructure**
- **Balancing the needs of all park users**



We want to hear from you!

Scan the QR code to join our mailing list. You'll receive updates and learn about opportunities to get involved.

Regional Parks & Greenspace

Metro Vancouver operates 24 regional parks, five regional greenways, two ecological conservancy areas, and two regional park reserves. In 2024, Metro Vancouver Regional Parks protected over 13,900 hectares of regionally important natural areas with 14.5 million visits to its regional parks.



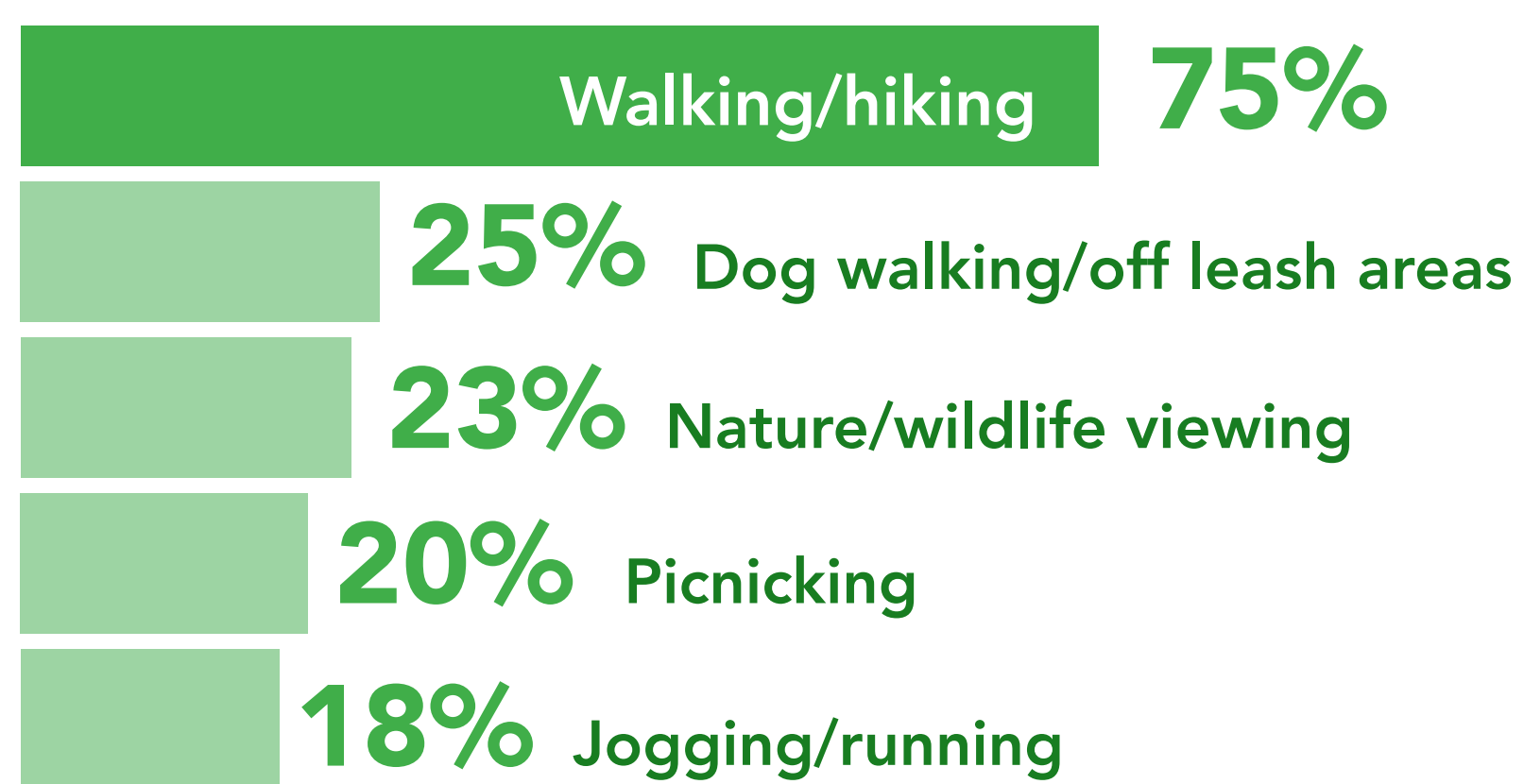
Metro Vancouver's Role

Protect Natural Areas + Connect People to Nature

Visits

Visits to regional parks have **increased by 3.2%** on average annually from 2004 to 2024.

Most Common Activities



Top 3 Reasons to Visit



from 2024 Regional Parks Visitor Survey

Regional Parks Amenities

Amenities vary by each regional park and tie to existing natural features.

Typical Amenities

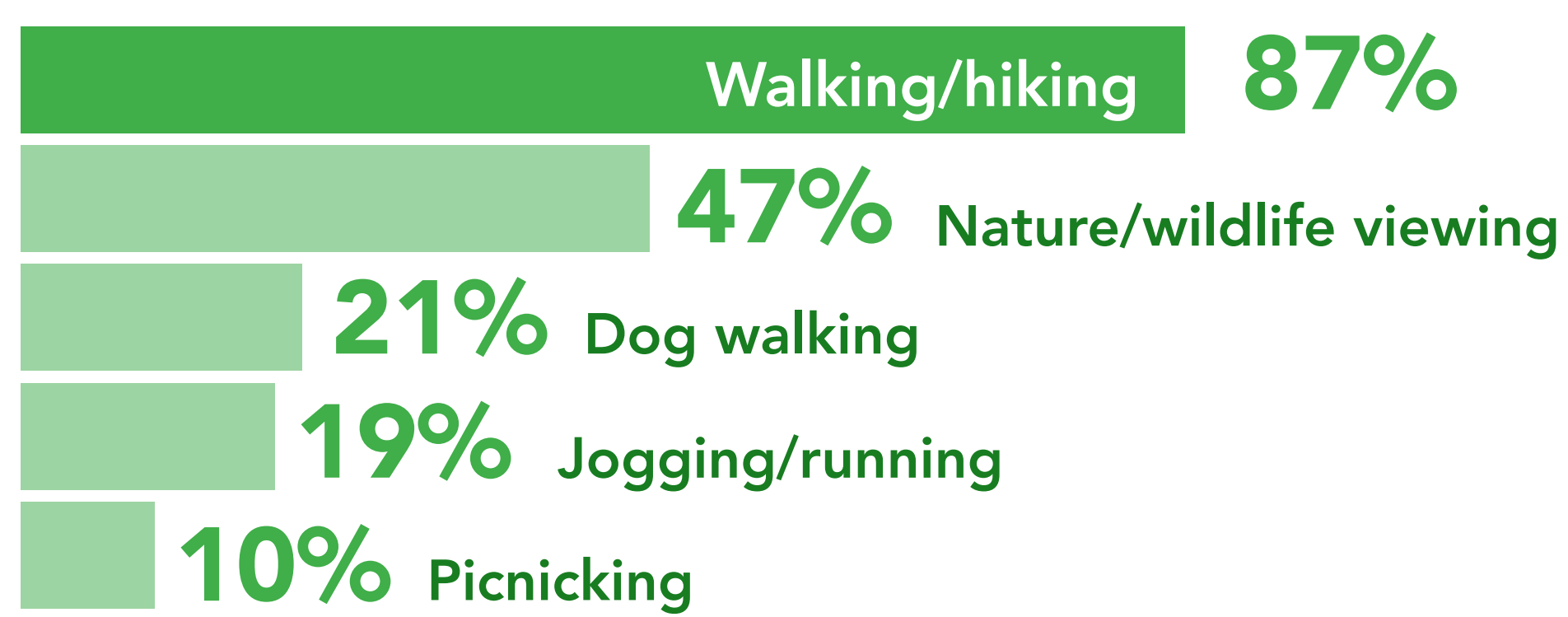
- Pedestrian trails
- Multi-use trails shared by pedestrians, cyclists and equestrians
- Picnic areas
- Group picnic shelters
- Group campsites
- Interpretive features and trails
- Nature centres
- Fishing access areas
- Non-motorized boat launches
- Viewpoints and viewing towers

Burnaby Lake Regional Park Today

Burnaby Lake Regional Park offers visitors a large, scenic natural area within the city for activities like walking, running, picnicking, and family outings, in addition to nature interpretation programs. The park features a 10km walking/hiking loop trail around the lake. It is also a birdwatching destination, providing key habitat for diverse bird species.



Top 5 Activities:



In 2024



Burnaby Lake Nature House

A place for hands-on learning since the 1970s, the Nature House continues to inspire awareness about the parks' plants and wildlife. It is open weekends and statutory holidays from mid-May through Labour Day. In 2024, 4200 people visited the Nature House.

The Park Offers:

- Pedestrian only trails
- Shared equestrian/pedestrian trails
- Shared equestrian pedestrian/cycling trails
- Nature House
- Viewing Tower
- Philipps Point viewpoint
- Piper Spit viewpoint
- 10-km loop trail around the lake
- Picnic area near Cariboo Dam



Biodiversity and Environmental Stewardship

Burnaby Lake Regional Park is well known for its bird watching opportunities. It is particularly important as a waterfowl nesting, staging, and overwintering area.



Habitat restoration and enhancement (e.g. removal of invasive plant species and replanting with native species) can be used to protect sensitive ecosystems and also to increase the value of some of the disturbed ecosystems.



Burnaby Lake provides key habitat for Western Painted Turtles, a threatened species in Canada, with a protected nesting beach created by Metro Vancouver and the Coastal Painted Turtle Project.



Community Partners in the Park

Burnaby Lake Park Association (BLPA) works with Metro Vancouver to protect Burnaby Lake Regional Park’s ecology. BLPA engages the public in nature through activities like invasive species removal, native species planting, and wildlife monitoring. This includes their “Weedbusters” program that was started in 2004. The BLPA works closely with Metro Vancouver Natural Resource Management staff to identify priority sites, along with appropriate timing and methodology.

Coastal Painted Turtle Project is led by the Coastal Partners in Conservation Society and began with a 2008 Ministry of Environment initiative to assess threatened Western Painted Turtle populations in coastal BC. It focuses on status assessments, nest monitoring, and habitat research to support species recovery.

CTS Youth Society connects Metro Vancouver youth with their natural environment, community, and each other through free, youth-led outdoor education, environmental stewardship, leadership, and public service programs.

Stream of Dreams is an eco-education program that engages schools and communities in watershed awareness through science-based learning and public art. It promotes water conservation, youth empowerment, and environmental stewardship.

Wildlife Rescue Association of BC operates its main wildlife hospital and rehabilitation center on the south shore of Burnaby Lake, treating over 5,000 injured and orphaned animals annually from across the region.



BLPA/Regional Parks “Ecoblitz” Event



CTS Youth Society Event

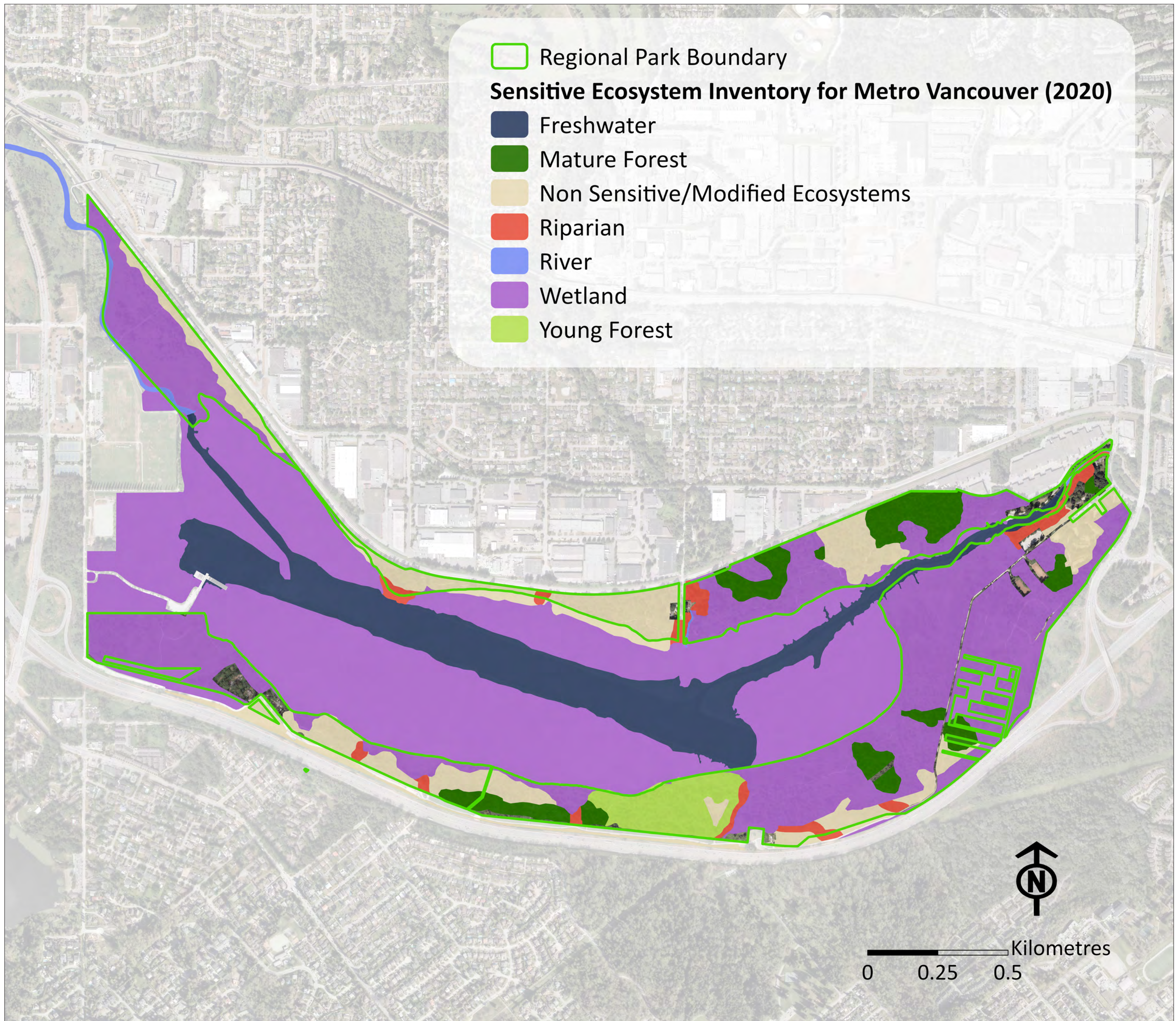


Regional Parks Restoration Event

Metro Vancouver Regional Parks works to ensure ecosystem health and long-term resiliency, to conserve diverse biological communities, and to provide opportunities for public involvement through partnerships and stewardship activities. Staff engage with park partners and other groups including academic institutions and members of the public in stewardship, research and monitoring programs in the park. Staff collect information and maintain databases for the park including invasive plant species and restoration areas.

Sensitive Ecosystems

Today, 80% of the 145-hectare-park is made up of sensitive and modified ecosystems*. The majority of this is wetland (purple on the map below). Water levels are kept consistent with a dam at the east end. Patches of mature forest, young forest, and riparian areas characterize the upland areas of the park.



* Sensitive ecosystem areas outside of current park boundary are not included in the calculation

