



# Proposed Regional Park at Cape Roger Curtis

Draft Concept and Program  
June 2023



# Executive Summary

The draft park concept, program and guiding principles have been developed based on research, inventory, analysis, and engagement with First Nations, the public, stakeholders, and government agencies during phase one of the park planning process.

The draft park concept, program and guiding principles illustrate key values and a foundational park program, including environmental protection, restoration, and opportunities for day and over-night uses.

Phase two engagement will seek feedback on the draft park concept, program and guiding principles and share information from technical studies on traffic and access, phasing, visitor management, and emergency planning. Metro Vancouver is engaging First Nations to explore opportunities to work collaboratively to incorporate traditional and current knowledge into the park's concept and long-term management.

# First Nations Acknowledgement

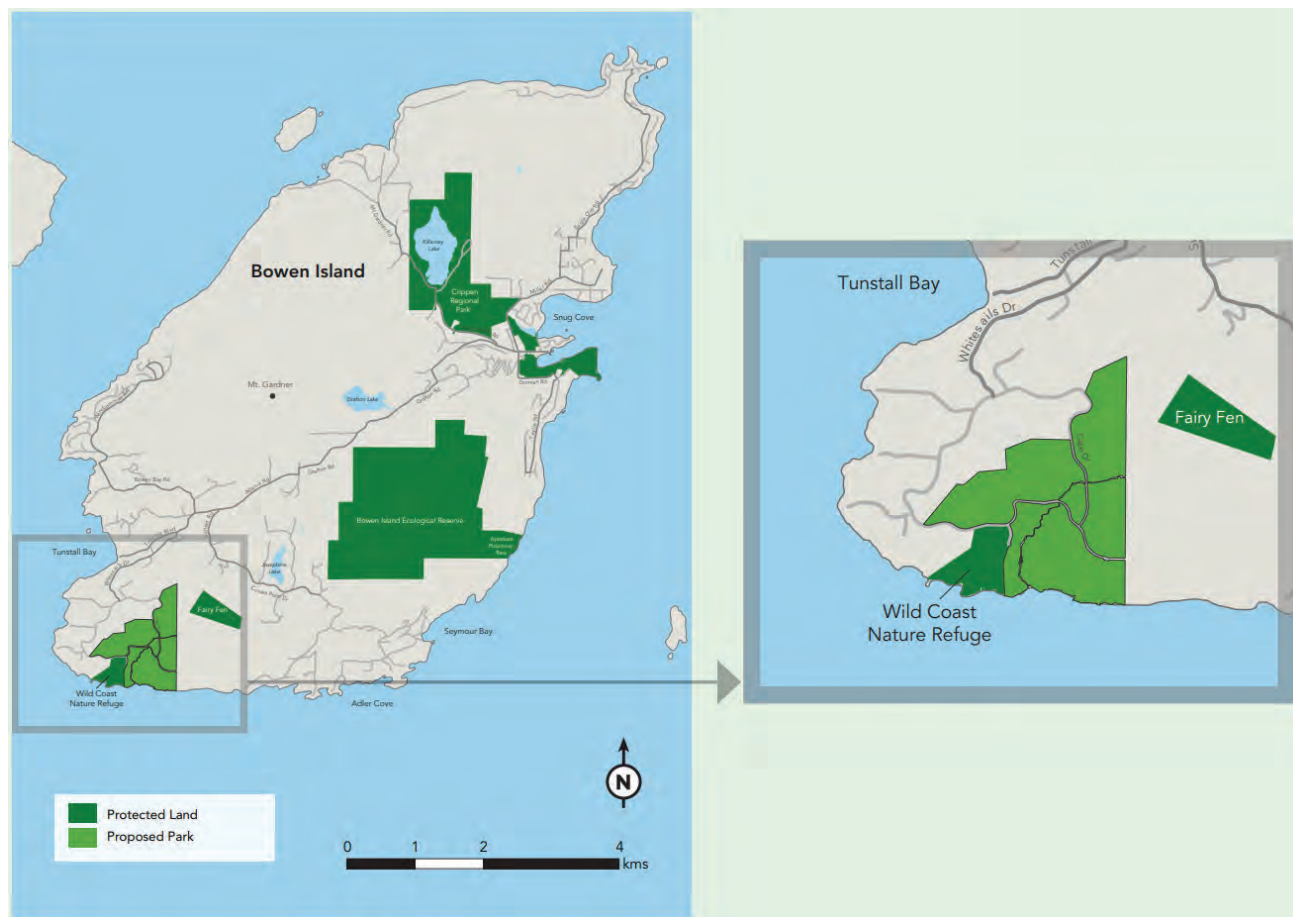
The proposed regional park at Cape Roger Curtis on Bowen Island is within the territories of the Skwxwú7mesh Úxwumixw/Squamish Nation, xʷməθkʷəyəm/Musqueam Indian Band and səlíl-wətaʔ/Tsleil-Waututh Nation. We respectfully acknowledge the significance of Bowen Island and the Howe Sound for all three Nations, particularly the Skwxwú7mesh Úxwumixw/ Squamish Nation.

The proposed regional park presents an opportunity to advance collaboration and reconciliation with First Nations. Metro Vancouver is engaging local First Nations to explore opportunities to work collaboratively on this project over the long term.

# Context

In May 2023, Metro Vancouver finalized the purchase of 24 parcels of land at Cape Roger Curtis on Bowen Island for the purpose of establishing a new regional park. The proposed park preserves a large area of ecologically important and sensitive dry coastal bluff ecosystem and provides opportunities for residents of the region and the Bowen Island community to connect with nature.

Metro Vancouver initiated the park planning process for the proposed park at Cape Roger Curtis in January 2023. Developing a concept plan for the park will run concurrently with an application to Bowen Island Municipality to rezone the properties from rural residential to park, as well as an amendment to the Official Community Plan from residential to regional park use.



# Draft Guiding Principles



## Draft Guiding Principles

The draft guiding principles describe values and aspirations that will guide the proposed regional park's planning, design, implementation and operation. These principles have been developed based on the project purpose and outputs from phase one.

- protect and enhance sensitive natural areas and strengthen ecological connectivity on Bowen Island;
- Ensure access, enjoyment and participation in the park by local residents, and minimize any impacts on local infrastructure;
- provide sustainable and inclusive park access, including opportunities for day and overnight use;
- foster relationships with First Nations to ensure meaningful opportunities for participation during planning, design and operation and programming;
- Incorporate public safety, stewardship and ecological resilience in all aspects of park planning design and management practices;
- create opportunities for learning and knowledge sharing through research, stewardship, programming and interpretation;
- integrate park design with the natural landscape, focus uses on disturbed areas and establish buffers to neighbouring land uses; and
- improve and adapt management and policies continually.



# Park Sub-Areas



TRAIL NEAR AN ENVIRONMENTAL COVENANT AREA

Five park sub-areas have been identified within the park based on biophysical resources, visual character, and opportunities for park visitor experiences:

- Burke Creek
- Forest Core
- Inland Bluffs
- East Bluffs
- Huszar Creek / Coastal Bluffs



PARK SUB-AREAS

# Draft Park Concept

The site’s significant ecological values will be protected and enhanced, and disturbed areas will be restored to a natural condition where possible. The draft concept focuses on utilizing previously cleared areas to support day-use and overnight uses, such as picnic areas and tent camping. Activity areas include trails, viewpoints and areas for overnight use.

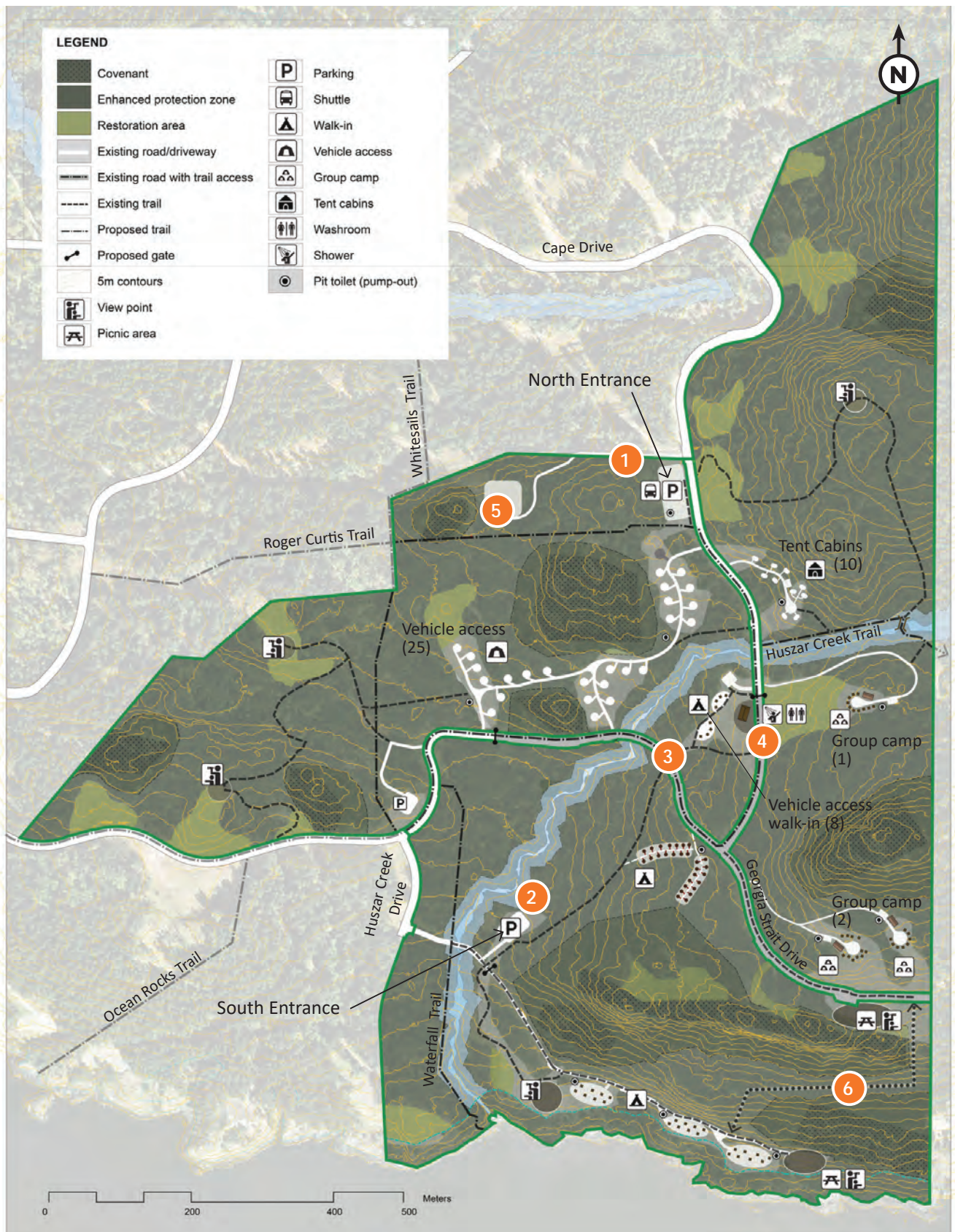
Sustainable access to the park, by shuttle or trail, will be prioritized, with some car access provided for accessibility. A quiet, pedestrian-focused experience will be created by limiting vehicles, converting sections of existing road to trails and public space, and establishing trail connectivity throughout the site.

Metro Vancouver is engaging First Nations to explore opportunities to work collaboratively over the long term and to incorporate traditional and current knowledge into park planning and management. The park will be implemented and opened in phases and adaptively managed. The draft concept plan shows the basic arrangement of the protected areas and park activities.



- 1 North Entrance**  
Parking +/- 20 vehicles  
Shuttle drop-off/pick up
- 2 South Entrance**  
Parking +/- 20 vehicles  
Shuttle drop-off/pick-up
- 3 Road closure**  
section of road closed to private vehicles,  
trail, operational and exceptional vehicle  
access permitted
- 4 Central Amenity Area**  
with washroom and shower
- 5 Service area**  
Storage and park office
- 6 Bluff Staircase**  
Subject to feasibility







# Burke Creek



BENCH, FENCE AND BRIDGE



REGENERATING VEGETATION

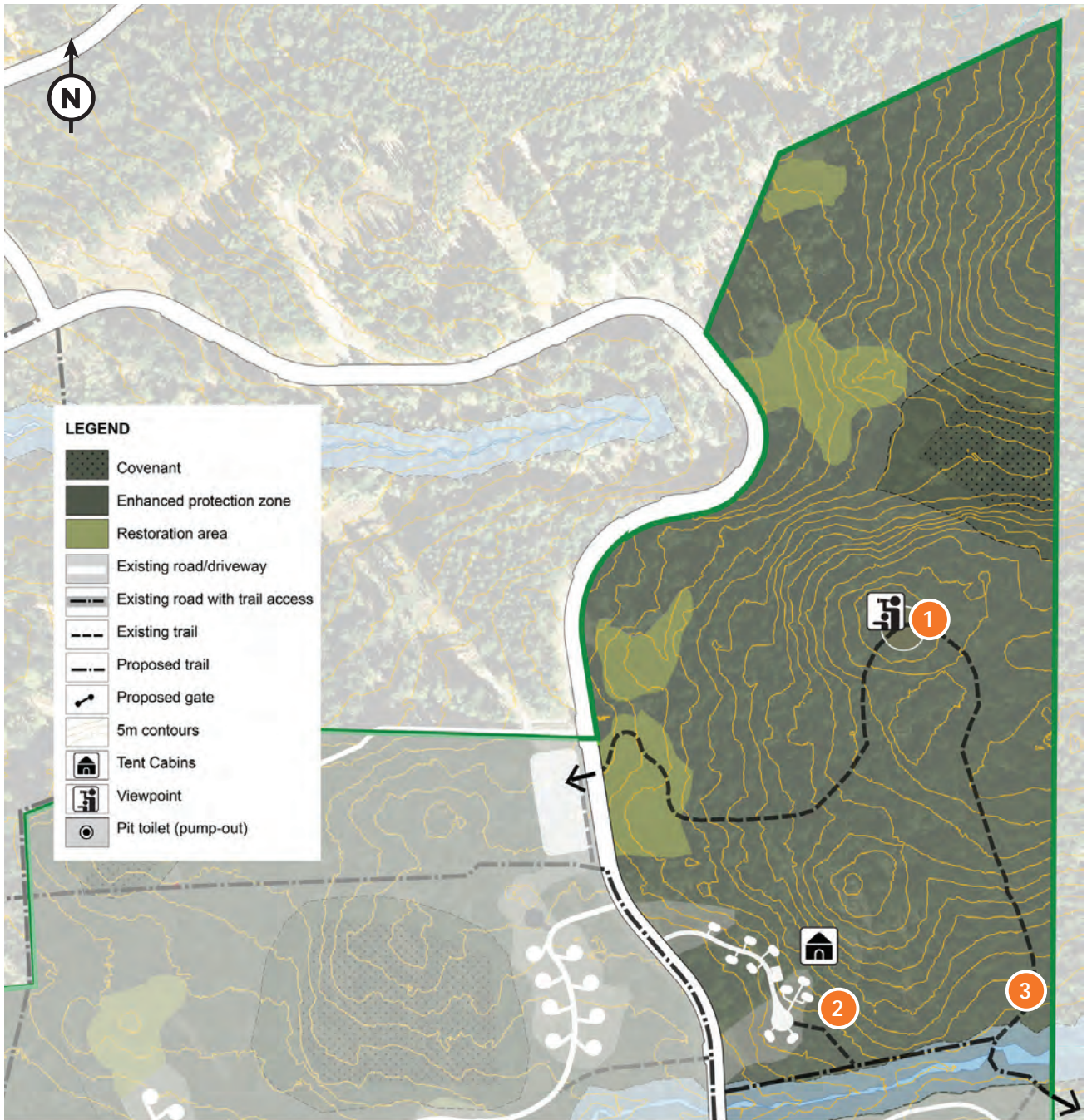


TENT CABIN

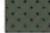
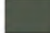












TRAIL





**LEGEND**

-  Covenant
-  Enhanced protection zone
-  Restoration area
-  Existing road/driveway
-  Existing road with trail access
-  Existing trail
-  Proposed trail
-  Proposed gate
-  5m contours
-  Tent Cabins
-  Viewpoint
-  Pit toilet (pump-out)



- 1 Proposed viewpoint**
- 2 Tent cabins**  
10 sites
- 3 Trail realignment/bridge**  
Locate amenities outside of riparian setback





## Forest Core



SMALL SCALE WASHROOM



PARKING FOR VEHICLE ACCESS WALK IN SITES

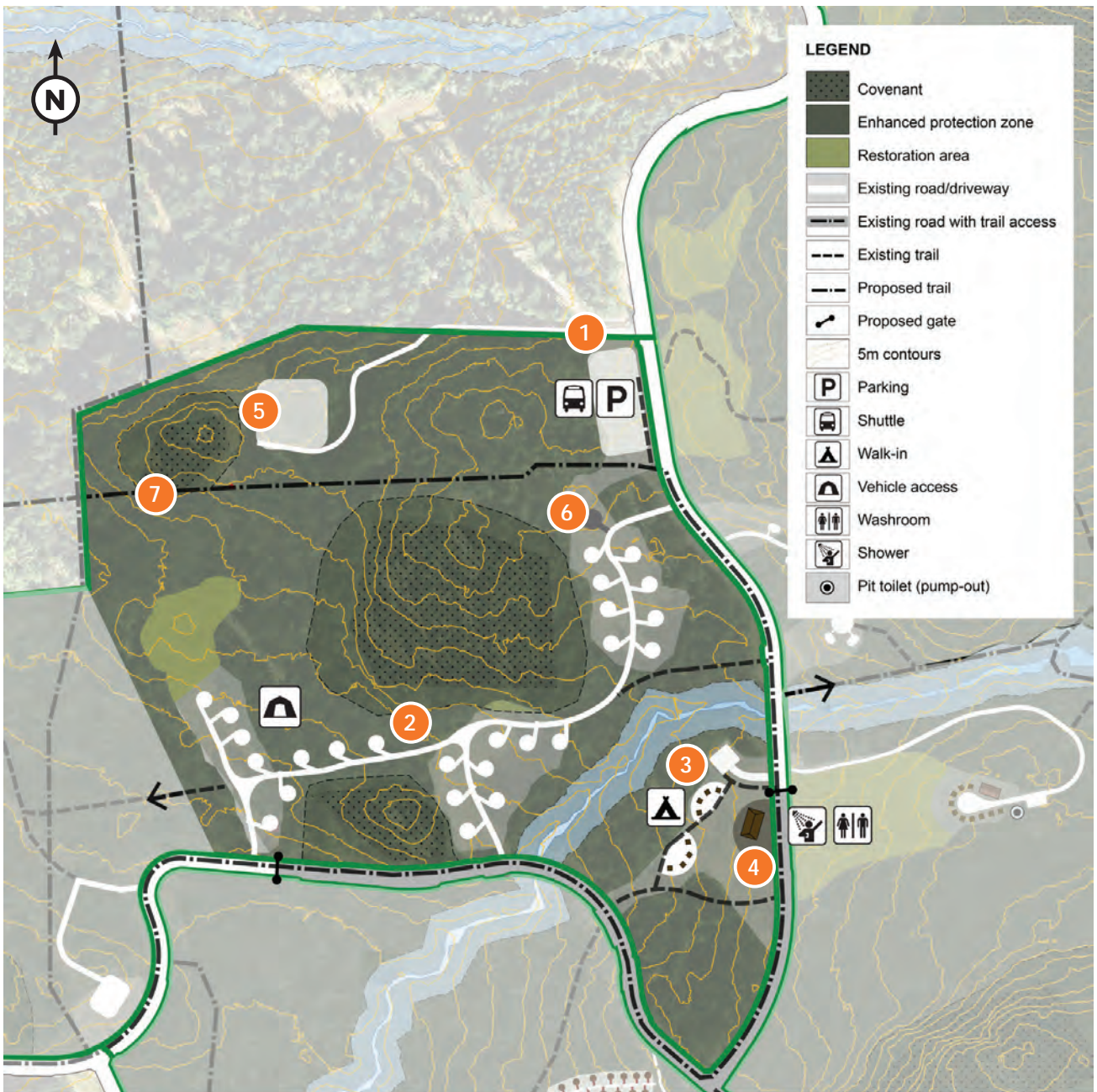


VEHICLE CAMPING



BOARDWALK TRAIL





- 1 South entrance**  
Parking +/- 20 vehicles  
Shuttle drop-off/pick-up
- 2 Vehicle camping**  
25 sites
- 3 Vehicle access walk-in**  
8 sites

- 4 Central amenity area**  
with washroom/shower
- 5 Service area**  
Storage and park office
- 6 Camp host**
- 7 Trail realignment**  
realign out of covenant





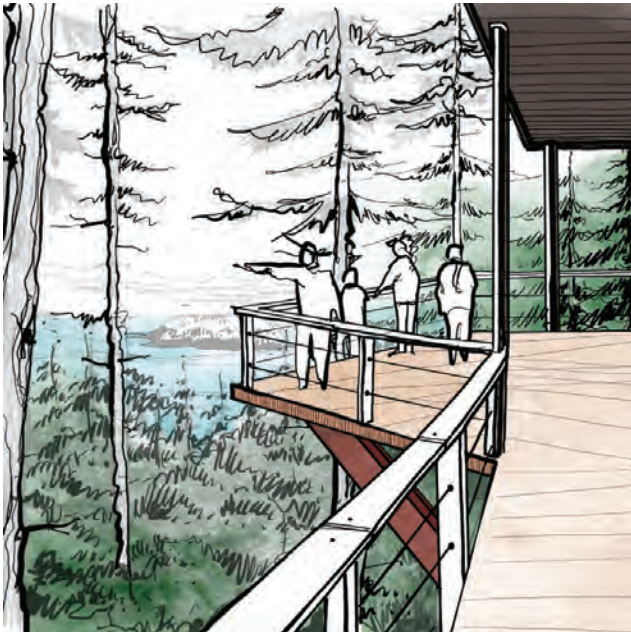
# Inland Bluffs



VIEW TOWARDS WORLCOMBE ISLAND



EXISTING DRIVEWAY

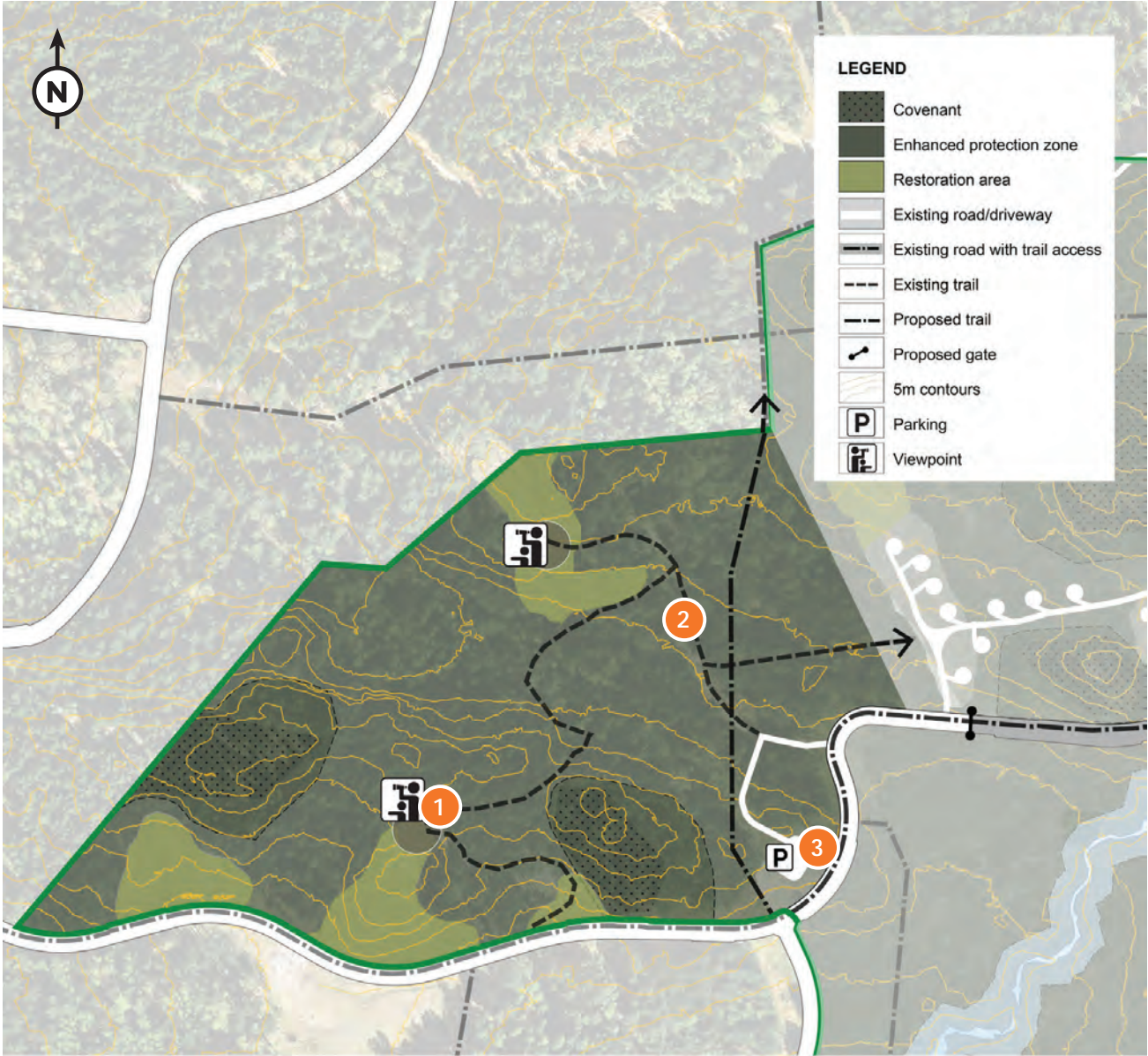


VIEWPOINT



INTERPRETIVE SIGNAGE





- 1 Viewpoint/s**
- 2 Interpretive trail** - developed on existing driveways and logging road
- 3 Staging area**  
+/- 10 vehicles





# East Bluffs



SHELTER



NATURE PLAY



GROUP CAMP SCENE



TENT PADS





- 1** Group camps  
3-5 sites
- 2** Shelter





## Huszar Creek / Coastal Bluffs



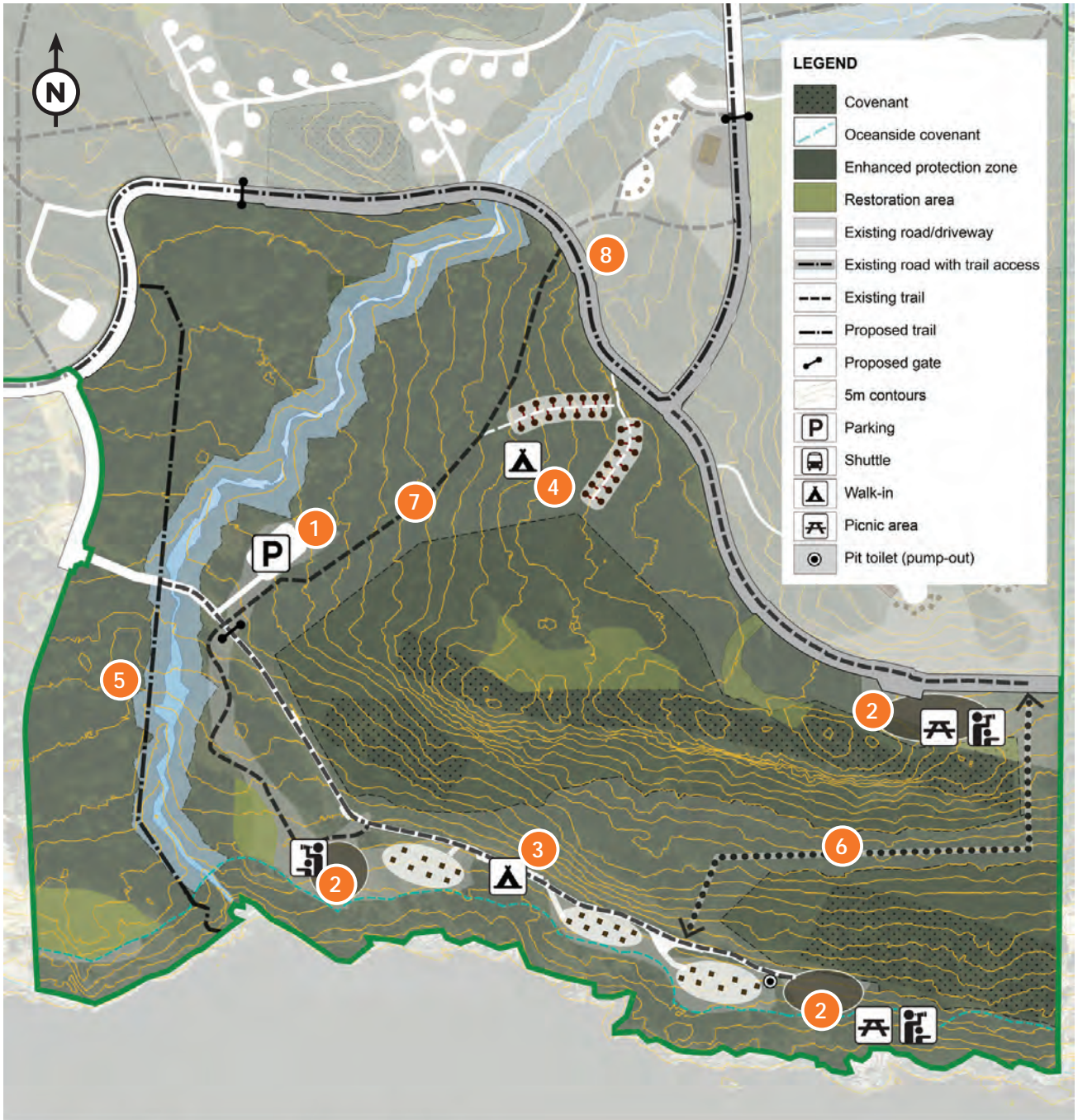
BLUFF STAIRCASE



OCEAN VIEWPOINT

- 1 **North entrance**  
Parking +/- 20 vehicles  
Shuttle drop-off/pick-up
- 2 **Ocean viewpoint / public space**
- 3 **Walk-in tent camping (Oceanfront)**  
24 sites
- 4 **Walk-in tent camping (Forest)**  
28 sites
- 5 **Potential trail realignment**
- 6 **Bluff staircase**  
subject to feasibility
- 7 **Proposed trail**  
utilises existing logging roads
- 8 **Cape Drive trailway**  
section of road closed to private vehicles,  
trail, operational and exceptional vehicle  
access permitted





0 100 250 Meters





## Huszar Creek / Coastal Bluffs (cont.)



FOREST TRAIL



FOREST PICNIC AREA



DAY USE AREA WITH PICNIC BENCHES AND NEW PLANTING



TENT PLATFORMS





WALK-IN FOREST CAMPING



WALK-IN CAMPING AT COASTAL BLUFFS



# Site Objectives and Elements

Site objectives, planned facilities and elements have been listed by park subarea. Objectives and actions on ecological restoration will be applied comprehensively throughout the entire park, ensuring the conservation and restoration of the park's ecosystems.

## Ecological Restoration

### Locations

- Previously disturbed areas
- Ocean Fronting lands , Environmental and Riparian Protection Covenant Areas
- Invasive species infestations
- Ephemeral wetlands and streams

### Objectives

- Assist in the re-establishment of natural vegetation already taking place
- Remove and manage invasive plant species
- Protect and restore vulnerable environmentally sensitive areas
- Enhance biodiversity values and protect species at risk
- Provide opportunities for habitat stewardship with the community.
- Monitoring and adaptive management

### Actions

- Restore plant communities and enhance biodiversity on disturbed sites through active revegetation efforts, the use of deer exclusion areas, and the addition of habitat enhancement elements such as rock piles, bat boxes, etc.
- Create a long-term monitoring and maintenance plan for restoration areas to allow for adaptive management
- Regular monitoring and mapping of park ecosystems and species using visual surveys, long-term monitoring plots, photo points, and other methods as appropriate.
- Implementation of the Integrated Pest Management Plan including inventory, monitoring and the application of early detection and rapid response principles .
- Provide meaningful and effective opportunities for park staff, volunteers and the public to engage in park ecosystem restoration and monitoring together.



## Burke Creek

AREA	ECOLOGICAL AND SITE FEATURES	SITE OBJECTIVES	FACILITIES & ELEMENTS
<b>1. VIEWPOINT AND TRAIL</b>	<ul style="list-style-type: none"> <li>Environmental and Riparian Protection Covenant Areas</li> <li>Mature forest</li> <li>Veteran and Wildlife Trees</li> <li>Logging road/s</li> </ul>	<ul style="list-style-type: none"> <li>Protect and enhance covenant areas and sensitive ecosystems</li> <li>Provide access to views</li> <li>Create opportunities for wildlife and nature viewing</li> <li>Educate visitors on sensitive ecosystems</li> </ul>	<ul style="list-style-type: none"> <li>Hiking trail</li> <li>Viewing area/s</li> <li>Potential bridge crossing to Huszar Creek</li> <li>Ecological restoration</li> <li>Restored homesites</li> <li>Nature programming and interpretation</li> </ul>
<b>2. TENT CABINS</b>	<ul style="list-style-type: none"> <li>Mature forest</li> <li>Veteran and Wildlife Trees</li> <li>Cleared homesite</li> </ul>	<ul style="list-style-type: none"> <li>Provide tent cabins facilities for people without access to camping equipment</li> <li>Provide limited parking (+/- 5 stalls)</li> </ul>	<ul style="list-style-type: none"> <li>10 tent cabins with small deck</li> <li>Amenities: Drinking water, pit toilet (pump-out), waste, receptacles</li> <li>Ecological restoration</li> </ul>

## Forest Core

AREA	ECOLOGICAL AND SITE FEATURES	SITE OBJECTIVES	FACILITIES & ELEMENTS
<b>1. SOUTH ENTRANCE</b>	<ul style="list-style-type: none"> <li>Mature forest</li> <li>Veteran and Wildlife Trees</li> <li>Cleared homesite</li> </ul>	<ul style="list-style-type: none"> <li>Create main park entrance and orientation node</li> <li>Provide park shuttle drop-off/pickup</li> <li>Orient visitors to park</li> <li>Educate visitors on sensitive ecosystems</li> <li>Protect and enhance covenant areas and sensitive ecosystems</li> <li>Separate adjacent landuses</li> </ul>	<ul style="list-style-type: none"> <li>Entry sign, wayfinding signage</li> <li>Interpretive signage</li> <li>Trail connections</li> <li>+/- 20 parking stalls</li> <li>Shuttle pick up / drop off area</li> <li>Bicycle parking</li> <li>Amenities: Pit toilet (pump-out), waste, receptacles</li> </ul>
<b>2. VEHICLE CAMPING</b>	<ul style="list-style-type: none"> <li>Mature forest</li> </ul>	<ul style="list-style-type: none"> <li>Protect and enhance covenant areas and</li> </ul>	<ul style="list-style-type: none"> <li>25 vehicle-accessible sites with one parking</li> </ul>



## Forest Core (cont.)

AREA	ECOLOGICAL AND SITE FEATURES	SITE OBJECTIVES	FACILITIES & ELEMENTS
	<ul style="list-style-type: none"> <li>Environmental and Riparian Protection Covenant Areas</li> <li>Ephemeral watercourses and ponds</li> <li>Veteran and Wildlife Trees</li> <li>Network of logging roads</li> <li>Cleared homesite/s</li> <li>Huszar Creek and riparian buffer</li> </ul>	sensitive ecosystems <ul style="list-style-type: none"> <li>Utilise cleared areas to locate camping</li> <li>Create visitor privacy</li> <li>Provide trail connections</li> <li>Maintain neighbour privacy</li> <li>Provide site supervision</li> </ul>	stall per site <ul style="list-style-type: none"> <li>Hiking trails</li> <li>Camp host site</li> <li>Fencing</li> <li>One-way access driveway on former logging road</li> <li>Amenities: waste receptacles, picnic tables, pit toilets (pump out) drinking water</li> </ul>
<b>3. WALK-IN VEHICLE CAMPING</b>	<ul style="list-style-type: none"> <li>Mature forest</li> <li>Veteran and Wildlife Trees</li> <li>Logging roads</li> <li>Cleared homesite/s</li> <li>Huszar Creek and riparian buffer</li> <li>Ephemeral watercourses and ponds</li> </ul>	<ul style="list-style-type: none"> <li>Protect and enhance covenant areas and sensitive ecosystems</li> <li>Provide vehicle-accessible walk-in camp sites with separate parking from camping</li> </ul>	<ul style="list-style-type: none"> <li>8 sites with central overnight use parking lot (8 stalls)</li> <li>Amenities: Waste receptacles, picnic tables, pit toilets (pump out) drinking water</li> <li>Fencing</li> <li>Planting/screening</li> </ul>
<b>4. CENTRAL AMENITY AREA</b>	<ul style="list-style-type: none"> <li>Cleared homesite/s</li> </ul>	<ul style="list-style-type: none"> <li>Create an orientation and gathering area for park visitors</li> <li>Provide washroom and shower block (on-septic system)</li> <li>Connect to other park areas</li> </ul>	<ul style="list-style-type: none"> <li>Central gathering area with seating and amenities</li> <li>Washroom/Shower building</li> <li>Hiking trails</li> </ul>
<b>5. SERVICE YARD</b>	<ul style="list-style-type: none"> <li>Environmental Protection Covenant Areas</li> <li>Veteran and Wildlife Trees</li> <li>Cleared homesite/s</li> </ul>	<ul style="list-style-type: none"> <li>Protect and enhance covenant areas and sensitive ecosystems</li> <li>Provide service yard and small site office (not accessible to public)</li> <li>Maintain neighbour privacy</li> <li>Provide site supervision</li> <li>Reroute trail in covenant areas</li> </ul>	<ul style="list-style-type: none"> <li>Building and yard</li> <li>Fencing/gates</li> <li>Buffer neighbouring properties</li> <li>Potential trail realignment</li> </ul>

## Forest Core (cont.)

AREA	ECOLOGICAL AND SITE FEATURES	SITE OBJECTIVES	FACILITIES & ELEMENTS
		<ul style="list-style-type: none"> <li>Protect covenant areas and sensitive ecosystems</li> </ul>	
<b>6. CAPE DRIVE TRAILWAY</b>	<ul style="list-style-type: none"> <li>6m wide municipal road</li> </ul>	<ul style="list-style-type: none"> <li>Collaborate with Bowen Island Municipality on the tenure</li> <li>Integrate road as part of trail system</li> <li>Permit limited vehicle access for facility and maintenance access</li> <li>Prioritise bikes and pedestrians</li> </ul>	<ul style="list-style-type: none"> <li>Existing road repurposed as trailway</li> <li>Gates</li> <li>Pavement markings to delineate use/s</li> </ul>

## Inland Bluffs

AREA	ECOLOGICAL AND SITE FEATURES	SITE OBJECTIVES	FACILITIES & ELEMENTS
<b>1. VIEWPOINT/S</b>	<ul style="list-style-type: none"> <li>Mature forest</li> <li>Environmental Protection Covenant Areas</li> <li>Veteran and Wildlife Trees</li> <li>Ephemeral watercourses and ponds</li> <li>Cleared homesite/s</li> <li>Views to Worlcombe Island</li> <li>Logging roads</li> </ul>	<ul style="list-style-type: none"> <li>Provide viewpoint feature/s that prohibits access to private lands</li> <li>Provide trail connectivity</li> <li>Provide small scale staging for accessibility</li> <li>Provide interpretative hiking experience</li> <li>Protect and enhance covenant areas and sensitive ecosystems</li> <li>Maintain neighbour privacy</li> </ul>	<ul style="list-style-type: none"> <li>+/- 10 parking stalls</li> <li>Viewpoint/s</li> <li>Hiking trails</li> <li>Interpretive signage/features</li> <li>Buffer neighbouring properties</li> <li>Restored homesites</li> <li>Fencing</li> </ul>



## East Bluffs

AREA	ECOLOGICAL AND SITE FEATURES	SITE OBJECTIVES	FACILITIES & ELEMENTS
1. GROUP CAMP/S	<ul style="list-style-type: none"> <li>• Mature forest</li> <li>• Environmental and Riparian Protection Covenant Areas</li> <li>• Veteran and Wildlife Trees</li> <li>• Huszar Creek and riparian buffer</li> </ul>	<ul style="list-style-type: none"> <li>• Protect and enhance covenant areas and sensitive ecosystems</li> <li>• Provide group camp facilities for youth/s and other groups</li> <li>• Provide cooking/weather shelter</li> <li>• Maintain neighbour privacy</li> <li>• Protect covenant areas and sensitive ecosystems</li> </ul>	<ul style="list-style-type: none"> <li>• Tent pads</li> <li>• Limited parking (5 stalls per group campsite)</li> <li>• Amenities (waste, receptacles, pit toilet (pump-out) shelter with picnic tables, group gathering area)</li> <li>• Fencing</li> <li>• Nature play elements</li> </ul>

## Huszar Creek / Coastal Bluffs

AREA	ECOLOGICAL AND SITE FEATURES	SITE OBJECTIVES	FACILITIES & ELEMENTS
1. NORTH ENTRANCE	<ul style="list-style-type: none"> <li>• Huszar Creek and riparian buffer</li> <li>• Fragments of at-risk mature forest</li> <li>• Logging roads</li> </ul>	<ul style="list-style-type: none"> <li>• Protect covenant areas and sensitive ecosystems</li> <li>• Provide staging/access for day-use waterfront park</li> <li>• Provide staging/access for shuttle/walk-in/bike-in overnight uses</li> <li>• Maintain neighbour privacy</li> </ul>	<ul style="list-style-type: none"> <li>• +/- 20 parking stalls in previously cleared areas</li> <li>• Bicycle parking</li> <li>• Shuttle drop off/pick up area</li> <li>• Camping carts</li> <li>• Amenities: (pit toilets (pump-out), drinking water, waste, receptacles)</li> </ul>
2. OCEAN VIEWPOINTS	<ul style="list-style-type: none"> <li>• Bald eagle nest (lot 23)</li> <li>• Ocean Fronting Lands restrictive covenant</li> <li>• Seaside Junipers</li> <li>• Intertidal zones and bedrock</li> <li>• Water seeps and associated rare plant assemblages</li> </ul>	<ul style="list-style-type: none"> <li>• Protect and enhance covenant areas and sensitive ecosystems</li> <li>• Provide access to waterfront views</li> <li>• Create opportunities for wildlife and nature viewing</li> <li>• Provide shade and rest areas</li> </ul>	<ul style="list-style-type: none"> <li>• Hiking trails</li> <li>• Fencing, interpretive signage</li> <li>• Boardwalks/viewpoints</li> <li>• Bluff staircase (subject to feasibility)</li> <li>• Amenities: Picnic tables, seating, sitting/viewing platforms, weather shelter/s)</li> </ul>

## Huszar Creek / Coastal Bluffs (cont.)

AREA	ECOLOGICAL AND SITE FEATURES	SITE OBJECTIVES	FACILITIES & ELEMENTS
		<ul style="list-style-type: none"> <li>Educate visitors on sensitive ecosystems</li> <li>Manage visitor safety</li> </ul>	
<p><b>3. WALK-IN TENT CAMPING (OCEANFRONT)</b></p>	<ul style="list-style-type: none"> <li>Ocean Fronting Lands restrictive covenant</li> <li>Seaside Junipers</li> <li>Intertidal zones and bedrock</li> <li>Water seeps and associated rare plant assemblages</li> <li>Fragments of at-risk mature forest</li> </ul>	<ul style="list-style-type: none"> <li>Protect and enhance covenant areas and sensitive ecosystems                             <ul style="list-style-type: none"> <li>Educate visitors on sensitive ecosystems</li> </ul> </li> <li>Provide low-impact overnight camping for hikers and bikers (May-Oct)</li> <li>Provide opportunities for day visitors (Nov-Apr)</li> <li>Utilize existing cleared homesites (cleared lots, access easement, site servicing)</li> <li>Provide shelter from sun/wind</li> <li>Manage visitor safety</li> </ul>	<ul style="list-style-type: none"> <li>24 walk-in campsites with raised tent pads</li> <li>Fencing</li> <li>Access road (asphalt) used for pedestrian/bike/maintenance access</li> <li>Amenities: (pit toilets (pump-out), drinking water, picnic tables, bike racks, lockers, weather shelter, waste, receptacles)</li> </ul>
<p><b>4. WALK-IN TENT CAMPING (FOREST)</b></p>	<ul style="list-style-type: none"> <li>Mature forest</li> <li>Nearby Huszar Creek riparian buffer</li> <li>Ephemeral watercourses</li> <li>Environmental and Riparian Protection Covenant Areas</li> <li>Existing logging grades and cleared areas</li> </ul>	<ul style="list-style-type: none"> <li>Protect and enhance covenant areas and sensitive ecosystems</li> <li>Educate visitors on sensitive ecosystems</li> <li>Provide low-impact overnight camping for hikers and bikers (May-Oct)</li> <li>Provide trail connectivity</li> </ul>	<ul style="list-style-type: none"> <li>28 walk-in campsites with raised tent pads</li> <li>Amenities (picnic tables, lockers, bike racks)</li> <li>Fencing, interpretive signage</li> </ul>



