

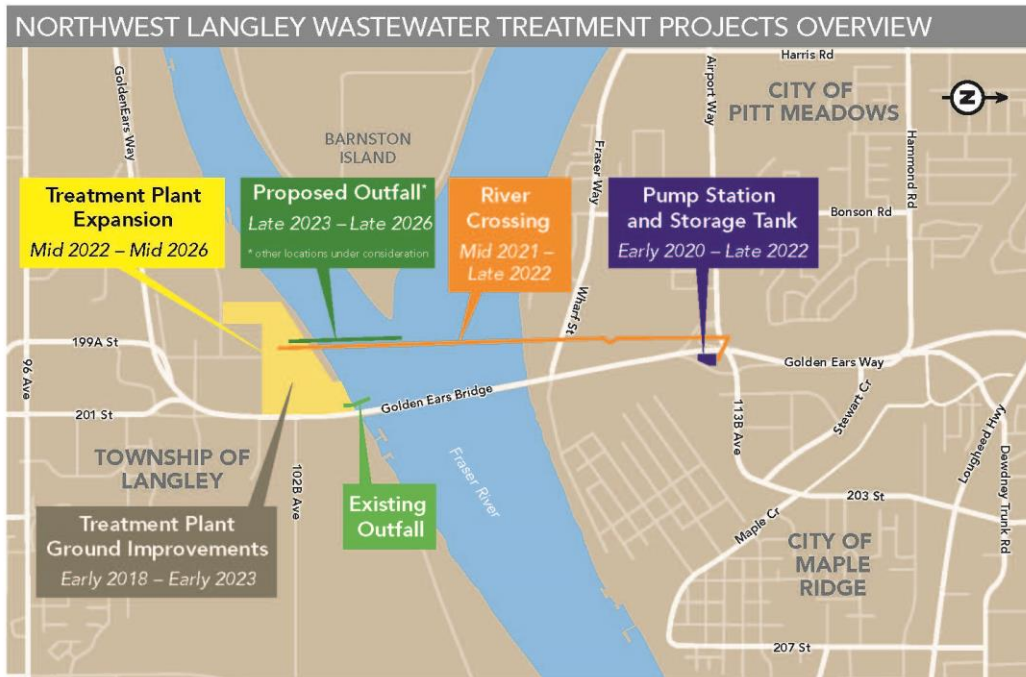
Project Overview

As part of a new servicing plan for the Fraser Sewage Area, and to ensure continued protection of public health and the environment, Metro Vancouver is upgrading the Northwest Langley Wastewater Treatment Plant. Sewage generated in Pitt Meadows and Maple Ridge is currently pumped all the way to the Annacis Island Wastewater Treatment Plant in the City of Delta. Once these upgrades are complete, sewage from these municipalities will be treated more locally at the Northwest Langley Wastewater Treatment Plant.

This upgrade has been phased over several years and will be constructed through four projects:

- **Pump Station and Storage Tank:** a new pump station and storage tank in Maple Ridge near Golden Ears Way and 113B Avenue. Construction is currently underway on the north side of the Fraser River.
- **Fraser River Crossing:** two new pipes tunneled under the Fraser River to carry wastewater from the new pump station in Maple Ridge to the treatment plant in the Township of Langley.
- **Northwest Langley Wastewater Treatment Plant Expansion:** expansion of the existing wastewater treatment plant in the Township of Langley.
- **Outfall Pipe:** a new outfall pipe to carry treated wastewater from the plant to the Fraser River.

The Fraser River Crossing project is the second of the four planned projects in the Northwest Langley Wastewater Treatment Project. Construction will take place from Summer 2021 to late 2022 (see map below).



Project Benefits

Metro Vancouver is undertaking the Northwest Langley Wastewater Treatment Projects to continue to protect public health and the environment in a growing region.

The Northwest Langley Wastewater Treatment Projects will:

- Help prevent untreated wastewater back-ups and overflows
- Strengthen the plant to ensure it will continue to operate in the event of an earthquake
- Adapt to sea level rise from climate change
- Reduce treatment plant water and energy use
- Treat wastewater beyond the levels set by provincial and federal regulations using tertiary treatment methods
- Meet the needs of our growing population

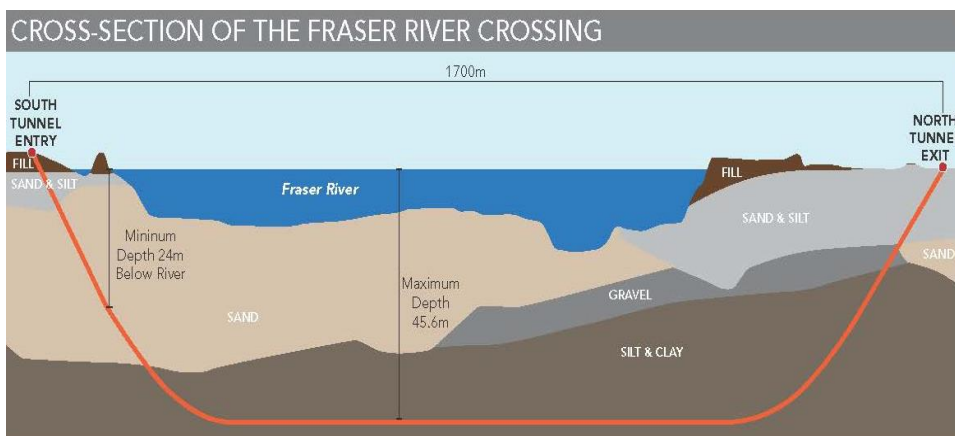
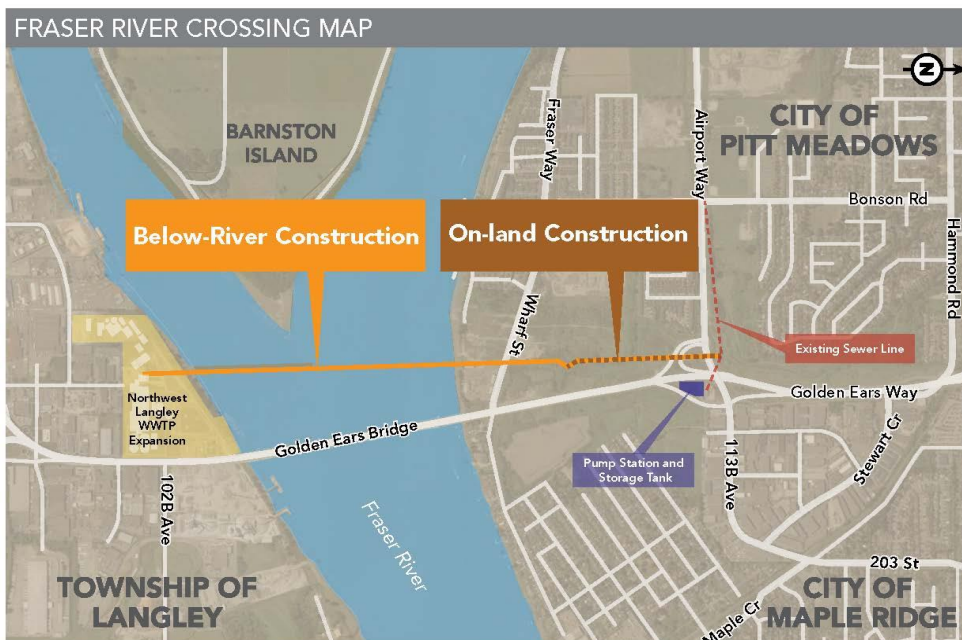


Fraser River Crossing Project

Two new pipes will be constructed under the Fraser River that will carry wastewater from the new pump station in the City of Maple Ridge to the Treatment Plant in the Township of Langley.

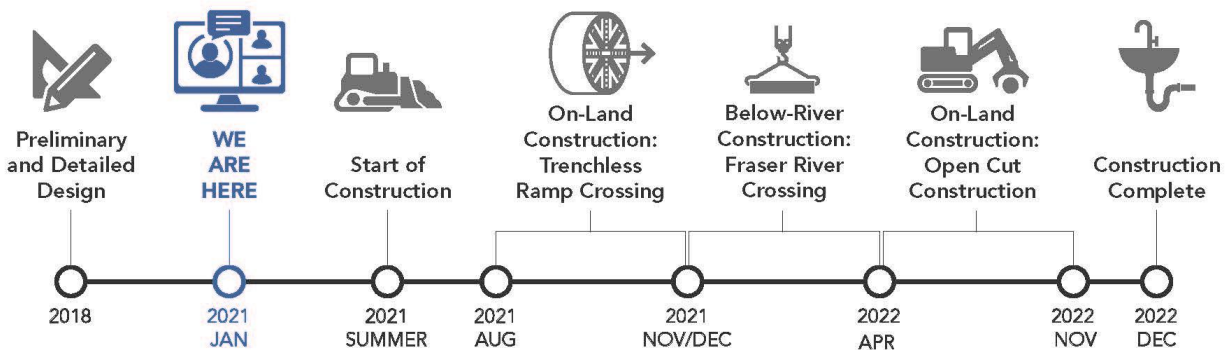
Under the river, the pipes will be located in two tunnels deep beneath the riverbed to avoid impacts to the river. On-land construction will include sections of open-cut work, as well as trenchless construction methods to go underneath roadways.

The new pipes will increase the capacity of this existing system to help ensure the continued reliable and safe management of liquid waste in our growing region and will be designed to meet current seismic standards.



Fraser River Crossing Project Timeline

PROJECT TIMELINE



Fraser River Crossing Project: On-Land Construction

Location

This portion of work will extend from the Golden Ears Bridge on and off-ramps by the 113 B Avenue Overpass the north bank of the Fraser River just north of Wharf Street.

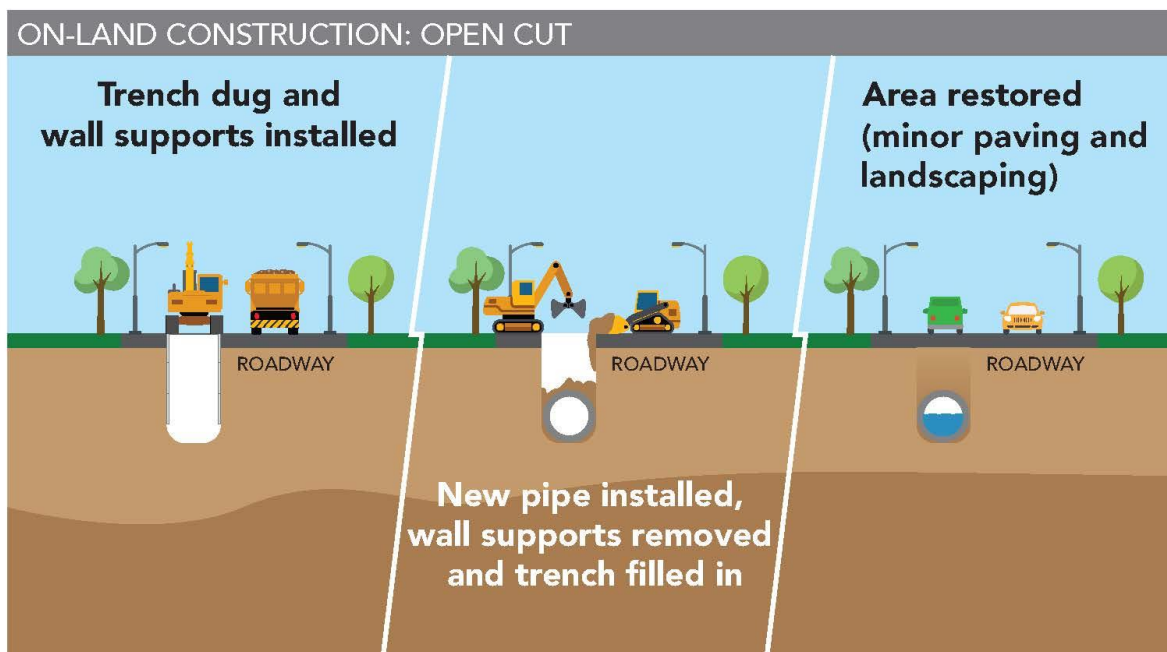
Timeline

Trenchless Construction: August 2021 – December 2021

Open-Cut Construction: April 2022 – November 2022

Project Activities

- Excavating a trench up to 7m deep to install the new pipes
- Installing two new sewer pipes using open-cut and trenchless construction methods. The total on-land construction is approximately 700 metres long and will connect to the river crossing portion
- Constructing a new underground air valve chamber at the connection of the open cut section and river crossing
- Constructing a new underground blowdown chamber south of the Golden Ears on-ramp
- Restoring impacted habitat and vegetation



Fraser River Crossing Project: Below-River Construction

Location

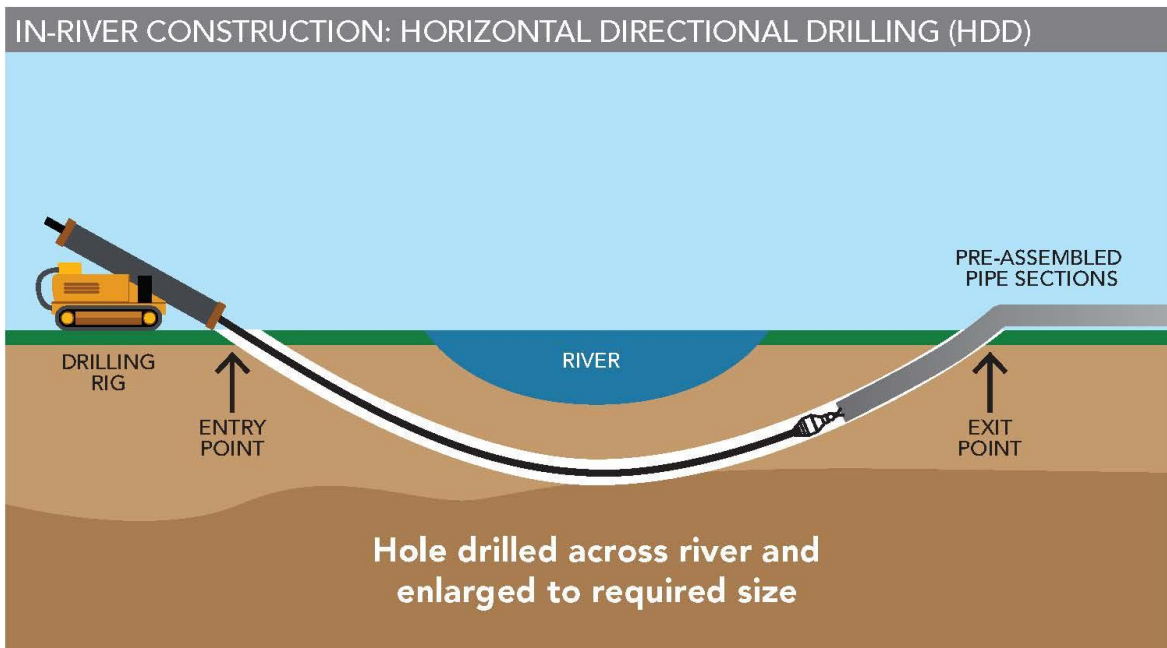
Construction of the two tunnels will launch from an entry point north of Wharf Street on the Maple Ridge side and progress south under the Fraser River to the exit point at the treatment plant on the Township of Langley side.

Timeline

November 2021 – April 2022

Project Activities

- Drilling two tunnels under the riverbed
- Assembling and laying out the pipes in one continuous length from south of Hammond Road to the entry point north of Wharf Street
- Installing two new sewer pipes approximately 1.6km long below the river



Environmental Considerations and Mitigation Measures

Metro Vancouver is committed to minimizing the impacts of this project on the marine environment and surrounding habitat. A number of mitigation measures are in place to ensure impacts to fish, wildlife, their habitats, and archaeological sites are minimized, including:

- Following the permitting and approvals process at the federal and provincial levels
- Implementing a Habitat Protection and Restoration Plan
- Having an Environmental Protection Plan in place
- Completing an Environmental Baseline Report and an Environmental Setting Assessment
- Developing a Construction Environmental Management Plan
- Conducting environmental field surveys and water quality monitoring
- Ensuring environmental and archeological monitoring during construction

Minimizing Construction Impacts

Metro Vancouver works hard to reduce the impacts of construction on surrounding communities as much as possible. Impacts during construction of this essential sewer infrastructure project will include:

Noise: There will be some noise associated with the river crossing construction portion of the project at the north entry HDD tunnel entry point, north of Wharf Street. There will also be some noise (heavy equipment and pile driving) associated with the on-land construction extending from Golden Ears Bridge on and off-ramps by the 113 B Avenue Overpass to the north bank of the Fraser River (north of Wharf Street). Crews will attempt to reduce operational noise impacts where possible. All work will comply with municipal noise bylaws or granted bylaw variances.

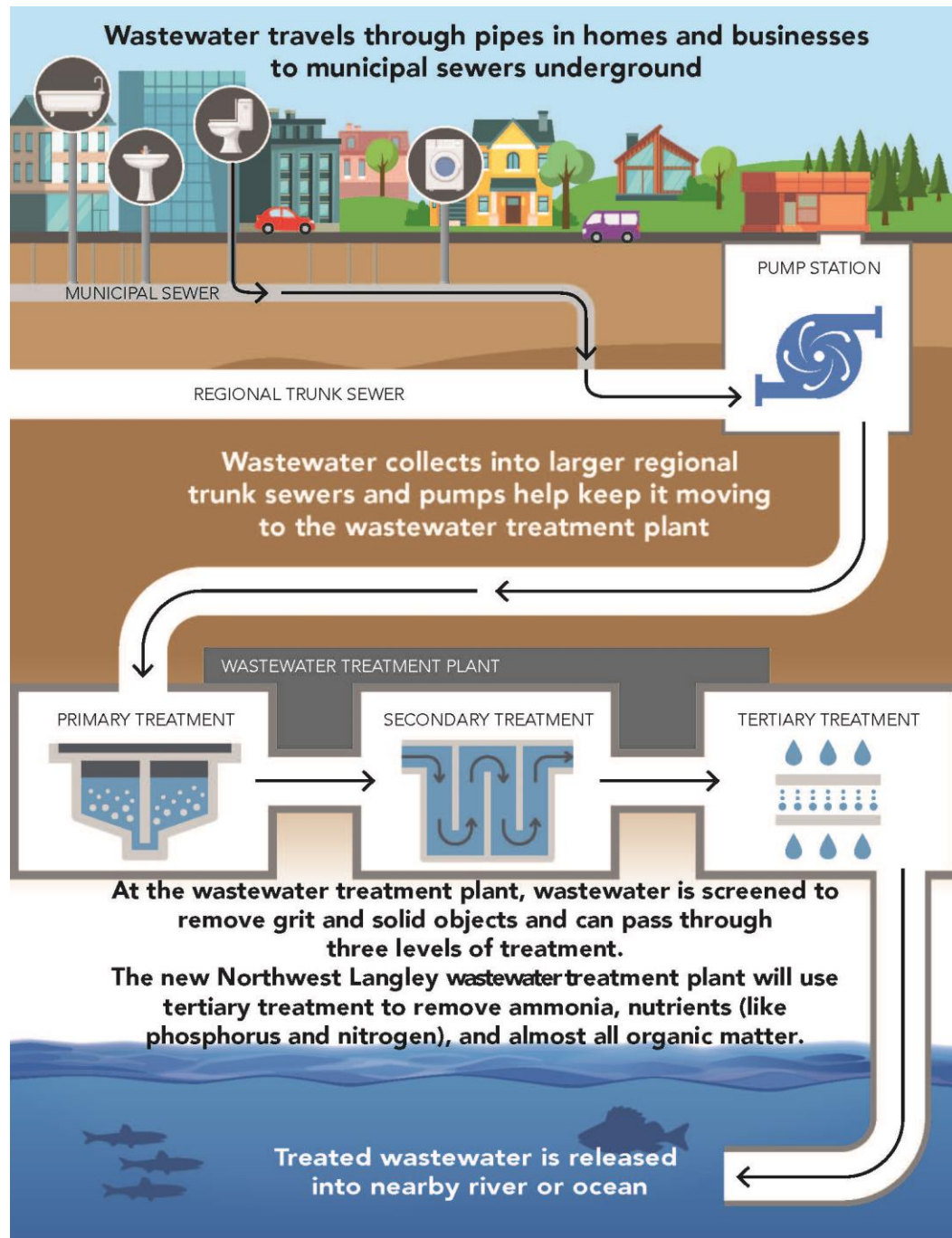
Dust: Crews will tarp all haul trucks and use water to control on-site dust.

Traffic Impacts: Metro Vancouver will actively monitor and manage traffic activity in the project areas throughout construction by implementing a comprehensive Traffic Management Plan. Detours, restrictions, and temporary delays will be in effect; please follow the direction of signage and traffic control personnel.

Typical Work Hours: Monday to Saturday, between 7:00 am and 9:00 pm. Pile driving will be restricted to 8:00 am to 5:00 pm. Crews may need to work extended hours during construction to complete certain tasks and maintain the schedule; this may include a period of overnight work during HDD construction. All work will comply with local and municipal bylaws or granted bylaw variances.

How Wastewater is Treated

Wastewater treatment removes substances that can harm human health and the environment. If we don't remove pollutants from wastewater, they can flow directly into our rivers and oceans. This can threaten marine life, public health, and our ability to swim, boat, and fish in our local waters. The goal of wastewater treatment is to protect and maintain healthy waterways.



Working with the Community

Metro Vancouver is committed to working closely with its government partners, First Nations, and local communities throughout this project. The project team will:

- Send regular project updates to local residents and businesses notifying of any disruptions
- Be responsive to any concerns raised about project activities
- Maintain a project website with up-to-date information
- Provide a community liaison to respond to questions and concerns during construction

To receive project updates and receive information on upcoming opportunities to learn more about this project, please join our email database by clicking the blue sign up button on the bottom right-hand side of this webpage.

Contacting Metro Vancouver:

Phone: 604-432-6200 (Monday to Friday from 8:00 a.m. to 4:30 p.m.)

Email: icentre@metrovancover.org (Please include “Northwest Langley Wastewater Treatment Projects – Fraser River Crossing” in the subject line)

After Hours Emergency: 604-451-6610