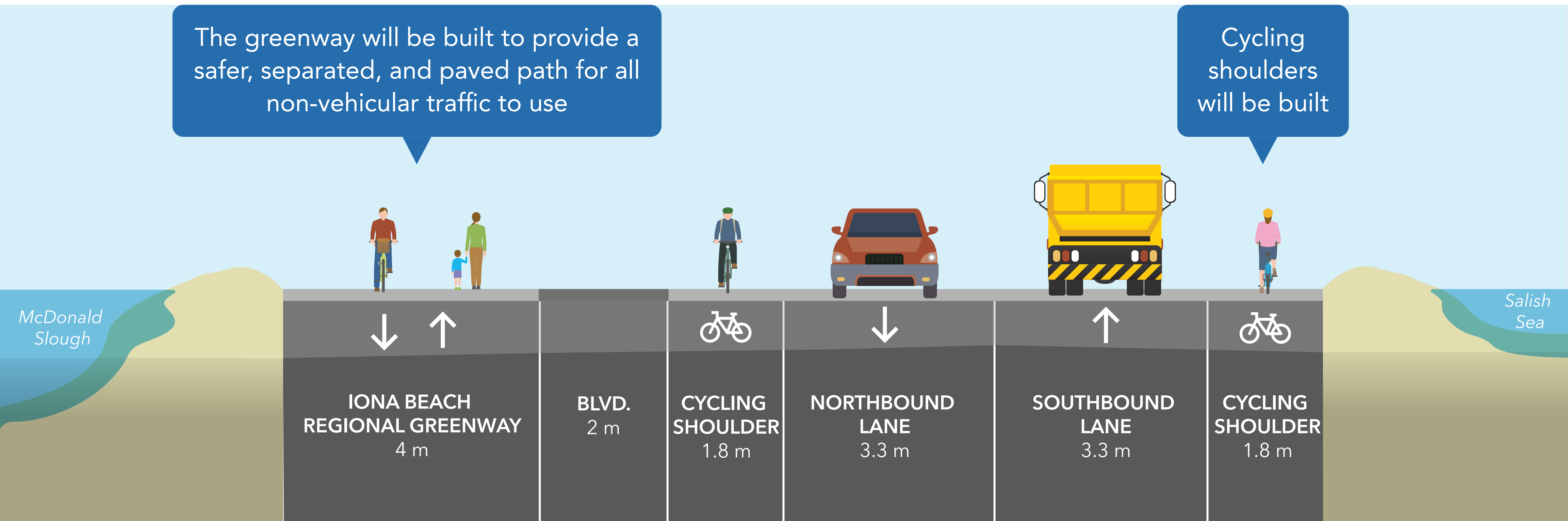


Iona Island Wastewater Treatment Plant Projects

Proposed Iona Island Causeway

Metro Vancouver is improving the Iona Island Causeway to provide safer access to Iona Island during construction and ensure materials are efficiently delivered to site.



Artist's rendering looking north (intended to demonstrate road dedication). Variables are for illustrative purposes only.

Greenway Material

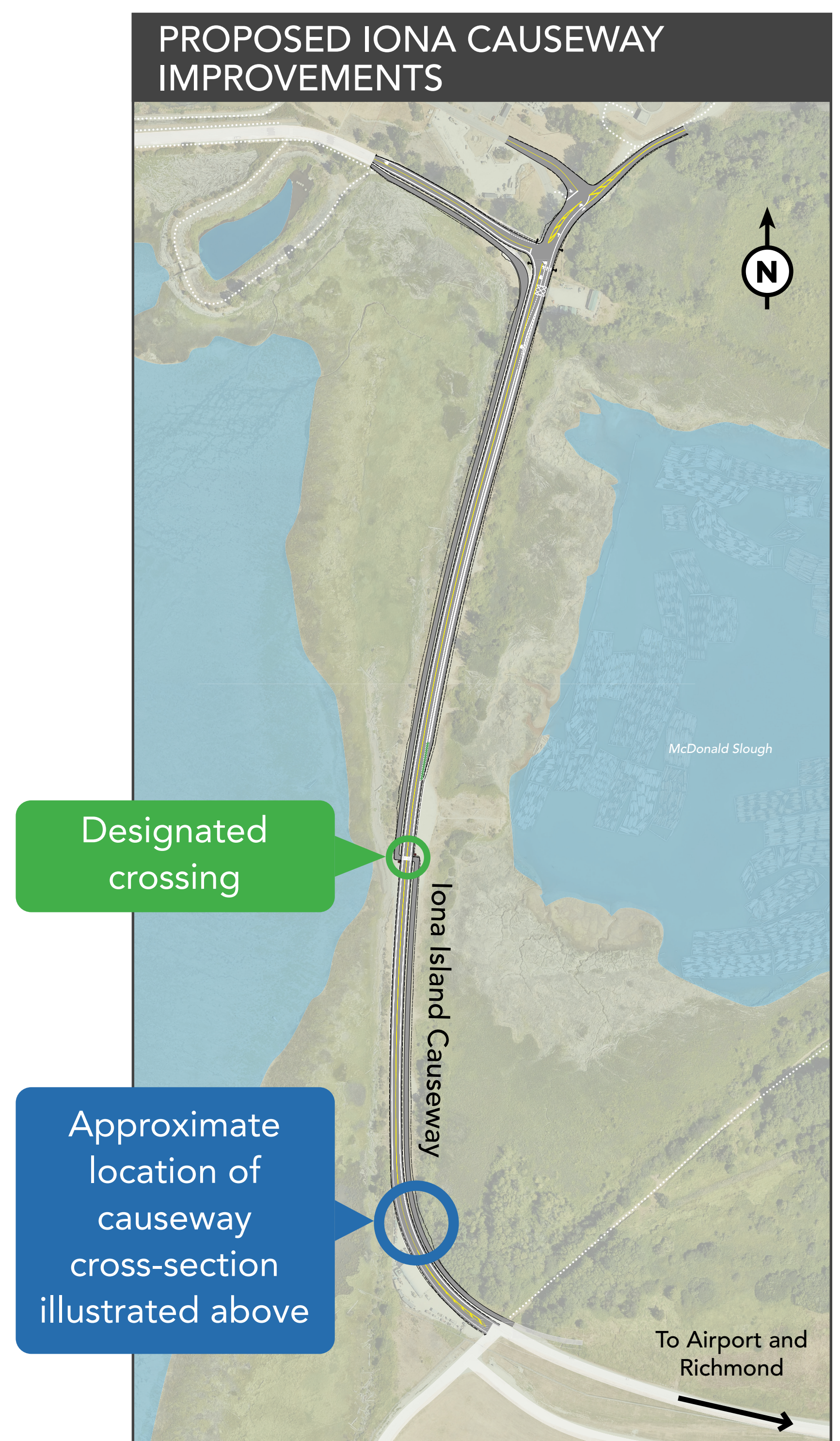
This section of the greenway will be paved to encourage all non-vehicular traffic to use the separated path as a safe alternative to the road. The paved greenway will be maintained in combination with the road during construction of the Iona Projects.

Cyclist Use

Metro Vancouver is constructing the greenway to provide a safe, separated, and paved route for all non-vehicular traffic, including all levels of cyclists. Cyclists can ride in the cycling shoulder, greenway, or vehicle lane at their discretion.

Causeway Crossing

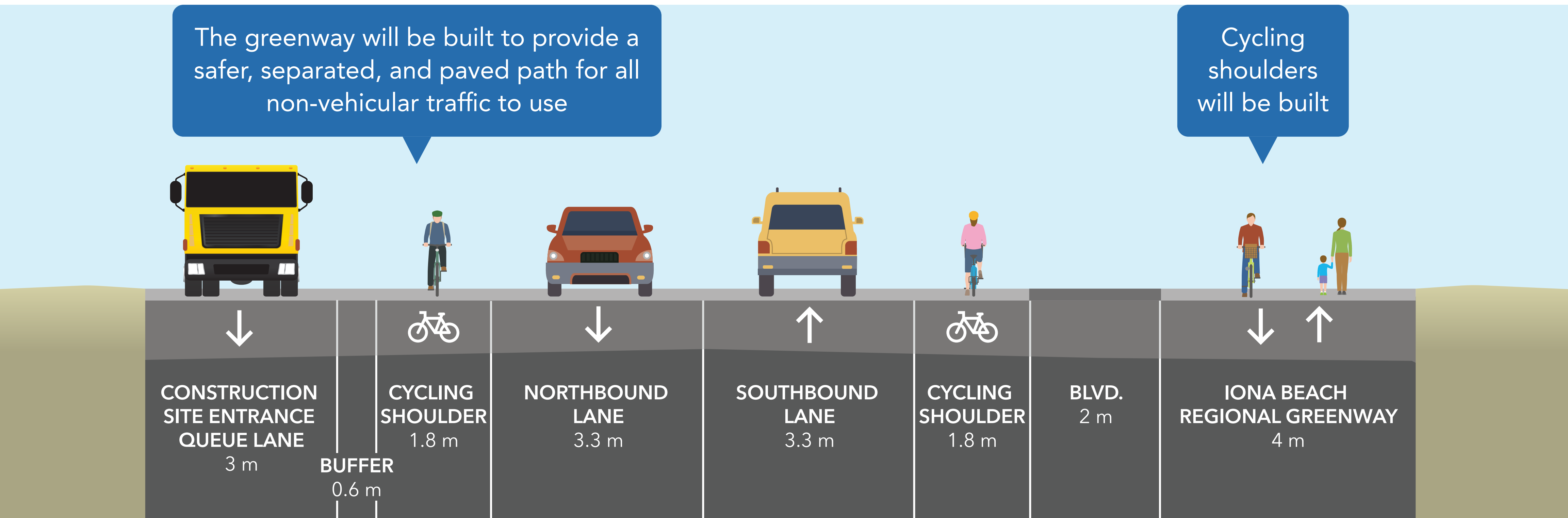
Vancouver Airport Authority is currently building a multi-use path on the east side of Ferguson Road. The Iona Beach Regional Greenway must start on the east side of the road to connect to the path. A designated crossing will be painted on the road and user-activated flashing lights will be installed.



Iona Island Wastewater Treatment Plant Projects

Proposed Iona Island Causeway

Metro Vancouver is improving the Iona Island Causeway to provide safer access to Iona Island during construction and ensure materials are efficiently delivered to site.



Artist's rendering looking south (intended to demonstrate road dedication). Variables are for illustrative purposes only.

Construction Traffic

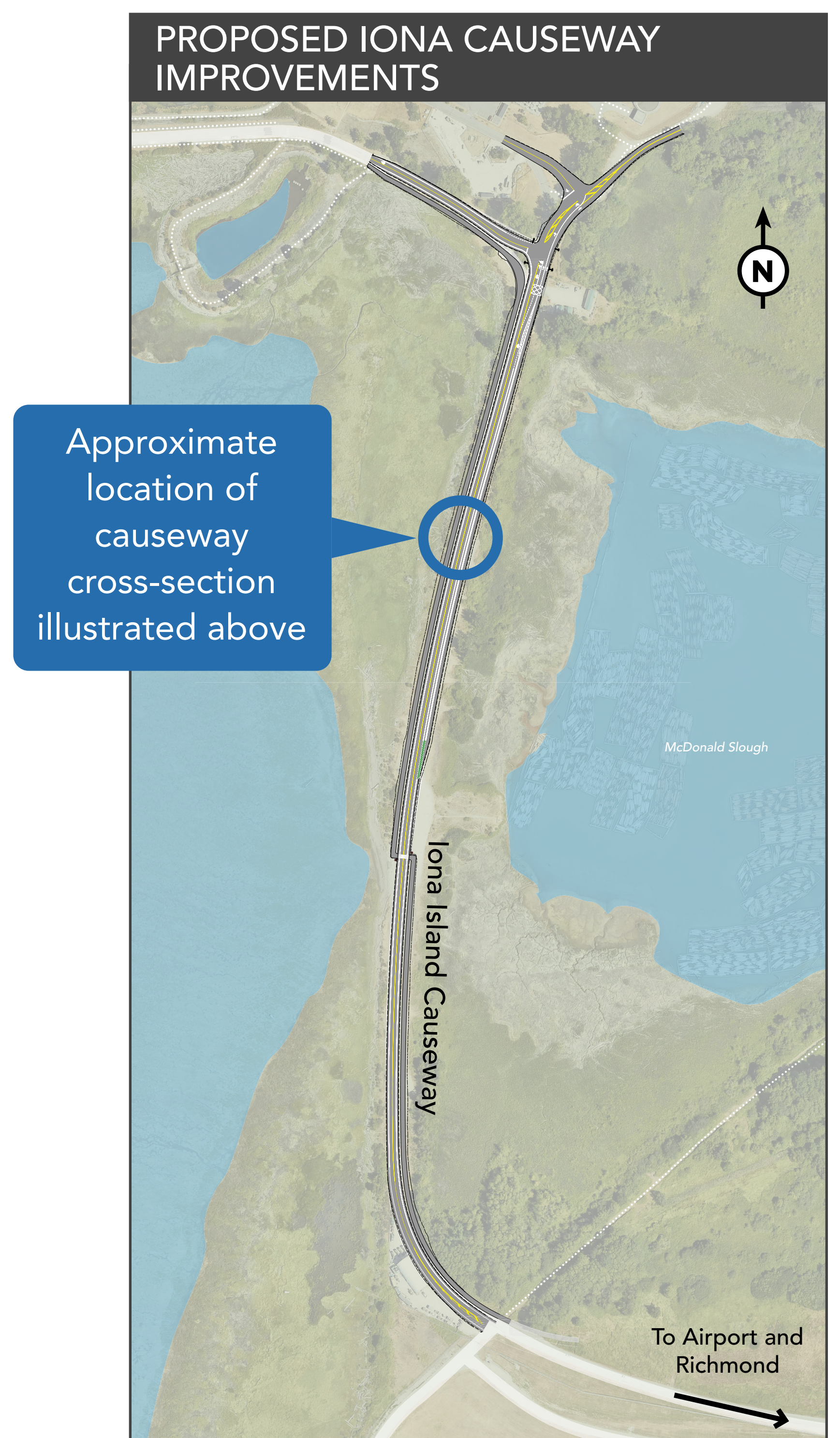
There will be a significant increase in construction traffic travelling to Iona Island throughout the Iona Projects that is anticipated to start in 2025. Metro Vancouver is improving the causeway to provide safer access to Iona Beach Regional Park for visitors of all abilities.

Environmental Factors

The design maximizes available space on the causeway and minimizes impact on sensitive ecosystems.

Greenway Width

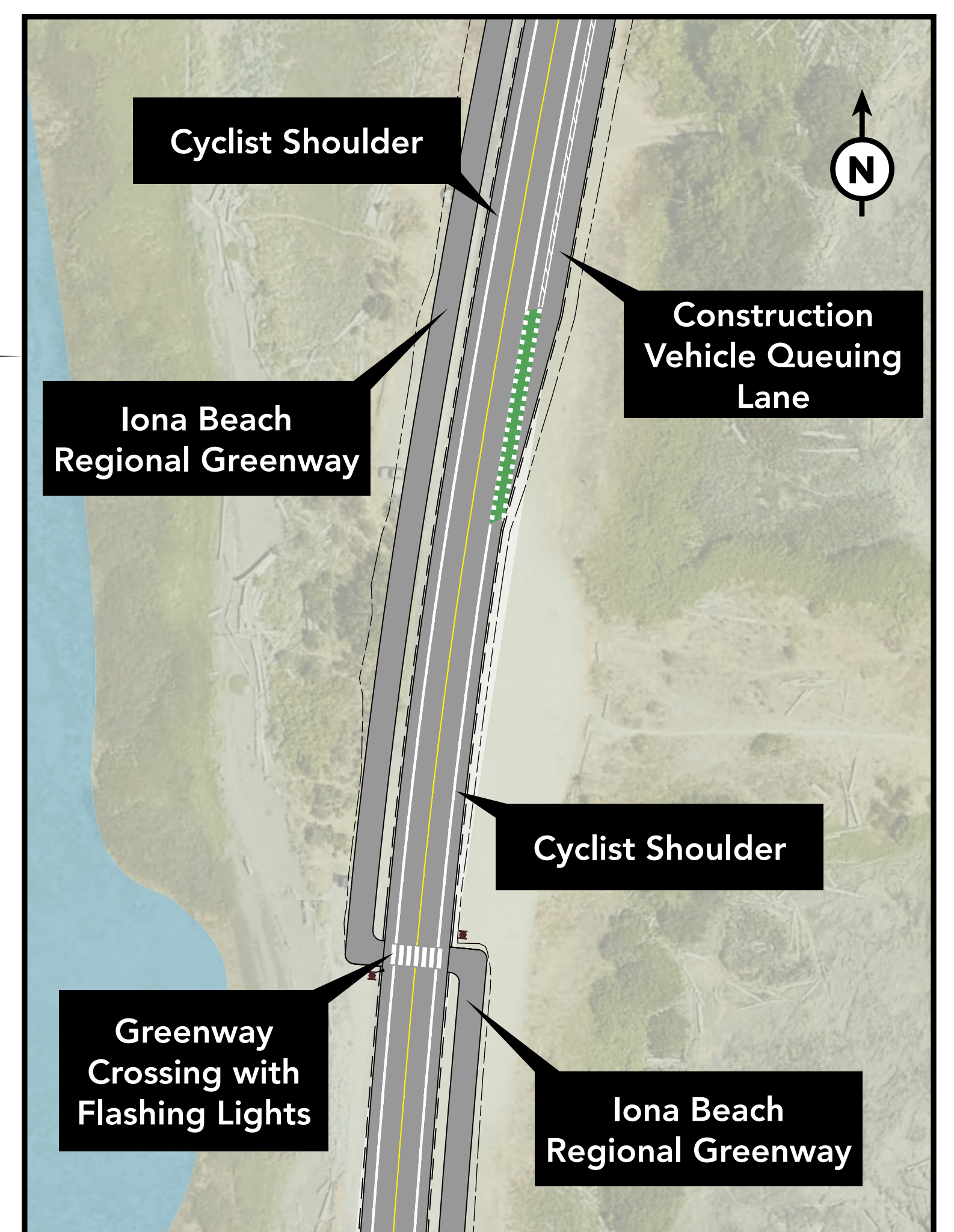
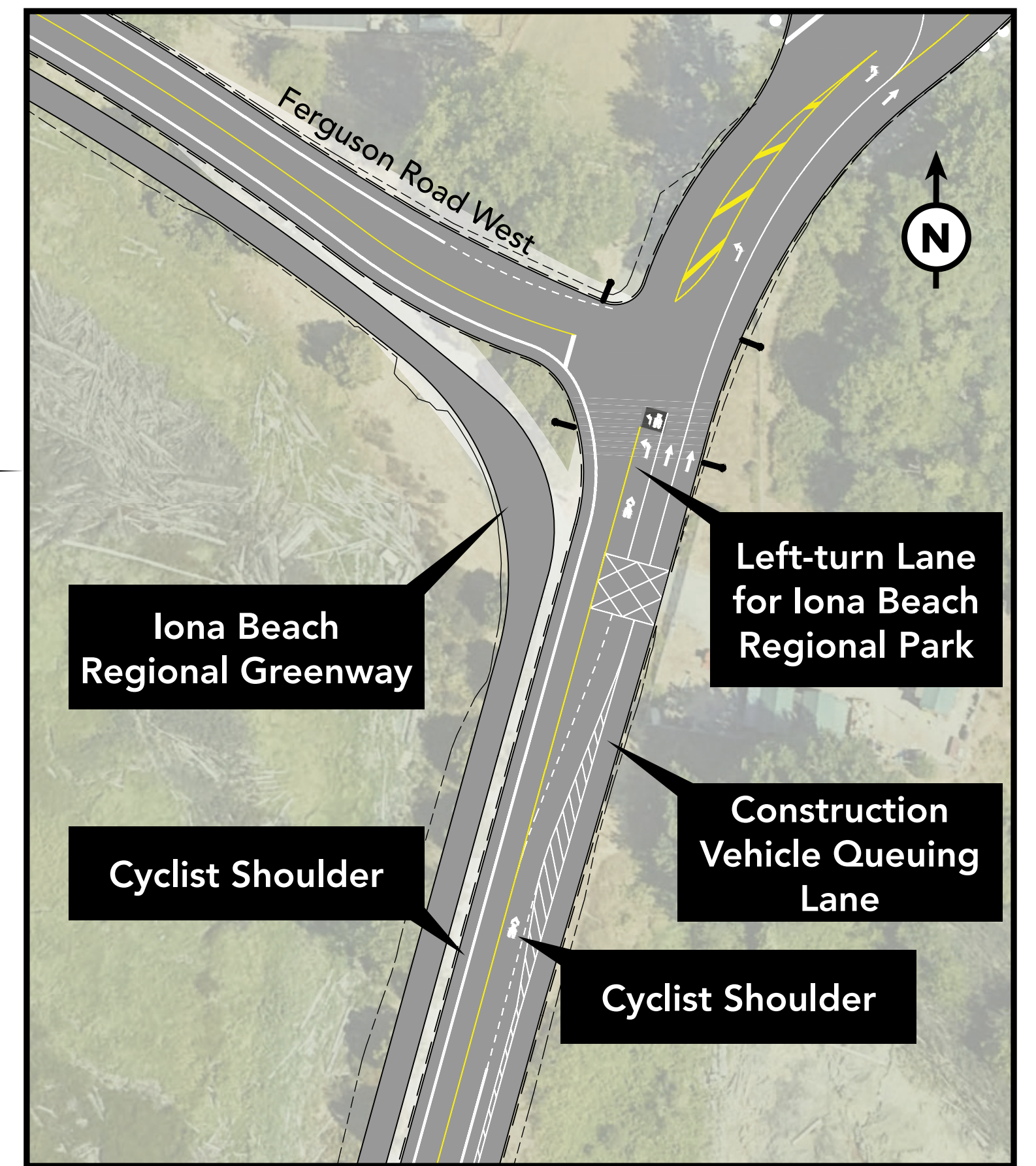
The greenway will be 4 metres wide along the causeway and will ensure a smooth transition to the Vancouver Airport Authority multi-use path.



Iona Island Wastewater Treatment Plant Projects

Proposed Iona Island Causeway

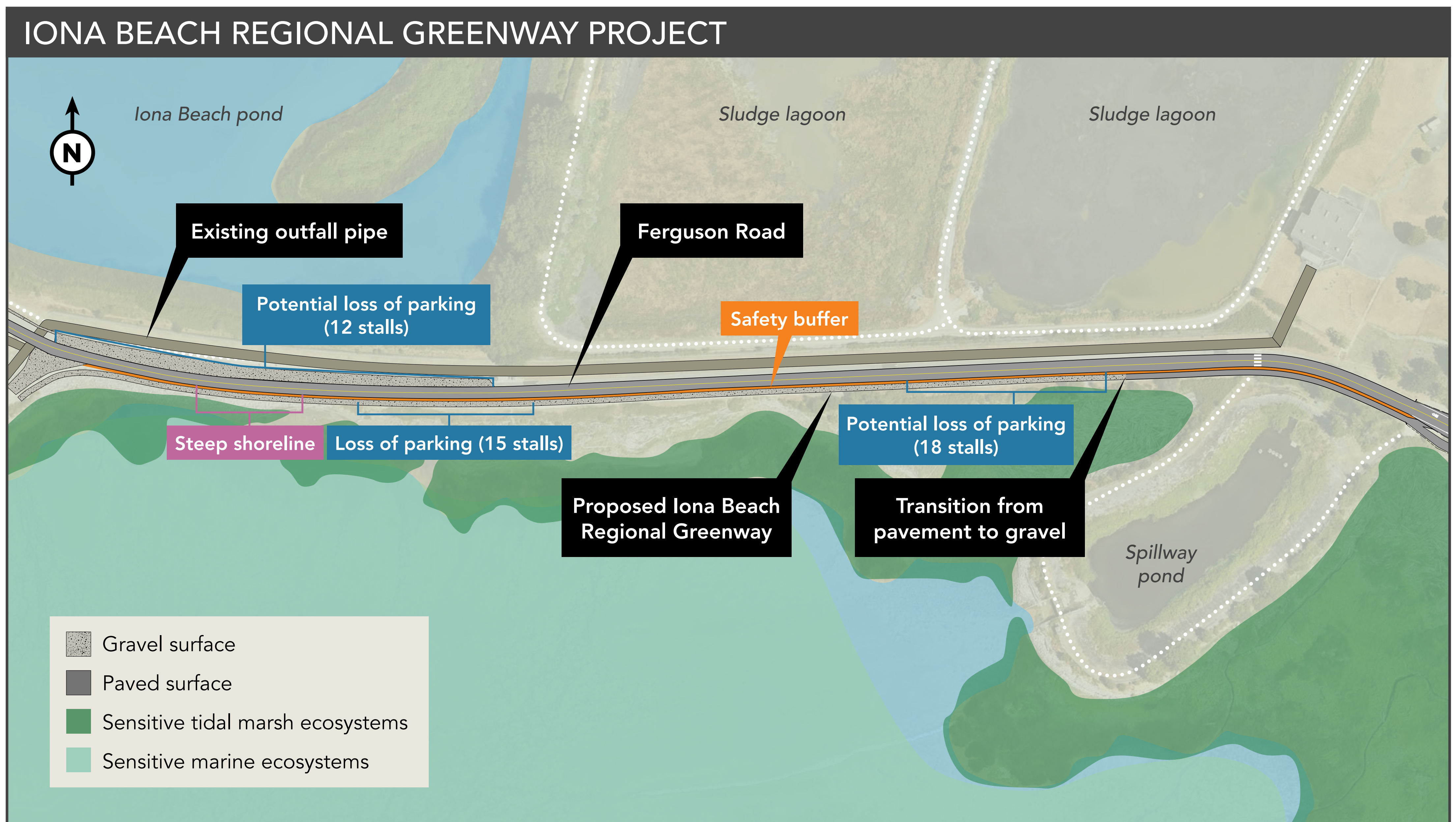
Metro Vancouver is improving the Iona Island Causeway to provide safer access to Iona Island during construction and ensure materials are efficiently delivered to site.



Iona Island Wastewater Treatment Plant Projects

Proposed Iona Beach Regional Greenway

Metro Vancouver is constructing a greenway to provide safe access for non-motorized visitors—such as cyclists or pedestrians—to Iona Beach Regional Park.



Safety Buffer

A 0.6 m safety buffer will be built between the road and greenway to ensure user safety and prevent vehicles from parking on the greenway.

Loss of Parking (Approximately 15 Stalls)

There is limited space between the outfall pipe that is essential infrastructure and the shoreline. To protect the environment and create a safe greenway, the existing gravel parking in some locations will be reduced.

Pavement Transitions to Gravel

The greenway transitions from pavement to gravel to slow the movement of storm water before it gets to the foreshore. Slowing the storm water will help to prevent shoreline erosion and protect sensitive ecosystems.

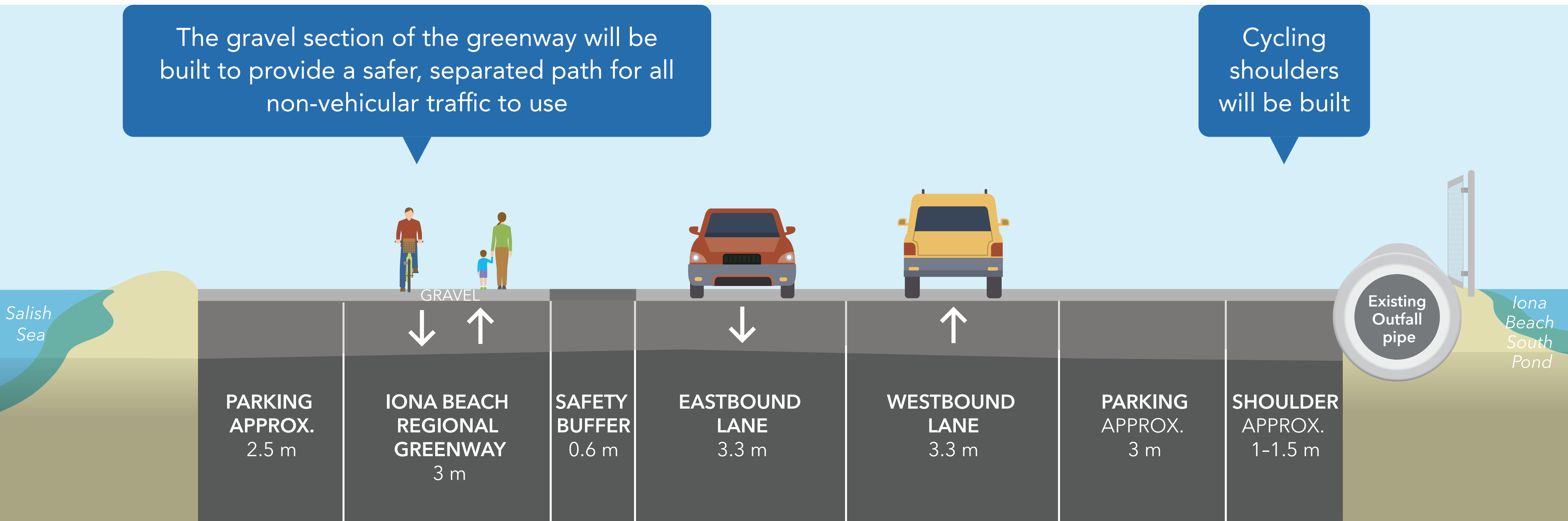
Changes in Greenway Width

To ensure that sensitive ecosystems and shorebird habitat is protected in a constrained area, the width of the greenway will taper from 4 m along the causeway to 3 m. Locations of sensitive ecosystems, limited space, and proximity to the steep shoreline informed the design.

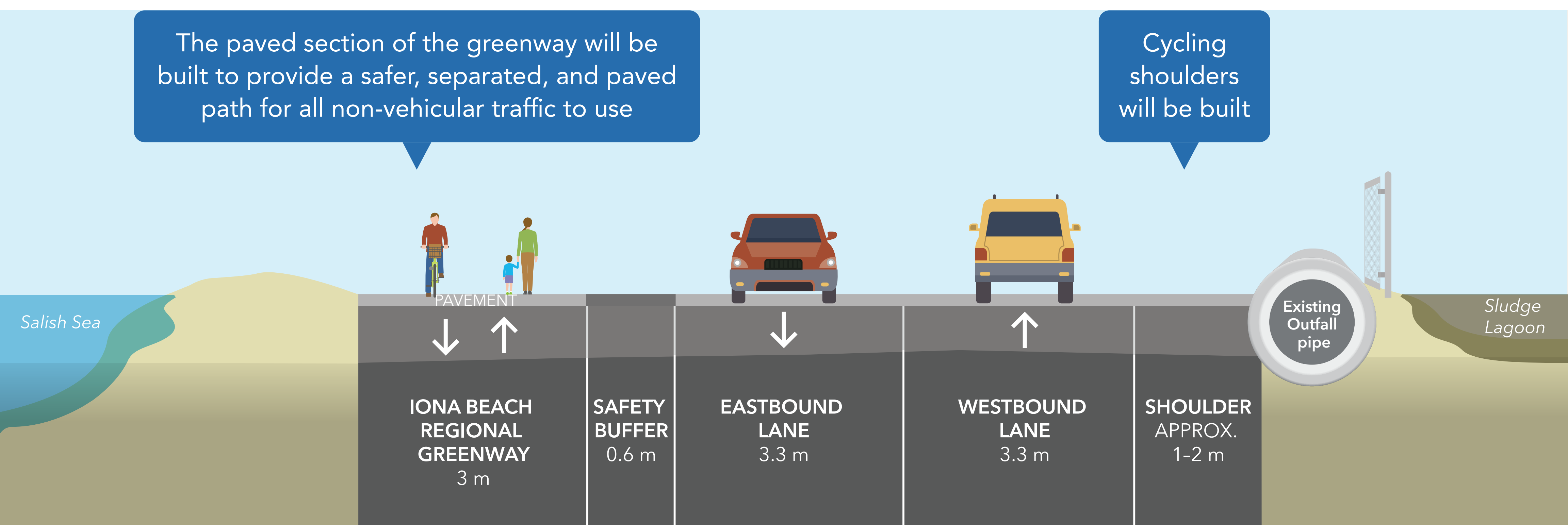
Iona Island Wastewater Treatment Plant Projects

Proposed Iona Beach Regional Greenway

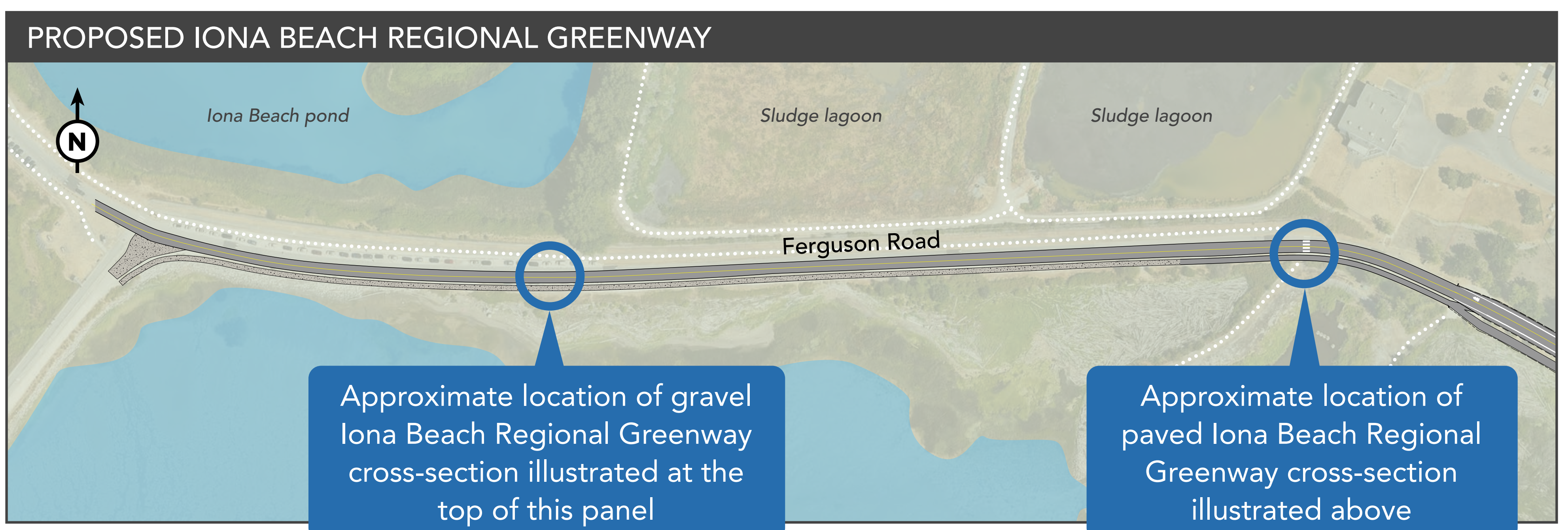
Metro Vancouver is constructing a greenway to provide safe access for non-motorized visitors—such as cyclists or pedestrians—to Iona Beach Regional Park.



Artist's rendering of the gravel greenway looking east (intended to demonstrate road dedication). Variables are for illustrative purposes only.



Artist's rendering of the paved greenway looking east (intended to demonstrate road dedication). Variables are for illustrative purposes only.



Iona Island Wastewater Treatment Plant Projects

Iona Beach Regional Greenway

Metro Vancouver is constructing a greenway to provide safe access for non-motorized visitors—such as cyclists or pedestrians—to Iona Beach Regional Park.



Metro Vancouver’s Regional Greenways 2050 plan describes the region’s shared vision for a network of recreational multi-use paths for cycling and walking that connects residents to large parks, protected natural areas, and communities to support regional livability.

Metro Vancouver is building the Iona Beach Regional Greenway to connect Iona Island to the regional greenway network. The greenway will provide a safer, separated route for all non-vehicular traffic to access Iona Island.

The proposed greenway is in line with the regional plan’s recommendations to be 3 - 4 m wide with a gravel or paved surface. The design aims to encourage safe use of the greenway by combining different features recommended by the plan.



Artist’s rendering of current conditions on the Iona Island Causeway. For illustrative purposes only.