



*Legal and Legislative Services Department
Tel. 604-432-6200 Fax 604-436-6707*

WASTE DISCHARGE PERMIT
No. SC-100054-FSA
(the "Permit")

Under the provisions of the
Greater Vancouver Sewerage & Drainage District Sewer Use Bylaw No. 299, 2007 (as amended)
(the "Bylaw")

Stella Jones Inc.
(the "Permittee")

is authorized to discharge Wastewater to Sewer from
a wood preservation operation located at
25 Braid Street, New Westminster, BC

This Permit has been issued under the terms and conditions prescribed in the attached
Schedules A, B, C, D and E for discharge sources and works existing or planned on
October 9, 2014

All previous versions of this Waste Discharge Permit are hereby rescinded and rendered null and void.

Issued: January 31, 1995
Amended: October 09, 2014


Grant McGillivray
Deputy Sewage Control Manager

SCHEDULE A

This Schedule sets out requirements for the quantity and quality of the discharge to Sewer.

1. AUTHORIZED RATE OF DISCHARGE

The Permittee shall not exceed the following:

Sample Point: 1

- Maximum daily discharge flow rate: **400.00 m³/day**
- Maximum instantaneous peak flow rate: **5.78 L/second**
- Wet Weather Conditions: The Permittee shall monitor the weather forecast for the Vancouver International Airport on a daily basis and on a day in which the rainfall forecast exceeds 15 mm the Permittee should detain the discharge in on-site storage as long as possible until the on-site storage is exhausted.

2. AUTHORIZED DISCHARGE CRITERIA

- a) The Permittee shall not discharge Restricted Waste or other Waste, as defined in the Bylaw, including but not limited to the following (regardless of sample type):

Parameter	Authorized Limit	Notes
pH	5.5 - 10.5 pH Units	
Total Suspended Solids	600 mg/L	
Oil & Grease Hydrocarbon	15 mg/L	
Phenols	1 mg/L	
Polycyclic Aromatic Hydrocarbons	0.05 mg/L	

- b) The Permittee shall not discharge Restricted Waste or other Waste, as defined in the Bylaw, with the following exceptions (regardless of sample type):

Parameter	Authorized Limit	Notes
Chlorophenols	0.01 mg/L	

- c) The Permittee shall not discharge Prohibited Waste, Storm Water or Uncontaminated Water, as defined in the bylaw with the exception of storm water from the tank farm containment and the pentachlorophenol treated wood storage areas.

Issued: January 31, 1995
 Amended: October 09, 2014


 Grant McGillivray
 Deputy Sewage Control Manager

Waste Discharge Permit No. SC-100054-FSA

SCHEDULE A

- d) The Permittee shall not discharge Hazardous Waste, or effluent from the treatment of Hazardous Waste which exceeds the Effluent Standards for Hazardous Waste Facilities, as stipulated in Schedule 1.2, Column 3, of the BC Environmental Management Act Hazardous Waste Regulation.

Issued: January 31, 1995
Amended: October 09, 2014


Grant McGillivray
Deputy Sewage Control Manager

Waste Discharge Permit No. SC-100054-FSA

SCHEDULE B

This Schedule sets out requirements and locations for the approved sample points, waste sources, and works and procedures to treat and/or control the discharges to Sewer.

1. SAMPLE POINTS, WASTE SOURCES, WORKS & PROCEDURES

SAMPLE POINT: 1

This sample point is considered to be a point of discharge to Sewer. The approved sample point location is described and is illustrated in the photo(s) below.

Description: Sample point is located along the north wall inside the boiler house building and labelled as "Discharge Sample Port".

Source: All Plant Sources

Type: Continuous

Works and Procedures	Completion Date
Continuous flow monitoring and recording	Completed
Good operating practices	Completed

Source: Boiler Blowdown

Type: Continuous

Works and Procedures	Completion Date
Good operating practices	Completed

Issued: January 31, 1995
Amended: October 09, 2014


Grant McGillivray

Deputy Sewage Control Manager

Waste Discharge Permit No. SC-100054-FSA

GREATER VANCOUVER SEWERAGE & DRAINAGE DISTRICT

SCHEDULE B

Source: PCP Treated Wood Storage Area

Contaminated storm water from the pentachlorophenol treated wood storage area

Type: Continuous

Works and Procedures	Completion Date
Collection system	Completed
Storm water sand filtration	Completed
Retention pond	Completed
Storm water flocculation and oxidation tanks	Completed
Sand filtration	Completed
Activated carbon filters	Completed

Source: Tank Farm Containment Area

Contaminated storm water from the tank farm containment area

Type: Continuous

Works and Procedures	Completion Date
Collection system	Completed
Retention pond	Completed
Sand filtration	Completed
Activated carbon filters	Completed
Continuous pH adjustment	Completed
Continuous pH monitoring and recording	Completed
Good operating practices	Completed

Issued: January 31, 1995
Amended: October 09, 2014


Grant McGillivray
Deputy Sewage Control Manager

Waste Discharge Permit No. SC-100054-FSA

GREATER VANCOUVER SEWERAGE & DRAINAGE DISTRICT

SCHEDULE B

Source: Vacuum Boil-out from 1, 2, 3 & 5 Pressure Vessels

Type: Continuous

Works and Procedures	Completion Date
Collection system	Completed
Oil water separator	Completed
Process water flocculation and oxidation tanks	Completed
Sand filtration	Completed
Activated carbon filters	Completed
Continuous pH adjustment	Completed
Continuous pH monitoring and recording	Completed
Good operating practices	Completed

Issued: January 31, 1995
Amended: October 09, 2014

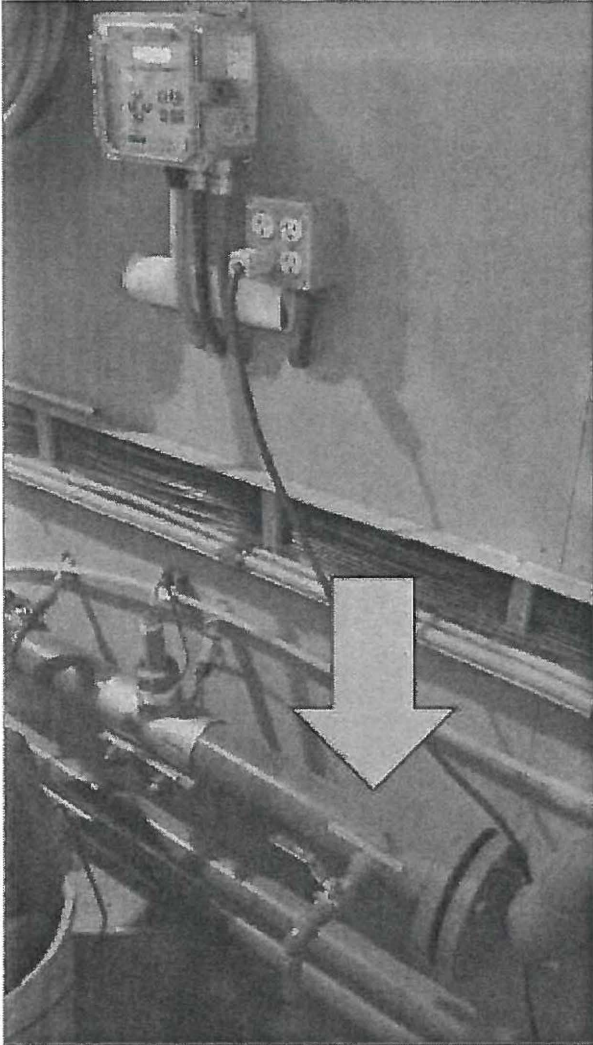


Grant McGillivray
Deputy Sewage Control Manager

Waste Discharge Permit No. SC-100054-FSA

SCHEDULE B

Photograph of Sample Point 1:



Issued: January 31, 1995
Amended: October 09, 2014

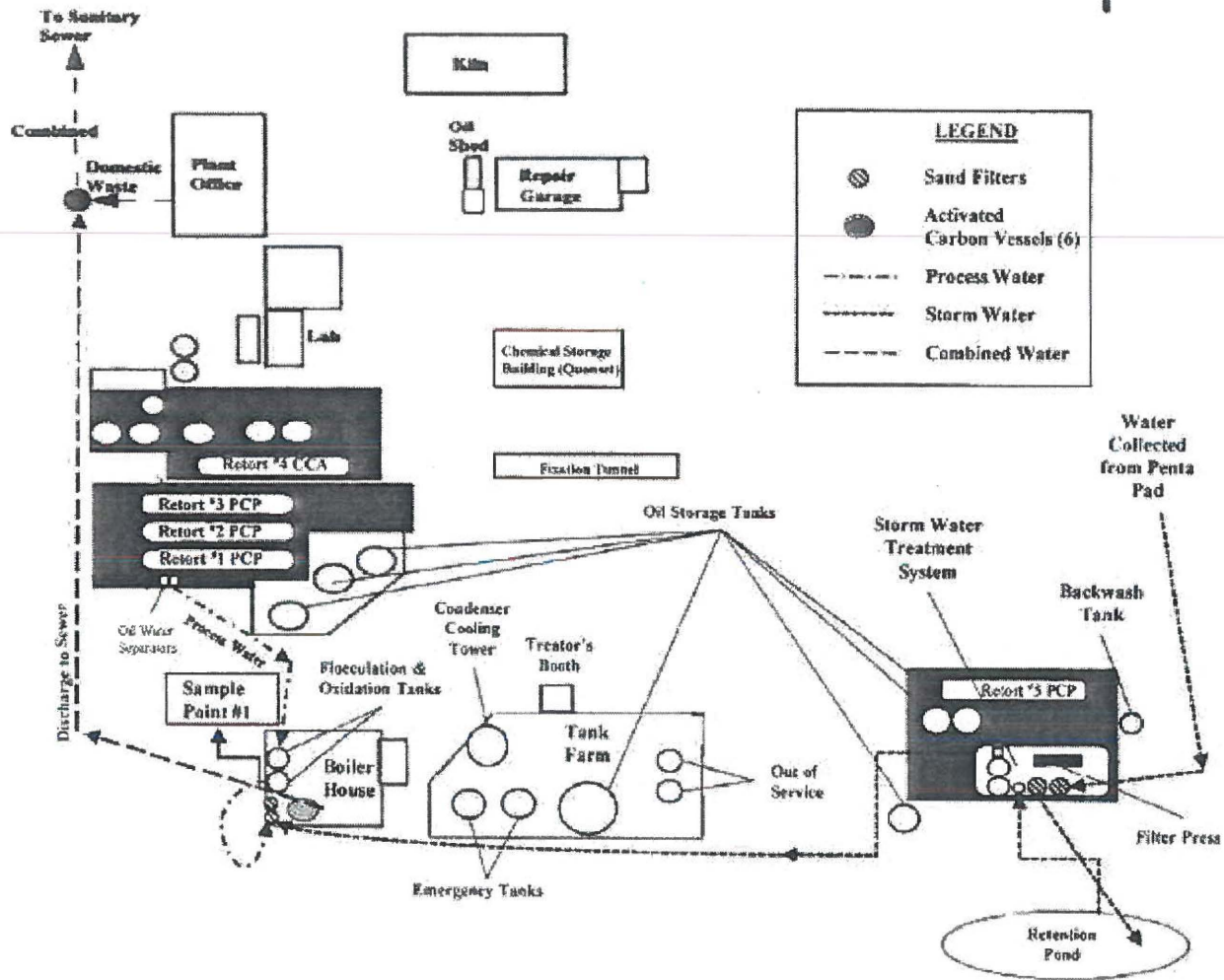
Waste Discharge Permit No. SC-100054-FSA


Grant McGillivray
Deputy Sewage Control Manager

SCHEDULE B

2. SITE PLAN(S)

Waste Water Site Plan

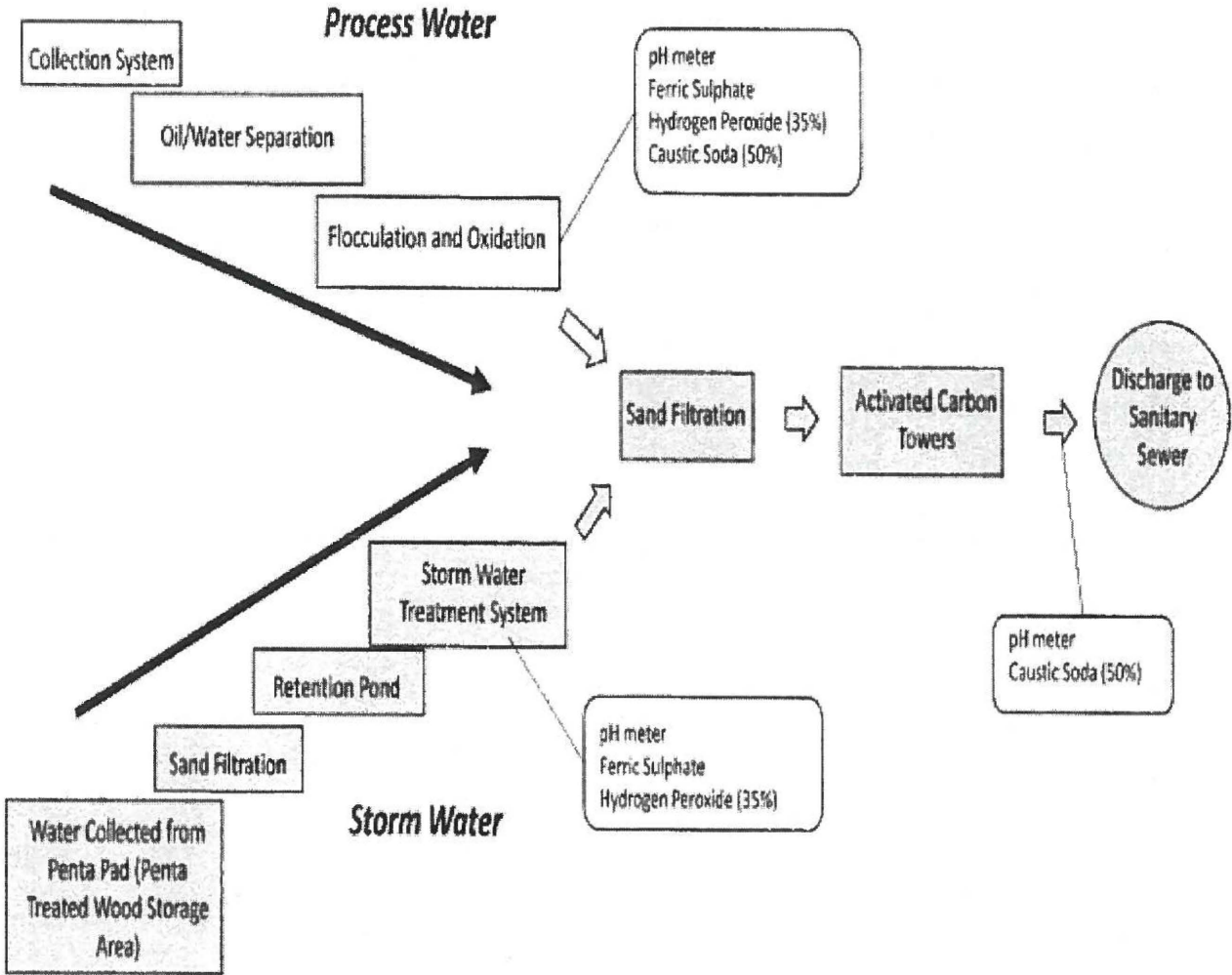


Issued: January 31, 1995
 Amended: October 09, 2014

[Signature]
 Grant McGillivray
 Deputy Sewage Control Manager

Waste Discharge Permit No. SC-100054-FSA

SCHEDULE B



Issued: January 31, 1995
Amended: October 09, 2014

Waste Discharge Permit No. SC-100054-FSA


Grant McGillivray
Deputy Sewage Control Manager

SCHEDULE C

This Schedule sets out standard conditions and requirements for emergency procedures.

1. STANDARD CONDITIONS

- a) Except as otherwise provided in this Permit, all terms, conditions and definitions stipulated in the Bylaw shall apply to this Permit.
- b) Pursuant to the Bylaw, the Sewage Control Manager (the Manager) may amend the terms and conditions of this Permit.
- c) All records required by this permit shall be kept available for a minimum period of one year.

2. WORKS AND PROCEDURES

- a) All authorized works, procedures and requirements shall be employed at all times during any discharge to sewer. As applicable, all such works shall be inspected and calibrated regularly and maintained in good working condition.
- b) The Manager may require that additional works be installed if the existing works do not provide an acceptable level of treatment. The Manager must authorize new works or alterations to existing works. The Manager must authorize new waste sources.

3. NOTIFICATION PROCEDURES

The Permittee shall immediately report to Metro Vancouver at 604-643-8488 (24 hours):

- a) Spills with the potential to be discharged to the Sanitary Sewer.
- b) Failure of authorized works or conditions and/or failure to carry out authorized procedures that will or have the potential to result in a Permit limit being exceeded.
- c) Discharge pH less than 2 or greater than 12.5.

4. BY-PASSES

The discharge of Wastes that by-pass any authorized works or is not in accordance with procedures designated by the Permit is prohibited, unless prior authorization of the Manager is obtained.

5. DISCHARGE MONITORING

- a) All sampling, measurements, tests and analyses of waste discharges shall be carried out in accordance with the latest edition of "Standard Methods for the Examination of Water and Wastewater" published by the American Public Health Association, or an alternate method authorized by the Manager. With the exception of pH measurements, all samples shall be analyzed by an independent laboratory unless otherwise authorized by the Manager. The pH shall be measured immediately using Standard Method 4500-H+.
- b) Laboratories used by the Permittee must be accredited by the Canadian Association for Laboratory Accreditation.
- c) Any changes in method or location of monitoring must be authorized by the Manager.
- d) Additional monitoring and/or reporting shall be undertaken by the Permittee when required by the Manager.

Issued: January 31, 1995
Amended: October 09, 2014


Grant McGillivray

Deputy Sewage Control Manager

Waste Discharge Permit No. SC-100054-FSA

SCHEDULE D

This Schedule sets out the requirements for the monitoring of the discharge to Sewer.

DISCHARGE SAMPLING AND ANALYSES

1. FLOW MEASUREMENTS

The Permittee shall measure or estimate the discharge flow to sanitary sewer during each month of operation using the method(s) authorized in Schedule B and record for reporting purposes the following:

- Total discharge volume (m³) for the month for sample point(s) 1
- Number of days of discharge to sewer during the month for sample point(s) 1
- Maximum daily discharge flow rate (m³/day) during the month for sample point(s) 1
- Maximum instantaneous flow rate (L/second) during the month for sample point(s) 1

2. SAMPLING PROGRAM

Continuous Discharge Sampling:

The Permittee shall record for reporting purposes for each sample the following:

- Sample date
- Sample collection time or sample collection start and stop time(s) if applicable
- Total daily discharge volume (m³) on the date of sampling

SAMPLE POINT: 1

Continuous Discharges:

On one normal operating day once per month collect 1 set of grab samples and analyze for:

- Total Suspended Solids
- Oil & Grease Hydrocarbon
- Chlorophenols
- Phenols

On one normal operating day once per month collect 2 sets of grab samples at four hour intervals and analyze for:

- pH

Issued: January 31, 1995
Amended: October 09, 2014



Grant McGivray

Deputy Sewage Control Manager

Waste Discharge Permit No. SC-100054-FSA

SCHEDULE D

Grab sample pH analysis must be conducted immediately upon sampling.

If composite sampling is specified, grab samples shall be taken during the period of composite sampling unless noted otherwise in this Schedule.

Unless otherwise specified, all samples should be taken during normal operations.

Issued: January 31, 1995
Amended: October 09, 2014


Grant McGillivray
Deputy Sewage Control Manager

Waste Discharge Permit No. SC-100054-FSA

SCHEDULE E

This Schedule sets out reporting requirements for this Permit.

1. REPORTING REQUIREMENTS

By October 31, 2014 and quarterly thereafter for the term of this permit:

The Permittee shall submit a report detailing the results of the discharge sampling and analyses program, as specified, for the previous calendar quarter including lab reports. This information shall be submitted electronically using the supplied password-enabled web based application.

Should a violation of any term or condition of the Permit be noted, the report shall include a summary of the investigation into the cause of the violation and the corrective actions taken or proposed to prevent future violations. This does not preclude the immediate notification requirements specified in Schedule C.

Issued: January 31, 1995
Amended: October 09, 2014



Grant McGillivray

Deputy Sewage Control Manager

Waste Discharge Permit No. SC-100054-FSA

