

**METRO VANCOUVER REGIONAL DISTRICT
ZERO WASTE COMMITTEE**

MEETING

Thursday, October 3, 2024

1:00 pm

28th Floor Committee room, 4515 Central Boulevard, Burnaby, British Columbia

Webstream available at <https://www.metrovancover.org>

A G E N D A¹

A. ADOPTION OF THE AGENDA

1. October 3, 2024 Meeting Agenda

That the Zero Waste Committee adopt the agenda for its meeting scheduled for October 3, 2024, as circulated.

B. ADOPTION OF THE MINUTES

1. September 5, 2024 Meeting Minutes

That the Zero Waste Committee adopt the minutes of its meeting held September 5, 2024, as circulated.

pg.4

C. DELEGATIONS

D. INVITED PRESENTATIONS

E. REPORTS FROM COMMITTEE OR CHIEF ADMINISTRATIVE OFFICER

1. 2025 - 2029 Financial Plan Overview

Verbal Update

Designated Speakers: Jerry W. Dobrovolny, Chief Administrative Officer and Harji Varn, General Manager, Financial Services/Chief Financial Officer

pg. 8

2. 2025 - 2029 Financial Plan – Solid Waste Services

That the Zero Waste Committee endorse the 2025 - 2029 Financial Plan for Solid Waste Services as presented in the report dated September 24, 2024, titled “2025 - 2029 Financial Plan – Solid Waste Services”, and forward it to the Metro Vancouver Board Budget Workshop on October 16, 2024, for consideration.

pg. 22

¹ Note: Recommendation is shown under each item, where applicable.

- 3. GVS&DD Tipping Fee and Solid Waste Disposal Regulation Amendment Bylaw No. 383, 2024 - Amends Bylaw 379, 2024** pg. 46
- That the GVS&DD Board:
- a) approve the following amendments to the Tipping Fee Bylaw effective January 1, 2025:
 - I. increase garbage tipping fees by \$7 per tonne for all weight categories;
 - II. increase the generator levy by \$3 per tonne; and
 - III. other rate changes and revisions as described in the report dated September 24, 2024, titled “GVS&DD Tipping fee and Solid Waste Disposal Regulation Amendment Bylaw No. 383, 2024 – Amends Bylaw 379, 2024”;
 - b) give first, second and third reading to *Greater Vancouver Sewerage and Drainage District Tipping Fee and Solid Waste Disposal Regulation Amendment Bylaw No. 383, 2024*; and
 - c) adopt *Greater Vancouver Sewerage and Drainage District Tipping Fee and Solid Waste Disposal Regulation Amendment Bylaw No. 383, 2024*.
- 4. 2024 Single-Use Item Reduction "What's Your Superhabit?" Campaign Results** pg. 79
- That the Zero Waste Committee receive for information the report dated September 23, 2024, titled, “2024 Single-Use Item Reduction ‘What’s Your Superhabit?’ Campaign Results”.
- 5. Manager’s Report** pg. 87
- That the Zero Waste Committee receive for information the report dated September 25, 2024, titled “Manager’s Report”.

F. INFORMATION ITEMS

G. OTHER BUSINESS

H. RESOLUTION TO CLOSE MEETING

Note: The Committee must state by resolution the basis under section 90 of the Community Charter on which the meeting is being closed. If a member wishes to add an item, the basis must be included below.

This matter is being presented at a closed meeting pursuant to Section 226 (1) (a) of the *Local Government Act* and the *Community Charter* provisions as follows:

90 (1) A part of a council meeting may be closed to the public if the subject matter being considered relates to or is one or more of the following:

- (k) negotiations and related discussions respecting the proposed provision of a municipal service that are at their preliminary stages and that, in the view of

the council, could reasonably be expected to harm the interests of the municipality if they were held in public.

I. ADJOURNMENT

That the Zero Waste Committee adjourn its meeting of October 3, 2024.

Membership:

Kirby-Yung, Sarah (C) – Vancouver

Hodge, Craig (VC) – Coquitlam

Calendino, Pietro – Burnaby

Darling, Steve – Port Coquitlam

Ferguson, Steve – Langley Township

Fry, Pete – Vancouver

Muri, Lisa – North Vancouver District

Wallace, Rosemary – Langley City

Weverink, Paul – Anmore

**METRO VANCOUVER REGIONAL DISTRICT
ZERO WASTE COMMITTEE**

Minutes of the Regular Meeting of the Metro Vancouver Regional District (MVRD) Zero Waste Committee held at 1:01 pm on Thursday, September 5, 2024 in the 28th Floor Committee Room, 4515 Central Boulevard, Burnaby, British Columbia.

MEMBERS PRESENT:

- Chair, Director Sarah Kirby-Yung, Vancouver (arrived at 1:15pm)
- Vice Chair, Director Craig Hodge, Coquitlam
- Director Pietro Calendino, Burnaby*
- Councillor Steve Darling, Port Coquitlam
- Director Steve Ferguson, Langley Township
- Councillor Pete Fry, Vancouver*
- Director Lisa Muri, North Vancouver District*
- Councillor Rosemary Wallace, Langley
- Councillor Paul Weverink, Anmore

*denotes electronic meeting participation as authorized by the *Procedure Bylaw*

STAFF PRESENT:

- Paul Henderson, General Manager, Solid Waste Services
- Jacque Killawee, Deputy Corporate Officer, Board and Information Services
- Chris Allan, Director, Solid Waste Operations

A. ADOPTION OF THE AGENDA

1. September 5, 2024 Meeting Agenda

It was MOVED and SECONDED

That the Zero Waste Committee adopt the agenda for its meeting scheduled for September 5, 2024, as circulated.

CARRIED

B. ADOPTION OF THE MINUTES

1. July 4, 2024 Meeting Minutes

It was MOVED and SECONDED

That the Zero Waste Committee adopt the minutes of its meeting held July 4, 2024, as circulated.

CARRIED

C. DELEGATIONS

No Items Presented

D. INVITED PRESENTATIONS

No Items Presented

E. REPORTS FROM COMMITTEE OR CHIEF ADMINISTRATIVE OFFICER

1. 2022 Integrated Solid Waste & Resource Management Plan Biennial Report Feedback

Report dated August 27, 2024, from Terry Fulton, Senior Project Engineer, Solid Waste Services, providing the committee the stakeholder feedback received on the draft 2022 Biennial Report on the Integrated Solid Waste and Resource Management Plan.

Paul Henderson, General Manager, Solid Waste Services introduced the report titled “2022 Integrated Solid Waste & Resource Management Plan Biennial Report Feedback” and in response to Committee members comments regarding the importance of having factual information on the Waste-to-Energy Facility available to the public, noted that staff will send a response to the Zero Waste Council of Canada’s comments regarding the Waste-to-Energy Facility. The letter would be shared with the Committee and the Board.

1:15 pm Chair Kirby-Yung arrived at the meeting.

It was MOVED and SECONDED

That the Zero Waste Committee receive for information the report dated August 27, 2024, titled “2022 Integrated Solid Waste & Resource Management Plan Biennial Report Feedback”.

CARRIED

2. Waste-to-Energy Facility 2023 Financial Update

Report dated August 28, 2024, from Brent Kirkpatrick, Lead Senior Engineer, Solid Waste Operations, Solid Waste Services, providing the committee with 2023 annual financial update for the Metro Vancouver Waste-to-Energy Facility located in Burnaby.

Chris Allan, Director, Solid Waste Operations, provided the Zero Waste Committee with a presentation titled “Waste-to-Energy Facility 2023 Financial Update” noting the changes in 2023 due to a generator failure and that the cost remains comparable with the Vancouver Landfill and approximately half the cost contingency disposal.

It was MOVED and SECONDED

That the Zero Waste Committee receive for information the report dated August 28, 2024, titled “Waste-to-Energy Facility 2023 Financial Update”.

CARRIED

3. Appointment of Enforcement Officers

Report dated August 28, 2024, from Nicole MacDonald, Program Manager, Solid Waste Regulation, Environmental Regulation and Enforcement, requesting that the GVS&DD Board update staff appointments as Greater Vancouver Sewerage and Drainage District (GVS&DD) Board-designated officers under the *Greater Vancouver Sewerage and Drainage District Municipal Solid Waste and Recyclable Material Regulatory Bylaw No. 181, 1996*, the *Environmental Management Act*, and the *Offence Act*.

It was MOVED and SECONDED

That the GVS&DD Board:

- a) pursuant to the *Greater Vancouver Sewerage and Drainage District Municipal Solid Waste and Recyclable Material Regulatory Bylaw No. 181, 1996* and the *Environmental Management Act* appoint Metro Vancouver employees Loretta Tang and Sean Hronksy as officers; and
- b) pursuant to Section 28 of the *Offence Act* for the purpose of serving summons for alleged violations under the *Greater Vancouver Sewerage and Drainage District Municipal Solid Waste and Recyclable Material Regulatory Bylaw No. 181, 1996*, appoint Metro Vancouver employees Loretta Tang and Sean Hronsky.

CARRIED

4. Expanding Product Categories in Extended Producer Responsibility

Report dated August 27, 2024, from Andrew Doi, Environmental Planner, Solid Waste Services, informing the committee and the GVS&DD Board about delays announced during the summer to the *Advancing Recycling in B.C. Extended Producer Responsibility Five-Year Action Plan 2021-2026* and requesting that the GVS&DD Board write a letter to the B.C. Government to advocate for action in the areas delayed and reiterating the costs borne by local governments to manage these materials that could be addresses through extended producer responsibility.

It was MOVED and SECONDED

That the Greater Vancouver Sewerage & Drainage District Board write to the Minister of Environment and Climate Change Strategy, requesting that updates to the *B.C. Recycling Regulation* be expedited to include mattresses, compressed canisters, fire extinguishers, medical sharps, and other products to ensure these materials can be included in the provincial extended producer responsibility program as soon as possible.

CARRIED

5. Manager's Report

Report dated August 29, 2024, from Paul Henderson, General Manager, Solid Waste Services providing information and updates from the departments work including

the per capita textile disposal trends for 2018-2023; an update on the *Solid Waste Management Plan* public engagement idea generation phase that will begin in fall 2024. The report notes that the first annual *Smart Waste Program Report* is now available on Metro Vancouver’s website; and the BC Utilities Commission has granted an exemption to the GVS&DD from part 3 of the Utilities Commission Act for sale of heat from the Waste-to-Energy Facility to River District Energy.

Paul Henderson walked the committee through the manager’s report and additionally drew the attention of the committee to a podium commissioned by Metro Vancouver for the 2024 Pacific National Exhibition (PNE) created by ChopValue. The podium is composed of used chop sticks diverted from the waste stream in Vancouver restaurants. He noted that ChopValue is a local success story that has begun franchising its business worldwide.

It was MOVED and SECONDED

That the Zero Waste Committee receive for information the report dated August 29, 2024, titled “Manager’s Report”.

CARRIED

F. INFORMATION ITEMS
No Items Presented

G. OTHER BUSINESS
No Items Presented

H. RESOLUTION TO CLOSE MEETING
No Items Presented

I. ADJOURNMENT
That the Zero Waste Committee adjourn its meeting of September 5, 2024.

(Time: 1.40 pm)

Jacque Killawee
Deputy Corporate Officer

Sarah Kirby-Yung,
Chair

70332673

To: Zero Waste Committee

From: Jerry Dobrovlny, Commissioner/Chief Administrative Officer
Harji Varn, General Manager, Financial Services/Chief Financial Officer

Date: September 26, 2024 Meeting Date: October 3, 2024

Subject: **2025 - 2029 Financial Plan Overview**

This presentation introduces a high-level overview of the Metro Vancouver 2025-2029 budget.

ATTACHMENTS

1. 2025 - 2029 Financial Plan Overview Presentation

70907429



Metro Vancouver Region

2025 – 2029 Financial Plan Overview

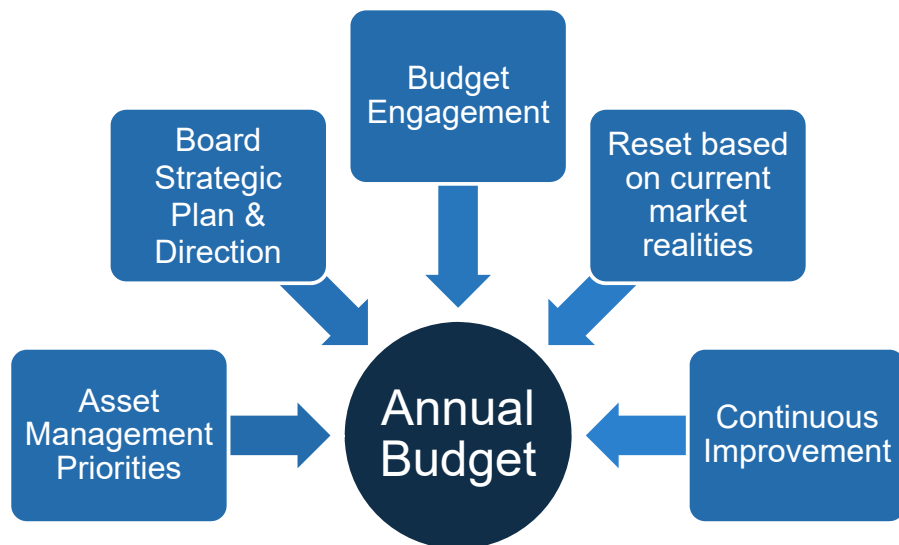
Jerry W. Dobrovolny, P. Eng, MBA
Commissioner / Chief Administrative Officer

Harji Varn
GM Financial Services / Chief Finance Officer

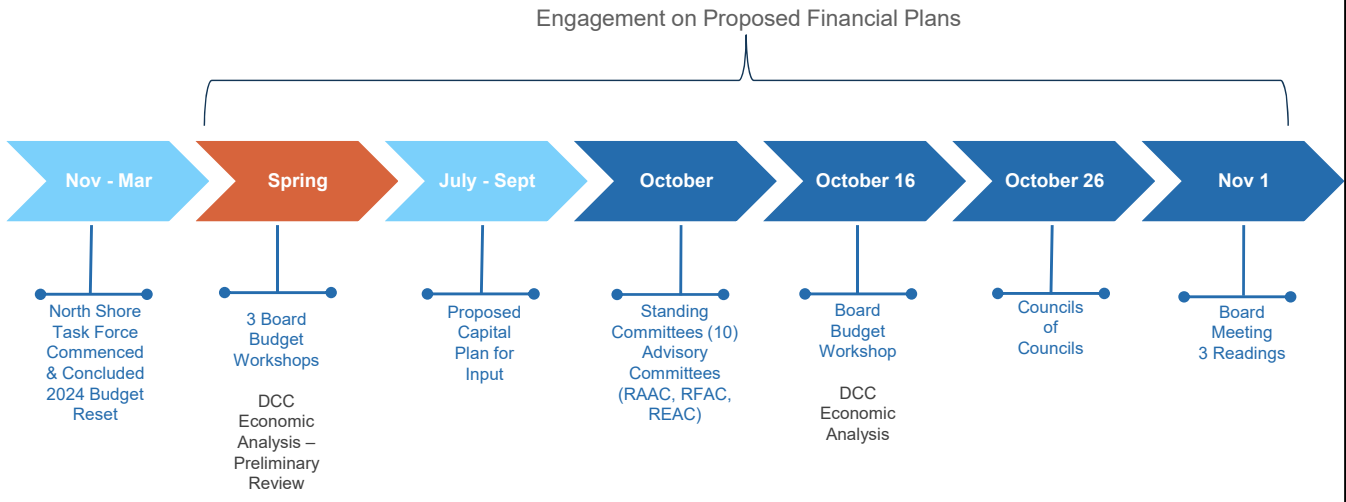


70966945

METRO VANCOUVER BUDGET APPROACH



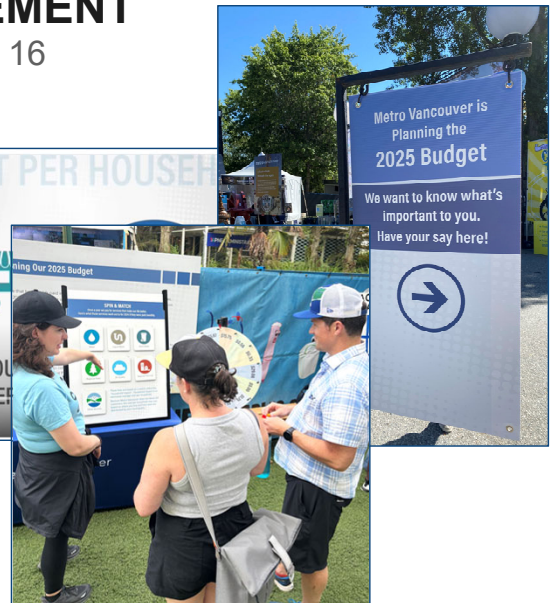
2025 BUDGET CYCLE TIMELINE



COMMUNICATIONS AND ENGAGEMENT

Public Engagement Period, July 31 – September 16

- 291,956+ budget video views
- 14 days at PNE (90,000 showcase visitors)
- 8,483 PNE budget game players
- 1,453 budget webpage visits
- 422 online survey responses
- 79 paper survey responses
- 36 promotional and educational posts on social



COMMUNICATIONS AND ENGAGEMENT

Overall Communications / Member Engagement

- Budget webpage with video
- Budget Overview one pager
- MetroUpdate newsletter article
- Live stream Committee and Board meetings
- Regional Advisory Committees
- Council of Council meetings
- Budget communications throughout the year

2024 Budget at a Glance

- \$2.4 billion: Total combined expenditures planned for 2024
- \$1.226 billion for operating
- \$1.173 billion for capital
- \$698: Approximate average household cost ("household impact") for all regional services in 2024 (2% increase)
- Less than previously projected 14.7% increase of \$111 for 2024
- Over four years, increase reduced to only 5% increase
- 87% increase in household impact over 2023 (Water \$12, Liquid Waste \$10, Solid Waste \$1, MWD \$8)
- Major projects and initiatives include: Cogitlam Water Main and Supply Projects, wastewater treatment plant upgrades (Iona Island, North Shore, Northeast Langley, Arnic), affordable housing projects, parks expansion, reconstruction
- New development cost charge rates will support a principle that growth pays for growth

Service	Per Year	Per Month
Regional Planning	\$4	\$0.33
Air Quality Management	\$7	\$0.58
Regional Parks	\$60	\$5
Solid Waste Services	\$48	\$4.00
Liquid Waste Services	\$109	\$9.08

COMMITMENT TO CONTINUOUS IMPROVEMENT

- Continue culture of continuous improvement
- Continue to Monitor financial performance
- Continue to utilize data to drive decision making
- Continue to seek alternative funding strategies/sources
- Continue with long range planning and procurement strategies for multi-year programs and project delivery



CONTINUOUS IMPROVEMENT – 2024 COMPLETED OR ONGOING

Initiative	Outcomes
Cyber Resilience (CS)	<ul style="list-style-type: none"> Improve cyber security and resilience to proactively mitigate the risks posed by evolving cyber security threats
Weigh Scale Software Upgrade Implementation (SWS)	<ul style="list-style-type: none"> Range of new features: license plate readers, emailing bills, real-time customer feedback; system resilience.
Refined Environmental Management System (WS)	<ul style="list-style-type: none"> Revised the review and approval process for regulatory reporting, which is freeing up time for our frontline, engineering, and legal teams

CONTINUOUS IMPROVEMENT – 2025 NEW

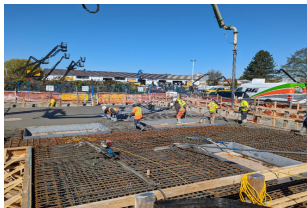
Initiative	Outcomes
Waste-to Energy District Energy (SWS)	<ul style="list-style-type: none"> Up to 70,000 tonnes GHG per year emissions reduction.
Biosolids Hauling de-carbonization (LWS)	<ul style="list-style-type: none"> Trials of low-carbon hauling vehicles (battery electric vehicles and hydrogen electric vehicles) for short to medium haul routes.
Project Quality Management (PD)	<ul style="list-style-type: none"> Consistent implementation of Project Quality Management and reduction of quality related risks. Efficiencies due to risk avoidance and streamlined processes.

MAJOR DRIVERS – CAPITAL PROGRAM

WHAT WE ARE DOING

- Long-term financial planning
- Cost estimating framework
- Reviewing scope and timing of over 300 projects
- Partnership funding

The image shows two overlapping spreadsheets. The top one is titled 'GREATER VANCOUVER WATER DISTRICT CAPITAL BUDGET AND 2024-2026 CAPITAL PLAN' and the bottom one is 'GREATER VANCOUVER SEWERAGE AND DRAINAGE DISTRICT CAPITAL BUDGET AND 2024-2026 CAPITAL PLAN'. Both tables list various projects with columns for project name, location, start year, end year, and budget amounts.



Fleetwood Reservoir Roof slab



Annacis WWTP Digesters



Widgeon Marsh Development

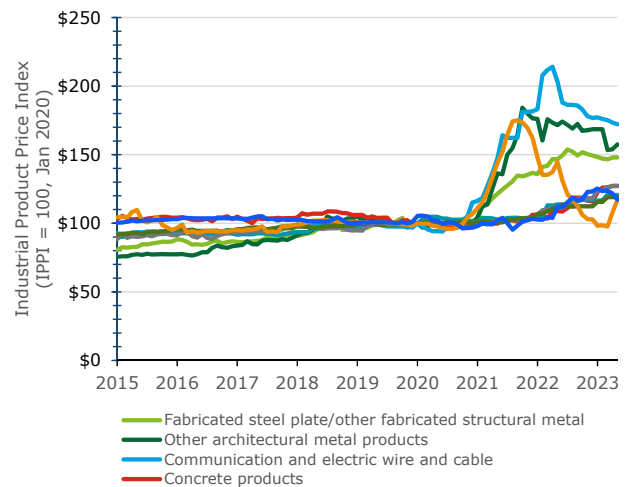


Central Surrey Recycling and Waste

MAJOR DRIVERS – INFLATION AND COST ESCALATION

WHAT WE ARE DOING

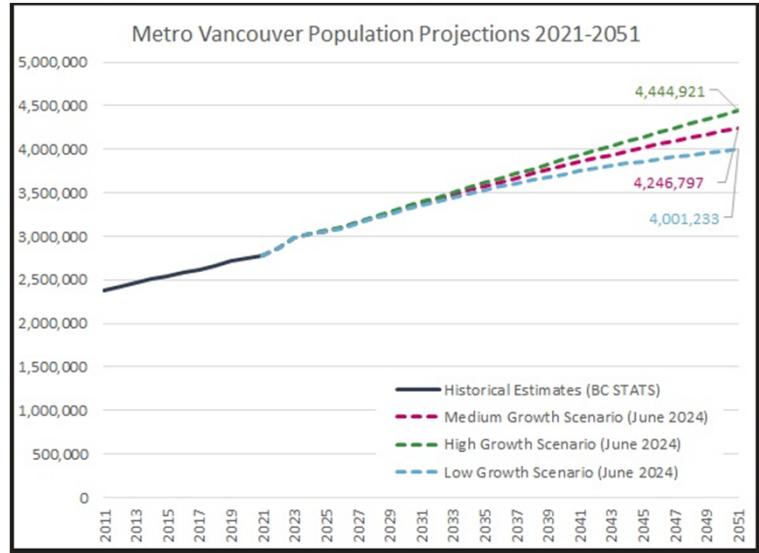
- Strengthening procurement strategies
- Examining revenue sources and partnerships
- Timing and scope of projects and programs



MAJOR DRIVERS - POPULATION GROWTH

WHAT WE ARE DOING

- Examining impacts to infrastructure
- Regular updates and review of DCCs
- Alignment with Province and member jurisdictions



MAJOR DRIVERS - CLIMATE CHANGE AND RESILIENCE

WHAT WE ARE DOING

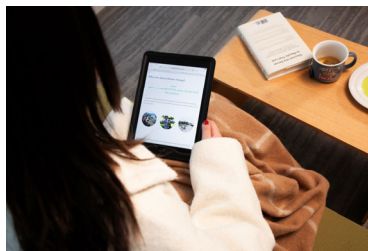
- Infrastructure resilience
- Metro 2050 Policy
- Climate action strategies and programs



King tide in West Vancouver



Minnehada fire



Climate Literacy Program

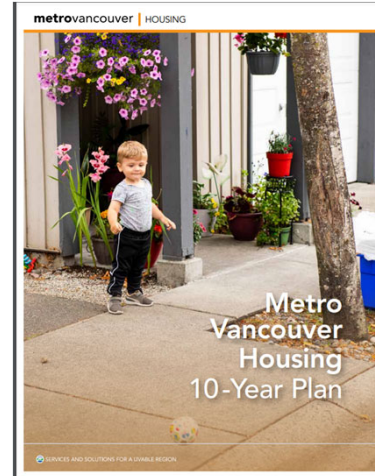


Smoky conditions in Metro Vancouver

MAJOR DRIVERS – BELOW MARKET RENTAL HOUSING

WHAT WE ARE DOING

- Metro Vancouver Housing development and renewal projects (2,100+ units underway)
- Partnerships with member jurisdictions, development community and others
- Historic funding agreement with Province; new federal program



APRIL 2023 BOARD BUDGET WORKSHOP DIRECTION

That the MVRD/MVHC/GVS&DD/GVWD Board at the April 19, 2023 Board Budget Workshop:

- a) *direct staff to proceed through the 2024 budget cycle with household impact targets as follows*
 - i. 2024 – 12%
 - ii. 2025 – 11%
 - iii. 2026 – 5%
 - iv. 2027 – 5%
- b) *direct staff to prepare the 2024–2028 Financial Plan with the following development cost charge (DCC) rate assumptions:*
 - i. *Liquid Waste Development Cost Charges moving to a 1% assist factor with interest as part of the 2024–2028 Financial Plan*
 - ii. *Water Development Cost Charges moving to a 1% assist factor with interest as part of the 2024–2028 Financial Plan; and*
 - iii. *Implementation of a Development Cost Charge for Regional Parks and move to a 1% assist factor within the 2024–2028 Financial Plan*

MARCH 2024 BOARD MEETING

- The DCC Bylaws received Provincial Inspector Approval in February 2024
- On March 22, 2024, the MVRD/ GVS&DD/ GVWD Board had 4th reading and final adoption of the 3 DCC Bylaws
- The DCC Bylaws have a 3-year phase-in January 1, 2025; January 1, 2026; and January 1, 2027

SPRING 2024 BOARD BUDGET WORKSHOPS DIRECTION

April 17 and May 17, 2024 Board Budget Workshops direction to staff was to continue with the direction from April 2023 which were to:

- Maintain the following HHI targets:
 - 2025 – 11%
 - 2026 – 5%
 - 2027 – 5%
 - 2028 – 5%
- Continue with Liquid Waste DCCs, Water DCCs, and Regional Parks DCCs to a 1% assist factor with interest as part of the financial plan

BOARD BUDGET WORKSHOP DIRECTION

May 2024 Board Budget Workshop Resolution

That the GVS&DD Board direct staff to prepare the 2025 Budget and 2025–2029 Financial Plan by allocating the \$2.8B required to complete the NSWWTP Program according to Option 3 from Table 6 in the report dated May 10, 2024, titled “2025 Budget and 5-Year Financial Plan Scenarios for Consideration.”

That the GVS&DD Board direct staff to prepare the 2025 Budget and 2025–2029 Financial Plan by allocating the \$2.8B required to complete the NSWWTP Program according to Option 4 from Table 7 in the report dated May 10, 2024, titled “2025 Budget and 5-Year Financial Plan Scenarios for Consideration.”

	2025	2026	2027	2028	2029
VSA	+\$150	-	-	-	-
NSSA	+\$118	+\$118	+\$118	+\$118	+\$118
LIWSA	+\$80	-	-	-	-
FSA	+\$90	-	-	-	-

2025–2029 FINANCIAL PLAN OVERVIEW

2025 Budget – Bottom Line

11.0%	Prior Projection for 2025
\$88	Increase for the average household in 2025 (Water: \$14, Liquid Waste: \$69, Solid Waste: \$3, MVRD: \$2)
\$884	Average annual cost for all Metro Vancouver services
9.9%	Proposed 2025 Budget
\$79	Increase for the average household in 2025 (Water: \$11, Liquid Waste: \$63, Solid Waste: \$3, MVRD: \$2)
\$875	Average annual cost for all Metro Vancouver services

OVERALL AVERAGE HOUSEHOLD IMPACT 2025–2029

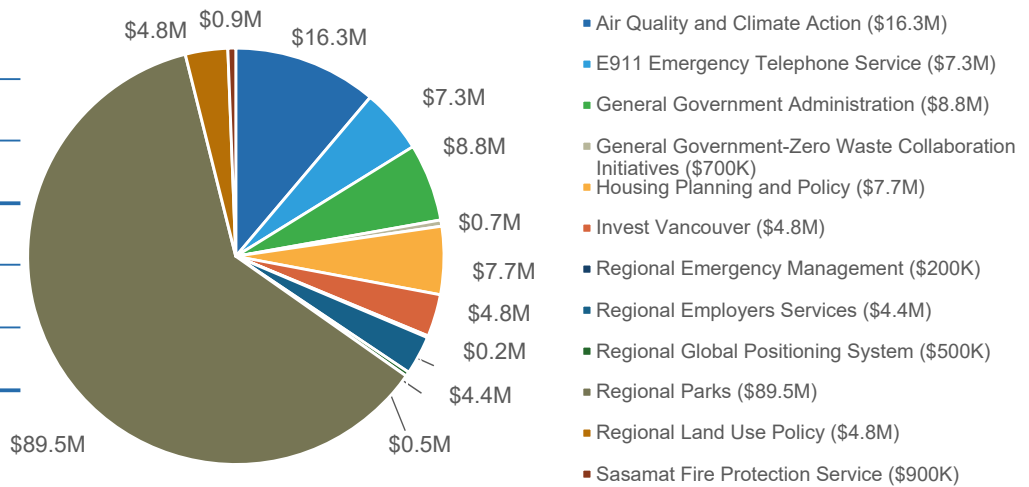
	2024	NSWWTP Amended	2025	2026	2027	2028	2029
Water Services	\$189	\$189	\$200	\$211	\$215	\$218	\$218
Liquid Waste Services	\$349	\$447	\$510	\$549	\$587	\$627	\$672
Solid Waste Services	\$68	\$68	\$71	\$74	\$78	\$82	\$86
Regional District Services	\$92	\$92	\$94	\$84	\$85	\$86	\$87
Total Household Impact	\$698	\$796	\$875	\$918	\$965	\$1,013	\$1,063
Prior Year Forecast - amended			\$884	\$933	\$981	\$1,033	

BUDGET OVERVIEW

2025 MVRD Budget

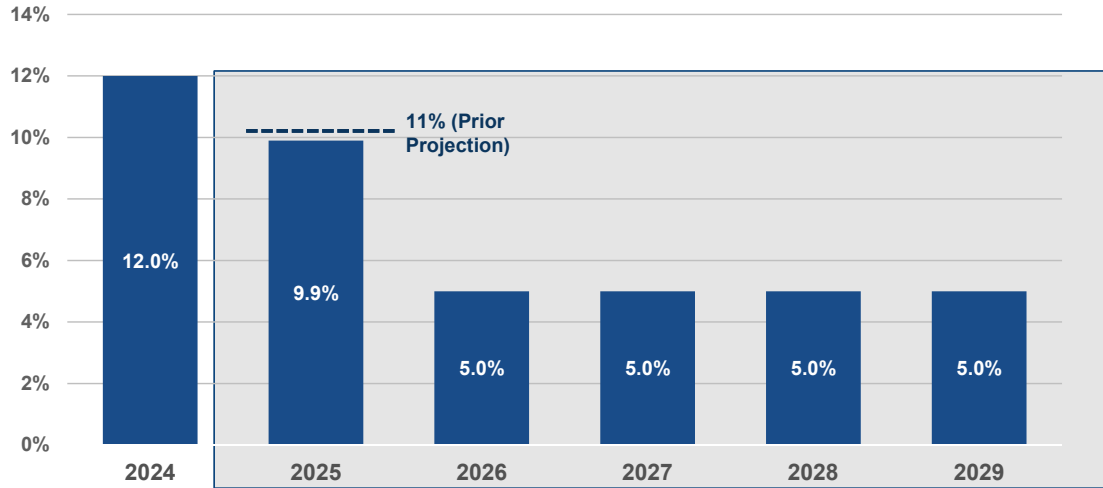
Revenues (millions)	
MVRD Requisition	\$117M
Transfer from Reserves	\$16M
Other Revenues	\$13M
Total	\$146M

Expenditure by Department



METRO VANCOUVER HOUSEHOLD IMPACT % CHANGE

Proposed 2025–2029 Financial Plan



METRO VANCOUVER OPERATING BUDGET

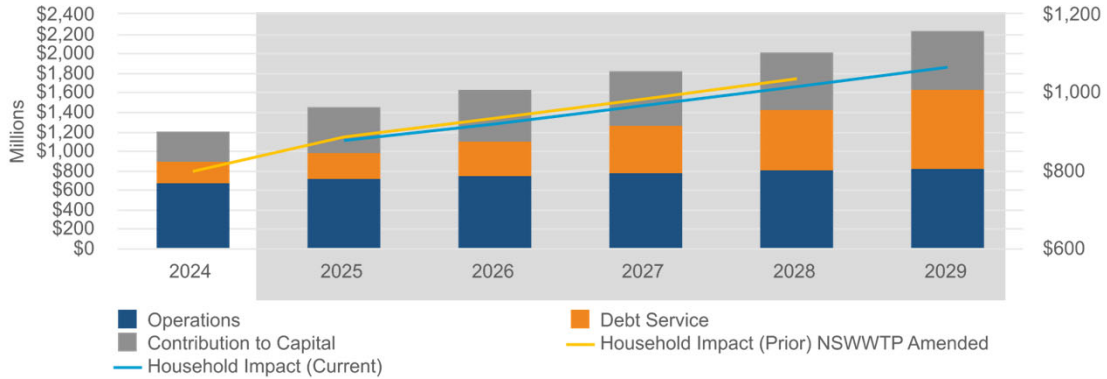
Expenditures

Overview:

- 2024 Operating Budget: \$1,216.0M
- 2025 Operating Budget: \$1,463.7M

Drivers:

- Operating Program is inflationary over the 5 years
- Funding capital program through debt service and contribution to capital in accordance with Board policy



METRO VANCOUVER OPERATING BUDGET

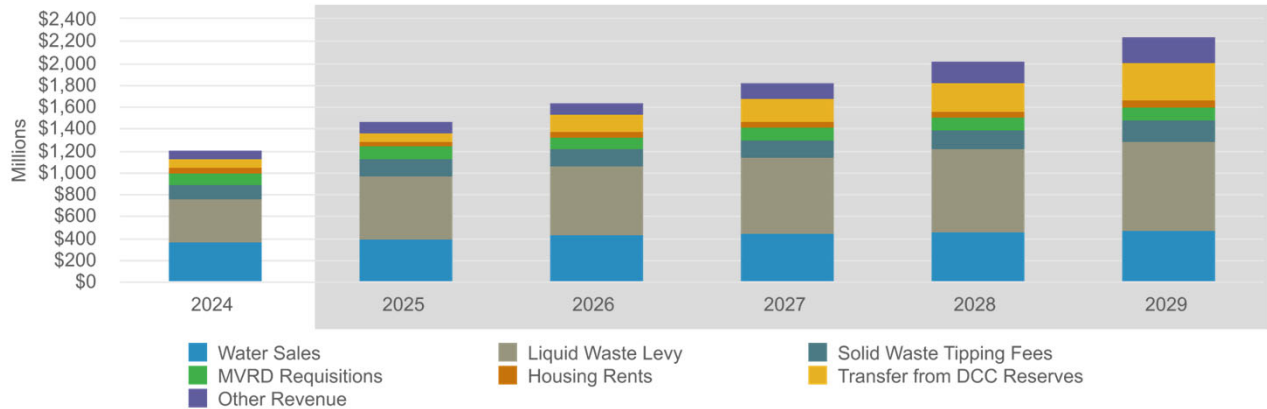
Revenues

Overview:

- Primary funding sources: water sales, sewer levy, tipping fees, rents, MVRD requisition
- Relative stability for primary sources

Drivers:

- Anticipated DCC revenues received and applied having downward pressure on HHI
- Continuously seeking partner funding for support



METRO VANCOUVER CAPITAL PLAN

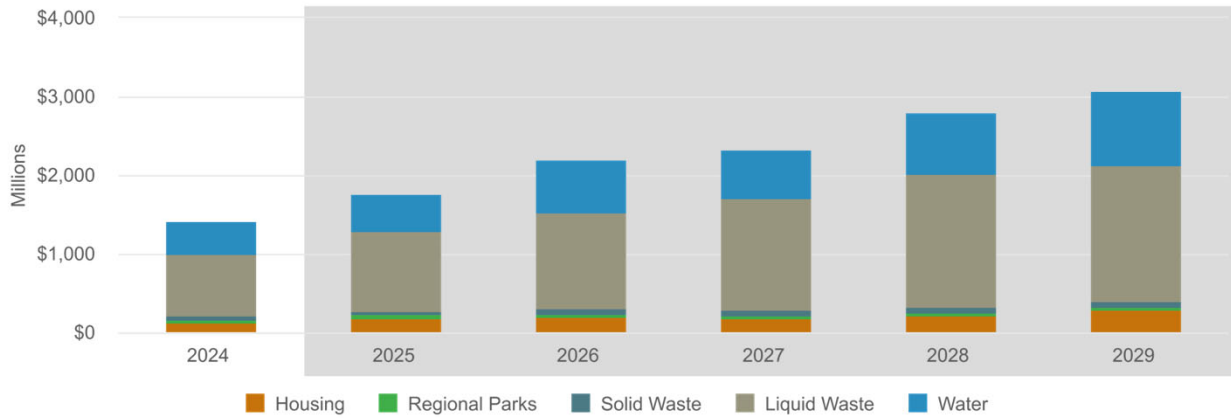
Expenditures

Overview:

- 2024 capital cash flow \$1.42B
- 2025 capital cash flow \$1.77B

Drivers:

- Continued activity on previously approved projects
- Regulatory upgrades and growth projects



Pacific Spirit Regional Park

Questions?

To: Zero Waste Committee

From: Paul Henderson, General Manager, Solid Waste Services

Date: September 24, 2024 Meeting Date: October 3, 2024

Subject: **2025 - 2029 Financial Plan – Solid Waste Services**

RECOMMENDATION

That the Zero Waste Committee endorse the 2025 - 2029 Financial Plan for Solid Waste Services as presented in the report dated September 24, 2024, titled “2025 - 2029 Financial Plan – Solid Waste Services”, and forward it to the Metro Vancouver Board Budget Workshop on October 16, 2024, for consideration.

EXECUTIVE SUMMARY

The 2025 - 2029 Metro Vancouver Financial Plan has been prepared following direction from the Financial Plan Task Force and from the Board at the Board Budget Workshops. The 2025 Budget has come under the household impact targets that were recommended by the Financial Plan Task Force and endorsed by the Board, which has resulted in an overall consolidated household impact for 2025 of 9.9%, down from the 11.0% projected for 2025 in the prior financial planning cycle.

For 2025, the operating budget for Solid Waste Services is proposed to increase by \$17.6 million (12.4%) to a total of \$160.1 million. The 2025 garbage tipping fees increase of \$7 per tonne (4.8%) is equal to the prior budget cycle projected increase. The average regional household impact is \$71, up \$3 or 4.8% from 2024. Updated waste flow and contingency disposal requirements have been integrated into budget projections.

Priorities for the Solid Waste function include the solid waste management plan update, expansion of reuse and repair opportunities, and support for various behavior change campaigns as well as National Zero Waste Council initiatives. Capital priorities include two new recycling depots at North Surrey and Langley Recycling and Waste Centres, and Waste-to-Energy Facility maintenance and district energy system.

PURPOSE

To present the 2025 - 2029 Financial Plan for Solid Waste Services for consideration by the Committee.

BACKGROUND

Metro Vancouver's annual budget process includes the development of detailed annual budgets and the updating of five-year financial plans for each of the four Metro Vancouver legal entities (Metro Vancouver Regional District, Metro Vancouver Housing Corporation, Greater Vancouver Water District, and Greater Vancouver Sewerage and Drainage District).

Three Board Budget Workshops were held in the spring with the objective of seeking direction for the preparation of the 2025 - 2029 Financial Plan. This has resulted in a plan that maintains the goals and objectives of Metro Vancouver while minimizing the impact on ratepayers through evaluation and optimizing the capital and operating programs. This report focuses on the solid waste function including both operating and capital budget elements for 2025 to 2029.

SOLID WASTE SERVICES PROGRAM

Solid Waste Services, within the Greater Vancouver Sewerage and Drainage District, provides waste reduction and recycling planning, and solid waste facility operations.

Solid Waste Services works collaboratively with member jurisdictions and others to provide waste management services to the region's 2.8 million people. The Metro Vancouver solid waste system is comprised of recycling and waste centres and a waste-to-energy facility. The City of Vancouver owns and operates the Vancouver South Transfer Station and Vancouver Landfill: facilities that are integrated into the regional solid waste system.

Solid Waste Services initiatives are guided by direction provided in the *2022-2026 Board Strategic Plan*, and the *Integrated Solid Waste and Resource Management Plan*, specifically the following:

- Reduce waste, increase recycling, and increase recovery of materials and energy from remaining waste. Dispose of residuals in a cost effective and environmentally sustainable manner.
- Develop and implement financial plans and policies that reflect a commitment to sound financial management and long-term planning, and which consider current and future ratepayers.
- Continue to develop programs and related communication campaigns that increase diversion rates of materials that can be reused, repurposed, or recycled.

The Board Strategic Plan also includes a number of initiatives related to implementing district energy, reviewing organics processing, and promoting cross-sector collaboration by leveraging the National Zero Waste Council and the Zero Waste Conference.

Work Plan Performance Indicators

High-level performance indicators have been developed across the organization to evaluate trends, determine key actions for the coming year, and to assist in long-term planning. The 2025 work plans for Solid Waste Services are presented in this report. Within the Solid Waste Services work plans, four performance indicators have been developed and are being tracked. These include:

- Annual waste flows in Metro Vancouver system (tonnes)
- Availability of the Waste-to-Energy Facility and recycling and waste centres (percent)
- Recycling rate (material recycled divided by total generated)

- Waste disposed per capita (tonnes/capita)

Metro Vancouver’s recycling and waste centres and Waste-to-Energy Facility have high customer availability (>99%). The recycling rate is currently at 65%, approximately twice the Canadian average. Waste disposed per capita is currently at 0.44 tonnes, compared to the Canadian average of 0.69 tonnes.

Continuous Improvement

Solid Waste Services regularly implements continuous improvement initiatives. Some recent initiatives include:

- Idea generation phase of the solid waste management plan update engagement process
- Weigh scale software replacement which included detailed training for weigh scale attendants and phased roll-out to the recycling and waste centres
- BCUC exemption for sale of heat from the Waste-to-Energy Facility to River District Energy
- Smart waste program implementation and Tipping Fee Bylaw updates to improve enforceability of the generator levy requirements
- Bottom ash beneficial use pilots

New or ongoing continuous improvement initiatives for 2025 include:

- A source reduction incentive program for haulers and processors who demonstrate actions to encourage recycling
- Processing of bottom ash combined with waste soil processing and soil beneficial use at the Coquitlam Landfill
- Expansion of reuse at recycling and waste centres with the addition of United Boulevard and Central Surrey

2025 Budget and 2025 - 2029 Financial Plan

The five-year financial plans for this cycle have been updated to address five central priorities identified by the Metro Vancouver Board in its Strategic Plan to guide the development of plans and budgets. The five priorities are:

- Financial sustainability and regional affordability
- Climate action
- Resilient services and infrastructure
- Reconciliation
- Housing

Each Metro Vancouver function has an annual work plan that includes strategic directions, performance indicators and key actions to guide the work for the coming year. Each function also has a “What’s Happening” summary that presents program highlights for the next five years.

The 2025 - 2029 Solid Waste Services Financial Plan is included as Attachment 1. The 2025 Annual Work Plan for Solid Waste Services presented in this report is included in Attachment 3 and the “What’s Happening” highlights for the years 2025 - 2029 are included in Attachment 4.

Operating Budget Highlights

The Solid Waste Services operating budget is separated into operating programs and funding required to support the expanding capital program (debt service and contribution to capital). It is proposed to increase by \$17.6 million in 2025 for a total budget of \$160.1 million (Attachment 1). This increase is primarily a result of increased landfill disposal costs, increased Waste-to-Energy Facility operating costs, increased recycling and waste centre operating costs, and increased debt.

The 2025 operating budget includes the following key actions:

- Continued work on the solid waste management plan update to advance zero waste and the circular economy.
- Continue to enhance customer service and monitoring including investigating continuous feedback mechanisms.
- Support for behavior change programs for textiles, single-use items, holiday waste, food waste, and illegal dumping.
- Continue to expand reuse and repair opportunities in partnership with member jurisdictions.
- Leverage the National Zero Waste Council to advance the circular economy and waste reduction at a national level.

Highlights of contracts and consulting projects anticipated to be undertaken in 2025 to respond to work plan requirements within the operating budget include the following:

- Langley Recycling and Waste Centre recycling depot permitting and construction
- Waste-to-Energy Facility district energy hot water pipe system construction commencement
- Recycling and Waste Centres operating and maintenance contract procurement
- Waste-to-Energy Facility operating contract procurement
- Waste composition analysis

Over the next five years, the Solid Waste Services budget is expected to increase an average of \$12.5 million or 7.5% per year. Of this overall increase, funding related to the expanding capital program (debt servicing and contribution to the capital) is increasing \$6.0 million per year on average over the next five years leaving the operating programs which are increasing, on average, by \$6.4 million per year, or approximately 4.6% per year.

Capital Budget Highlights

The Solid Waste Services capital budget for 2025 approval is \$419.0 million (Attachment 2). This amount includes all capital projects underway or planned in 2025. The capital program is funded by long-term debt and planned contribution to capital from the annual operating budget as available.

The capital plan has been streamlined for simplicity grouping projects into line items. The District Energy project has been combined into a single line item because the work to develop an energy centre at the Waste-to-Energy Facility and connect to River District is being done in parallel with design work for the subsequent phase of connecting to Metrotown and Edmonds. The budget for the district energy system is consistent with what was presented to the Board in October 2023 with the addition of funding for the education centre. That funding will support the classroom elements of an education centre plus other building elements that connect the public to the facility such as interactive displays and electric vehicle charging.

The projected capital cash flow for 2025 - 2029 totals \$340 million, an average of \$68.0 million per year. Attachment 2 shows the primary drivers for each of the projects on the 5-year capital plan:

- Upgrades – projects to enhance services for the community
- Resilience – projects in response to climate change or to increase system resilience
- Maintenance – projects associated with the maintenance and upkeep of existing facilities

The capital program over the next five years is focused on capital maintenance projects at the Waste-to-Energy Facility, and enhancing reuse and recycling services at the recycling and waste centres. Biosolids management and the district energy project at the Waste-to-Energy Facility are expected to increase beneficial use of waste materials and reduce greenhouse gas emissions.

The following key projects are included in the five-year plan:

- North Surrey and Langley recycling and waste centre recycling depots
- Waste-to-Energy Facility District Energy System
- Waste-to-Energy Facility Biosolids Management
- Various Waste-to-Energy capital replacement projects including replacement of the refuse cranes

Capital plan costs over the same 2025-2028 period have decreased by \$4.2 million compared to previous cycle projections. Costs associated with new initiatives or updated cost estimates from currently planned projects are offset by new project delivery methods and deferral of some projects not required at this time. Of note, the planned alternative fuel facility has been moved out of the capital plan. Rather than developing a regional facility Metro Vancouver will contract with existing and planned private construction and demolition waste processors to manage materials dropped off in small loads at recycling and waste centres. Additional ambient air monitoring at the Waste-to-Energy Facility is being done to compare ambient concentrations to dispersion modelling results and ambient air quality objectives to confirm the timing of the acid gas reduction project. Data collected to date continues to show low levels of ambient air hydrogen chloride and sulfur dioxide, at less than 10% of ambient air quality objectives.

2025 - 2029 Tipping Fee Projections

The following table shows the tipping fee projections based on the required revenue to offset expected expenditures. Tipping fees for 2025 are proposed to increase by \$7 per tonne. Requirements for 2025 and beyond will be reviewed during future budget processes with the goal of reducing tipping fee increases where possible.

The 2025 tipping fee of \$7 matches the previous cycle projection. 2026-2028 tipping fee projections also match previous cycle projections. The 2029 tipping fees are projected to increase by \$8 per tonne.

Projected Tipping Fees for Municipal Solid Waste (\$/tonne)	2024	2025	2026	2027	2028	2029
Tipping Fee Increase		\$7	\$7	\$8	\$8	\$8
Municipal Tipping Fee	\$134	\$141	\$148	\$156	\$164	\$172
Small Vehicles (0-1t)	\$168	\$175	\$182	\$190	\$198	\$206
Medium Vehicles (1-8t)	\$146	\$153	\$160	\$168	\$176	\$184
Large Vehicles (>8t)	\$120	\$127	\$134	\$142	\$150	\$158

Waste Flows

With garbage tipping fees being the primary revenue source for the Solid Waste function, waste flow projections are the key driver for annual budget projections. The waste flow for 2025 is budgeted at 1,012,000 tonnes, increased to match recent experience. Contingency disposal requirements have been updated to align with projected garbage quantities. With Vancouver Landfill and the Waste-to-Energy Facility operating at full capacity, any increases in garbage result in increased contingency disposal requirements.

Approval Process

The proposed 2025 - 2029 Financial Plan and Annual Work Plan for Solid Waste Services are presented for consideration and endorsement before being forwarded to the Board for consideration.

The next steps of the process are:

- The 2025 - 2029 Financial Plan and Annual Work Plan will be presented for consideration at the Metro Vancouver Board Budget Workshop on October 16, 2024.
- The Greater Vancouver Sewerage and Drainage District Board will consider adoption of the 2025 Budget and endorsement of the 2025 - 2029 Financial Plan on November 1, 2024.

ALTERNATIVES

1. That the Zero Waste Committee endorse the 2025 - 2029 Financial Plan for Solid Waste Services as presented in the report dated September 24, 2024, titled “2025 - 2029 Financial Plan – Solid Waste Services”, and forward it to the Metro Vancouver Board Budget Workshop on October 16, 2024 for consideration.
2. That the Zero Waste Committee amend the 2025 – 2029 Financial Plan for Solid Waste Services as follows: _____; and forward the amended Financial Plan to the Metro Vancouver Board Budget Workshop on October 16, 2024 for consideration.

FINANCIAL IMPLICATIONS

If the Greater Vancouver Sewerage and Drainage District Board approves the 2025 Budget and endorses the Five-Year Financial Plan for Solid Waste Services, as presented under Alternative 1, in 2025 the revenue from tipping fees for the system will increase by \$16.8 million (12.7%) to \$148.9 million which will generate the majority of the \$160.1 million in total revenue required to offset projected expenditures. This represents a \$3 or 4.8% increase in the cost to the average regional household to \$71 (2024 - \$68).

Over the term of the five-year plan, the annual tipping fee revenue is projected to increase by an average of \$11.4 million per year to provide the required revenue to offset projected expenditures. It is anticipated that the cost to the average regional household over the next five years will rise from \$71 in 2025 to \$86 in 2029 representing an average annual increase of approximately \$4 per household. The per household impact projected for the 2025 - 2028 period is the same as the previous budget cycle.

Under Alternative 2, the Committee may wish to consider recommending amendments to the 2025 Budget and Five-Year Financial Plan for Solid Waste Services for consideration at the Metro Vancouver Board Budget Workshop. Any changes to the plan may have an impact on the Solid Waste Services Financial Plan.

SUMMARY / CONCLUSION

The 2025 Budget and Five-Year Financial Plan for Solid Waste Services has been prepared following direction received at the Board Budget Workshops, and to respond to direction provided in the *Board Strategic Plan*. It is presented to Committee and Board members to provide overview information on activities and financial impacts for the years 2025 to 2029 for Solid Waste Services.

The 2025 Budget and Five-Year Financial Plan for Solid Waste Services provides the opportunity for Metro Vancouver to share with its member jurisdictions the proposed capital projects and operating programs, and the financial impact of these projects, over the next five years. The financial plan illustrates how Metro Vancouver proposes to pay for Solid Waste Services investments that are required to maintain assets and respond to the region's growing population. It is intended to be used as a guiding document for member jurisdictions in the development of their five-year financial plans and includes projections on household impact to demonstrate how the plan will remain affordable for Metro Vancouver residents while keeping pace with critical infrastructure requirements.

Staff recommend endorsing the 2025 - 2029 Budget and Five-Year Financial Plan and Annual Work Plan for Solid Waste Services as presented under Alternative 1.

ATTACHMENTS

1. 2025 - 2029 Solid Waste Financial Plan
2. 2025 - 2029 Capital Programs and Project Total – Solid Waste Services
3. 2025 Solid Waste Work Plan
4. 2025 - 2029 "What's Happening"
5. 2025 - 2029 Projected Reserves – Solid Waste
6. Presentation re: 2025 - 2029 Financial Plan – Solid Waste Services

70476163

GREATER VANCOUVER SEWERAGE AND DRAINAGE DISTRICT
SOLID WASTE SERVICES
2025 BUDGET REVIEW
2025 - 2029 FINANCIAL PLAN

	2024 BUDGET	2025 BUDGET	% CHANGE	2026 FORECAST	% CHANGE	2027 FORECAST	% CHANGE	2028 FORECAST	% CHANGE	2029 FORECAST	% CHANGE
REVENUES											
Solid Waste Tipping Fees	\$132,115,288	\$148,874,301	12.7%	\$158,583,891	6.5%	\$168,545,177	6.3%	\$178,785,121	6.1%	\$189,343,450	5.9%
Energy Sales	6,254,000	6,250,000		6,250,000		5,889,423		6,000,000		6,000,000	
Other External Revenues	4,042,041	4,928,890		7,241,967		9,039,463		9,193,257		9,350,957	
TOTAL REVENUES	<u>\$142,411,329</u>	<u>\$160,053,191</u>	12.4%	<u>\$172,075,858</u>	7.5%	<u>\$183,474,063</u>	6.6%	<u>\$193,978,378</u>	5.7%	<u>\$204,694,407</u>	5.5%
EXPENDITURES											
Operating Programs:											
Solid Waste Operations											
Allocated Quality Control	\$ 20,085	\$ 25,407		\$ 20,680		\$ 27,088		\$ 29,664		\$ 30,712	
Ashcroft Ranch	971,187	616,197		623,882		633,116		643,835		653,994	
Engineers in Training	125,326	123,306		127,186		131,187		135,307		139,568	
Landfills	35,825,563	44,458,053		40,424,770		42,839,104		46,031,026		49,528,809	
Recycling and Waste Centre	49,564,839	53,831,557		55,152,208		58,788,761		60,309,696		61,789,697	
Waste to Energy Facility	29,266,387	28,523,685		31,785,157		33,164,479		33,898,249		34,652,306	
	<u>115,773,387</u>	<u>127,578,205</u>	10.2%	<u>128,133,883</u>	0.4%	<u>135,583,735</u>	5.8%	<u>141,047,777</u>	4.0%	<u>146,795,086</u>	4.1%
Solid Waste Planning											
Policy and Facility Development	644,339	609,217		627,351		646,045		665,297		685,197	
Zero Waste Implementation	2,590,242	2,956,614		2,867,002		2,863,413		2,944,842		3,028,787	
Programs and Public Involvement	1,106,108	1,364,396		1,402,641		1,441,975		1,482,402		1,524,068	
	<u>4,340,689</u>	<u>4,930,227</u>	13.6%	<u>4,896,994</u>	(0.7%)	<u>4,951,433</u>	1.1%	<u>5,092,541</u>	2.8%	<u>5,238,052</u>	2.9%
Administration and Department Support	745,527	756,095	1.4%	779,727	3.1%	804,081	3.1%	829,156	3.1%	854,769	3.1%
Environmental Regulation and Enforcement	1,581,695	1,616,473	2.2%	1,679,475	3.9%	1,720,764	2.5%	1,769,077	2.8%	1,821,987	3.0%
Allocation of Centralized Support Costs	5,775,338	5,828,516	0.9%	5,899,081	1.2%	5,318,956	(9.8%)	5,456,642	2.6%	5,553,816	1.8%
Total Operating Programs	<u>128,216,636</u>	<u>140,709,516</u>	9.7%	<u>141,389,160</u>	0.5%	<u>148,378,969</u>	4.9%	<u>154,195,193</u>	3.9%	<u>160,263,710</u>	3.9%
Allocation of Project Delivery Cost	421,208	397,060	(5.7%)	406,681	2.4%	424,850	4.5%	441,763	4.0%	458,141	3.7%
Debt Service	12,465,692	17,138,153	37.5%	21,792,028	27.2%	28,006,962	28.5%	34,275,598	22.4%	40,070,285	16.9%
Contribution to Reserve	1,307,793	1,808,462	38.3%	8,487,989	369.3%	6,663,282	(21.5%)	5,065,824	(24.0%)	3,902,271	(23.0%)
TOTAL EXPENDITURES	<u>\$142,411,329</u>	<u>\$160,053,191</u>	12.4%	<u>\$172,075,858</u>	7.5%	<u>\$183,474,063</u>	6.6%	<u>\$193,978,378</u>	5.7%	<u>\$204,694,407</u>	5.5%

**GREATER VANCOUVER SEWERAGE AND DRAINAGE DISTRICT
CAPITAL PORTFOLIO
SOLID WASTE SERVICES
2025 CAPITAL BUDGET AND 2025 - 2029 CAPITAL PLAN**

	CAPITAL BUDGET FOR APPROVAL	2025 CAPITAL CASH FLOW	2026 CAPITAL CASH FLOW	2027 CAPITAL CASH FLOW	2028 CAPITAL CASH FLOW	2029 CAPITAL CASH FLOW	2025 TO 2029 TOTAL CAPITAL CASH FLOW	ACTIVE PHASE	PRIMARY DRIVER
CAPITAL EXPENDITURES									
Landfills									
Coquitlam Landfill Maintenance and Upgrades	\$ 23,750,000	\$ 5,550,000	\$ 5,400,000	\$ -	\$ -	\$ -	\$ 10,950,000	Multiple	Maintenance
Total Landfills	\$ 23,750,000	\$ 5,550,000	\$ 5,400,000	\$ -	\$ -	\$ -	\$ 10,950,000		
Recycling and Waste Centres									
Langley Recycling and Waste Centre Depot Development and Site Reconfiguration	\$ 20,300,000	\$ 3,500,000	\$ 8,250,000	\$ 4,000,000	\$ 4,000,000	\$ -	\$ 19,750,000	Design	Upgrade
Maple Ridge Recycling and Waste Centre Upgrades	2,000,000	750,000	750,000	-	-	-	1,500,000	Not Started	Upgrade
Compactor Replacements	3,000,000	100,000	-	1,000,000	3,000,000	-	4,100,000	Construction	Maintenance
North Surrey Recycling and Waste Centre Depot Development and Site Reconfiguration	43,900,000	1,500,000	8,500,000	9,750,000	-	-	19,750,000	Design	Upgrade
Solid Waste Facility Land Purchase	-	-	-	-	-	50,000,000	50,000,000	Not Started	Resilience
Weigh Scale Replacement	3,500,000	2,500,000	-	-	-	-	2,500,000	Design	Maintenance
Total Recycling and Waste Centres	\$ 72,700,000	\$ 8,350,000	\$ 17,500,000	\$ 14,750,000	\$ 7,000,000	\$ 50,000,000	\$ 97,600,000		
Waste To Energy Facilities									
Acid Gas Reduction	\$ 2,100,000	\$ -	\$ -	\$ -	\$ 1,650,000	\$ 5,000,000	\$ 6,650,000	Not Started	Upgrade
Biosolids Processing	23,750,000	7,500,000	7,000,000	4,000,000	3,000,000	-	21,500,000	Construction	Resilience
Waste-to-Energy Facility Maintenance	79,650,000	15,755,000	25,500,000	16,500,000	5,200,000	9,850,000	72,805,000	Multiple	Maintenance
Waste to Energy Facility District Energy Ph 1 and 2	217,000,000	5,500,000	19,500,000	33,000,000	52,500,000	20,000,000	130,500,000	Multiple	Resilience
Total Waste To Energy Facilities	\$ 322,500,000	\$ 28,755,000	\$ 52,000,000	\$ 53,500,000	\$ 62,350,000	\$ 34,850,000	\$ 231,455,000		
TOTAL CAPITAL EXPENDITURES	\$ 418,950,000	\$ 42,655,000	\$ 74,900,000	\$ 68,250,000	\$ 69,350,000	\$ 84,850,000	\$ 340,005,000		
CAPITAL FUNDING									
New External Borrowing	\$ 365,983,000	\$ 33,838,000	\$ 66,092,000	\$ 55,762,000	\$ 59,677,000	\$ 79,784,000	\$ 295,153,000		
Reserve	26,467,000	1,317,000	1,808,000	8,488,000	6,673,000	5,066,000	23,352,000		
External Funding - Interagency	26,500,000	7,500,000	7,000,000	4,000,000	3,000,000	-	21,500,000		
Total	\$ 418,950,000	\$ 42,655,000	\$ 74,900,000	\$ 68,250,000	\$ 69,350,000	\$ 84,850,000	\$ 340,005,000		
SUMMARY BY DRIVER									
Maintenance	\$ 109,900,000	\$ 23,905,000	\$ 30,900,000	\$ 17,500,000	\$ 8,200,000	\$ 9,850,000	\$ 90,355,000		
Resilience	240,750,000	13,000,000	26,500,000	37,000,000	55,500,000	70,000,000	202,000,000		
Upgrade	68,300,000	5,750,000	17,500,000	13,750,000	5,650,000	5,000,000	47,650,000		
Total	\$ 418,950,000	\$ 42,655,000	\$ 74,900,000	\$ 68,250,000	\$ 69,350,000	\$ 84,850,000	\$ 340,005,000		

SOLID WASTE SERVICES

Solid Waste Operations

Description of Services

Solid Waste Services provides waste reduction and recycling planning and solid waste facility operations to the region under the authority of the Greater Vancouver Sewerage and Drainage District (GVS&DD). Solid Waste Operations is responsible for operating an integrated solid waste management system with service delivery focused on achieving Metro Vancouver's zero waste objectives through reliable, cost-effective, safe and environmentally-sound operations. The regional solid waste system is a user pay model, primarily funded through tipping fees.

Metro Vancouver facilities include the North Shore, United Boulevard, North Surrey, Central Surrey, Maple Ridge, and Langley recycling and waste centres; and Waste-to-Energy Facility; these facilities are managed through several large contracts. Metro Vancouver also manages the closed Coquitlam Landfill, the former Matsqui Transfer Station site, and the Ashcroft Ranch.

Strategic Directions and High Level Goals Supported

Board Strategic Plan

- Continue to expand and enhance the disposal ban program
- Continue to expand recycling options at regional recycling and waste centres
- Implementing district energy at the Waste-to-Energy Facility

Integrated Solid Waste and Resource Management Plan

- Goal 1 - Minimize waste generation
- Goal 2 - Maximize reuse, recycling & material recovery
- Goal 3 - Recover energy from waste stream after material recovery
- Goal 4 - Dispose of all waste in landfill after recycling & energy recovery

Performance indicators

Indicator	Historical and/or Industry Benchmark	Current Performance	2025 Performance Objective
Annual solid waste flows in Metro Vancouver system (tonnes)	2023: 1,003,000 2022: 1,002,000 2021: 976,000	projected: 1,012,000	1,012,000
Processing Availability of the Waste-to-Energy Facility	2023: 90.1% 2022: 90.6% 2021: 91.4%	projected: 91%	93%
Customer availability for the Waste-to-Energy Facility	2023: 99% 2022: 99% 2021: 99%	projected: 99%	99.0%
Customer availability for the Recycling and Waste Centres	2023: 99.9% 2022: 99.9% 2021: 99.9%	projected: 99.9%	99.9%

2025 Key Actions

General

- Development of a hauler source reduction incentive program
- Asset management program development, including condition assessments and asset policy development
- Upgrading of weigh scale unattended terminals

Recycling and Waste Centres

- Recycling depot development design, permitting and RFQ/RFP at North Surrey and Langley recycling and waste centres
- Facility upgrades at the Maple Ridge Recycling and Waste Centre
- New canopy cover construction for the compactor bay at North Surrey Recycling and Waste Centre
- Alternative fuel and recyclables recovery pilot targeting small vehicle waste
- Tipping floor repairs at North Shore and North Surrey recycling and waste centres
- Replacement of push-wall at North Shore Recycling and Waste Centre
- North Surrey Recycling and Waste Centre administration building refurbishment
- Upgrade fire detection and suppression system at North Shore and North Surrey recycling and waste centres
- Permitting and installation of Encorp Return-It-Express container at Central Surrey Recycling and Waste Centre
- Implementation of used oil collection program at Langley Recycling and Waste Centre
- Recycling and waste centres building and asset assessment
- Assess opportunities to improve pedestrian and cyclist access
- Award two new operating and maintenance service contracts for 6 recycling and waste centres and transition to new operators if required.

Waste-to-Energy Facility

- Complete and close out maintenance projects: compressed air system replacement, refuse pit bunker door replacement, feedwater pump replacement, fly ash silo, fabric filter hopper replacement, electrical load study, and fire suppression system projects
- Continue progress on many active maintenance projects: electrical transformer replacement, island power, refuse crane replacement, ash crane replacement, secondary economizer replacement, and several other smaller projects
- Initiate design for soot blower, stack refurbishment, and special handle waste system projects.
- Begin biosolids processing system construction
- District energy system detailed design and electrical study
- Award contract for new Operating and Maintenance Contract and transition to new operator. Current contract expires in March 2025

Landfills

- Ongoing environmental operations at Coquitlam Landfill (leachate and landfill gas), leachate, landfill gas, and groundwater monitoring and reporting for environmental compliance
- Installation of several new groundwater monitoring wells
- Complete upgrade for the east leachate pump station
- Initiate construction for the landfill gas flare station redesign

Ashcroft Ranch

- McLean Lake Dam hydrological and geotechnical assessment consulting study
- Third turbine pump installation

SOLID WASTE SERVICES

Solid Waste Planning and Community Engagement

Description of Services

Solid Waste Services provides waste reduction and recycling planning, zero waste implementation, and solid waste facility operations to the region under the authority of the Greater Vancouver Sewerage and Drainage District (GVS&DD). Solid waste planning and community engagement activities include:

- Technical and audience research and engagement to develop an updated regional solid waste management plan
- Regional waste reduction and recycling initiatives in the current solid waste management plan, including disposal bans, bylaws, regional policies, and recycling services
- Regional infrastructure planning and development to fulfill future needs for waste recycling, transfer and disposal
- Community engagement services

In addition, to support Metro Vancouver's commitment to protect the environment and conserve resources, Environmental Regulation and Enforcement negotiates and issues permits, orders and licenses, promotes compliance, and enforces solid waste bylaws. According to a user-pay principle, these regulatory costs are recovered through fees.

Strategic Directions and High Level Goals Supported

Board Strategic Plan

- Expand actions that will reduce the amount of litter and waste that Metro Vancouver members manage, including strategies to reduce single-use items and other disposable consumer products
- Continue to provide technical support to communication campaigns that increase diversion through source reduction, reuse, repurposing or recycling
- Research opportunities to ensure sufficient capacity in the regional recycling and reuse system, including assessing opportunities for organics and wood
- Identify future disposal alternatives with full life cycle, cost and greenhouse gas emission analyses

Integrated Solid Waste and Resource Management Plan (2010) (update underway):

- Goal 1 - Minimize waste generation
- Goal 2 - Maximize reuse, recycling & material recovery
- Goal 3 - Recover energy from waste stream after material recovery
- Goal 4 - Dispose of all waste in landfill after recycling & energy recovery

Performance Indicators

Indicator	Historical and/or industry benchmark	Current performance ¹	2025 performance objective
Recycling rate (percent of solid waste diverted from final disposal)	Canadian average ² : 27.6% Metro Vancouver historical: 2022: 65% 2021: 65% 2020: 64% 2019: 63%	65%	66%
Waste disposed per capita (tonnes)	Canadian average ¹ : 0.69 Metro Vancouver historical: 2022: 0.44 2021: 0.45 2020: 0.45 2019: 0.48	0.44	0.43

¹Most recent figures derived from Statistics Canada disposal & diversion tonnages (2018) and Metro Vancouver 2021 Annual Solid Waste and Recycling Summary

2025 Key Actions

- Solid Waste and Recycling Industry Advisory Committee support
- Solid Waste Management Plan Independent Consultation and Engagement Panel support
- Engagement for review and update of the solid waste management plan, including supporting the Solid Waste Management Plan Public/Technical Advisory Committee
- Disposal Ban Program implementation monitoring
- Textiles, single-use items, seasonal waste, food waste, illegal dumping, and the Zero Waste Conference support
- National Zero Waste Council work to support waste prevention and advance a circular economy, including the administration of the council and delivery of a zero waste conference
- Canada Plastic Pact support
- National Solid Waste Benchmarking Initiative and applied waste research
- Regional waste composition monitoring
- Solid waste initiatives public engagement
- Regional Food Recovery Network
- Regional reuse and repair events
- Zero waste construction certification
- Carbon capture, utilization, sequestration study

Solid Waste Services

2025 to 2029 – WHAT’S HAPPENING

Below is a summary of the significant initiatives to be undertaken by Solid Waste Services over the next 5 years.

Initiative	Description	Theme
2025		
Capital replacements at the Waste-to-Energy Facility	Continue capital replacements and upgrades, including secondary economizers, generation bank, refuse crane, and primary superheaters	System Stewardship
Solid waste management plan update	Continue review and update of the region’s solid waste management plan	Environmental Protection and Climate Action
Reuse and Repair events	Continue expansion of reuse at recycling and waste centers and community repair events	Environmental Protection and Climate Action
Zero waste initiatives	Continued research and development of waste prevention and diversion initiatives, such as new policies, incentives, business models and regulatory measures, to move toward a circular economy	Environmental Protection and Climate Action
North Surrey and Langley Recycling Depots	North Surrey and Langley recycling and waste centre recycling depot design and commence construction	Environmental Protection and Climate Action
District energy system at the Waste-to-Energy Facility	Construction of the district energy system, providing waste heat to River District community	Environmental Protection and Climate Action
Biosolids at the Waste- to-Energy Facility	Complete detailed design and begin construction of biosolids processing system	Opportunities for Innovation and Enhanced Service
Coquitlam Landfill	Processing of bottom ash combined with waste soil processing and soil beneficial use at the Coquitlam Landfill	Environmental Protection and Climate Action
Coquitlam Landfill	Complete replacement of east leachate pump station and landfill gas flare system	System Stewardship
2026		
Capital replacements at the Waste-to-Energy Facility	Continue capital replacements and upgrades, including stack refurbishment	System Stewardship
Solid waste management plan review	Complete review and update of the region’s solid waste management plan	Environmental Protection and Climate Action

Zero waste initiatives	Begin to implement and monitor the new waste prevention and diversion initiatives in the updated solid waste management plan	Environmental Protection and Climate Action
Recycling and Waste Centre recycling depots	New recycling depots operating at the Langley and potentially North Surrey facilities	Environmental Protection and Climate Action
Biosolids at the Waste-to-Energy Facility	Complete construction and commissioning of biosolids processing at WTEF	Opportunities for Innovation and Enhanced Service
2027		
Capital replacements at the Waste-to Energy Facility	Continue capital replacements and upgrades, including boiler grate and feed table supports replacement project	System Stewardship
Zero waste initiatives	Implement and monitor the new waste prevention and diversion initiatives in the updated solid waste management plan	Environmental Protection and Climate Action
North Shore compactor replacement	Replace the North Shore Recycling and Waste Centre compactor	System Stewardship
2028		
Western region recycling and waste centre replacement	Begin design for the western region recycling and waste centre replacement	Addressing Regional Growth
Capital replacements at the Waste-to Energy Facility	Capital replacements and upgrades and begin design of the acid gas reduction system	System Stewardship
Zero waste initiatives	Continue to implement and monitor the new waste prevention and diversion initiatives in the updated solid waste management plan	Environmental Protection and Climate Action
District energy system at the Waste-to-Energy Facility	Complete commissioning of phase 1 of the district energy system	Environmental Protection and Climate Action
District energy system at the Waste-to-Energy Facility	Commence construction of district energy system expansion to Metrotown and Edmonds	Environmental Protection and Climate Action
2029		
Capital replacements at the Waste-to Energy Facility	Begin design of fabric filter baghouse replacement and special handle waste direct feed system and other maintenance projects.	System Stewardship
Zero waste initiatives	Continue to implement and monitor the new waste prevention and diversion initiatives in the updated solid waste management plan	Environmental Protection and Climate Action

METRO VANCOUVER DISTRICTS
2025 - 2029 PROJECTED RESERVES - SOLID WASTE

OPERATING RESERVES

	2024 ENDING BALANCE	2025 OPENING BALANCE	CONTRIBUTION	WITHDRAWALS	INTEREST	2025 ENDING BALANCE	2026 ENDING BALANCE	2027 ENDING BALANCE	2028 ENDING BALANCE	2029 ENDING BALANCE
Solid Waste Services	\$ 36,885,831	\$ 36,885,831	\$ -	\$ -	\$ 922,146	\$ 37,807,977	\$ 38,753,176	\$ 39,722,005	\$ 40,715,055	\$ 41,732,931

DISCRETIONARY RESERVES

	2024 ENDING BALANCE	2025 OPENING BALANCE	CONTRIBUTION	WITHDRAWALS	INTEREST	2025 ENDING BALANCE	2026 ENDING BALANCE	2027 ENDING BALANCE	2028 ENDING BALANCE	2029 ENDING BALANCE
Solid Waste Services										
Solid Waste General Reserve	\$ 19,768,615	\$ 19,768,615	\$ -	\$ (1,358,000)	\$ 477,240	\$ 18,887,855	\$ 18,653,326	\$ 19,119,659	\$ 19,597,650	\$ 20,087,591
Landfill Post Closure Reserve	9,597,760	9,597,760	-	-	239,944	9,837,704	10,083,647	10,335,738	10,594,131	10,858,984
Landfill Closure and Post-Closure Liability	55,610,945	55,610,945	2,002,136		1,415,300	59,028,381	62,488,073	66,027,971	69,671,917	73,391,280
Total	\$ 84,977,320	\$ 84,977,320	\$ 2,002,136	\$ (1,358,000)	\$ 2,132,484	\$ 87,753,940	\$ 91,225,046	\$ 95,483,368	\$ 99,863,698	\$ 104,337,855



Central Surrey Recycling and Waste Centre

2025 – 2029 FINANCIAL PLAN

SOLID WASTE SERVICES

Paul Henderson, P.Eng.
 General Manager, Solid Waste Services

Zero Waste Committee – October 3, 2024
 68633433



North Shore Recycling and Waste Centre

SOLID WASTE OVERVIEW

Solid Waste over the next 5 years

The Solid Waste Services function is focused on ensuring excellent customer service to the more than 1,000,000 annual users of the regional solid waste system and continuing to advance zero waste and the circular economy.

SOLID WASTE SERVICES OVERVIEW

- Solid Waste Services provides waste reduction and recycling planning and operates a series of solid waste facilities
- The regional solid waste system is a resilient and reliable public, user-pay program funded through tipping fees

PERFORMANCE METRICS

Solid Waste Services

Key Performance	Past Performance (Average)	Expected Performance 2025
Recycling Rate (percent of solid waste diverted from final disposal)	65%	Increase to 66% or more diversion rate
Waste Disposed (tonnes) per Capita	0.44	Maintain at 0.44 or decrease per capita tonnes disposed
Annual solid waste flows in Metro Vancouver System	1,003,000 tonnes	Budgeted at 1,012,000 tonnes
Availability of the Waste-to-Energy Facility	91%	Maintain at 91% or increase facility availability to 93%

BENCHMARK OF UTILITY COSTS – 2024

Solid Waste (\$ CAD / tonne)

Solid Waste	
Metro Vancouver (average tipping fee)	\$145
Toronto	\$176
Seattle	\$245
San Francisco	\$358

5

CONTINUOUS IMPROVEMENT – 2024 COMPLETE OR ONGOING

Solid Waste Services

Initiative	Outcomes
Solid waste management plan	<ul style="list-style-type: none"> Idea generation engagement for solid waste management plan update
BCUC exemption on district energy heat sales	<ul style="list-style-type: none"> Rate setting for heat through agreements with users
Weigh scale software upgrade implementation	<ul style="list-style-type: none"> Range of new features: license plate readers, emailing bills, real-time customer feedback
Smart waste program in place	<ul style="list-style-type: none"> Helps ensure generator levy being appropriately remitted

6

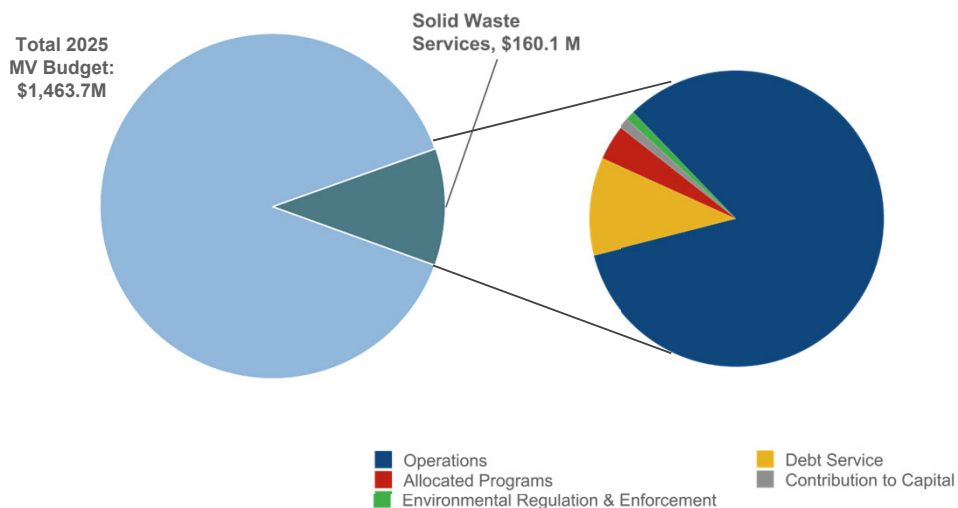
CONTINUOUS IMPROVEMENT – 2025 NEW

Solid Waste Services

Initiative	Outcomes
Coquitlam Landfill Eastern Area Closure	<ul style="list-style-type: none"> Co-processing soil and bottom ash combined with landfill closure
Source Reduction Incentive Program	<ul style="list-style-type: none"> Source reduction incentive program for waste haulers and processors who demonstrate actions to encourage recycling
Reuse at Recycling and Waste Centres	<ul style="list-style-type: none"> Continuing expansion of reuse at recycling and waste centres with addition of United Boulevard and Central Surrey

BUDGET OVERVIEW

2025 Operating Budget Breakdown – Solid Waste Services



OPERATING EXPENDITURES

Solid Waste Services Financial Plan

Overview:

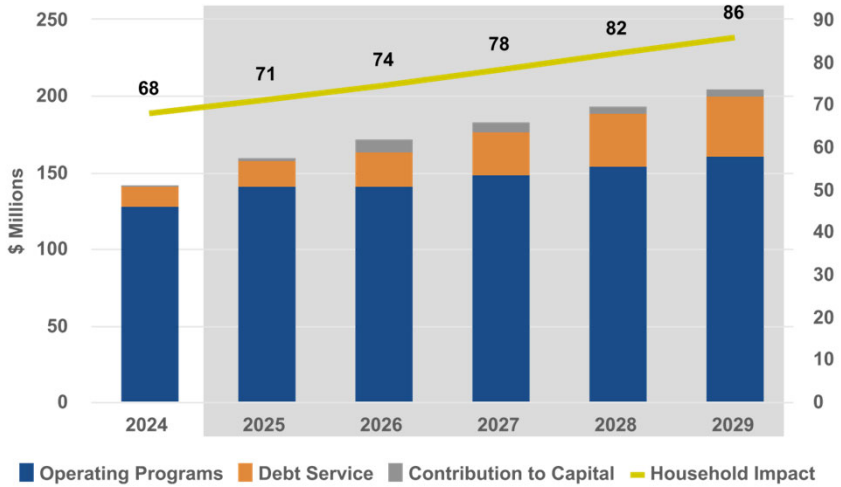
2024 Operating Budget: **\$142.4M**
 2025 Operating Budget: **\$160.1M**

12.4% increase

Drivers for Change:

- Updated waste flow and contingency disposal to align with experience
- Debt servicing for capital projects

2025 – 2029 Solid Waste Services Financial Plan



OPERATING FUNDING

Solid Waste Services Financial Plan

Overview:

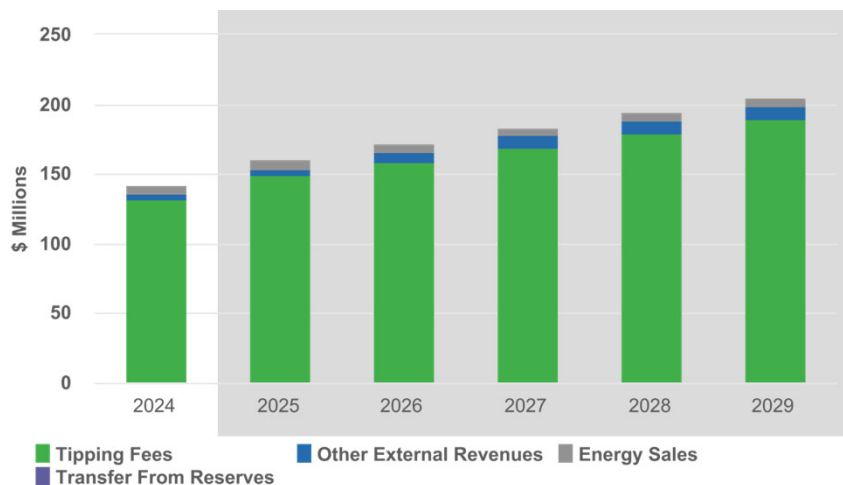
2024 Operating Budget: **\$142.4M**
 2025 Operating Budget: **\$160.1M**

12.4% increase

Drivers for Change:

- Updated waste flow projections
- Tipping fee increases same as projected in previous budget cycle

2025 – 2029 Solid Waste Services Financial Plan



OPERATING HIGHLIGHTS – 2025 - 2029

Solid Waste Services

Budget Year	Initiative	Description
2025	Biosolids utilization system design	The system will allow up to 25,000 t/year of biosolids to be managed saving significant hauling and GHG emissions
2026	Construction of Waste-to-Energy Facility District Energy system	Begin construction of the Phase 1 section of the WTEF District Energy system including an Energy Centre and hot water pipe network
2027	Target for completion of solid waste management plan update	Goal to complete solid waste management plan update
2028	Zero waste initiatives in new solid waste management plan	Implement and monitor the new waste prevention and diversion initiatives in the updated solid waste management plan
2029	Capital replacements and upgrades at the Waste-to-Energy Facility	Continue capital replacements and upgrades.

11

CAPITAL EXPENDITURES

Solid Waste Services Capital Plan

Overview:

2024 Capital Cash Flow: **\$54.1M**

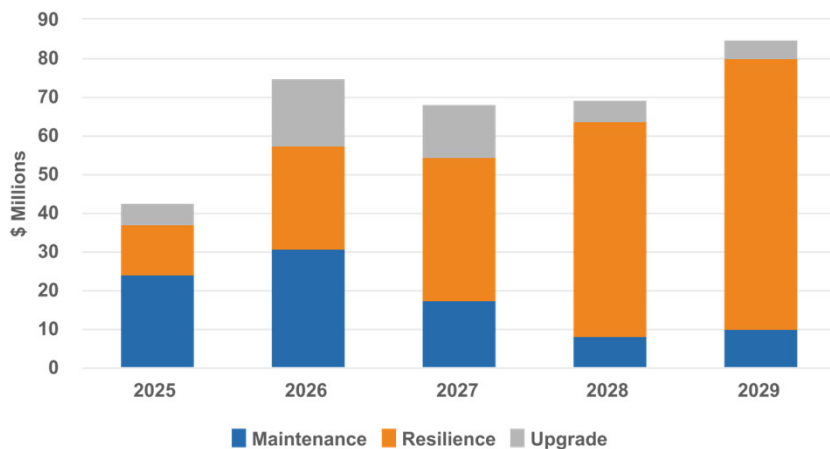
2025 Capital Cash Flow: **\$42.7M**

21.2% decrease

Drivers for Change:

- Waste-to-Energy Facility Projects
- North Surrey and Langley Recycling Depot Development

2025 – 2029 Solid Waste Services Capital Cash Flow



CAPITAL FUNDING

Solid Waste Services Capital Plan

Overview:

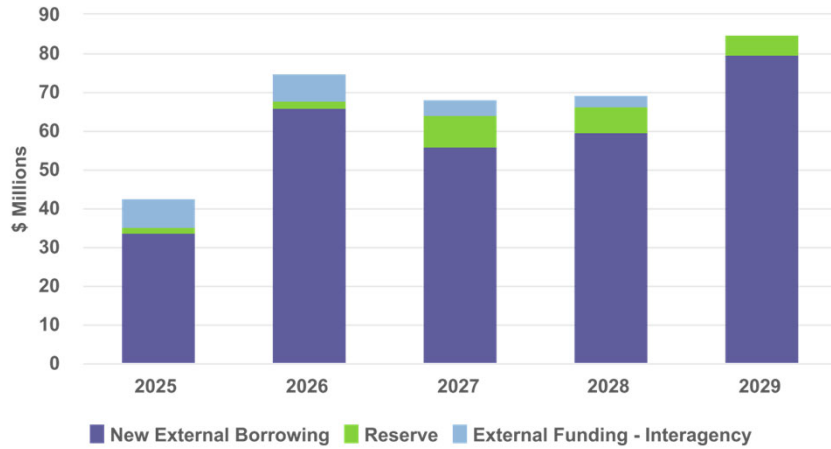
2024 Capital Cash Flow: **\$54.1M**
 2025 Capital Cash Flow: **\$42.7M**

21.2% decrease

Drivers for Change:

- Capital primarily funded through debt, with debt payment through operating budget including tipping fees and new district energy revenues starting in 2027

2025 – 2029 Solid Waste Services Capital Funding



SOLID WASTE FINANCIAL PLAN SUMMARY

	2024	2025	2026	2027	2028	2029
Total Expenditures (\$ Millions)	\$142.4	\$160.1	\$172.1	\$183.5	\$194.0	\$204.7
% Change		12.4%	7.5%	6.6%	5.7%	5.5%
Tipping Fee Increase (\$/t)		\$7	\$7	\$8	\$8	\$8
Blended Tipping Rate (\$/t)	\$144	\$151	\$158	\$166	\$174	\$182
Total Capital Cash Flow (\$ Millions)	\$54.1	\$42.7	\$74.9	\$68.3	\$69.4	\$84.9
Household Impact (\$)	\$68	\$71	\$74	\$78	\$82	\$86
% Change		4.8%	4.6%	5.1%	4.8%	4.6%
Prior Cycle Household Impact Change (%)		4.8%	4.6%	5.1%	4.8%	N/A



United Boulevard Recycling and Waste Centre

Questions?

metrovancover

15

To: Zero Waste Committee

From: Allen Jensen, Senior Project Engineer, Solid Waste Services

Date: September 24, 2024 Meeting Date: October 3, 2024

Subject: **GVS&DD Tipping Fee and Solid Waste Disposal Regulation Amendment Bylaw No. 383, 2024 - Amends Bylaw 379, 2024**

RECOMMENDATION

That the GVS&DD Board:

- a) approve the following amendments to the Tipping Fee Bylaw effective January 1, 2025:
 - I. increase garbage tipping fees by \$7 per tonne for all weight categories;
 - II. increase the generator levy by \$3 per tonne; and
 - III. other rate changes and revisions as described in the report dated September 24, 2024, titled "GVS&DD Tipping fee and Solid Waste Disposal Regulation Amendment Bylaw No. 383, 2024 – Amends Bylaw 379, 2024";
 - b) give first, second and third reading to *Greater Vancouver Sewerage and Drainage District Tipping Fee and Solid Waste Disposal Regulation Amendment Bylaw No. 383, 2024*; and
 - c) adopt *Greater Vancouver Sewerage and Drainage District Tipping Fee and Solid Waste Disposal Regulation Amendment Bylaw No. 383, 2024*.
-

EXECUTIVE SUMMARY

The *Greater Vancouver Sewerage and Drainage District Tipping Fee and Solid Waste Disposal Regulation Bylaw No. 379, 2024* (Tipping Fee Bylaw) sets rates and requirements at Metro Vancouver solid waste facilities.

This report proposes an increase to the 2024 garbage tipping fees of \$7 per tonne, or between a 4.2% and 5.8% increase depending on the load weight, and the generator levy by \$3 per tonne. The proposed 2025 garbage tipping fees increase of \$7 per tonne is equal to the projected tipping fee increase in the previous five year financial plan. Other changes and proposed revisions are as described in this report.

PURPOSE

To recommend changes to the Tipping Fee Bylaw and seek GVS&DD Board adoption of *Greater Vancouver Sewerage and Drainage District Tipping Fee and Solid Waste Disposal Regulation Amendment Bylaw No. 383, 2024*.

BACKGROUND

The Tipping Fee Bylaw sets levies, rates, charges, and disposal ban requirements at Metro Vancouver solid waste facilities, under the authority of the *Greater Vancouver Sewerage and Drainage District Act*. This report proposes a number of amendments to the Tipping Fee Bylaw that would be effective January 1, 2025, including an increase in garbage tipping fees and the generator levy.

Garbage Tipping Fees

All garbage tipping fee weight categories are proposed to increase by \$7 per tonne or from 4.2% to 5.8% depending on the load weight. A \$7 per tonne increase in garbage tipping fees is equal to the prior cycle projected increase in the report titled, “2024 – 2028 Financial Plan – Solid Waste Services”, approved by the Board in October 2023.

Generator Levy

The generator levy is incorporated into the garbage tipping fee for garbage disposed at Metro Vancouver and City of Vancouver facilities. If a hauler delivers residential or commercial/institutional garbage to another facility, the hauler is required to remit the generator levy to Metro Vancouver. The generator levy is being increased proportionally to the change in the tipping fee, with a proposed \$3 per tonne increase. The generator levy is set at a level to offset the costs incurred by the GVS&DD to provide solid waste management in the region, including the fixed costs of the region’s recycling and waste centre network and waste reduction and recycling planning activities.

General Rate Increases

Rates for materials other than general garbage are proposed to increase by approximately 2% to 5% depending on the material:

- Special handle waste fee by \$14 per tonne to \$295 per tonne
- Mixed organics by \$3 to \$143 per tonne
- Yard trimmings and clean wood by \$5 per tonne to \$118 per tonne
- Surcharge rate for loads containing any Hazardous and Operational Impact Materials or Product Stewardship Materials by \$3 to \$76 per load
- Municipal organics by \$2 to \$115 per tonne

Residuals from construction and demolition material processing facilities are received at the Vancouver Landfill along with some construction and demolition waste. The material is not received at Metro Vancouver facilities, but a rate is included in the Tipping Fee Bylaw for consistency. Subject to City Council approval, the City of Vancouver intends to increase the rate for these materials from \$158 per tonne in 2024 to \$185 per tonne in 2025, effective March 4, 2025. On that basis, the updated rate is included in the proposed Tipping Fee Bylaw.

Other Changes

A new term mixed organics replaces the terms source-separated organic waste and commercial organics, and includes in its definition all mixed yard trimmings and organics other than municipal organics. Mixed organics are accepted at all facilities up to 100 kg, with the exception of the North Shore Recycling and Waste Centre which will also accept quantities greater than 100 kg since the operating contract includes processing of large volumes of mixed organics.

A new term Local Authority has been added to replace both municipality and local government in some sections of the Tipping Fee Bylaw. Local authority includes a municipality, a regional district, the trust council, a local trust committee and the Islands Trust Conservancy, a greater board, and an improvement district. Existing references in the Tipping Fee Bylaw to “a written agreement between a municipality and the GVS&DD” have been amended to “a written agreement between a

Local Authority and the GVS&DD” to align with statutory authority under the *Greater Vancouver Sewerage and Drainage District Act* to enter into agreements with a municipality and any other person relating to the removal and disposal of waste.

A number of other definition changes and minor updates are included in the bylaw to clarify and simplify provisions.

All proposed changes are shown in *Greater Vancouver Sewerage and Drainage District Tipping Fee and Solid Waste Disposal Regulation Amendment Bylaw No. 383, 2024* (Attachment 1). A blackline version of the proposed changes to the Tipping Fee Bylaw is included as attachment 2.

ALTERNATIVES

1. That the GVS&DD Board:
 - a) approve the following amendments to the Tipping Fee Bylaw effective January 1, 2025:
 - I. increase garbage tipping fees by \$7 per tonne for all weight categories;
 - II. increase the generator levy by \$3 per tonne; and
 - III. other rate changes and revisions as described in the report dated September 24, 2024, titled “GVS&DD Tipping fee and Solid Waste Disposal Regulation Amendment Bylaw No. 383, 2024 – Amends Bylaw 379, 2024”;
 - b) give first, second and third reading to *Greater Vancouver Sewerage and Drainage District Tipping Fee and Solid Waste Disposal Regulation Amendment Bylaw No. 383, 2024*; and
 - c) adopt *Greater Vancouver Sewerage and Drainage District Tipping Fee and Solid Waste Disposal Regulation Amendment Bylaw No. 383, 2024*.
2. That the GVS&DD Board receive for information the report dated September 24, 2024, titled “GVS&DD Tipping Fee and Solid Waste Disposal Regulation Amendment Bylaw No. 383, 2024 – Amends Bylaw 379, 2024”.

FINANCIAL IMPLICATIONS

If the Board approves Alternative 1, changes described in this report will take effect January 1, 2025, with notification to solid waste system users following approval of the bylaw. The Metro Vancouver solid waste function operates on a cost-recovery basis, with tipping fees primarily funding the Solid Waste Services budget, including the operation of the regional solid waste system and Metro Vancouver waste reduction and recycling planning initiatives. The garbage tipping fee is based on several factors including anticipated volume of waste received at regional solid waste facilities and system operating costs.

The proposed garbage tipping fee and generator levy increases are required to balance the Solid Waste Services budget proposed for 2025. If the Board does not approve the proposed changes to the Tipping Fee Bylaw, 2024 garbage tipping fees and the generator levy will remain in place and changes proposed in this report would not be implemented. If the garbage tipping fees and generator levy are not changed, the Solid Waste Services financial plan proposed for the next five years would need revision and the Solid Waste Services budget for 2025 would need to be adjusted prior to consideration by the Board.

CONCLUSION

Garbage tipping fees are proposed to increase by \$7 per tonne for all weight categories to recover costs and balance the Solid Waste Services budget proposed for 2025. The proposal to increase the generator levy by \$3 is proportional to the increase in tipping fees. Staff recommend Alternative 1, that the Board amend the Tipping Fee Bylaw. If the amendment bylaw is approved, Metro Vancouver will notify its solid waste facility customers. The proposed effective date of January 1, 2025, would allow time for haulers to communicate with their customers prior to the change.

ATTACHMENTS

1. *Greater Vancouver Sewerage and Drainage District Tipping Fee and Solid Waste Disposal Regulation Amendment Bylaw No. 383, 2024*
2. *Blackline Version Proposed Changes to Greater Vancouver Sewerage and Drainage District Tipping Fee and Solid Waste Disposal Regulation Bylaw No. 379, 2024*

65865594

**GREATER VANCOUVER SEWERAGE AND DRAINAGE DISTRICT
BYLAW NO. 383, 2024**

**A bylaw to amend Greater Vancouver Sewerage and Drainage District Tipping Fee and Solid
Waste Disposal Regulation Bylaw No. 379, 2024**

WHEREAS:

- A. the Greater Vancouver Sewerage and Drainage District (“GVS&DD”) Board (the “Board”) adopted the “Greater Vancouver Sewerage and Drainage District Tipping Fee and Solid Waste Disposal Regulation Bylaw No. 379, 2024”, as amended, a bylaw to establish, among other things, scales of charges for services rendered by the GVS&DD and for the use of any of the GVS&DD’s waste disposal facilities; and
- B. the Board wishes to amend “Greater Vancouver Sewerage and Drainage District Tipping Fee and Solid Waste Disposal Regulation Bylaw No. 379, 2024” as set out in this bylaw.

NOW THEREFORE the Board of the Greater Vancouver Sewerage and Drainage District enacts as follows:

Citation

1. The official citation of this bylaw is “Greater Vancouver Sewerage and Drainage District Tipping Fee and Solid Waste Disposal Regulation Amendment Bylaw No. 383, 2024”.

Effective Date

2. This bylaw will come into force and take effect on January 1, 2025.

Schedule

3. The following Schedule is attached to and forms part of this bylaw:
 - Schedule “B”, Fees and Surcharges

Amendment of Bylaw

4. “Greater Vancouver Sewerage and Drainage District Tipping Fee and Solid Waste Disposal Regulation Bylaw No. 379, 2024” is amended as follows:

(a) Section 5.1 is amended by:

- i. adding the following new definition in alphabetical order:

“**Local Authority**” means:

- (i) a municipality, including the City of Vancouver;
- (ii) a regional district;

- (iii) the trust council, a local trust committee and the Islands Trust Conservancy within the meaning of the *Islands Trust Act*, R.S.B.C. 1996 c. 239;
 - (iv) a corporate body, incorporated by an Act, with responsibility for the provision of water or sewage and drainage services;
 - (v) an improvement district incorporated under the *Local Government Act*, R.S.B.C. 2015 c. 1 or any other Act; and
 - (vi) any other local body prescribed by regulation as a local authority for the purposes of one or more provisions of the *Community Charter*, S.B.C. 2003 c. 26 or the *Local Government Act*, R.S.B.C. 2015 c. 1;
- ii. deleting and replacing the definitions “**Commercial Organics**” and “**Source-Separated Organic Waste**” with the following new definition in alphabetical order:
- “**Mixed Organics**” means unpackaged Food Waste, Yard Trimmings, Clean Wood, Recyclable Paper that has been soiled by or comingled with food residue, tissue paper, paper napkins or towels, or any combination thereof, that is picked up from or transported for residential, commercial or institutional sources and that does not contain plastic bags or bin liners, whether or not labelled ‘biodegradable’ or ‘compostable’, but excluding Municipal Organics;
- iii. deleting and replacing the definition “**Delta Garbage**” with the following definition:
- “**Delta Garbage**” means all Solid Waste originating from within the geographic area of the City of Delta and delivered to a Vancouver Disposal Site, but excluding Delta Residential Drop-off Garbage;
- iv. deleting and replacing the definition “**Delta Residential Drop-off Garbage**” with the following definition:
- “**Delta Residential Drop-off Garbage**” means Solid Waste originating from within the geographic area of the City of Delta and delivered to a Vancouver Disposal Site by customers residing in the City of Delta and using their personal vehicles;
- v. deleting and replacing the definition “**Green Waste**” with the following new definition in alphabetical order:
- “**Yard Trimmings**” means Municipal Solid Waste that comprises vegetative matter resulting from gardening, landscaping or land clearing, with a maximum

diameter of 30 centimetres and a maximum length of 120 centimetres, and that is capable of being composted. Yard Trimmings include grass, shrub and tree branches, grass sod, flowers, weeds, leaves, vegetable stalks, brush and tree stumps but exclude Snow Flocked or Frosted Trees, Toxic Plants, Clean Wood, Food Waste and Agricultural Waste.

vi. deleting and replacing the phrase “local government” in the definition “**Municipal Garbage**” and replacing with the phrase “Local Authority”;

vii. deleting and replacing the definition “**Municipal Organics**” with the following definition:

“**Municipal Organics**” means unpackaged Food Waste, Yard Trimmings, Clean Wood, Recyclable Paper that has been soiled by or comingled with food residue, tissue paper, paper napkins or towels, or any combination thereof, that a Local Authority or its contractor picks up from or transports for single family residences, where such pick up or transport occurs on a regular basis (typically: weekly, every two weeks or monthly), or which is picked up exclusively from Local Authority owned premises, such as parks, streets or public buildings, but excluding Mixed Organics;

viii. deleting and replacing the definition “**Recyclable Paper**” with the following definition:

“**Recyclable Paper**” means Municipal Solid Waste manufactured from thin sheets from wood pulp or other fibrous substances that may be converted into reusable materials and includes newspapers and inserts, magazines, telephone directories, catalogues, office papers, envelopes, boxboard, paper bags and mail, but excluding photographic paper, carbon paper, tissue paper, paper napkins or towels, waxed cardboard, wax paper and paper that is adhered to or coated with plastic or metal;

ix. deleting and replacing the definition “**Transaction Fee**” with the following definition:

“**Transaction Fee**” means the fee charged by the GVS&DD, in addition to the Tipping Fee, for each Load of Solid Waste delivered to a Solid Waste Facility, and each Load of Gypsum dropped off at a designated Recycling Area, as set out in Table 2 of Schedule “B”;

x. deleting and replacing the definition “**Vancouver Garbage**” with the following definition:

“Vancouver Garbage” means all Solid Waste that originates from within the geographic area of the City of Vancouver and delivered to a Vancouver Disposal Site;

- xi. deleting the word “and” after the semicolon in the definition “**Waste Hauler**”;
- xii. deleting the period after the definition “**Weight Only Ticket**” and replacing with a semicolon and the word “and”.

(b) Section 6.7 is deleted in its entirety and replaced with the following:

6.7 Despite anything else in this Bylaw, Loads of Noxious Weeds can be delivered to a Solid Waste Facility as Solid Waste or as Yard Trimmings.

(c) Section 7.1(b) is amended by deleting the number “64” and replacing with the number “67”.

(d) Sections 7.4 and 7.7 are amended by deleting the phrase “municipality” and replacing with the phrase “Local Authority”.

(e) Section 7.8 is deleted in its entirety and replaced with the following:

7.8 If a person attends a Solid Waste Facility with a Load that contains any combination of Municipal Organics, Mixed Organics, Yard Trimmings, Food Waste, Clean Wood, Gypsum, Mattresses, Recyclable Material and/or other Solid Waste and the person chooses not to weigh-out after dropping off each part of the Load at the designated Recycling Areas, then the person must pay to the GVS&DD the Tipping Fee or Recycling Fee for the entire Load that is based on the highest fee payable for any part of the Load, in the amounts set out in Schedule “B”, together with any applicable Surcharges.

(f) Section 7.13 is deleted in its entirety and replaced with the following:

7.13 Every person who drops off a Load of Municipal Organics at a designated Recycling Area that contains more than 0.05% (by wet weight) of any other type of Solid Waste must pay a Surcharge in the amount set out in Table 4 of Schedule “B”, plus the costs of remediation and clean-up.

(g) Section 7.14 is deleted in its entirety and replaced with the following:

7.14 Every person who drops off a Load of Mixed Organics at a designated Recycling Area that contains more than 0.5% (by wet weight) of any other type of Solid Waste must pay a Surcharge in the amount set out in Table 4 of Schedule “B”, plus the costs of remediation and clean-up.

- (h) Sections 8.2, 8.3 and 8.4 are amended by deleting the phrase “disposed of at” and replacing with the phrase “delivered to”.
- (i) Section 9.15 is amended by deleting the phrase “local government” and replacing with the phrase “Local Authority”.
- (j) All references to the phrases “Commercial Organics” or “Source-Separated Organic Waste” are deleted and replaced with the phrase “Mixed Organics”.
- (k) All references to the phrase “Green Waste” are deleted and replaced with the phrase “Yard Trimmings”.
- (l) Schedule “B” is deleted in its entirety and replaced with Schedule “B” attached to this bylaw.

Read a first, second, and third time this _____ day of _____, _____.

Adopted this _____ day of _____, _____.

Mike Hurley, Chair

Dorothy Shermer, Corporate Officer

Schedule B Fees and Surcharges

**Table 1 - Tipping Fees for Solid Waste
(including the Generator Levy and the Disposal Rate)**

	Net Weight	North Shore Recycling and Waste Centre	North Surrey Recycling and Waste Centre	United Boulevard Recycling and Waste Centre	Central Surrey Recycling and Waste Centre	Maple Ridge Recycling and Waste Centre	Langley Recycling and Waste Centre	Waste-to-Energy Facility
Municipal Garbage	All Loads	\$141/metric tonne	\$141/metric tonne	\$141/metric tonne	\$141/metric tonne	\$141/metric tonne	\$141/metric tonne	\$141/metric tonne
All Solid Waste other than Municipal Garbage, Construction and Demolition Processing Residual Waste, and Special Handle Waste	0 to 0.99 metric tonnes	\$175/metric tonne ¹	\$175/metric tonne ¹	\$175/metric tonne ¹	\$175/metric tonne ¹	\$175/metric tonne ¹	\$175/metric tonne ¹	\$175/metric tonne ¹
	1.0 to 7.99 metric tonnes	\$153/metric tonne ²	\$153/metric tonne ²	\$153/metric tonne ²	\$153/metric tonne ²	\$153/metric tonne ²	\$153/metric tonne ²	\$153/metric tonne ²
	8.0 metric tonnes or more	\$127/metric tonne	\$127/metric tonne	\$127/metric tonne	Not accepted.	Not accepted.	Not accepted.	\$127/metric tonne
Construction and Demolition Processing Residual Waste	All Loads	\$185/metric tonne	\$185/metric tonne	\$185/metric tonne	Not accepted.	Not accepted.	Not accepted.	\$185/metric tonne
Minimum Tipping Fee for Solid Waste	Minimum Tipping Fee during Peak Hours	\$20/Load	\$20/Load	\$20/Load	\$10/Load	\$10/Load	\$10/Load	\$10/Load
	Minimum Tipping Fee outside of Peak Hours	\$10/Load	\$10/Load	\$10/Load	\$10/Load	\$10/Load	\$10/Load	\$10/Load
Special Handle Waste	All Loads	Not accepted.	Not accepted.	Not accepted.	Not accepted.	Not accepted.	Not accepted.	\$295/metric tonne \$50 minimum.

¹To a maximum of \$153 per Load.

²To a maximum of \$1,016 per Load.

**Schedule B
Fees and Surcharges**

Table 2 - Transaction Fee

Each Load of Solid Waste delivered to a Solid Waste Facility and each Load of Gypsum dropped off at a designated Recycling Area	\$5/Load
---	----------

Schedule B Fees and Surcharges

Table 3 - Recycling Fees for Recyclable Material dropped off in designated Recycling Areas

	North Shore Recycling and Waste Centre	North Surrey Recycling and Waste Centre	United Boulevard Recycling and Waste Centre	Central Surrey Recycling and Waste Centre	Maple Ridge Recycling and Waste Centre	Langley Recycling and Waste Centre	Waste-to-Energy Facility
Municipal Organics	\$115/metric tonne ¹	Not accepted.	Not accepted.	Not accepted.	Not accepted.	Not accepted.	Not accepted.
Mixed Organics	\$143/metric tonne ¹	\$143/metric tonne ^{1,2}	\$143/metric tonne ^{1,2}	\$143/metric tonne ^{1,2}	\$143/metric tonne ^{1,2}	\$143/metric tonne ^{1,2}	Not accepted.
Yard Trimmings	\$118/metric tonne ¹	\$118/metric tonne ¹	\$118/metric tonne ¹	\$118/metric tonne ¹	\$118/metric tonne ¹	\$118/metric tonne ¹	Not accepted.
Clean Wood	\$118/metric tonne ¹	\$118/metric tonne ¹	\$118/metric tonne ¹	\$118/metric tonne ¹	\$118/metric tonne ¹	\$118/metric tonne ¹	Not accepted.
Gypsum – New: less than ½ metric tonne	\$150/metric tonne ¹	\$150/metric tonne ¹	\$150/metric tonne ¹	\$150/metric tonne ¹	\$150/metric tonne ¹	\$150/metric tonne ¹	Not accepted.
Gypsum – Used: less than ½ metric tonne	\$200/metric tonne ¹	\$200/metric tonne ¹	\$200/metric tonne ¹	\$200/metric tonne ¹	\$200/metric tonne ¹	\$200/metric tonne ¹	Not accepted.
Mattresses	\$15 per Mattress	\$15 per Mattress	\$15 per Mattress	\$15 per Mattress	\$15 per Mattress	\$15 per Mattress	Not accepted.

¹Minimum Recycling Fee of \$10 per Load.

²Maximum weight of 100 kilograms per Load.

Table 4 – Surcharges

Loads containing Banned Recyclable Materials other than Food Waste or Expanded Polystyrene Packaging that exceeds either 5% of the total weight of the Load or 5% of the total volume of the Load (section 7.9)	50% of the applicable Tipping Fee
Loads containing Contaminated Recyclable Paper that exceeds either 5% of the total weight of the Load or 5% of the total volume of the Load (section 7.10)	50% of the applicable Tipping Fee
Loads containing Expanded Polystyrene Packaging that exceeds either 20% of the total weight of the Load or 20% of the total volume of the Load (section 7.11)	100% of the applicable Tipping Fee
Loads containing Food Waste that exceeds either 25% of the total weight of the Load or 25% of the total volume of the Load (section 7.12)	50% of the applicable Tipping Fee
Loads of Municipal Organics containing more than 0.05% (by wet weight) of any other type of Solid Waste (section 7.13)	\$50 per Load plus any remediation or clean-up costs
Loads of Mixed Organics containing more than 0.5% (by wet weight) of any other type of Solid Waste (section 7.14)	\$50 per Load plus any remediation or clean-up costs
Loads containing any Hazardous and Operational Impact Materials or Product Stewardship Materials (section 7.15)	\$76 per Load plus any remediation or clean-up costs
Unsecured Loads (section 7.16)	50% of the applicable Tipping Fee to a maximum of \$50.00

GREATER VANCOUVER SEWERAGE AND DRAINAGE DISTRICT

BYLAW NO. 379, 2024

**A Bylaw to Establish the Tipping Fee and
Solid Waste Disposal Regulation**

WHEREAS:

- A. Pursuant to the *Greater Vancouver Sewerage and Drainage District Act* S.B.C. 1956 c. 59 (the “**Act**”) the objects of the GVS&DD include the disposal of all types of waste and the operation and administration of facilities for the disposal of all types of waste;
- B. Section 7A(5)(b) of the Act empowers the GVS&DD to establish the uses to which its waste disposal facilities may be put and by whom they may be used;
- C. Section 7A(5)(g) of the Act empowers the GVS&DD to establish scales of charges for services rendered by the GVS&DD and for the use of any of the GVS&DD's waste disposal facilities;
- D. In relation to the disposal of solid waste generated within its area, section 7B of the Act empowers the GVS&DD to set levies payable by generators of waste or by other persons who use the services of a Waste Hauler based on the quantity, volume, type or composition of waste generated; and
- E. The GVS&DD intends for the fees and levies imposed by this Bylaw to raise sufficient revenue from everyone who benefits from solid waste management in the region, to offset the costs incurred by the GVS&DD to provide solid waste management in the region, including the fixed costs of the region’s recycling and waste centre network and waste reduction and recycling planning activities.

NOW THEREFORE the Board of the Greater Vancouver Sewerage and Drainage District enacts as follows:

1.0 Citation

- 1.1 The official citation of this Bylaw is “Greater Vancouver Sewerage and Drainage District Tipping Fee and Solid Waste Disposal Regulation Bylaw No. 379, 2024”.
- 1.2 This Bylaw may be cited as the “Tipping Fee Bylaw”.

2.0 Effective Date

- 2.1 This Bylaw will come into effect on ~~July~~ January 1, 2024~~2025~~.

- (ii) wastes from hatcheries or dairy processing;
- (iii) digestates from anaerobic digestion;
- (iv) materials produced or used in accordance with the *Organic Matter Recycling Regulation*, B.C. Reg. 76/2022;
- (v) soil amendments within the meaning of, and used in accordance with, the *Code of Practice for Soil Amendments*, B.C. Reg. 40/2021; or
- (vi) fish feces;

“Banned Recyclable Materials” means the specific materials, substances and objects listed in Schedule "D";

“Board” means the board of directors of the GVSⅅ

“Clean Wood” means Municipal Solid Waste that comprises solid wood, lumber or pallets:

- (i) that does not contain any glues or resins;
- (ii) that is unpainted, unstained and untreated; and
- (iii) that may or may not be pierced with nails or other metal fasteners;

“Collection Location” means a civic address from which a Waste Hauler picks up or transports Solid Waste;

Added by Bylaw 381, 2024

~~**“Commercial Organics”** means unpackaged Food Waste, Green Waste, Clean Wood, Recyclable Paper that has been soiled by or comingled with food residue, tissue paper, paper napkins or towels, or any combination thereof, other than Municipal Organics, that is picked up from or transported for residential, commercial or institutional sources and that does not contain:~~

- ~~(i) more than 0.5% (by wet weight) of any other type of Solid Waste; or~~
- ~~(ii) plastic bags or bin liners, whether or not labelled ‘biodegradable’ or ‘compostable’;~~

“Compliance Manager” means the person employed by MVRD as the Director of Environmental Regulation and Enforcement and includes any person designated to act in their place from time to time;

“Compliance Officer” means a person employed by MVRD as an Environmental Control Officer, a Permitting and Enforcement Officer, an Assistant Permitting and Enforcement

Officer, or their equivalent;

“Construction and Demolition Processing Residual Waste” means Solid Waste that remains after Construction and Demolition Waste has been processed by a Private Construction and Demolition Waste Processing Facility to recover Recyclable Material such as wood, metals, glass and plastics;

“Construction and Demolition Waste” means Solid Waste that originates from demolition or construction sources that has not been handled, managed or mixed with Solid Waste from other sources;

“Contaminated Recyclable Paper” means Recyclable Paper that has been contaminated with grease, oil, food residue or other material;

“Corrugated Cardboard” means Recyclable Paper that consists of a fluted corrugated sheet and one or two flat linerboards;

“Delta Garbage” means all Solid Waste originating from within the geographic area of the City of Delta and ~~disposed of at~~ delivered to a Vancouver Disposal Site, but excluding Delta Residential Drop-off Garbage;

“Delta Residential Drop-off Garbage” means Solid Waste ~~disposed~~ originating from within the geographic area of at the City of Delta and delivered to a Vancouver Disposal Site by ~~residential customers who reside~~ residing in Delta the City of Delta and using their personal vehicles;

“Disposal Rate” means the difference between the Tipping Fee and the Generator Levy, and covers the GVS&DD’s costs of transportation and disposal of waste;

“Environmental Management Act” means the *Environmental Management Act*, S.B.C. 2003 c. 53;

“Expanded Polystyrene Packaging” means white expanded polystyrene used for protecting and distributing products, but excluding:

- (i) food and beverage containers;
- (ii) packing ‘peanuts’; and
- (iii) expanded polystyrene that has been painted, soiled or treated;

“Food Waste” means Municipal Solid Waste that comprises food, including meat, fish, fat, dairy products, bread, baking products, fruits and vegetables, whether cooked or uncooked and packaged or unpackaged;

“Generator” means a person who generates Solid Waste, and includes a person who uses

the services of a Waste Hauler for the pick up, transport or delivery of Solid Waste;

“Generator Levy” means the levy payable by a Generator pursuant to this Bylaw at the rate set out at section 7.1;

“GVS&DD” means a body corporate and politic under the name of the “Greater Vancouver Sewerage and Drainage District” with the objects, powers and mode of management set forth in the Act, and its geographic area includes the respective geographic areas of the following jurisdictions: Village of Anmore, City of Burnaby, City of Coquitlam, City of Delta, Electoral Area A, City of Langley, Township of Langley, City of Maple Ridge, City of New Westminster, City of North Vancouver, District of North Vancouver, City of Pitt Meadows, City of Port Coquitlam, City of Port Moody, City of Richmond, City of Surrey, City of Vancouver, District of West Vancouver, and City of White Rock;

“Gypsum” means Municipal Solid Waste that comprises board made of several plies of fiberboard, paper or felt bonded to a hardened gypsum plaster core that is also known as drywall and includes gypsum board that has been painted or covered in wallpaper;

“Gypsum – New” means Gypsum date stamped 1990 or newer that has not been previously installed and does not contain tape, paint or drywall mud;

“Gypsum – Used” means Gypsum without a date stamp, Gypsum that is date stamped before 1990, or Gypsum that contains tape, paint or drywall mud;

“Hazardous and Operational Impact Materials” means the specific materials, substances and objects listed in Schedule "C";

“International Waste” means Solid Waste that originates from outside of Canada, but excluding Solid Waste from cruise ships from the United States;

“Load” means a quantity of Solid Waste that is or was contained within a single vehicle;

“Local Authority” means:

- (i) a municipality, including the City of Vancouver;
- (ii) a regional district;
- (iii) the trust council, a local trust committee and the Islands Trust Conservancy within the meaning of the *Islands Trust Act*, RSBC 1996 c.239;
- (iv) a corporate body, incorporated by an Act, with responsibility for the provision of water or sewage and drainage services;

(v) an improvement district incorporated under the *Local Government Act*, R.S.B.C. 2015 c.1 or any other Act; and

(vi) any other local body prescribed by regulation as a local authority for the purposes of one or more provisions of the *Community Charter*, S.B.C. 2003 c.26 or the *Local Government Act*, R.S.B.C. 2015 c.1;

“Manager” means the person appointed to the position of General Manager, Solid Waste Services from time to time and includes any person appointed or designated to act in their place;

“Mattresses” means Municipal Solid Waste that comprises a case of canvas or other heavy cloth stuffed with wool, cotton, other fibers or similar material, with or without coiled springs, that was used as a bed or as support for a bed;

“Mixed Organics” means unpackaged Food Waste, Yard Trimmings, Clean Wood, Recyclable Paper that has been soiled by or comingled with food residue, tissue paper, paper napkins or towels, or any combination thereof, that is picked up from or transported for residential, commercial or institutional sources and that does not contain plastic bags or bin liners, whether or not labelled ‘biodegradable’ or ‘compostable’, but excluding Municipal Organics;

“Mixed Solid Waste” means Solid Waste that originates from residential, commercial or institutional sources, or any combination of Solid Waste from these sources and other sources, but excluding Source-Separated Recyclable Material or Construction and Demolition Waste;

“Municipal Garbage” means:

- (i) Loads that contain any Solid Waste picked up from or transported for single family residences, whether or not mixed with other types of Solid Waste, and picked up or transported by ~~local government~~ Local Authority, their contractors or by entities contracting directly with individual households where such pick up or transport occurs on a regular basis (typically: weekly, every two weeks or monthly); or
- (ii) Loads of Solid Waste picked up or transported exclusively from ~~local government~~ Local Authority owned premises, such as parks, streets or public buildings, and picked up or transported by ~~local government~~ Local Authority or their contractors;

“Municipal Organics” means:

~~Source-Separated Organic~~ unpackaged Food Waste picked, Yard Trimmings, Clean Wood, Recyclable Paper that has been soiled by or comingled with food residue, tissue paper, paper napkins or towels, or any combination thereof, that a Local Authority or its contractor

~~picks up from or transported~~ transports for single family residences ~~by local government or their contractors,~~ where such pick up or transport occurs on a regular basis (typically: weekly, every two weeks or monthly); ~~or~~, or which is picked up exclusively from Local Authority owned premises, such as parks, streets or public buildings, but excluding Mixed Organics;

- (i) ~~Source Separated Organic Waste picked up or transported exclusively from local government owned premises, such as parks, streets or public buildings, and picked up or transported by local government or their contractors;~~

“Municipal Solid Waste” means Solid Waste that originates from residential, commercial, institutional, demolition, land clearing or construction sources or Solid Waste included in the Solid Waste Management Plan;

“MVRD” means a regional district pursuant to the *Local Government Act*, R.S.B.C. 2015 c. 1, under the name of the “Metro Vancouver Regional District” and its geographic area includes the respective geographic areas of the following jurisdictions: Village of Anmore, Village of Belcarra, Bowen Island Municipality, City of Burnaby, City of Coquitlam, City of Delta, Electoral Area A, City of Langley, Township of Langley, Village of Lions Bay, City of Maple Ridge, City of New Westminster, City of North Vancouver, District of North Vancouver, City of Pitt Meadows, City of Port Coquitlam, City of Port Moody, City of Richmond, City of Surrey, sc̓wáθən məsteyəx^w (Tsawwassen First Nation), City of Vancouver, District of West Vancouver, and City of White Rock;

“Noxious Weeds” means the weeds designated as noxious weeds in Part I and Part II of Schedule A of the *Weed Control Regulation*, B.C. Reg. 143/2011 but excluding Giant Hogweed (*Heracleum Mantegazzianum*) and Spurge Laurel (*Daphne Laureola*);

“Out of Region Waste” means Solid Waste that originates from outside the geographic area of the MVRD but is not International Waste;

“Peak Hours” means from 10:00 am to 2:00 pm on Monday to Friday, excluding statutory holidays;

“Personal Hygiene Products” means personal care products such as diapers, feminine hygiene products and incontinence products;

“Private Construction and Demolition Waste Processing Facility” means a facility that holds a valid and subsisting licence to receive Construction and Demolition Waste pursuant to *Greater Vancouver Sewerage and Drainage District Municipal Solid Waste and Recyclable Material Regulatory Bylaw No. 181, 1996*, as amended or replaced from time to time;

“Product Steward” means a legal entity, such as an organization, company or non-profit society, that develops and implements extended producer responsibility plans for managing the recovery of Product Stewardship Materials and fulfilling the obligations under the *Recycling Regulation*;

“Recyclable Paper” means Municipal Solid Waste manufactured from thin sheets from wood pulp or other fibrous substances that may be converted into reusable materials and includes newspapers and inserts, magazines, telephone directories, catalogues, office papers, envelopes, boxboard, paper bags and mail, but excluding photographic paper, carbon paper, tissue paper, paper napkins or towels, waxed cardboard, wax paper and paper that is adhered to or coated with plastic or metal;

Replaced by Bylaw 381, 2024

“Recycling Area” means those parts of a Solid Waste Facility or Vancouver Disposal Site designated for ~~Green Waste~~Yard Trimmings, Municipal Organics, ~~Commercial~~Mixed Organics, ~~Source-Separated Organic Waste~~, Clean Wood, Gypsum, Mattresses and the specific materials, substances and objects that comprise Recyclable Material;

Replaced by Bylaw 381, 2024

“Recycling Fee” means the recycling fee charged by the GVS&DD for ~~Green Waste~~Yard Trimmings, Municipal Organics, ~~Commercial~~Mixed Organics, ~~Source-Separated Organic Waste~~, Clean Wood, Gypsum, Mattresses and the specific materials, substances and objects that comprise Recyclable Material dropped off in the designated Recycling Area at a Solid Waste Facility, as set out in Table 3 of Schedule “B”;

“Recycling Regulation” means the *Recycling Regulation*, B.C. Reg. 449/2004 adopted pursuant to the *Environmental Management Act*;

“Regional Services Rate” means the fee charged by the GVS&DD for solid waste management related services that the GVS&DD provides for the benefit of the entire geographic area of the GVS&DD including, but not limited to, system analysis and planning, regulation and enforcement, demolition, land clearing and construction waste management, recycling and sustainability initiatives and administration;

“Snow Flocked or Frosted Tree” means a natural tree that has received an application of a substance that looks like artificial snow;

“Solid Waste” means noxious, offensive, unwholesome, or discarded solid material;

“Solid Waste Facility” means any of the facilities listed in Schedule "A";

“Solid Waste Management Plan” means the GVS&DD’s approved Solid Waste Management Plan pursuant to the *Environmental Management Act*, as amended or replaced from time to time;

~~**“Source-Separated Organic Waste”** means unpackaged Food Waste, Green Waste, Clean Wood, Recyclable Paper that has been soiled by or comingled with food residue, or carbon paper, tissue paper, paper napkins or towels, or any combination thereof and does not contain more than 0.05% (by wet weight) of any other type of Solid Waste;~~

“Source-Separated Recyclable Material” means Recyclable Material that has been separated from other Municipal Solid Waste by a Generator at the point of generation or pick up and which is accepted at a facility for the purposes of recycling;

“Special Handle Waste” means Out of Region Waste, International Waste or Solid Waste that requires immediate destruction or is designated for product destruction by a regulatory agency;

“Surcharge” means the amount charged by the GVS&DD, in addition to the applicable Tipping Fee, for disposing of the type of Solid Waste, as set out in Table 4 of Schedule “B”;

“Tipping Fee” means the fee charged by the GVS&DD for disposing of Solid Waste at a Solid Waste Facility, as set out in Table 1 of Schedule “B”, and which includes the Disposal Rate and the Generator Levy;

“Toxic Plants” means Devil’s Club (*Oplopanax Horridus*), Giant Hogweed (*Heracleum Mantegazzianum*) or Spurge Laurel (*Daphne Laureola*);

“Transaction Fee” means the fee charged by the GVS&DD, in addition to the Tipping Fee, for each Load of Solid Waste ~~disposed of at~~delivered to a Solid Waste Facility, and each Load of Gypsum dropped off at a designated Recycling Area, as set out in Table 2 of Schedule “B”;

“Unsecured Load” means a Load that is not tied and covered or otherwise secured to prevent any of the Load escaping from the vehicle;

“Vancouver Disposal Site” means either of the following facilities that are owned or operated by the City of Vancouver:

- (i) Vancouver Landfill located at 5400 72nd Street, Delta; or
- (ii) Vancouver South Transfer Station located at 377 West Kent Avenue North, Vancouver;

“Vancouver Garbage” means all Solid Waste that originates from within the geographic area of the City of Vancouver and ~~disposed of at~~delivered to a Vancouver Disposal Site;

“Waste Hauler” means:

- (i) a municipality, including the City of Vancouver, that picks up, transports or delivers Solid Waste; or
- (ii) a person who, on a commercial basis, picks up, transports or delivers Solid Waste;~~and~~

“Weight Only Ticket” means a document provided at the scale house that records only the weight of the particular Load brought to a Solid Waste Facility;~~and~~

“Yard Trimmings” means Municipal Solid Waste that comprises vegetative matter resulting from gardening, landscaping or land clearing, with a maximum diameter of 30 centimetres and a maximum length of 120 centimetres and that is capable of being composted. Yard Trimmings include grass, shrub and tree branches, grass sod, flowers, weeds, leaves, vegetable stalks, brush and tree stumps but exclude Snow Flocked or Frosted Trees, Toxic Plants, Clean Wood, Food Waste and Agricultural Waste.

6.0 Restrictions and Prohibitions

- 6.1 No person shall dispose of anything at a Solid Waste Facility except in accordance with this Bylaw.
- 6.2 No person shall dispose of Solid Waste at a Solid Waste Facility unless it originates from within the geographic area of the MVRD.
- 6.3 Despite section 6.2, acceptance at a Solid Waste Facility of Out of Region Waste and International Waste may be approved:
- (a) by the Manager for quantities up to 1,500 metric tonnes per Generator at the point of generation per 12-month period; or
 - (b) by the Board for quantities greater than 1,500 metric tonnes per Generator at the point of generation per 12-month period.
- 6.4 No person shall dispose of any Loads that emit odours, fumes or particulate matter (such as dust) that cause or are capable of causing material discomfort to a person at a Solid Waste Facility, except that where expressly authorized by the Manager such Loads may be disposed of at the Waste-to-Energy Facility.
- 6.5 No person shall dispose of any Loads dominated by oily materials, substances or objects at a Solid Waste Facility, except that where expressly authorized by the Manager such Loads may be disposed of at the Waste-to-Energy Facility.
- 6.6 No person shall dispose of any Loads of Toxic Plants at a Solid Waste Facility, except that where expressly authorized by the Manager such Loads may be disposed of at the Waste-to-Energy Facility, double bagged and in dedicated Loads.
- 6.7 Despite anything else in this Bylaw, Loads of Noxious Weeds can be ~~disposed of~~ delivered to a Solid Waste Facility as Solid Waste or as ~~Green Waste~~ Yard Trimmings.
- 6.8 No person shall dispose of Gypsum at a Solid Waste Facility, except Gypsum that weighs less than one half metric tonne may be dropped off at a designated Recycling Area.
- 6.9 No person shall dispose of Mattresses at a Solid Waste Facility, except that four or fewer

Mattresses per Load may be dropped off at a designated Recycling Area.

- 6.10 No person shall dispose of refrigerators, freezers, air conditioners, dehumidifiers, and water coolers at a Solid Waste Facility, except that four or fewer of these types of appliances per Load may be dropped off at a designated Recycling Area.
- 6.11 No person shall scavenge or salvage any Solid Waste from a Solid Waste Facility.
- 6.12 The Manager may prohibit a person who contravenes this Bylaw from disposing of Solid Waste at any Solid Waste Facility or dropping Recyclable Material in a designated Recycling Area for such period as the Manager may determine.

7.0 Levies, Rates and Charges

- 7.1 Every Generator of Municipal Solid Waste within the geographic area of the GVS&DD must pay the Generator Levy, in accordance with sections 7.2 and 7.3, as follows:
 - (a) the total amount of the Generator Levy payable by a Generator shall be calculated by multiplying the number of metric tonnes of Municipal Solid Waste generated by that Generator or picked up, transported or delivered by a Waste Hauler for that Generator, rounded up to the nearest tenth of a whole number, by the per metric tonne rate established under this Bylaw; and
 - (b) the rate established is \$~~64~~67 per metric tonne of Municipal Solid Waste.

- 7.2 The quantity, in metric tonnes, of Municipal Solid Waste generated by a Generator, or picked up, transported or delivered by a Waste Hauler for a Generator, shall be the actual quantity of Municipal Solid Waste generated by that Generator or picked up, transported or delivered by a Waste Hauler for that Generator, if that amount can be verified at a Solid Waste Facility, or a reasonable estimate of the quantity determined by the GVS&DD in accordance with section 9.21.
- 7.3 Every Generator of Municipal Solid Waste within the geographic area of the GVS&DD must pay the Generator Levy as follows:
- (a) to the GVS&DD at a Solid Waste Facility in accordance with section 7.4;
 - (b) to the City of Vancouver at a Vancouver Disposal Site as part of the applicable tipping fee at that site; or
 - (c) to a Waste Hauler that picks up, transports or delivers their Municipal Solid Waste.
- 7.4 Unless otherwise permitted pursuant to a written agreement between a ~~municipality~~Local Authority and the GVS&DD, every person who disposes of Solid Waste at a Solid Waste Facility or drops off Recyclable Material in a designated Recycling Area must pay to the GVS&DD:
- (a) the applicable Tipping Fees, which includes the Generator Levy, set out in Table 1 of Schedule “B”;
 - (b) the Transaction Fee set out in Table 2 of Schedule “B”;
 - (c) the applicable Recycling Fees set out in Table 3 of Schedule “B”; and
 - (d) the applicable Surcharges set out in Table 4 of Schedule “B”,
- and all such fees and Surcharges must be paid before the person leaves the Solid Waste Facility.
- 7.5 Every person who disposes of Construction and Demolition Processing Residual Waste at a Solid Waste Facility must pay the applicable Tipping Fee set out in Table 1 of Schedule “B” and the Transaction Fee set out in Table 2 of Schedule “B”.
- 7.6 Every person who disposes of Special Handle Waste at the Waste-to-Energy Facility must pay the applicable Tipping Fee set out in Table 1 of Schedule “B” and the Transaction Fee set out in Table 2 of Schedule “B”.

- 7.7 Unless otherwise permitted pursuant to a written agreement between a ~~municipality~~Local Authority and the GVS&DD, every person who drops off a Load of Municipal Organics, ~~Source-Separated Organic Waste, Green Waste~~Mixed Organics, Yard Trimmings, Clean Wood, Gypsum or Mattresses at a designated Recycling Area must pay the applicable Recycling Fee set out in Table 3 of Schedule “B”.
- 7.8 If a person attends a Solid Waste Facility with a Load that contains any combination of ~~Source-Separated Organic Waste, Green Waste~~Municipal Organics, Mixed Organics, Yard Trimmings, Food Waste, Clean Wood, Gypsum, Mattresses, Recyclable Material and/or other Solid Waste and the person chooses not to weigh-out after dropping off each part of the Load at the designated Recycling Areas, then the person must pay to the GVS&DD the Tipping Fee or Recycling Fee for the entire Load that is based on the highest fee payable for any part of the Load, in the amounts set out in Schedule “B”, together with any applicable Surcharges.
- 7.9 Every person who disposes of a Load at a Solid Waste Facility that contains a quantity of Banned Recyclable Materials other than Food Waste or Expanded Polystyrene Packaging that exceeds either 5% of the total weight of the Load or 5% of the total volume of the Load must pay a Surcharge in the amount set out in Table 4 of Schedule “B”.
- 7.10 Every person who disposes of a Load at a Solid Waste Facility that contains Contaminated Recyclable Paper that exceeds either 5% of the total weight of the Load or 5% of the total volume of the Load must pay a Surcharge in the amount set out in Table 4 of Schedule “B”.
- 7.11 Every person who disposes of a Load at a Solid Waste Facility that contains Expanded Polystyrene Packaging that exceeds either 20% of the total weight of the Load or 20% of the total volume of the Load must pay a Surcharge in the amount set out in Table 4 of Schedule “B”.
- 7.12 Every person who disposes of a Load at a Solid Waste Facility that contains Food Waste that exceeds either 25% of the total weight of the Load or 25% of the total volume of the Load must pay a Surcharge in the amount set out in Table 4 of Schedule “B”.

Revised by Bylaw 381, 2024

- 7.13 Every person who drops off a Load of Municipal Organics ~~or Source-Separated Organic Waste (other than Commercial Organics)~~ at a designated Recycling Area that contains more than 0.05% (by wet weight) of any other type of Solid Waste must pay a Surcharge in the amount set out in Table 4 of Schedule “B””, plus the costs of remediation and clean up.

Added by Bylaw 381, 2024

- 7.14 Every person who drops off a Load of ~~Commercial~~Mixed Organics at a designated Recycling Area that contains more than 0.5% (by wet weight) of any other type of Solid Waste must pay a Surcharge in the amount set out in Table 4 of Schedule “B””, plus the costs of remediation and clean up.

Renumbered by Bylaw 381, 2024

Transaction Fee, will be charged for the Load.

Renumbered by Bylaw 381, 2024

- 7.27 In the event that a person enters a Solid Waste Facility with a rental vehicle, out-of-province or dealer licence plate, or previously left without payment, then a \$50 deposit is required on entry to the Solid Waste Facility.

Renumbered by Bylaw 381, 2024

- 7.28 All unpaid fees, charges or levies imposed by this Bylaw are a debt due to the GVS&DD and the GVS&DD may take such action as it considers necessary and as permitted by law to collect the debt.

8.0 Regional Services Rate

- 8.1 The Regional Services Rate is set at an amount equal to 6% of the Tipping Fee for Municipal Garbage, as specified in Table 1 of Schedule "B". The Regional Services Rate is included in all Tipping Fees.

- 8.2 Every Quarter, the City of Vancouver must record:

- (a) the total tonnage of Solid Waste;
- (b) the tonnage of Vancouver Garbage and Delta Garbage; and
- (c) the tonnage of Delta Residential Drop-off Garbage,

that is ~~disposed of at~~delivered to the Vancouver Disposal Sites during that Quarter and provide such information to the GVS&DD and the City of Delta within 30 days of the end of the Quarter.

- 8.3 Every Quarter the GVS&DD will invoice the City of Vancouver for an amount equal to the Regional Services Rate for every metric tonne of Vancouver Garbage and Delta Residential Drop-off Garbage ~~disposed of at~~delivered to the Vancouver Disposal Sites during the previous Quarter, and the City of Vancouver must remit payment to the GVS&DD within 30 days of the date of such invoice.

- 8.4 Every Quarter the GVS&DD will invoice the City of Delta for an amount equal to the Regional Services Rate for every metric tonne of Delta Garbage ~~disposed of at~~delivered to the Vancouver Disposal Sites during the previous Quarter, and the City of Delta must remit payment to the GVS&DD within 30 days of the date of such invoice.

9.0 Waste Haulers

- 9.1 Every Waste Hauler must collect the Generator Levy from each Generator within the geographic area of the GVS&DD at the rate set out at section 7.1 with respect to all

reasonably incurred by the Waste Hauler in assembling and submitting the records, to a maximum amount of \$3,000 per submission of records, provided that:

- (a) the foregoing records demonstrate that the Waste Hauler has collected and remitted the Generator Levy in accordance with this Bylaw, as confirmed by the Compliance Manager or Compliance Officer in writing; and
- (b) the Waste Hauler provides the Manager with documentary evidence to the satisfaction of the Manager of the actual and reasonable costs incurred to assemble and submit the records.

A submission of records pursuant to section 9.10 in separate batches will for purposes of this section 9.11 constitute a single submission of records by the Waste Hauler and will not entitle the Waste Hauler to receive a separate fee reduction for each batch.

9.12 Sections 7.1, 7.3, 9.1, 9.2 and 9.3 do not apply where a Generator or Waste Hauler:

- (a) delivers a Load comprised of only Source-Separated Recyclable Material to a Receiving Facility other than a Solid Waste Facility or Vancouver Disposal Site;
- (b) delivers a Load comprised of only Construction and Demolition Waste to a Receiving Facility other than a Solid Waste Facility or Vancouver Disposal Site; or
- (c) drops off Source-Separated Recyclable Material at a Recycling Area.

9.13 Sections 9.4, 9.5 and 9.6 do not apply where a Waste Hauler delivers a Load comprised of only Construction and Demolition Waste to a Receiving Facility.

9.14 Where a Load has not been accepted as Source-Separated Recyclable Material for the purpose of recycling by a facility other than a Solid Waste Facility or a Vancouver Disposal Site, the Manager may, at their discretion, waive any Surcharge or Surcharges or a portion thereof otherwise payable under this Bylaw in respect of such Load when delivered to a Solid Waste Facility.

9.15 Sections 9.4(b), 9.4(c), and 9.4(d) do not apply where a Waste Hauler, on behalf of ~~local government~~ Local Authority or a Product Steward, picks up Municipal Garbage, Source-Separated Recyclable Material or Product Stewardship Materials from single family residences or transports Municipal Garbage, Source-Separated Recyclable Material or Product Stewardship Materials for single family residences, whether or not mixed with other types of Solid Waste.

9.16 For the purpose of ensuring compliance with this Bylaw, the powers of the Compliance Manager or a Compliance Officer include the power to enter on land or premises to:

Schedule B

FEES AND SURCHARGES

**Table 1 - Tipping Fees for Solid Waste
(including the Generator Levy and the Disposal Rate)**

	Net Weight	North Shore Recycling and Waste Centre	North Surrey Recycling and Waste Centre	United Boulevard Recycling and Waste Centre	Central Surrey Recycling and Waste Centre	Maple Ridge Recycling and Waste Centre	Langley Recycling and Waste Centre	Waste-to- Energy Facility
Municipal Garbage	All Loads	\$134141 /metric tonne	\$134141 /metric tonne	\$134141 /metric tonne	\$134141 /metric tonne	\$134141 /metric tonne	\$134141 /metric tonne	\$134141 /metric tonne
All Solid Waste other than Municipal Garbage, Construction and Demolition Processing Residual Waste, and Special Handle Waste	0 to 0.99 metric tonnes	\$168175 /metric tonne ¹	\$168175 /metric tonne ¹	\$168175 /metric tonne ¹	\$168175 /metric tonne ¹	\$168175 /metric tonne ¹	\$168175 /metric tonne ¹	\$168175 /metric tonne ¹
	1.0 to 7.99 metric tonnes	\$146153 /metric tonne ²	\$146153 /metric tonne ²	\$146153 /metric tonne ²	\$146153 /metric tonne ²	\$146153 /metric tonne ²	\$146153 /metric tonne ²	\$146153 /metric tonne ²
	8.0 metric tonnes or more	\$120127 /metric tonne	\$120127 /metric tonne	\$120127 /metric tonne	Not accepted.	Not accepted.	Not accepted.	\$120127 /metric tonne
Construction and Demolition Processing Residual Waste	All Loads	\$158185 /metric tonne	\$158185 /metric tonne	\$158185 /metric tonne	Not accepted.	Not accepted.	Not accepted.	\$158185 /metric tonne
Minimum Tipping Fee for Solid Waste	Minimum Tipping Fee during Peak Hours	\$20/Load	\$20/Load	\$20/Load	\$10/Load	\$10/Load	\$10/Load	\$10/Load
	Minimum Tipping Fee outside of Peak Hours	\$10/Load	\$10/Load	\$10/Load	\$10/Load	\$10/Load	\$10/Load	\$10/Load
Special Handle Waste	All Loads	Not accepted.	Not accepted.	Not accepted.	Not accepted.	Not accepted.	Not accepted.	\$281/metric tonne \$50 minimum.

¹To a maximum of ~~\$146153~~ per Load.

²To a maximum of ~~\$9601016~~ per Load.

Table 2 - Transaction Fee

Each Load of Solid Waste disposed of at <u>delivered to</u> a Solid Waste Facility and each Load of Gypsum dropped off at a designated Recycling Area	\$5/Load
--	----------

Table 3 - Recycling Fees for Recyclable Material dropped off in designated Recycling Areas

Replaced by Bylaw 381, 2024

	North Shore Recycling and Waste Centre	North Surrey Recycling and Waste Centre	United Boulevard Recycling and Waste Centre	Central Surrey Recycling and Waste Centre	Maple Ridge Recycling and Waste Centre	Langley Recycling and Waste Centre	Waste-to-Energy Facility
Municipal Organics	\$113 115/metric tonne, \$10 minimum tonne ¹	Not accepted.	Not accepted.	Not accepted.	Not accepted.	Not accepted.	Not accepted.
Commercial Organics	\$140 /metric tonne, \$10 minimum	Not accepted.	Not accepted.	Not accepted.	Not accepted.	Not accepted.	Not accepted.
Source-Separated Organic Waste Mixed Organics	\$113 143/metric tonne, \$10 minimum tonne ¹	\$113 143/metric tonne, \$10 minimum tonne ^{1,2}	\$113 143/metric tonne, \$10 minimum tonne ^{1,2}	\$113 143/metric tonne, \$10 minimum tonne ^{1,2}	\$113 143/metric tonne, \$10 minimum tonne ^{1,2}	\$113 143/metric tonne, \$10 minimum tonne ^{1,2}	Not accepted.
Green Waste Yard Trimmings	\$113 118/metric tonne, \$10 minimum tonne ¹	\$113 118/metric tonne, \$10 minimum tonne ¹	\$113 118/metric tonne, \$10 minimum tonne ¹	\$113 118/metric tonne, \$10 minimum tonne ¹	\$113 118/metric tonne, \$10 minimum tonne ¹	\$113 118/metric tonne, \$10 minimum tonne ¹	Not accepted.
Clean Wood	\$113 118/metric tonne, \$10 minimum tonne ¹	\$113 118/metric tonne, \$10 minimum tonne ¹	\$113 118/metric tonne, \$10 minimum tonne ¹	\$113 118/metric tonne, \$10 minimum tonne ¹	\$113 118/metric tonne, \$10 minimum tonne ¹	\$113 118/metric tonne, \$10 minimum tonne ¹	Not accepted.
Gypsum – New: less than ½ metric tonne	\$150/metric tonne, \$10 minimum tonne ¹	\$150/metric tonne, \$10 minimum tonne ¹	\$150/metric tonne, \$10 minimum tonne ¹	\$150/metric tonne, \$10 minimum tonne ¹	\$150/metric tonne, \$10 minimum tonne ¹	\$150/metric tonne, \$10 minimum tonne ¹	Not accepted.
Gypsum – Used: less than ½ metric tonne	\$200/metric tonne, \$10 minimum tonne ¹	\$200/metric tonne, \$10 minimum tonne ¹	\$200/metric tonne, \$10 minimum tonne ¹	\$200/metric tonne, \$10 minimum tonne ¹	\$200/metric tonne, \$10 minimum tonne ¹	\$200/metric tonne, \$10 minimum tonne ¹	Not accepted.

Mattresses	\$15 per Mattress	\$15 per Mattress	\$15 per Mattress	\$15 per Mattress	\$15 per Mattress	\$15 per Mattress	Not accepted.
-------------------	-------------------	-------------------	-------------------	-------------------	-------------------	-------------------	---------------

¹Minimum Recycling Fee of \$10 per Load.

²Maximum weight of 100 kilograms per Load.

Table 4 – Surcharges

Replaced by Bylaw 381, 2024

Loads containing Banned Recyclable Materials other than Food Waste or Expanded Polystyrene Packaging that exceeds either 5% of the total weight of the Load or 5% of the total volume of the Load (section 7.9)	50% of the applicable Tipping Fee
Loads containing Contaminated Recyclable Paper that exceeds either 5% of the total weight of the Load or 5% of the total volume of the Load (section 7.10)	50% of the applicable Tipping Fee
Loads containing Expanded Polystyrene Packaging that exceeds either 20% of the total weight of the Load or 20% of the total volume of the Load (section 7.11)	100% of the applicable Tipping Fee
Loads containing Food Waste that exceeds either 25% of the total weight of the Load or 25% of the total volume of the Load (section 7.12)	50% of the applicable Tipping Fee
Loads of Municipal Organics or Source Separated Organic Waste (other than Commercial Organics) containing more than 0.05% (by wet weight) of any other type of Solid Waste (section 7.13)	\$50 per Load <u>plus any remediation or clean-up costs</u>
Loads of Commercial <u>Mixed</u> Organics containing more than 0.5% (by wet weight) of any other type of Solid Waste (section 7.14)	\$50 per Load <u>plus any remediation or clean-up costs</u>
Loads containing any Hazardous and Operational Impact Materials or Product Stewardship Materials (section 7.15)	\$73 <u>76</u> per Load plus any remediation or clean-up costs
Unsecured Loads (section 7.16)	50% of the applicable Tipping Fee to a maximum of \$50.00

Schedule D

BANNED RECYCLABLE MATERIALS

1. Beverage containers identified in "Schedule 1- Beverage Container Product Category" to the *Recycling Regulation*;
2. Containers other than beverage containers made of:
 - (a) metal;
 - (b) glass;
 - (c) polyethylene terephthalate (number 1 PET plastic), high density polyethylene (number 2 HDPE plastic), low density polyethylene (number 4 LDPE plastic) or polypropylene (number 5 PP); or
 - (d) composite materials to create rigid packaging consisting of paper and polyethylene (gable top cartons, frozen food boxes, ice cream cartons and microwaveable dinner cartons) or paper, polyethylene and aluminum (aseptic cartons);
3. Corrugated Cardboard;
4. Recyclable Paper;
5. ~~Green Waste~~ Yard Trimmings;
6. Food Waste;
7. Clean Wood; and
8. Expanded Polystyrene Packaging.

To: Zero Waste Committee

From: Alison Schatz, Senior Communications Specialist, Corporate Communications

Date: September 23, 2024 Meeting Date: October 3, 2024

Subject: **2024 Single-Use Item Reduction "What's Your Superhabit?" Campaign Results**

RECOMMENDATION

That the Zero Waste Committee receive for information the report dated September 23, 2024, titled, "2024 Single-Use Item Reduction 'What's Your Superhabit?' Campaign Results."

EXECUTIVE SUMMARY

The 2024 "What's Your Superhabit?" campaign ran from June 3 to July 28, 2024. The objective was to reduce the use and disposal of single-use items among Metro Vancouver residents, particularly those aged 18–44 who are more likely to have received a single-use item. A regional paid media buy was complemented by a social media strategy to create and amplify moments of celebration. The campaign performed strongly with 37.2 million total impressions, nearly 500,000 videos views, and over 7,500 likes, comments, and shares on social media. The 2023 full-scale waste composition study showed that single-use item disposal decreased compared to 2022.

PURPOSE

To update the Committee on the results of the 2024 regional single-use item reduction campaign, "What's Your Superhabit?".

BACKGROUND

The single-use item reduction campaign is part of a suite of education, policy, regulatory, and facility investments by Metro Vancouver to reduce waste in the region. It supports the waste reduction objectives in the *Integrated Solid Waste and Resource Management Plan*. 2024 marked the fourth year of the campaign. This report provides an update on the results of the 2024 campaign as identified in the 2024 Zero Waste Committee Work Plan.

2024 SINGLE-USE ITEM REDUCTION CAMPAIGN

The 2024 "What's Your Superhabit?" campaign ran from June 3 to July 28, 2024. The objective was to reduce the use and disposal of single-use items among Metro Vancouver residents, particularly those aged 18–44 who are more likely to have received a single-use item. The strategy is to celebrate the everyday actions we all take to reduce single-use items. These small daily routines are, "Superhabits."

Single-use items (SUIs) have a lasting impact on our environment long after being used for a short period of time. In 2022, 1.3 billion single-use items (bags, containers, cups, straws, utensils) were disposed in the Metro Vancouver region — equivalent to 480 items per person per year.

Local, provincial, and federal governments, as well as businesses and NGOs are all taking action to reduce single-use items in the Metro Vancouver region. As such, the campaign focuses on voluntary reduction, and does not refer to any regulations.

Engagement with the Metro Vancouver Board and member jurisdictions informed the selection of five items of focus for the campaign: cups, containers, bags, utensils, and straws. In 2024, the campaign once again focused mostly on cups and takeout containers.

The creative features everyday people in powerful, superhero-like poses holding reusable items. The tone is fun and celebratory. The campaign website (Superhabits.ca; reference 1) features easy tips to start a Superhabit and reduce single-use items.

According to the 2022 post-campaign survey, the most common reason that residents give for using single-use items is that they forget to bring their reusable items with them. So, tips and prompts to reduce this barrier were woven into the campaign. The call to action was updated to "Get tips to remember your reusables at Superhabits.ca."

The paid media targeted the younger audience. Tactics included social media (YouTube, Facebook, Instagram, Pinterest), print (Vancouver Is Awesome), radio (Virgin, CFOX, Move), streaming (Spotify) and digital out of home (SkyTrain station ads and transit shelter ads). The radio campaign scheduled spots to match listeners' routines. "Cups" aired in the morning while "Bags" ran later in the day. Notably, no tactics that require single-use materials were included in the plan.

Complementing the paid media, a social media strategy was used to create moments of celebration and further amplify the message. Drag performer and social media influencer Synthia Kiss led a community celebration, giving kudos to people using reusable items while grocery shopping or picnicking (reference 2). Synthia Kiss also created and posted Instagram content, including a new video (reference 3).

Engagement of Metro Vancouver Members

Campaign materials were made available to all Metro Vancouver members, including social media content and co-branded assets like transit shelter ads and digital message boards. Several members used the materials on their social media channels and throughout their municipalities.

Results

Paid Media Performance

- The campaign delivered a total of 37.2 million impressions.
- Traditional tactics delivered 17.2 million impressions across out of home (digital billboards and transit shelter ads) and radio.
- Digital tactics (YouTube, Facebook, Instagram, Pinterest, Spotify) delivered 20.1 million impressions.
- Social media delivered over 7,500 likes, comments, shares and saves, and 496,690 video views, indicating that users were engaging with and amplifying the message.

Waste Composition Data

The 2023 full-scale waste composition study (reference 4) showed that single-use item disposal decreased in 2023 (358 items per capita) compared to 2022 (479 items per capita), with early indication that retail bags disposed with garbage are declining since 2021. (This is most likely due to actions at all levels of government that have implemented bans on plastic shopping bags, and fees for recycled paper and reusable alternatives.) The "What's Your Superhabit?" campaign first launched in 2021.

ALTERNATIVES

This is an information report. No alternatives are presented.

FINANCIAL IMPLICATIONS

The 2024 single-use item reduction campaign has a budget of \$200,000, supported under the Zero Waste Communications Program of the 2024 General Government budget.

CONCLUSION

2024 was the fourth year of the "What's Your Superhabit" campaign, which aims to reduce the use and disposal of single-use items among Metro Vancouver residents. The campaign focused on adults aged 18–44 who are more likely to have received a single-use item. The creative was the same as in 2023, and the regional media buy was complemented by a social media strategy focused on celebrating everyday actions to reduce single-use. The campaign performed strongly with 37.2 million total impressions, nearly 500,000 video views, and over 7,500 likes, comments, and shares on social media. The 2023 full-scale waste composition study showed that single-use item disposal decreased compared to 2022. The campaign will run again in 2025, informed by learnings from 2024.

ATTACHMENTS

1. Presentation re: 2024 Single-Use Item Reduction "What's Your Superhabit?" Campaign Results

References:

1. ["What's Your Superhabit?" Website](#)
2. ["Synthia Kiss Community Celebration" Instagram Reel](#)
3. ["Synthia Kiss Newscaster" Instagram Reel](#)
4. [Report titled "2023 Waste Composition Data" dated July 4, 2024](#)

65349185



“What’s Your Superhabit?” 2024 Campaign Results

Alison Schatz
Senior Communications Specialist

Zero Waste Committee, October 3, 2024
70224049

metrovancover

BACKGROUND

Regional Single-Use Item Reduction Campaign

Objective	Reduce the use and disposal of single-use items in Metro Vancouver through voluntary reduction.
Audience	<ul style="list-style-type: none">• Metro Vancouver residents• Focus on younger residents (18–44), who are more likely to have received a single-use item in the past day
Strategy	<ul style="list-style-type: none">• Celebrate everyday actions to reduce single-use items• Increase motivation to use reusables by creating sense of accomplishment / reward

CREATIVE DIRECTION

“What’s Your Superhabit?”



metrovancover

2024 UPDATE

Research Finding	Strategy
<p>According to the 2022 post-campaign survey, the most common reason that residents give for using single-use items is still that they forget to bring their reusable items with them.</p>	<p>Call to action: Get tips to remember your reusables at Superhabits.ca.</p>
<p>Single-use cups and containers increased post-COVID as people returned to work and school (among the most common SUIs in 2022 waste composition study)</p>	<p>Heaviest emphasis on cups and containers</p>

metrovancover

4



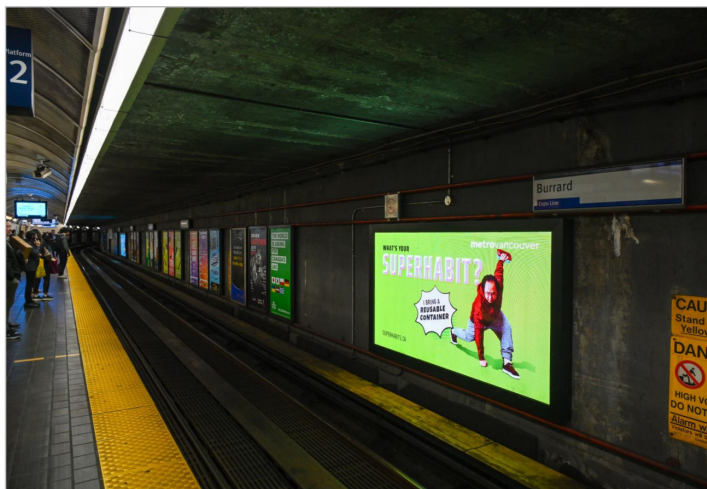
metrovancover

5

REGIONAL MEDIA BUY

#CelebrateSuperhabits
 What's Your Superhabit? - Single-Use Item Reduction
 532K views 9 likes 0 comments SHARE SAVE ...
 MetroVancouver 3.72K subscribers
 Our small daily routines to reduce single-use items will save the day. Get tips and more at Superhabits.ca.

YouTube Video Ad



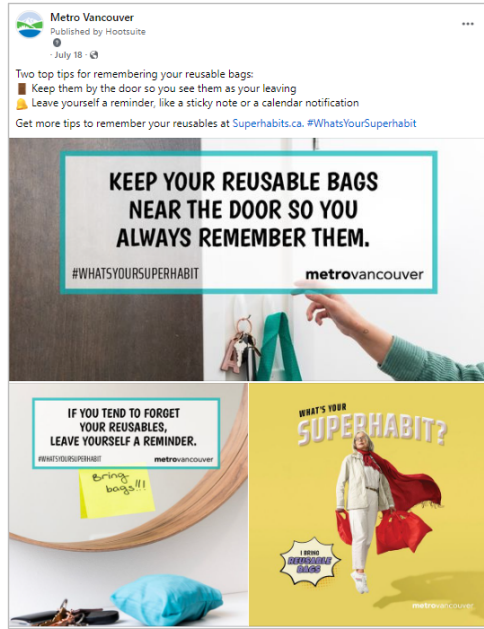
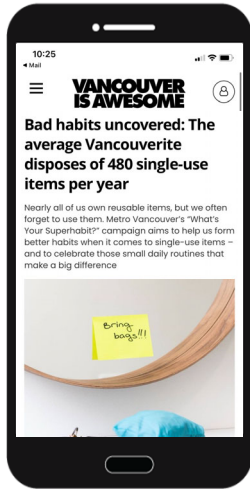
SkyTrain Station Ad

metrovancover

6

REGIONAL MEDIA BUY

Reminders



metrovancover

SOCIAL MEDIA



metrovancover

RESULTS

37.2 million

total impressions

500k

video views

7,500+

social media likes, comments, and shares

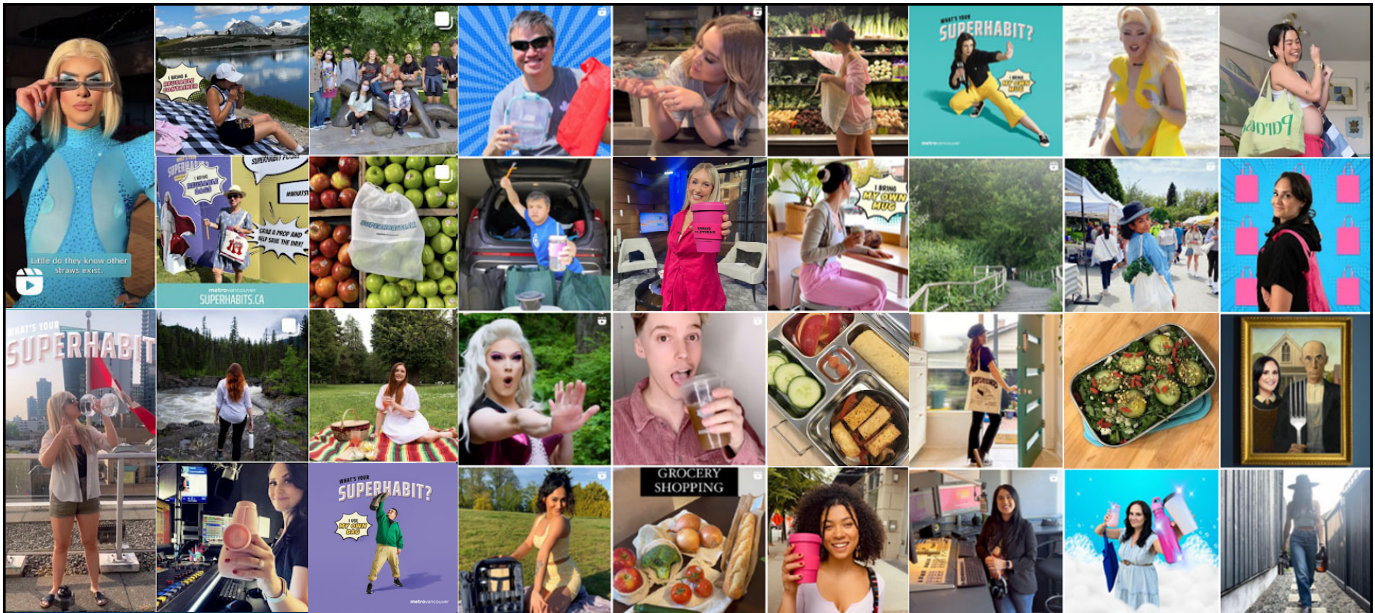
3

awards



metrovancover

9



#WhatsYourSuperhabit
Superhabits.ca

metrovancover

To: Zero Waste Committee

From: Paul Henderson, General Manager, Solid Waste Services

Date: September 25, 2024 Meeting Date: October 3, 2024

Subject: **Manager's Report**

RECOMMENDATION

That the Zero Waste Committee receive for information the report dated September 25, 2024, titled, "Manager's Report".

Weigh Scale Software System Replacement

The replacement of the weigh scale software system used at all Metro Vancouver solid waste facilities is nearing completion. The rollout began at the Central Surrey Recycling and Waste Centre in June, and the new software is also operational at the Langley and Maple Ridge recycling and waste centres. The remaining facilities are on track to be upgraded by the end of this year.

The new system has many beneficial features including licence plate recognition, emailing of weigh scale receipts and invoices from the system, direct connection to the Moneris system (credit/debit card payments), and a modern interface to reduce operator input time. The new system will reduce the potential for operator entry errors and provide more automation of certain tasks. There are also new automated reporting capabilities that will allow scheduled data reports to be sent to account customers.

2024 Create Memories Not Garbage Campaign

This year, the Create Memories, Not Garbage regional campaign will continue to encourage residents to celebrate the holidays with less waste. The campaign will be in its 14th year. A regional media buy will include targeted digital and broad traditional placements. The media promotion will focus on placements and environments where the target audience spends time — particularly when in planning and gift-buying mode. Digital tactics will encourage audiences to find gift inspiration via the Merry Memory Maker app, which will feature over 200 low-waste gift ideas. New in 2024, social media influencers will help build social norms by creating and sharing content about how they and people in their community celebrate the holidays with less waste. The Create Memories, Not Garbage creative will be further promoted through Metro Vancouver's social media channels, website, and support from member jurisdictions. Media relations will also be engaged to further amplify the seasonal message.

Opportunity for the Public to Present to the Zero Waste Committee and the Solid Waste Management Plan Public/Technical Advisory Committee – November 7, 2024

As part of the idea generation phase of the solid waste management plan update, a Solid Waste Management Plan Public/Technical Advisory Committee meeting with the Zero Waste Committee invited is scheduled for November 7, 2024 at 2:00 pm (immediately following the November Zero Waste Committee meeting). The purpose of the meeting is to provide an opportunity for members of the public to present ideas directly to the Solid Waste Management Plan Public/Technical

Advisory Committee and Zero Waste Committee on any topics related to the solid waste management plan update. Zero Waste Committee members will receive a calendar invitation with more information. The meeting will be hybrid, with any in-person participants attending in the Metro Vancouver Board Room, and online participants on Zoom. The meeting will be live-streamed, recorded, and posted on the Metro Vancouver website to maximize transparency.

Presentations related to all aspects of solid waste management in the region are welcome, with a particular focus on idea generation. The idea generation phase of engagement aims to develop a set of potential actions and strategies for inclusion in an updated plan, as well as goals.

Waste-to-Energy District Energy System – Infrastructure Access Agreement Update

On September 24, 2024, the City of Vancouver Council approved negotiating and executing an infrastructure access agreement with the GVS&DD to install and operate district energy piping under certain streets in the City of Vancouver. These pipes will deliver thermal energy from the Waste-to-Energy Facility to River District Energy, the energy utility servicing the River District community in Vancouver. The approval is for approximately 500 metres of pipe network within the City of Vancouver, out of the approximately five-kilometre pipe network from the Waste-to-Energy Facility to River District. The remainder of the pipe network is within the City of Burnaby and will support future connections to Metrotown and Edmonds.

Procurement Updates

District Energy Update

Metro Vancouver issued a request for qualifications (RFQ 24-195 – Piping Supply and Installation - Waste-to-Energy Facility District Energy System Project Phase 1) which closed on August 8, 2024. Nine submissions were received. The submissions are being evaluated with the goal of pre-qualifying companies to submit full construction proposals.

Recycling and Waste Centre Operations and Maintenance

Metro Vancouver issued a request for qualifications (RFQ 24-075 – Operation and Maintenance of Recycling and Waste Centres) which closed on July 23, 2024. Seven submissions were received. The submissions are being evaluated with the goal of pre-qualifying companies to submit full operation and maintenance proposals.

Waste-to-Energy Facility Operations and Maintenance

Metro Vancouver issued a request for proposals (RFP 24-193 – Operation and Maintenance of the Metro Vancouver Waste-to-Energy Facility) which closed on August 6, 2024. The current operations and maintenance contract expires in March, 2025. Two submissions were received. The submissions are being evaluated with the goal of selecting the lead proponent to proceed with negotiations and develop a draft contract for consideration of the Zero Waste Committee and Board. A transition contract will be entered into with the lead proponent to facilitate the hand-over from the current contractor to the new contractor.

Chop Value Update

Metro Vancouver worked with ChopValue to have a lectern made of used single-use chopsticks collected from restaurants across the region. ChopValue started its first microfactory in Vancouver, and has now expanded across the globe. As of December 2023, ChopValue has collected 137,408,840 chopsticks and repurposed them into carbon-positive home and business furnishings resulting in an estimated 412 tonnes of chopsticks diverted from disposal and the reduction of the equivalent of 6,692 tonnes of carbon emissions.

At the September 5, 2024, Zero Waste Committee meeting, a Committee member asked whether residential collection of chopsticks is available. ChopValue's focus is mostly on dine-in chopsticks. For the takeout chopsticks, the company has drop-off locations across the region, including major shopping malls and food courts. Provincial legislation in place since January 2024 requires that restaurants only provide single-use chopsticks and other similar items such as condiments by request.

New Recycling Council of British Columbia Executive Director

Metro Vancouver works closely with the Recycling Council of British Columbia (RCBC) to provide accurate where-to-recycle information and to answer calls related to items collected at recycling and waste centres. On September 5, 2024, RCBC announced the hiring of their new Executive Director, Christoph Schultz. Schultz comes to RCBC from a career in other non-profit organizations, working on sustainability and social equity. Most recently he worked with Fig Tree Foundation, a public foundation supporting international development organizations that are advancing sustainable development through capacity building, impact investing, and grant funding. At Fig Tree, Christoph led programming for a network of over 30 non-profit organizations as well as stewarding relationships with grant funding recipients.

Right to Repair and Greenwashing Advocacy

The chairs of the Metro Vancouver Zero Waste Committee and the National Zero Waste Council provided joint responses to two federal consultations related to right to repair and greenwashing.

Industry Science and Economic Development Canada initiated a right to repair consultation which closed on September 26, 2024. The Metro Vancouver and National Zero Waste Council response encourages ISED Canada to work with provinces to create a harmonized approach for right to repair legislation across Canada, and work with industry to improve the repairability, durability, and interoperability of household appliances and consumer electronics.

The Competition Bureau requested feedback on the Competition Act's new greenwashing provisions by September 27, 2024. The Metro Vancouver and National Zero Waste Council response encourages the Competition Bureau to prioritize addressing false claims that products and packaging are recyclable, compostable, or flushable when they are not accepted in the regional solid waste and liquid waste management systems. False recycling and composting claims lead to contamination in our recycling and composting systems. When flushed, products like personal wipes can clog pipes leaving building owners, municipalities, and Metro Vancouver with large

maintenance bills for unclogging pipes. If left unmaintained these products can lead to sewer backups which can damage homes, buildings, and infrastructure and require costly restoration.

Circular Food Hubs: Mainland Nova Scotia

In 2023, the National Zero Waste Council launched a place-based circular food hubs pilot project, in collaboration with Halifax Regional Municipality, Halifax Food Policy Alliance, the City of Guelph, Divert Nova Scotia, Environment and Climate Change Canada, along with representation from the cities of Richmond and Vancouver, and circular food businesses. The project will wrap up this fall.

Previous research identified the importance of establishing concentrated geographic clusters of circular food solution activities (known as food hubs) as a means to address food waste and climate-changing greenhouse gas emissions throughout supply chains. These hubs maximize the use of all food produced, ensuring upcycling, recovery, alternate food product manufacturing, and other strategies are best enabled, to keep food cycling at its highest value. An example is a food processor using the spent grain of a local brewer (which is normally disposed of as waste) and transforming it into flour or baked goods. There is a significant role to be played by businesses implementing solutions, local governments enabling a supportive policy and innovation context, and community organizations contributing to innovative solutions.

The co-funded pilot in Nova Scotia was designed to test a five-step process that would support circular food hub development. Lessons learned will support the strategic development of circular food hubs in Metro Vancouver and other regions, and enable significant traction on preventing food waste going to disposal. Having a series of place-based circular food hubs across the country would create anchors of activity in the Canadian landscape and contribute to a transformation of the Canadian food system from linear to circular.

2024 Zero Waste Committee Work Plan

The attachment to this report sets out the Committee’s work plan for 2024. The status of work program elements is indicated as pending, in progress or complete. The listing is updated as needed to include new issues that arise, items requested by the Committee and changes in the schedule.

ATTACHMENTS

- 1. Zero Waste Committee 2024 Work Plan

70461026

Zero Waste Committee 2024 Work Plan

September 25, 2024

Priorities

1st Quarter	Status
2023 Holiday Waste Reduction Campaign Results	Complete
2023 Zero Waste Conference Report	Complete
Solid Waste Management Plan: Vision and Guiding Principles	Complete
National Zero Waste Council 2023 Accomplishments and 2024 Projects	Complete
2022 Solid Waste and Recycling Biennial Report	Complete
2nd Quarter	Status
Tipping Fee Bylaw Updates	Complete
2023 Disposal Ban Program Results	Complete
GVS&DD Notice of Bylaw Violation Enforcement and Dispute Adjudication Bylaw	Complete
2023 Waste-to-Energy Facility Financial Summary	Complete
2023 Waste Composition Data	Complete
2023 – 2024 Metro Vancouver Engagement with the Love Food Hate Waste Canada Campaign	Complete
2024 Food Scraps Recycling Campaign Results	Complete
Waste-to-Energy Facility District Energy System Update	Complete
2024 Think Thrice Textiles Waste Reduction Campaign Results	Complete
Solid Waste Services 2023 Year-End Financial Performance Results Review	Complete
Solid Waste Services 2024 Financial Performance Reporting and Annual Forecast #1	Complete
Waste-to-Energy Facility Biosolids Management System Contract	Pending
3rd Quarter	Status
2023 Waste-to-Energy Facility Environmental Performance Summary	Complete
2024 National Zero Waste Council Projects	Pending
Recycling and Waste Centre Reuse Scale-Up	Pending
Solid Waste Services 2024 Financial Performance Reporting and Annual Forecast #2	Pending
Repair Events, Reuse Programs, and Regional Food Recovery Network	Pending
Solid Waste Management Plan: Idea Generation	Complete
Multi-Family Residential Waste Prevention	Pending
4th Quarter	Status
2024 Single-Use Item Reduction Campaign Results	In Progress
Solid Waste Services Annual Budget and 5-Year Financial Plan	In Progress
Solid Waste Services 2024 Financial Performance Reporting and Annual Forecast #3	Pending
2025 Tipping Fee Bylaw Revisions	In Progress
North Surrey and Langley Recycling Depot Development	Complete