

Jericho Reservoir

# GVWD Capital Program Expenditure Update

AS OF JUNE 30, 2023

Hein Steunenberg

Division Manager Engineering & Construction Treatment & Facilities

Water Committee - September 13, 2023

61467764

**metro**vancouver

# **CAPITAL EXPENDITURE SUMMARY REPORT**

Status of 2023 GVWD Capital Program

- 145 total projects included in program
- 94 active projects
- 3 completed projects
- 1 cancelled
- 47 projects not yet started

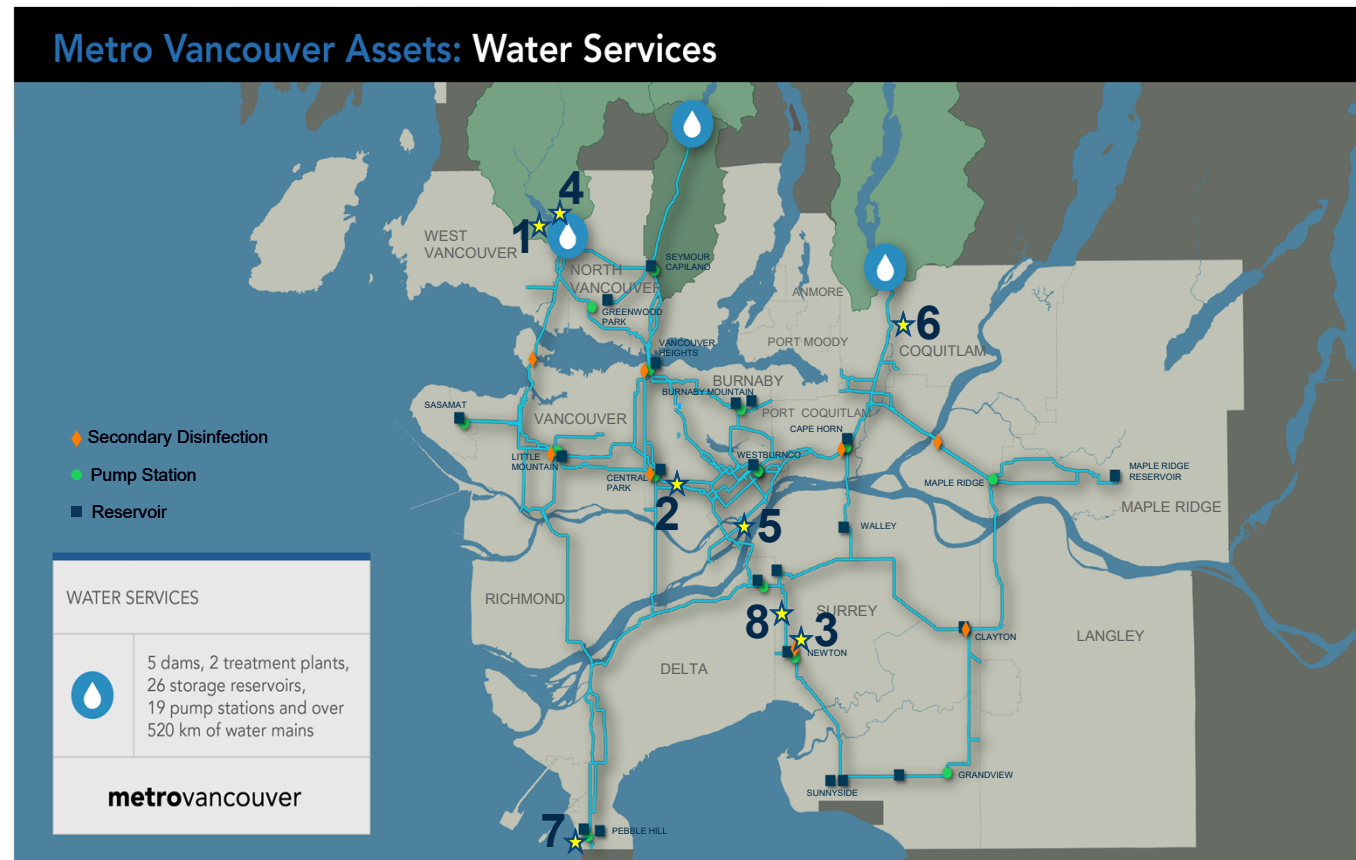
# **CAPITAL EXPENDITURE SUMMARY REPORT**

Status of Overall GVWD Capital Program

- 2023 Prorated Capital Cash Flow is \$200 m
- Actual expenditures to end of June were \$93.5 m
- At this time, the planned work is expected to be completed within budget

# HIGHLIGHTED PROJECTS

1. Cleveland Dam – Lower Outlet HBV Rehabilitation
2. Central Park Main No. 2
3. Newton Pump Station No. 2
4. Capilano Raw Water Pump Station – Back up Power
5. Annacis Water Supply Tunnel
6. Coquitlam Main No. 4
7. Pebble Hill Reservoir Seismic Upgrade
8. Kennedy Newton Main



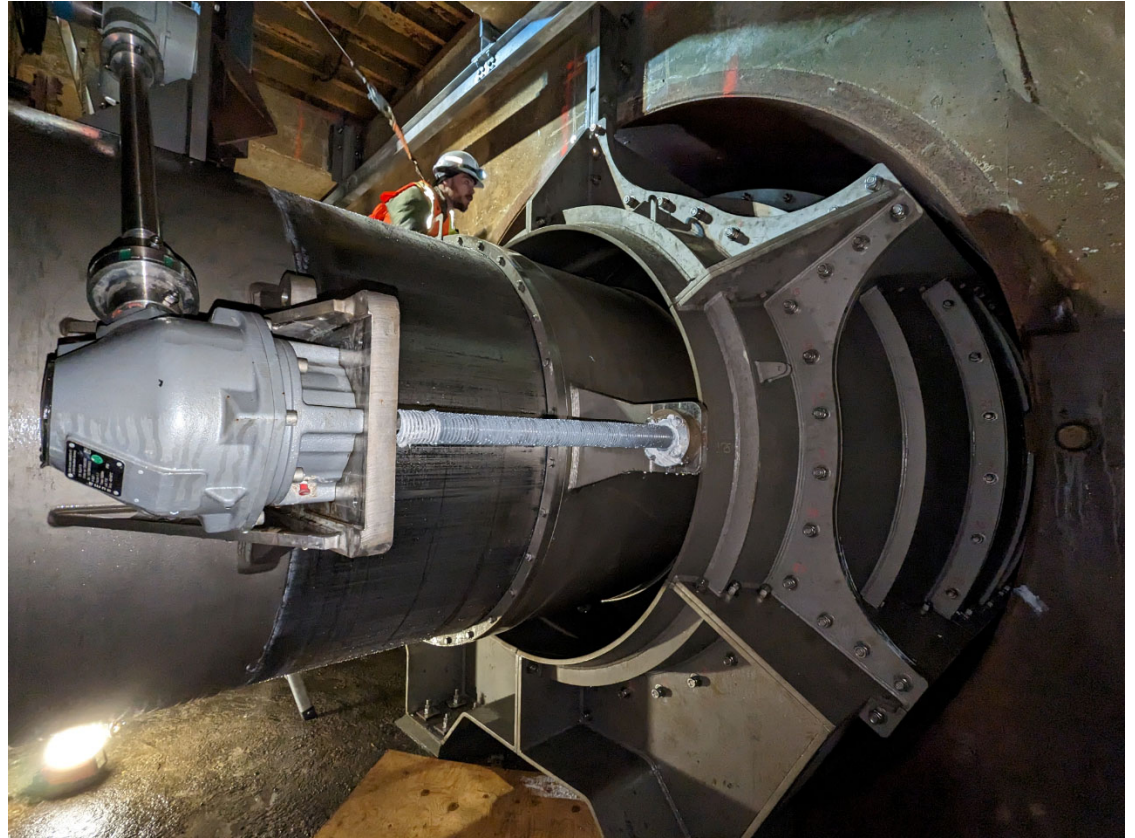


# CLEVELAND DAM – LOWER OUTLET HBV REHABILITATION

West Lower Outlet Fixed Cone Valve Hood



West Lower Outlet Fixed Cone Valve Hood



# CENTRAL PARK MAIN NO. 2 – PHASE 1

Elwell Crossover Chamber



Oxifree Application at 14th Avenue Crossover Chamber





# NEWTON PUMP STATION

Completed tunnel for new pump station feed



Entry shaft for tunnel boring machine

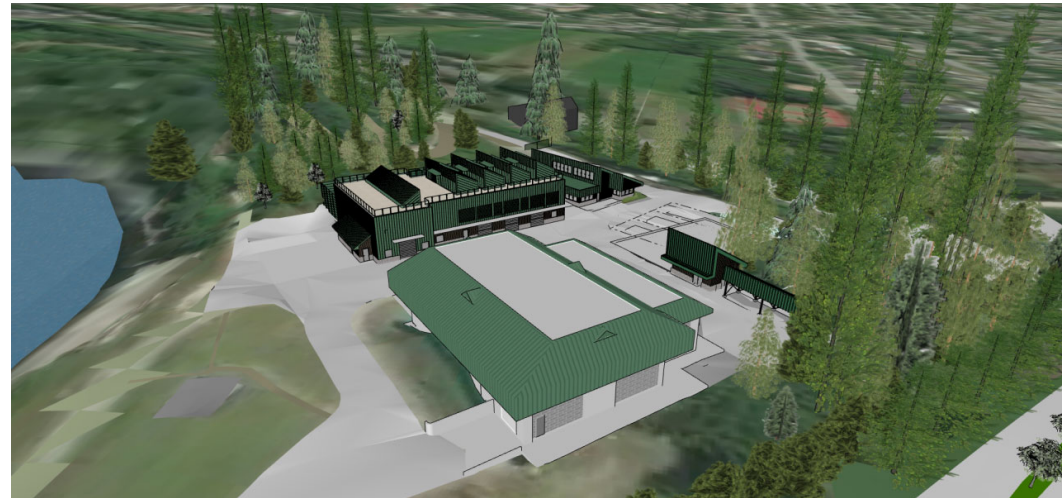


# CAPILANO PUMP STATION BACKUP POWER

Factory Testing of one Genset



Powerhouse Facility Rendering





# ANNACIS WATER SUPPLY TUNNEL

Hydromill working on a slurry wall panel at the North shaft



Archaeological investigation at the south shaft



# COQUITLAM WATER MAIN NO. 4

3.2 m Diameter steel pipe in production



Steel pipe staged for delivery



# PEBBLE HILL RESERVOIR

Interior Reservoir Work



Application of the fiber reinforced polymer strengthening system on the rooftop





# KENNEDY NEWTON WATER MAIN

Crossover chamber just off 86th Avenue



Pipe installation along 86th Avenue







Seymour Capilano Filtration Plant



Questions?

**metro**vancouver